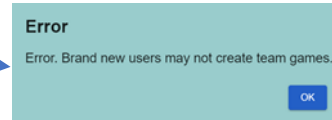


How to Create a Team Match

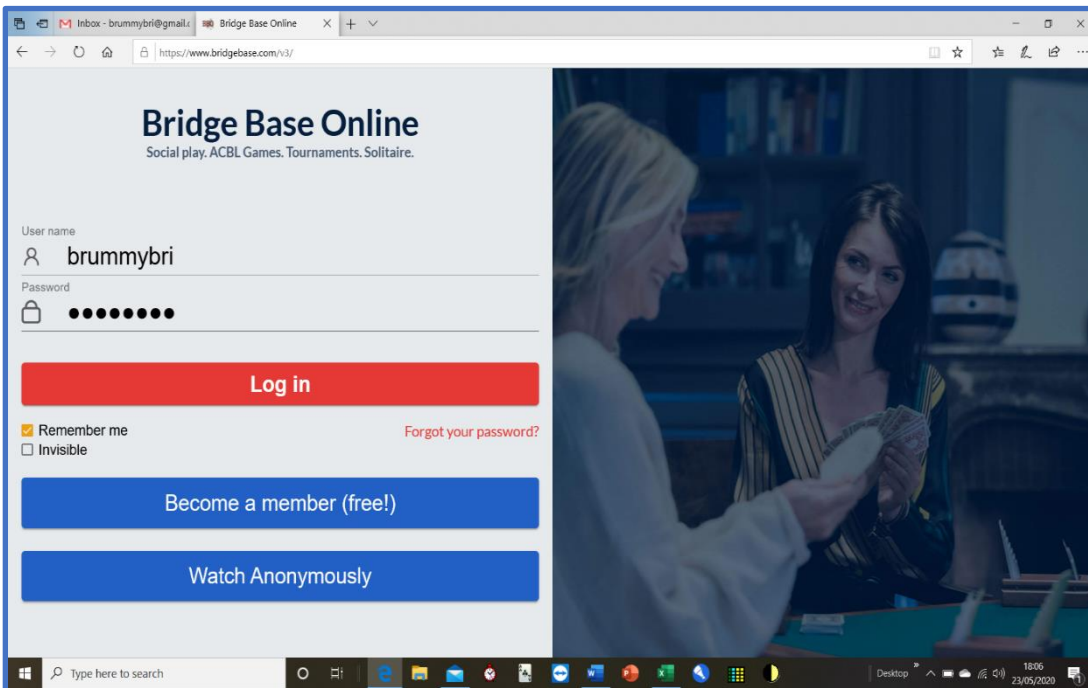
NB: BBO requirements to be able to create a team match:

1. 100+ Logins
2. Been a member more than 2 weeks.-



Navigate to the BBO

login page,
and Logon

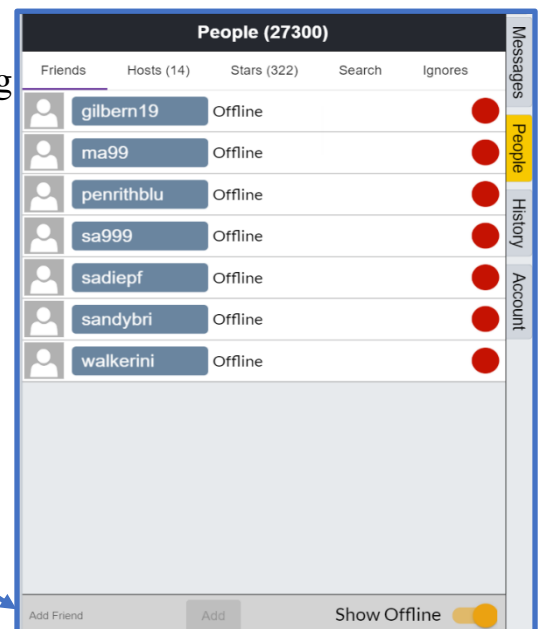


Navigate to the 'People' Tab, and ADD ALL other 7 players to your Friends List:

You will need to know they are 'ONLINE' before Creating
you will have to CREATE it again.

All 8 players required.

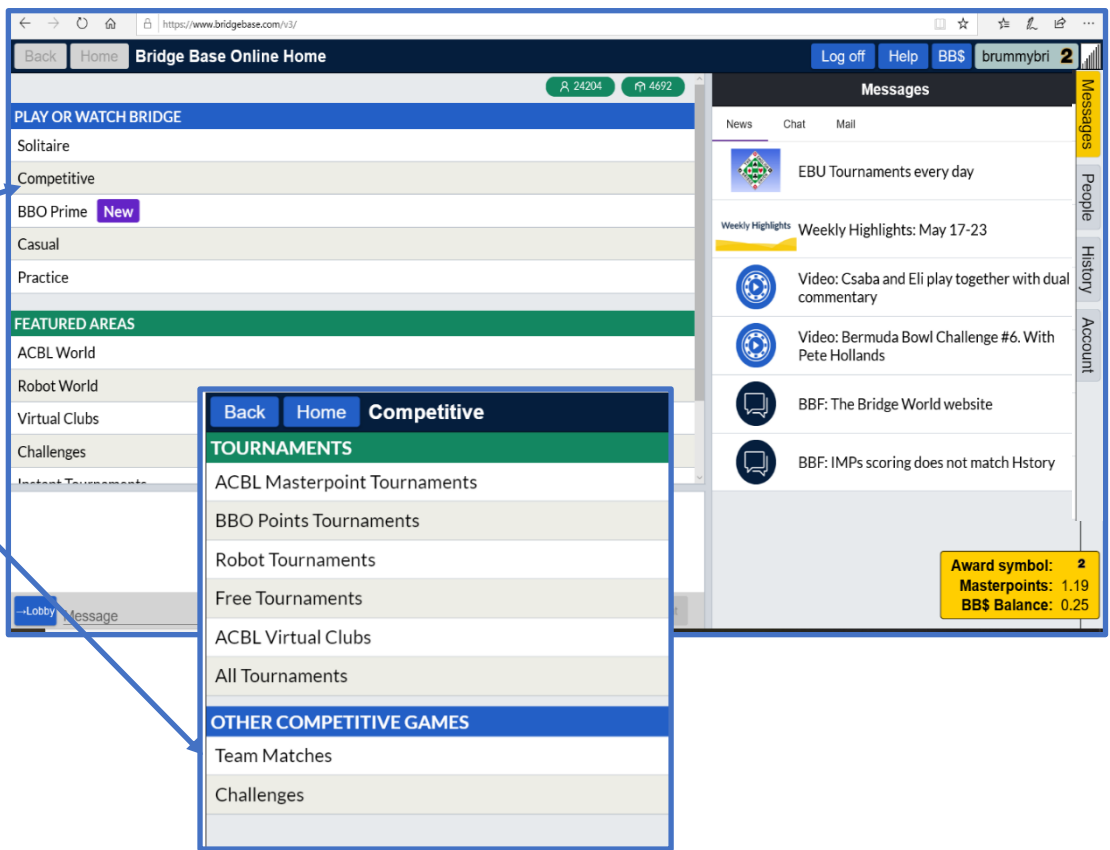
Add Friends Here:
Type in username
and click Add



and

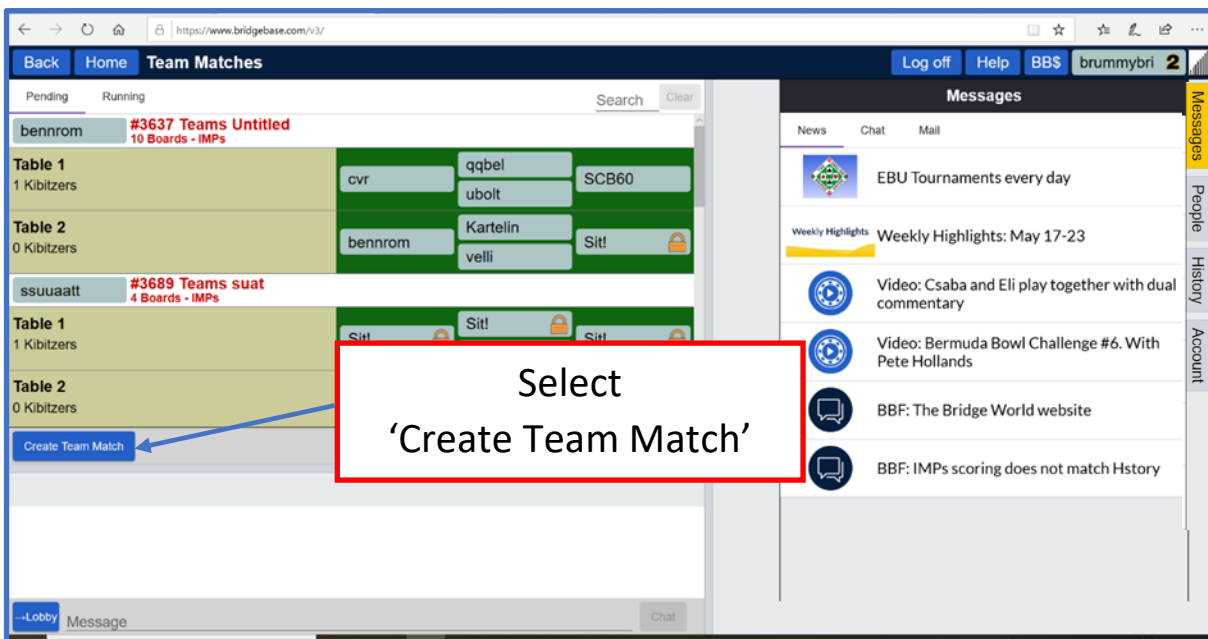
The Match will take place over TWO sessions of 8 Boards Each, one played immediately after the other.

Play 8 Boards, swap one Pair over within Team 2, (move players from NS to EW) and play a further 8 Boards.

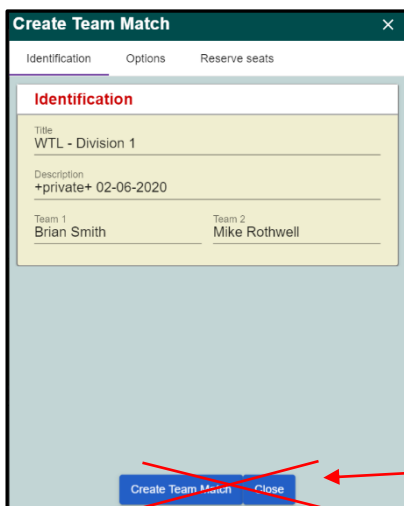


Click Competitive,
then,
Team Matches

Pending Team Matches are displayed



Select
'Create Team Match'



1 - IDENTIFICATION TAB

Key a Title *WTL Division 1*

Key a Description - *+private+ & Today's Date*

Key Team 1 - *Captain's Name*

Key Team 2 - *Captain's Name*

Select 'Options' Tab

Lower case!
+private+
stops others
trying to join
the game

Do not click create match yet – click Options Tab

2 - OPTIONS TAB

Choose:

IMPs

Use Random Deals

'8' Boards

Allow Undos

Uncheck ALL others

WARNING

Ensure the "barometer scoring" box is unchecked. If it isn't all the players will be able to see what is simultaneously going on at the other table – Not Good.

Do not click create match yet – click Reserve Seats Tab

3 - RESERVE SEATS

Type in the 8 players user names,

Seated in their Teams – DO NOT SWAP THEM OVER

Select
'Create Team Match'

You need to ensure ALL 8 players are logged on and NOT on the CASUAL server, before you press 'Create Team Game'. If someone is not online – you will have to create it again.

Notice also, the Directors Tab appears. It is recommended that the only option used is the 'Cancel Tournament' in an emergency.

- Teams WTL - Division 1
- Show Tables
- Edit Team Match
- Substitutes
- Reseat player
- Adjust Score
- Tournament Status
- Chat → Tournament
- Cancel Tournament

At the end of the match, the result will appear in the 'History' Tab – Recent Tournaments

#	Title	Score	Rank	Maste	Prize
6493	#6493 Teams WTL	-29.00 IMP	2		
6112	#6112 Teams WTL	-34.00 IMP	2		
5487	#5487 Teams WTL	0.00 IMPs	1		
5270	#5270 Teams WTL	1.00 IMPs	1		

NB: These results may not come through instantly.
The Second Half can now be set up, when both Teams have finished.

Set up the second half. Remember to SWAP pairs over in ONE team.

1st Half

Repeat the procedure for setting up a match.
Remember to SWAP over one Pair, in ONE Team only.

(maintain the 2 separate teams)

2nd Half

Within the 2nd Team, change NS to EW and EW to NS

The Final Score can be found in the Hand Records on the Home Page. This may not be instant, please be patient. In fact, this can take a few **hours** to come through!

Results can be found here: <http://www.bridgebase.com/myhands/>
(See script – 'Play a Team Match' for further information).

Calculate the total IMPS for the Two Matches, the Nett total is to be added to the Westmorland website by the Winning Team, together with the corresponding VP score.

VPs	IMPs
10 - 10	0 - 1
11 - 9	2 - 4
12 - 8	5 - 8
13 - 7	9 - 12
14 - 6	13 - 17
15 - 5	18 - 22
16 - 4	23 - 28
17 - 3	29 - 35
18 - 2	36 - 43
19 - 1	44 - 53
20 - 0	54+