



WBC

Bridge Cruise

Embark on a scenic boat trip from Melbourne to Adelaide, with stops at Phillip Island Kangaroo Island, and Port Lincoln. Enjoy the serene beauty of the southern coast while indulging in some competitive bridge onboard

30TH NOVEMBER – 7TH DECEMBER



Prices starting from
\$1449PP Twin Share
(Inc Taxes)



Costs include bridge on board

FOR MORE INFORMATION, PLEASE CALL TRAVELRITE 03 8803 6868



Diamond Princess Cruise – 7 nights

Melbourne to Phillip Island, to South Australia Adelaide, Kangaroo Island, Port Lincoln - return to Melbourne.

Departs Saturday 30th November 2024 from Melbourne & Returns Saturday 6th December 2024



The Diamond Princess is a treasure trove of exceptional delights waiting to be discovered. Dine on freshly prepared sashimi in Kai Sushi, watch street performers in the dazzling Atrium, or take in a lavish production show in our state-of-the-art theatre. And for a unique treat visit the Izumi Japanese Bath, the largest of its kind at sea. Refurbished: February 2019 Tonnage: 115,875 Guest Capacity: 2,670 lower berths. Number of Crew: 1,100

Cruise Itinerary ...

| 2024 | Location | | Arrive | Depart |
|-------------------------------------|-------------------------------------|---|-----------------------|---------------------|
| Saturday, 30 th November | Port of Melbourne Victoria | | Board from 12.00pm | 5.00pm |
| Sunday, 1 st December | Phillip Island, Australia | Water Shuttle Required, Wheelchair Access Limited | 7.00am | 11.00pm |
| Monday, 2 nd December | At Sea | | | |
| Tuesday, 3 rd December | Adelaide (Port of Adelaide) | | 7.00am | 6.00pm |
| Wednesday, 4 th December | Kangaroo Island, South Australia | Water Shuttle Required, Wheelchair Access Limited | 7.00am | 5.00pm |
| Thursday, 5 th December | Port Lincoln South Australia | | 8.00am | 6.00pm |
| Friday, 6 th December | At Sea | | | |
| Saturday, 7 th December | Port of Melbourne Victoria | | 7.00am | Disembark 9.00am |

NOTE: Please view the list of the daily activities and excursions provided by the cruise line.

These may be subject to change at any time

Joyful Rejuvenation

Everything you need to refresh body and mind is right on board. Indulge in a manicure, pedicure or a makeover in the salon, or a soothing massage in the Lotus Spa®. Or maybe it's a brisk workout in the fitness centre, followed by a little "me time" in The Sanctuary, a tranquil retreat reserved just for adults.

- SLEEP by Princess
- The Sanctuary (retreat for adults)
- Lotus Spa®
- Lotus Spa® Fitness Centre
- IZUMI Japanese Bath
- Conservatory
- Fitness Classes



Activities

Each day, a world of exciting activities awaits, from cooking demonstrations to dance classes, trivia contests and a range of enrichment programs, including our Encounters with Discovery at SEA speaker series from experts who offer insights into the places you'll visit.

- Discovery at SEA Programs
- Shops of Princess
- Art Gallery & Auctions
- Photo & Video Gallery
- Freshwater Pools & Hot Tubs
- Sports Court (basketball, volleyball, tennis)
- Princess Links (putting course)

Entertainment

There's always something happening on board — from heading to the Princess Theatre for a lavish original musical production to enjoying a blockbuster movie poolside under the stars or simply relaxing in a lounge sipping a cocktail where a live band is playing your song.

- | | |
|---|--|
| <ul style="list-style-type: none">• Movies Under the Stars®• Original Musical Productions• Music & Dancing• Vegas-style Casino• Featured Guest Entertainers | <ul style="list-style-type: none">• Princess Theatre• Churchill's (cigar lounge)• Club Fusion (dance club)• Skywalkers Nightclub• Crooners Bar |
|---|--|

The **Waverley Bridge Club (WBC)** in association with its Travel and booking agent – **Travelrite International** of 423 Whitehorse Road Balwyn Victoria has organised a “Bridge Cruise” on the Diamond Princess from the 30th of November to the 7th of December 2024.

Some of the benefits and highlights of this bridge cruise are:

- The cruise ship disembarks from Melbourne and returns eight days later to Melbourne. You are not faced with extra costs and time wastage of having to board the ship in another port, for example Sydney.
- As from next year very few ships will be sailing from Melbourne because of the increased mourning taxes imposed by the Victorian State Government.
- There are no cruise ships that are sailing from Melbourne and return, that offer Duplicate Bridge on Board. WBC has negotiated with the Pacific Princess to provide us with a designated room and tables for our exclusive use, for bridge.
- We have engaged our own ‘Bridge Directors’. There will be 4 competition bridge sessions on board (Dec. 1, 2, 4 & 5) in the afternoon. We are trying to organise a bridge friendly with the South Australian Bridge Association, in Adelaide on Tuesday 3rd of December.
- We will have several Bridge lectures on mornings while at sea. Social bridge will also be available for groups of four plus. We will provide bridge partners for those whose who are single.
- We will have a designated dining area for our group.
- The Diamond Princess provides excursions on the days we are at Phillip Island, Adelaide, Kangaroo Island and Port Lincoln.
- The WBC has put together a bus trip on December 3rd when the ship is in Adelaide, it will go to the wineries in McClaren Vale. Stopping at d’Arenberg Winery, which features Salvador Dali and the famous Cube for a tour and wine tasting, then to lunch at the Victory Hotel, Sellicks Hill, set on the sandhills overlooking the Southern Ocean. *This will be limited in numbers (35) need to book early.*
- *WBC has organised a ‘Bridge Friendly’ with the Adelaide Bridge Association (Game- 10.00am to 1.00pm) on the 3rd of December – Limited entries 15 pairs.*
- While at Kangaroo Island, a trip to American River is being planned for lunch and sightseeing. *This will be subject to the availability of transport (charter buses). However, the cruise line is planning organised tours.*
- The cruise line has trips being planned for Port Lincoln, including a to visit the fish Co-op and lunch (*in the planning*).
- WBC in conjunction with Travelrite organised a very successful Bridge Cruise in December 2023, on the Queen Elizabeth cruise ship. At short notice we had 75 people booked in our tour group.

Planned Bridge Sessions:

Bridge Directors: Jenny & Kim Hoff

Day 2: Sunday 1st December - Afternoon bridge session 12.30 to 3.30pm on the Diamond Princess (Phillip Island stop off)

Day 3: Monday 2nd December - Afternoon bridge session 12.30 to 3.30pm on the Diamond Princess (at Sea)

Day 4: Tuesday 3rd December - Bridge Friendly at the Adelaide Bridge Club. Commences 10.00 ends 1.00pm. (Adelaide) ... **Details list below.**

Day 5: Wednesday 4th December - Afternoon session 12.30 to 3.30pm on the Diamond Princess (Port Lincoln)

Day 6: Friday 6th December - Afternoon session 12.30 to 3.30pm on the Diamond Princess (at Sea)

Proposed: Morning sessions of casual bridge, unsupervised and a lecture and or video (in planning).

Tuesday 3rd December: Friendly Bridge Competition – Bridge Association of South Australia

Limited Numbers: 15 pairs (30 people).

Session Time: 10.00am to 1.00pm

Cost: \$15.00 PP

Transport: Bus Charter or Book 3 Maxi Taxis from port to bridge club.

Ship departs at 6.00pm ... so you could spend 3 hours in Adelaide city sightseeing before returning to the ship. We will provide drop off in city central on return.

SA Bridge Association

Address: 243 Young St, Unley SA 5061

Phone: [\(08\) 8373 3995](tel:0883733995)

Email: generalmanager@sabridgeclub.com.au



Priya Kamineni
General Manager



Caprice Davey
President

Bus Tour from Adelaide Tuesday 3rd December to wine area, Fleurieu Peninsula, for lunch (limited numbers – 35 people)

- **d’Arenberg Winery - the Cube (Salvador Dali), simply amazing & Tastings.**
- **Victory Hotel, Sellick’s Hill - Lunch**

Bus Departs 9.30am (assemble on wharf at 9.15am), Port Adelaide passenger terminal to d’Arenberg winery (approx. 1 hour) – arrive 10.30am, leave 12.15pm.

D’Arenberg to Victory Hotel (21 km – 20 mins) – arrive 12.35pm Lunch, depart 3.00pm.

Victory Hotel to Port of Adelaide (approx. 60 kms – 1hr 10 mins) arrive at cruise ship 4.15pm

D’Arenberg Winery, McLaren Vale

“The CUBE” – Salvador Dali

51km from Port of Adelaide WBC group tasting (30) at the d’Arenberg Cube.

The tour of the Cube and the Salvador Dali exhibition includes a ‘Hosted Tasting’ of many of d’Arenberg classic wines. This experience commences at approx. 10:30am. ...



- Explore the Alternate Realities Museum with a hosted group tour where you will be guided through a space filled with wall-to-wall art installations, designed to excite and awaken your senses.
- Enjoy a tasting in the d’Arenberg Cube with a hand-picked selection of d’Arenberg wines as you explore our quirky labels, and learn about McLaren Vale geology, viticultural practices and winemaking philosophies.
- Arrive 10.30am - Depart for the Victory Hotel, Sellick’s Hill at 12.15pm





VICTORY HOTEL at SELLICKS HILL

652 Old Sellicks Hill Rd, Sellicks Hill SA 5174

tel: (08) 8556 3083

www.victoryhotel.com.au

OWNER: Doug Govan (wife: Nikki Govan – owner Star of Greece)

doug@victoryhotel.com.au

Manager: claire@victoryhotel.com.au

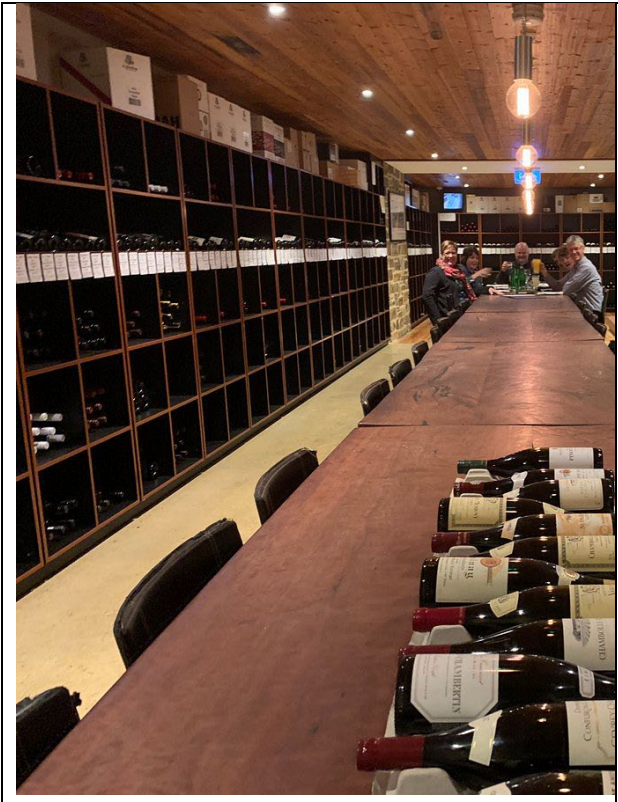
You've not truly experienced the Fleurieu Peninsula until you've visited the multi award-winning Victory Hotel, a restored 1850s-era pub perched atop the gentle slopes of Sellicks Hill, overlooking the ocean.

Earning its reputation as a firm local favourite and one of the best gastro-pubs in Australia, it's definitely the place to go if you want to take in spectacular views of Sellicks Beach, Aldinga Bay and the surrounding coastline, glass of wine in hand. Relax in the front bar and enjoy a cold beer, book an early sitting on the patio, or enjoy pre-dinner drinks on the lawn whilst watching the sun sink slowly over Gulf St Vincent.

Not just a pretty place, the food here is just as good. Packed full of cheerful pub fare, you'll love its smart, modern menu, created with as much fresh, local produce as possible. In fact, it's the reason you'll keep coming back.

From bowls of warm, marinated McLaren Vale olives and generous antipasto platters featuring Andy Clapp is' famous bread, to such delights as Myponga Beach salt & pepper squid, braised lamb shoulder and the legendary Victory burger, sizeable portions mean you'll certainly leave satisfied. Plus, seasonal specials ensure there's always something new and exciting to try.

But what makes this place extra-special? Its famous wine list. Boasting over 8,000 local and international wines, each cellared to perfection, head downstairs, explore the wine cellar and handpick the perfect bottle to accompany your meal.





The cost of this day tour to d'Arenberg & the Victory Hotel is ... \$190 pp

This includes

- **Day Bus Charter (+ driver tip)**
- **D'Arenberg Winery: tour of Cube – Salvador Dali & Wine Tasting**
- **Lunch & selected wines**

WEDNESDAY 4th DECEMBER

Kangaroo Island boasts the kind of beauty that will stop you in your tracks. Over half the island is covered with "old-growth" bush land supporting huge populations of kangaroo, koala, goanna, wallaby and other native Australian animals. Blessed by vast, open spaces and loads of sun, the "Islanders" raise sheep, create and cellar wines, produce sheep's milk cheese, distil eucalyptus oil, and harvest the honey of the treasured Ligurian Bee. And there is a thriving art community producing internationally-renowned artwork, woollen items, and crafts. The quintessential seaside town of Penneshaw, where cruise ships dock and ferries come and go, is your gateway to it all.

9 Excursions on offer from Diamond Princess – see below

<https://www.princess.com/ports-excursions/kangaroo-island-australia-excursions>



Best of Kangaroo Island

9 hours | Kangaroo Island | KGC-105K G C - 1 0 5

Moderate Activity, Includes meal

From AUD\$289.95

4.4 out of 5 stars. 89 reviews



Kangaroo Island Sights

4 hours | Kangaroo Island | KGC-200K G C - 2 0 0

Moderate Activity

From AUD\$139.95

3.4 out of 5 stars. 214 reviews



Seal Bay Boardwalk Express

4.25 hours | Kangaroo Island | KGC-225K C - 2 2 5

Moderate Activity

From AUD\$159.95

3.9 out of 5 stars. 47 reviews



Tempting Tasting Trail

8 hours | Kangaroo Island | KGC-310K G C - 3 1 0

Moderate Activity

From AUD\$329.95

3.9 out of 5 stars. 22 reviews



Cape Willoughby, Wines & Views

3 hours | Kangaroo Island | KGC-350K G C - 3 5 0

Moderate Activity

From AUD\$179.95

2.8 out of 5 stars. 52 reviews

VISIT AMERICAN RIVER on Kangaroo Island

Possible half day tour with lunch at American River (*in Planing – Bus in Shortage*)

American River is on the western side of Kangaroo Island's Eastern Cove. Ferries from the Australian mainland arrive at Penneshaw, which is about a 45-minute drive from American River. Follow Hog Bay Road until you reach the turnoff to American River Road.

American River is supposedly named for a group of American sealers who encamped here in the summer of 1803-4 and, during their stay, they built a 30 ton vessel, which they named "Independence".

Despite its name, American River is a town on South Australia's Kangaroo Island (not, actually, a river). Set in a sheltered harbor between the ocean and Pelican Lagoon, the location attracts yachties and fishing vessels with its calm waters. For travellers, it's primarily a base for birdwatching.

Karta Pintingga—which means 'Island of the dead'— is Kangaroo Island's Aboriginal name.



Surrounded by bushland and boasting spectacular coastal views stretching to mainland Australia, American River is an aquatic playground where days are best spent feasting on seafood, swimming, boating, fishing and wildlife watching. Devour oysters, marron, abalone and King George whiting on the shores of American River at [The Oyster Farm Shop](#). With everything prepared fresh on site, walk across the road to the jetty, dangle your legs over the edge and tuck into oysters farmed 200 meters away. Once you've had your fill, head to the sandy shores of Island Beach to soak up the sun or explore the protected wetlands of Pelican Lagoon. At the end of the day, kick back at your very own luxury [Oceanview Eco Villa](#) nestled atop Nepean Bay.



Reconstruction of the boat "Independence" built in 1803 at American River.

Thursday 5th of December – Port Lincoln

<https://www.princess.com/ports-excursions/port-lincoln-australia-excursions>

9 Excursions on offer from Diamond Princess – see listed below

Port Lincoln, the "Seafood Capital of Australia" With its population of 14,500 Port Lincoln is a major commercial centre for the Eyre Peninsula and a popular destination for visitors. Not only a beautiful township overlooking Boston Bay, Port Lincoln, makes an ideal base from where to explore the coast and experience Eyre Peninsula firsthand. The shopping is extensive, offering everything from supermarkets and department stores to a myriad of specialty stores. Galleries and quality art and craft outlets with local products and souvenirs will add to your holiday experience.

Make you holiday memorable by participating in one of our exciting tours and attractions on offer in and around Port Lincoln and Eyre Peninsula. For the adventurous, go Shark Cage Diving or Swim with the Australian Sea Lions. Or just stay on land and visit our local wildlife, Fauna Park.



20 Proper Bay Road, Port Lincoln

Port Lincoln's award-winning fresh seafood marketplace ...

BEHIND THE SCENES FACTORY TOURS WITH OYSTER & SEAFOOD TASTINGS

Visitors are invited on a "Seafood Lovers" guided tour of Fresh Fish Co's multi fish species processing factory! Learn about our diverse local fishing and aquaculture industries. Discover how a fish travels from the ocean to your table. See how fish is received, weighed and stored (you may see a fisherman unloading his catch). Learn about Eyre Peninsula's Oyster industry and taste a 'just opened' Oyster. See a commercial filleting room in action and witness the famous King George Whiting being filleted at high speeds. Enjoy a tantalising tasting of in-house smoked and pickled seafood. Book at the Port Lincoln Visitor Information Centre. NB: Covered shoes must be worn Popular add-on options include: Tour with tasting and lunch. Tailor-made tours for students, clubs, associations and more.



EXCURSIONS



Easy Port Lincoln

1.5 hours | Port Lincoln | PLN-100P L N - 1 0 0

Easy Activity

From AUD \$59.95

4.3 out of 5 stars. 172 reviews



Port Lincoln Seafood Story

3 hours | Port Lincoln | PLN-110P L N - 1 1 0

Moderate Activity, Includes meal

From AUD \$199.95

4.3 out of 5 stars. 31 reviews



Journey on Eyre

3.5 hours | Port Lincoln | PLN-120P L N - 1 2 0

Moderate Activity, Includes a snack.

From AUD \$199.95

4.1 out of 5 stars. 46 reviews



A Taste of Port Lincoln

3 hours | Port Lincoln | PLN-310P L N - 3 1 0

Easy Activity

From AUD \$199.95

4.5 out of 5 stars. 108 reviews



Rugged Coastline Discovery

4.15 hours | Port Lincoln | PLN-200P L N - 2 0 0

Moderate Activity

From AUD\$229.95

4.5 out of 5 stars. 54 reviews



Wine and Wildlife

2.5 hours | Port Lincoln | PLN-305P L N - 3 0 5

Moderate Activity, Includes a snack.

From AUD\$169.95

4.6 out of 5 stars. 21 reviews



Coffin Bay Oyster Tour

4 hours | Port Lincoln | PLN-315P L N - 3 1 5

Moderate Activity

From AUD\$289.95

No Picture - new offer

Wild Yarnbala Eco Tour

4 hours | Port Lincoln | PLN-650P L N - 6 5 0

Moderate Activity

From AUD\$289.95



**WAVERLEY
BRIDGE CLUB**

Phone +61 (03) 9807 6502
Email office@waverleybridgeclub.com.au
Address 21a Electra Avenue (rear building)
ASHWOOD VIC 3147
Web www.waverleybridgeclub.com.au

Nik Naumovski
Club Operations Manager