

THE JULY 4TH MID-ATLANTIC REGIONAL IS HERE

★ **July 2-8, 2012** ★

***Celebrate the 4th of July
with a spectacular week of bridge!***

AT THE

BETHESDA NORTH MARRIOTT HOTEL & CONFERENCE CENTER

5701 Marinelli Road, North Bethesda, MD • 301-822-9200

- GOLD POINTS GALORE
- Great new schedule with team events starting every day!
- Spacious hotel in convenient location
- LOTS of restaurants and shopping nearby

For hotel reservations call 1-800-228-9290 and mention Bridge and MABC Bridge for the special rate of \$119 (plus tax) — rate is good till June 11, 2012.

THE JULY 4TH REGIONAL FEATURES:

FAMOUS Mid-Atlantic hospitality!

- Hotel or in-suite hospitality every night!
- Special hospitality for daylight players

SPECTACULAR Intermediate/ Novice Program!

- Speakers at 12:45 & 6:15 Tues - Sat
- 0-5s play FREE on Tues
- Special I/N receptions Thurs & Sat at 4:30

- ***Bridge Boot Camp*** — Warm up your bridge muscles in the popular **Advance Your Game** class on Mon, July 2 from 1:30-4:30. The class will focus on playing card combinations and the fee is \$30. Contact Shawn Stringer to reserve a space. Join us in the hospitality suite after the class for refreshments and an opportunity to discuss bridge hands.

Tournament Chair: *Shawn Stringer, 301-275-6363, bethesdabridge@gmail.com*
Fliers available at the WBL and NVBA Unit Games and at local sectionals. Schedules are also in the April/May and June/July District 6 TableTALK publication and on the web at www.mabcbridge.org.

*Then, from **AUGUST 2-5, 2012**, it's the*

WASHINGTON BRIDGE LEAGUE'S 67th Annual Potomac Valley Tournament at the Kensington Town Hall/Armory

Come on out for Friday's IMP Pairs, Saturday's Trophy Pairs and Panel Show, Sunday's 1-Day Bridge Class, and lots more!

See page 3 for the full tournament schedule...

B

♣

U

♥

L

♠

L

♦

E

♥

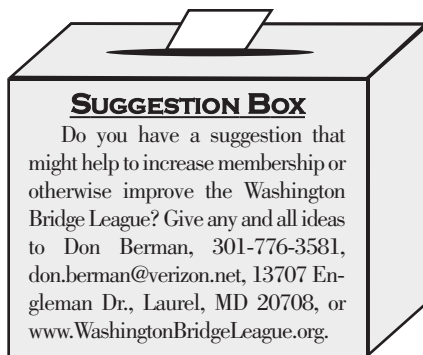
T

♣

I

♠

N



SUGGESTION BOX

Do you have a suggestion that might help to increase membership or otherwise improve the Washington Bridge League? Give any and all ideas to Don Berman, 301-776-3581, don.berman@verizon.net, 13707 Engleman Dr., Laurel, MD 20708, or www.WashingtonBridgeLeague.org.

WBL OMBUDSMAN

Any player with helpful director issues including criticism or praise of the directing staff may contact the Ombudsman, Adrienne Kuehneman and be assured that the source of the information will remain confidential. Information should be provided in writing and may be handed to her at any game, or mailed to her at 6333 Tone Dr., Bethesda, MD 20817-5811.

♣♦♥♠ ~~~~~ ♣♦♥♠

DEADLINE: APRIL 27, 2012

TO SUBMIT NEW ARTICLES TO THE EDITOR FOR THE MAY/JUNE 2012 ISSUE

Washington Bridge League BULLETIN (usps #861-240)

VOL. 70, #3— SUBSCRIPTION \$2 PER YEAR FOR MEMBERS OF UNIT #147 (INCLUDED IN ACBL ANNUAL DUES). NON-MEMBER SUBSCRIPTION RATE IS \$21 FOR THREE YEARS. PUBLISHED BI-MONTHLY BY THE WASHINGTON BRIDGE LEAGUE AT 14517 PERRYWOOD DRIVE, BURTONSVILLE, MD 20866. PERIODICALS POSTAGE PAID AT BURTONSVILLE, MD. POSTMASTER: SEND ADDRESS CHANGES TO WASHINGTON BRIDGE LEAGUE BULLETIN, ACBL, P.O. BOX 289, HORN LAKE, MS 38637-0289. ALL EDITORIAL AND GENERAL CORRESPONDENCE SHOULD BE DIRECTED TO THE EDITOR AT 901 CLIFTONBROOK LN., SILVER SPRING, MD 20905-3711.

Editor — Donna Rogall (301-421-9615), drogall@verizon.net

I/N Columnists — Shawn Stringer, shstringer@aol.com and Ron Zucker, ron@motherzucker.com

Columnists — Steve Robinson, Richard Colker, Don Berman, Chris Miller, Barry Bragin

The opinions expressed by our columnists do not necessarily reflect the opinion of the ACBL, the WBL, or even the editors of this publication. The WBL is not responsible for the claims of its advertisers.

Richard Ferrin, *President* — (202-265-0718), rferrin@mac.com

Ellen Cherniavsky, *Vice President* — (301-649-1350), eachernia@yahoo.com

Rose Berman, *Treasurer* — (301-776-3581), Rose.Berman@verizon.net

Linda Marshall, *Secretary* — (301-320-6057), ldajmarshall@msn.com

Don Berman, *Past President* — (301-776-3581), don.berman@verizon.net

UNIT DIRECTORS

Lois Geer — (301-236-0014), geerbridge@verizon.net

James Geist — (301-675-6070), wwwjfg@yahoo.com

Clyde Kruskal — (301-927-1023), cpkfam@gmail.com

Ollie Thomas — (301-951-0138), joliver.thomas@verizon.net

Hank Meyer — (301-474-6677), hankmeyer@hotmail.com

Norman Mitchell — (301-762-8383), nmitchell@verizon.net

SOME KEY VOLUNTEERS

Shawn Stringer — *Regional and NLM Tournament Chair*, (301-275-6363), shstringer@aol.com

Ron Zucker — *Sectional Tournament Chair*, (202-986-2166), ron@motherzucker.com

Adrenne Kuehneman — *WBL Ombudsman* (301-229-2022)

Frances Burke — *Membership Secretary* (301-384-6103)

Chris Miller — *Unit Game Chief Director & Club Manager* (301-318-6083), wblmanager@gmail.com

Clyde Kruskal — *Unit Game Chair* (301-395-0480)

Barbara Doran — *Unit Game & Tournament Partnerships* (301-608-0347)

Kitty Gottfried — *Unit Game and Sectional Hospitality* (301-587-3981)

Vacant — *WBL School Bridge Coordinator*

Barry Bragin — *Unit Recorder* (301-598-6853)

WBL WEBSITE:

www.WashingtonBridgeLeague.org

DISTRICT 6 SITE:

www.districtsix.org

TO GET ON AN EMAIL LIST FOR **BRIDGE NEWS & BRIDGE PROBLEMS**, SEND A NOTE TO STEVE ROBINSON AT **ROBINSWR1941@GMAIL.COM** REQUESTING SUCH.

CONTENTS

ARTICLE	PAGE
President's Letter	<i>by Don Berman</i> 2
Opt Out?	2
67th Annual Potomac Valley Tournament — August 2-5, 2012	3
WBL Non Life Master Sectional — September 22-23, 2012	4
Bits and Pieces...	
Call for Nominations for the Machlin Trophy; Welcome to the Washington Bridge League;	5
2011-2012 WBL/NVBA Player of the Year; The WBL Online ...	27
WBL Solvers' Club	<i>by Steve Robinson</i> 7
Thursday Night Unit Game...	
2012 Trophy Race Standings	<i>by Webmaster, Don Berman</i> 14
0-20 Game & Lesson Thursday Nights, Carpools	14
Schedule, WBL Cell Phone, Map, Guaranteed Partner Program ...	15
The Unit Game—2012-2013 NAPs; Spare Brains or Muscle?;	
Upcoming Sectionals	16
Committee Action 76	<i>by Rich Colker</i> 17
2011 Winners and May 17, 2012 Annual Meeting and Elections Report ..	18
66th Annual City of Washington Tournament — Results	22
NLMasterPointers ...	<i>by I/N columnists, Shawn Stringer & Ron Zucker</i> 28
Stepping Up to New Heights	29
Need a Partner or a Ride to the Unit Game?	back cover
Solvers' Club's New Problems	back cover

~ ♣♦♥♠ ~

PRESIDENT'S LETTER

by WBL President, Richard Ferrin

This is my first column as WBL President. As an initial matter, thank you for electing me. I intend to do everything I can to merit your trust. I would like to thank our past President, Don Berman and past Treasurer, Fred King, for their many years of service on the board, and their tireless work in helping bridge grow and prosper in the Washington and suburban Maryland area. The Board will sorely miss their experience and good judgment.

This year, we have several new board members, and several existing board members who are serving in new officer positions. The tournament chairs for both our sectional and regional tournaments are new as well (Ron Zucker and Shawn Stringer, respectively). They have bravely taken on the formidable task of filling the void left by our longtime sectional and regional tournament chair, Nadine Wood,

who passed away last year. As all of us get our "sea legs" in our new positions, we hope to rely not only on the sage advice of those who came before us, but also on you, the members, to let us know what we are doing right, and what we can do to improve the game we all enjoy so much. Constructive criticism is welcome and indeed vital to increasing the bridge community in the Washington and improving the experience for those who are already members.

The single most important part of making both the Unit Game and the tournaments run smoothly is the help we get from volunteers. One of my top goals is to broaden the base of volunteers so that we do not rely too heavily on the Herculean efforts of a few. We especially welcome volunteers to help Kitty Gottfried with hospitality.

Our 4th of July regional is coming up soon, and it will be held this year at the North Bethesda Marriott. Although the tournament is run by the Mid Atlantic Bridge Conference and draws players from a large area, the success of the event depends primarily on WBL membership playing lots of bridge and volunteering when possible. It is a wonderful playing site, and we look forward to seeing you there, as well as our local WBL events.

Did You Know?

The **Rockville Duplicate Bridge Club** has a game almost every day!

Join us often and spread the word!

DAY	TIME	LOCATION
Monday	11:15 AM	St James
Tuesday	7:00 PM	Rockville Senior Center
Thursday	11:15 AM	St James
Friday	11:15 AM	St James
Saturday	1:00 PM	St James

www.rockvilledbc.com

Need a Partner? Call Mark Lavine: 301-503-3348

Locations:

St James Episcopal Church 11815 Seven Locks Road Potomac, MD	Rockville Senior Center 1150 Carnation Dr Rockville, MD
--	---

OPT OUT?

If you'd like to stop receiving the printed version of the *WBL Bulletin*, please send your e-mail address to Don Berman at:

don.berman@verizon.net

You will start receiving an e-mail link to the on-line version of the bulletin in lieu of your printed copy.

AUGUST 2-5, 2012

Take a
Holiday
Potomac

Summer
in the
Valley!



at the

KENSINGTON TOWN HALL/ARMORY

3710 Mitchell St, Kensington, MD ~ (except where noted)

THURSDAY, AUGUST 2

- ♣ Stratified Open Pairs (unlim/1500/500) 11:15am
Rockville Duplicate Bridge Club, 301-503-3348 (Mark Lavine) **NO ENTRY TILL 11AM**
St. James Episcopal Church, 11815 Seven Locks Rd., Rockville
- ♦ StrataFlighted Open Pairs (A/X unlim/3000, B/C/D Separate 2000/1000/500) (both sites); Stratified NLM Pairs (NLM/100/50) & 0-20 Pairs (Kensington Armory only); Stratified 199er Pairs (Beth El only)
Beth El Congregation, 3830 Seminary Rd, Alexandria 7:00pm
Kensington Town Hall/Armory 7:30pm

FRIDAY, AUGUST 3

- ♣ *StrataFlighted A/X (unlim/3000) & B/C/D Pairs (2000/1000/500) 10:00am, 2:00pm
- ♦ **IMP Pairs** A/X (unlim/3000) **7:15pm** ← **EARLIER START!**
It's the Friday night IMPs! With only one partner, it scores like a team game. To get your IMP score on a board, we take your result and IMP it against each result at the other tables, then get the average.
- ♥ B/C/D Pairs (2000/1000/500) **7:15pm**
- ♠ Intermediate/Novice Pairs (300/200/100/50/20) (single sessions) 10:00am, 2:00pm, **7:15pm**
(will run if we have 3 or more tables)

SATURDAY, AUGUST 4

- ♣ **9th Annual: Washington Bridge League Trophy Pairs** 11:00am & 4:00pm
Two session Open Pairs, qualifying and final. Single session entries available.
- ♦ StrataFlighted B/C/D Pairs (2000/1000/500) (single sessions) 11:00am, 4:00pm
- ♥ StrataFlighted A/X Pairs (unlim/3000) 4:00pm
- ♠ Intermediate/Novice Pairs (300/200/100) or Newcomer Pairs (50/20/5) (single sessions) 11:00am, 4:00pm
~ Don't miss the between sessions **Panel Show** ~

SUNDAY, AUGUST 5

- ♣ **1-Day Bridge Class: Advance Your Game** 10:30am
- ♦ A/X Board-A-Match Teams, (unlim/5000, 2 session playthru w/short break) 11:00am & TBA
- ♥ B/C/D Swiss Teams, VPs (2500/1000/500, 7 round playthru w/short break) 11:00am & TBA
- ♠ 300/100/50 Swiss Teams, VPs (single sessions) 11:00am, 3:00pm

♣ **Lots of Intermediate & Novice Events with Silver Points!** ♥

I/N events: 0-5, 20, 50, 100, 200, 300; Stratification at Director's Discretion.

Famous Washington Hospitality includes snacks, drinks, and **Friday and Sunday lunch** free of charge. **Chair: Ron Zucker**, 202-390-3443, ron@motherzucker.com. **Volunteer Coordinator: Barbara Summers**, 301-598-5838, jimbarb1184@aol.com **Hospitality: Kitty Gottfried**, 301-587-3981, kgottfried@hotmail.com **Partnerships: Barbara Doran**, 301-608-0347, SectionalPartner@DistrictSix.org
*StrataFlighted if attendance warrants—otherwise combined into Stratified Pairs (unlim/2000/500)

Directions to the Kensington Town Hall/Armory: 495 Beltway Exit 33, Connecticut Avenue North (Rt. 185N—to Kensington). 1.5 miles, right at light—Knowles Ave. 1st right at stop—Armory Ave. 1st left at stop—to 3710 Mitchell St. & parking lot on right. Additional parking in nearby lots—see website maps.

WASHINGTONBRIDGELEAGUE.ORG

Mid-chart allowed in all events except I/N

KENSINGTON, MD: SEPTEMBER 22-23, 2012



Non Life Master Sectional

NEWPORT MILL MIDDLE SCHOOL

11311 Newport Mill Road
Kensington, MD 20895

Play for Silver

*NLMs with fewer than
500 MPs*

Maryland Hospitality

*Lunch and refreshments
included both days!*

Saturday, September 22

NLM Stratified Pairs (500/200/100 and 50/20/10)11:00 am

NLM Stratified Pairs (500/200/100 and 50/20/10)3:15 pm

Sunday, September 23 (All day playthrough with lunch break)

Stratified Swiss Teams (500/200/100)11:00 am

-Join us for a fun weekend!-

TOURNAMENT CHAIR

Shawn Stringer

301-275-6363

shstringer@aol.com

DIRECTIONS: From I-495 (Washington Beltway) take Exit 33 (Connecticut Ave/MD-185) North towards Kensington. Go 2 miles and keep Left as Connecticut Ave splits. After the split, take the third Right onto Lawrence Avenue. Take the first Left onto Newport Mill Road. The school is one-half mile on the Right.

BITS AND PIECES

CALL FOR NOMINATIONS FOR THE MACHLIN TROPHY

In 2006, the WBL initiated a new annual award, the **Machlin Trophy for Sportsmanship** in honor of Jerry Machlin, whom many of you will remember as one of the greatest directors the game has ever known.

To date, the recipients of the award are: **Dr. Charles Stenger, Peter Boyd, James Geist, Rose Berman, Barbara Doran, and Millard Nachtwey.** Each year, a committee of the most recent five winners, (the longest standing to be the Machlin Committee Chair — *Peter Boyd*) is appointed to consider this year's nominees. The criteria for awarding the trophy are as follows:

"The candidate should (1) demonstrate strong ethical standards and a commitment to active ethics (i.e., full disclosure of systems and agreements to opponents, etc.); (2) behave graciously at the table after bad results or good results; (3) exhibit exemplary behavior at all times toward partner and opponents; (4) demonstrate an ability to get along with mul-

tipl partners; and (5) demonstrate a willingness to help mentor other players in the game. A player wouldn't necessarily have to satisfy all five, but these are the main the criteria that the selection committee will consider."

We welcome nominations from the membership of the WBL. Please send your suggested candidate to Richard Ferrin at rferrin@mac.com or in person at the unit game. It would be appreciated if you would indicate in two or three sentences why you think your nominee is a good candidate for the award. We would like to hear from you by Aug. 1.

WELCOME TO THE WASHINGTON BRIDGE LEAGUE

The WBL welcomes the following new ACBL members: **Mina P Coggeshall, Caitlyn Edgley, Fadi Eidi, Ms Doris Freedman, Ms Joan M King, Marilyn Lowen, David Matusow, Mrs Beverly M Rezneck, and Phillip S Shapiro.**

In addition, we welcome the following transfers from other units: **John W Locke,**

...continued on p. 26, column 2

Dedicated to
excellence in
client service.



JOHN BARKANIC



BARBARA AMES

OUR PROFESSIONAL
TEAM OF
CERTIFIED PUBLIC
ACCOUNTANTS
IN ROCKVILLE
CAN ASSIST YOU
WITH A WIDE RANGE
OF ACCOUNTING
AND TAX SERVICES.

Tax & Business Services Available:

- Income Tax Return Preparation
- Estate & Trust Administration
- Business Profitability Enhancement
- Estate Tax Return Preparation
- Planning for Retirement Plan Setup & Distributions
- Buying & Selling Business Consulting
- IRS Audits and Negotiations
- Divorce Tax Issues/Planning
- Nonprofit Organization Accounting & Income Taxes
- Quickbooks Setup & Consulting

BARKANIC & AMES L.L.C.

CERTIFIED PUBLIC ACCOUNTANTS

CPA

15825 Shady Grove Road, Suite 130
Rockville, MD 20850
301-330-6664 • 301-330-6860 Fax • www.fbacpa.com



Great Game Products

7825 Tuckerman Lane, Suite 206, Potomac, MD 20854

1-800-GAMES-4-U or 301-299-9005

www.greatgameproducts.com • sales@bridgebaron.com

(Shipping/handling not included • All prices in US dollars)



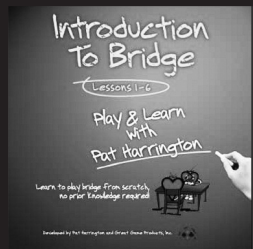
Bridge Baron 22 \$64.95

Comprehensive, easiest to use bridge game available. Download and CD available

Bridge Baron 22 is now available for iPad, iPhone and Android devices. ** features may vary

Windows 2000 / XP / Vista / 7 (English, Francais, Deutsch)

Macintosh/iMac/Mac OS X 10.5 or later (English, Francais, Deutsch)

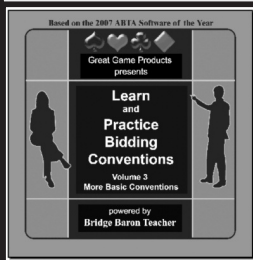


Introduction to Bridge — Play & Learn with Pat Harrington \$34.95

Available on CD-Rom for Windows 2000/XP/Vista/7 (English Only)

• Teaches both bidding and play • Paced appropriately for beginners • Lessons 1-3 teach the mechanics, trick taking, and provide the background for

bidding • Lessons 4-6 teach opening bids and their responses • Quizzes to reinforce your understanding • Provides an extensive glossary and reference section • Includes 38 carefully crafted instructional deals, and 92 BONUS practice hands • Presented in an easy-to-use, interactive format



Learn and Practice Bidding Conventions \$29.95

Available on CD-Rom for Windows 2000/XP/Vista/7 (English only)

• Learn Conventions allows you to practice each convention in Bridge Baron. LPBC teaches you six conventions in depth using the interactive Bridge Baron Teacher architecture, and allows you to practice

these conventions as well. • LPBC teaches you and allows you to practice responses and rebids for conventions, while Learn Conventions does not offer practice of responses and rebids for conventions. • **LPBC 2** and **3** are also available. They each contain seven convntions.

WBL SOLVERS' CLUB

Moderated by Steve Robinson

robinswr1941@gmail.com

Congratulations to **Marvin Elster and Ron Zucker** who tied for first with a score of 490. They win a free entry to the Unit Game, and will be invited to be on a future panel. Tied for third were **Pete Hughes, Barbara Barnes, Rick Eissenstat, Allen Veasey, Dalia Kende, James Key, JC Clement** and **Fred Gramlich** with a score of 480. Tied for eleventh were **Lyle Poe, Noble Shore, Carl Gutschick, Sam Keiter, Jeffrey Klemm, Wes Goldberg** and **Mike Gill** with a score of 470. Tied for eighteenth were **Paul McGowan, Vin Bartone, Sven Pride, Mark Cohen, Winnie Frutkin, Ronald Witt, Johnny Petersson, Tom Musso, Gene Fisher, Enid Asherman, Suzanne Abrams** and **Gerald Lerner** with a score of 460. Tied for thirtieth were **Jeff Watson, Francesco Parisi-Presicce, Dick Robinson, Nigel Guthrie, Bob Pustilnik, Al Duncker, Manuel Paulo, Nikola Tcholakov, Paul Benedict, Bob Levey, Ram Sarangan, Pete Ekstrand, Jay Weinstein, Martin Personick, Kathy Loh, Dan Baker, John Merold, Michael Meyer, Jim Allen, Arnie Frankel and Walter Taschek** with a score of 450. The average score of the 200 solvers was 416. The average score of the experts was 463.

All readers are encouraged to send answers and/or new problems to Steve Robinson, 2891 S. Abingdon St. #A2 Arlington, VA, 22206-1329. In addition to the winner receiving a free play at the WBL Unit Game, Steve will play with anyone who gets a perfect score or who exactly matches all five of his answers. If you send a self-addressed stamped envelope to the above address along with your answers, I will send you a copy of the new problems to ensure that you can meet his next deadline. You can pick up a copy of the problems at the WBL Unit Game in Maryland, and can send answers or requests for problems to robinswr@erols.com. You can also see and answer the problems at the WBL web site. WBL Solvers Club uses *Washington Standard* as published July 1996. I accept only the first answer from each solver unless it is clear that the solver wants to correct his answer.

I personally score all the problems. If a majority of the solvers vote for an answer, and the answer is reasonable I will give that answer 100 points. I will not give 100 points to an answer that I consider bad no matter how many experts

vote for it. There are times when I want to make a point. I will give that answer 100 points and will therefore give the majority answer 90 points. For the other answers I consider how good the answer is and how many experts vote for it for its score. If you submitted an answer that got 20 points, that bid would get a bad score at the table. A good exercise would be to figure out why I gave your answer 20 points. You might have misread the problem.

The book *Washington Standard* second edition is out. If you are a serious bridge player, this book is a must. You can purchase a copy from Steve for \$25.00 whenever you see him or can send him a check for \$30.15 that includes \$5.15 for priority mail.

1) IMPs, None Vulnerable

♠AQ♥54♦K76542♣AK3

SOUTH	WEST	NORTH	EAST
1♦	Pass	1♠	Pass
????			

Action	Score	Votes	Solvers
2♣	100	7	84
3♦	80	2	44
2♦	70	1	60
3♣	40	0	6
2♥	40	0	1
2NT	40	0	1
1NT	30	0	3
2♠	20	0	1

How do you show an intermediate hand with a bad six-card suit? With a good diamond suit and 16 HCP you could jump to 3♦. If your diamonds were AQJ10xx, it would be clear to jump to 3♦. If partner passes 3♦ and he had a singleton or void, you would not have many trump losers. But try playing K76542 opposite a singleton or void. The modern way to go when you have a weak six-card diamond suit is to bid 2♣ first. If partner passes 2♣, you could be in the best contract. If partner continues, you can show your extra strength and your extra diamond length. You can also do this with weak six-card major. Don't jump in a suit that looks like a five-card suit.

Six experts agree with me and try 2♣. If

partner has ♠Axxxx♥Kxx♦Jx♣Jxx, he'll bid 2♦ to keep the bidding open since opener could have a hand not quite worth a jump shift.

Parker: "2♣—The classic modern bid hoping to get by this round and give partner a chance to clarify his hand. I will raise 2♠ and bid 2NT over 2♥."

Landen: "2♣—Common problem, the usual solution. Invent a suit to keep ball rolling. As 2♣ could be very strong, partner will strain to keep the bidding alive."

King: "2♣—If I get by this. Actually I would have opened 1NT and not had this problem."

It does make sense to open this hand 1NT to avoid rebid problems. When you open the bidding, you should be prepared for partner's worst response. If you're going to fudge, maybe it's better to fudge on your opening bid. That's why I open 1NT when I have 15-17 HCPs, a five-card major and a balanced hand. That's also why I very rarely open 1NT with a singleton king or queen.

Theurer: "2♣—The diamond suit quality is too poor to rebid 3♦. Some might have opened 1NT to avoid this rebid problem, but that doesn't solve everything either. The hand has a lot of controls and potential playing strength - partner could pass 1NT with many hands that offer good play for game. 2♦ is a significant underbid, again partner might pass on a lot of hands where game is good. 2♣ on the chunky three-card suit is less limited and partner will often give false preference to 2♦ even with two of that suit and three clubs, to keep the auction alive. ♦ over 2♦ or 3♣, probably raise to 3♠ over a 2♠ rebid and bid 2♠ over 2♥."

Woolsey: "2♣—I hate it, but everything else looks worse. Surely South should have anticipated the likely rebid nightmare and opened 1NT."

Schwartz: "2♣—I have the points for 3♦ but not the suit. 2♣ encompasses a hand this strong and if partner passes, might even be the right spot. Maybe it's right to open 1NT to avoid this problem."

Three experts rebid their diamonds. I hope their partner doesn't pass it.

Cappelletti: "3♦—Too good for 1NT or 2♦. I would have opened 1NT."

Adams: "3♦—Tough to defend any response since I open 1NT to avoid this problem. I am simply too strong for a 1NT or 2♦ rebid, and 2♣ with 6-3 is for masterminds. Sorry suit not better, but point count right and we can still play other strains if partner does not pass."

The following expert will be a trick lower if partner passes.

Hopkins: "2♦— I don't have a great source of tricks or a known fit with partner. I will go slowly and catch up if partner shows game or slam interest."

If you have a very bad six-card suit, it's often right to bid a lower suit rather than jump in your six-card suit.

2) IMPs, They're Vulnerable

♠AQ3♥42♦AK54♣AQ106

SOUTH	WEST	NORTH	EAST
1♦	3♠	4♥	Pass
????			
Action	Score	Votes	Solvers
Cue	100	3	39
RKC	90	2	96
6NT	90	4	15
Pass	70	1	25
6♥	70	0	9
5♥	70	0	3
5NT	40	0	7
5♣	30	0	5
5♦	20	0	1

I assume that the solvers meant 4NT as asking for aces and 4♠ as a cue bid. From the expert's comments, I could tell whether they were cuebidding or asking. I assume that a partnership would know what bid is ace asking and what bid is a cue bid.

You have ♠x♥KQJ10xxx♦Jxx♣xx or ♠x♥AQ109xx♦xxx♣xxx. Your partner opens 1♦ and RHO overcalls 3♠. Wouldn't you bid 4♥? I would. Actually I'd bid 4♥ holding ♠x♥AQJxx♦Qxx♣Kxxx. When they have one major, we have the other. Do you really want to be in 6NT opposite the first two hands? This hand is worth a slam try, not a slam force. If you make a slam try such as 4♠ or 5♥ and partner rejects, how good can slam be?

Four experts bid 6NT. If partner has one of my example hands, you could easily be playing 6NT out of your hand. 6NT is a non-thinking bid. If you're going to bid 6NT, why not ask for keycards first? If partner does not have solid hearts, he will need an entry in order to run the hearts. If partner has solid hearts, you might belong in seven.

Parker: "6NT—Science be damned. I want the lead to come up to my hand. If partner has something like seven solid hearts and a King he can bid the grand. I don't know if partner would think 4NT was to play or asking for keycards, so I bid what I think I can make."

The only time 4NT is to play is if the last

bid by your side was a natural 3NT.

Cappelletti: "6NT—Admittedly gambling but will probably make a large percentage of the time."

King: "6NT—Partner thought (hoped?) he could take ten tricks opposite a minimum opener. I have two tricks more than that."

I think it's more likely that partner thought that he could make six tricks opposite a minimum opener.

Theurer: "6NT—The opponents preempt has done its job and significantly crowded our auction. LHO bid 3♠ at unfavorable on a broken suit so he probably has a card on the side and or extra shape. Partner doesn't need an awful lot to bid 4♥, but since slam is excellent opposite a minimum such as ♠x♥KQJTx♦xxx♣KJx, I'm certainly way too good to make a pessimistic pass of 4♥.ot and bid slam. In theory partner is unlimited and a grand is possible, but bad breaks are a good possibility given the preempt and I don't have the space and tools to find out everything I need. I would prefer to play the hand to protect my spade tenace so I'll take the reasonable shot at slam here. Would 4♠ be a cuebid and guarantee a heart fit or Kickback for hearts here with 4NT being a spade cuebid? Or could it just be a general strong hand with or without a heart fit?another reason to just shoot out slam to avoid confusion with those possible slam tries."

Wouldn't he bid 4♥ holding ♠x♥KQJTx♦xxx♣xxx? I would.

One expert asks for keycards.

Woolsey: "4NT—Four notrump or 4♠ if that is my RKC call. I'm going to have to drive this hand to slam, so I might as well find out how good partner's hearts are which will help me choose the right strain. If 4♠ is my RKC call and I hope it is, then a follow-up 5NT will be pick-a-slam, so we can back into a 4-4 minor-suit slam if partner's hearts aren't too strong."

Three experts agree with me and cue bid. Cue bidding allows you to bid 5NT later as choice of slams.

Schwartz: "4NT—Spade cue bid playing kickback.ce to slam but too strong to pass 4♥."

Hopkins: "4♠—Partner shouldn't have a really bad hand with Heart length since I still have a chance to call if he passed. I'll make a try and see if I get cooperation. I will treat partner's 4NT as RKC for Hearts."

One expert bids 4♠ no matter what it means. I'm sure he'd know what 4♠ means depending on whom he was playing with.

Adams: "4♠—I usually play this as RKC

for Hearts. Playing kickback, 4NT would be a cue bid with spades. Note that if not playing kickback, I would still bid 4♠. Why would I cue bid playing one method, and bid RKC playing the other? 1. 4♠ is cheaper. 2. Cue bid with 4NT leaves no RKC and no re-cue bid for partner. RKC 4NT is not good bridge as one without Queen gets us past 5♥ in search for the Queen. Back to my preferred method. If I use 4♠ as RKC, I can invite a grand opposite two with Queen, and I can give choice of slams (via 5NT) opposite two or one with Queen. Partner should respect that I do not have a lot of room, and that choice of slam means my hearts not great. Note I am not worried about wrong siding notrump. If partner has zero Keys, we will play 5♥. Summary... Bid 4♠ no matter which way you play it. It's more flexible than 4NT."

One expert thinks we're high enough. He thinks it's important to give partner room.

Landen: "Pass—This might end up missing a grand, if partner has extras, but it's more likely he stretched to bid 4♥. Suits are breaking badly and so I'll try to go plus."

When an opponent preempts, you shouldn't hang partner when he could be making an overbid.

3) IMPs, None Vulnerable

♠72♥97♦AKQJ9♣A1072

SOUTH	WEST	NORTH	EAST
		1♣	Pass
2♣*	Pass	3♦**	Pass
???	*10+ **short diamonds		

Action	Score	Votes	Solvers
4♣	100	2	19
4♦	90	2	36
3NT	90	4	111
5♣	70	1	14
3♥	70	0	5
3♠	70	0	2
4NT	50	0	4
6♣	50	0	2
6♦	40	0	1
Pass	20	0	4
5♦	20	0	2
Abstain	-20	1	0

I've gotten complaints about the 2♣ bid. In order to have a good constructive auction you have to set trumps ASAP. Suppose you respond 1♦ and opener rebids 1♠. In order to force you must bid 2♥. You haven't shown your club support. Suppose partner is 4=3=1=5 with three lit-

tle hearts. He bids 3♥ and you still haven't shown your club support. Suppose over your 1♦ response LHO jumps to 3♠. Now what? Suppose your partner rebids 1NT over your 1♦ response. Now you have to bid two-of-a-major in order to force. You haven't supported clubs yet. Now partner raises to three-of-the-major. In order to support clubs, you have to bid 4♣ and partner would be scratching his head trying to figure out what you have. I think it's so important to set trumps ASAP, that I will make an inverted minor with only four-card support. However, if I have a four-card major, I will show that first.

Partner has reduced your hand to an eight count. Usually when partner shows shortness you subtract any kings, queens and jacks in that suit. This hand is an exception. Here we have probably five tricks even opposite partner's shortness. The good news about this hand is that you're playing IMPs. If you're playing matchpoints, you wouldn't want to play in 5♣, cold for 11 tricks in notrump. Therefore, assuming that 5♣ would always make, there is little downside bidding above 3NT. At matchpoints it's either 3NT or a slam. Give partner ♠Axx♥Axx♦x♣Kxxxxx and you could easily make 7♣.

Five experts signoff in game. 3NT or 5♣ will end the auction so there very little chance of getting to a cold slam. They don't understand that not only does 3♦ show diamond shortness, it also shows extra values. ♠QJxx♥QJxx♦x♣KQxx is not good enough to splinter. Partner is very likely to have at least five clubs when he splinters.

Parker: "3NT—I DO have diamonds stopped and he should have the majors stopped since he can't have much in Clubs. Maybe he has something like ♠KQx♥AQxx♦x♣Kxxxx or just change the heart Queen to the club Queen."

If partner happens to hold ♠Axxx♥Kx♦x♣KQxxxx, would you really want to be in 3NT from your side? You go down in 3NT when you're cold for 6♣.

Adams: "3NT—Anything other than 3NT could be interpreted as lacking diamonds and get us too high, so I am end played into wrong siding this. 2♣ was a silly call. 2♣ should show a five-card suit, four only when I do not have an obvious alternative. This hand should respond 1♦. After 1♦, we would be able to have simple bidding, and get notrump played from partner's side. Imagine this auction: 1♣ - 1♦ - 1NT - 2♦ - 2any - 3♣ where 2♦ is game-forcing-checkback and 3♣ shows diamonds and clubs. Now I have shown my hand and I can respect any-

thing partner does, and notrump is right sided."

It's nice if you're playing two-way-checkback and it's on after 1♣ - 1♦ - 1NT. However, most pairs do not play two-way checkback. Responding 1♦ could confuse the issue.

Hopkins: "3NT—Contract most likely to make. I presume we are adopting a Canape style of bidding?"

Schwartz: "3NT—Must admit I would start with 1♦, but with only four clubs and no control in the majors, can't drive past 3NT."

One expert makes a bid with no upside. Partner can't bid a slam.

Cappelletti: "5♣—I would bid 3NT at matchpoints but 5♣ is probably safer at IMPs."

Three experts join me and try for slam. Again most partnerships would know what 4♦ means. If you're playing Kickback, 4♦ would ask for keycards with clubs as trumps. That would be my preferred meaning. If you're not playing Kickback then 4♦ is a cue bid. I like 4♣. If partner has a minimum hand, (but can't be that bad) he can bid 5♣. Since I didn't bid 3NT, I probably don't have the wasted KQ of diamonds.

Theurer: "4♣—For his splinter, partner has at least four clubs, frequently will have five clubs. 4=4=0=5, 3=4=1=5 or 4=3=1=5 patterns are quite possible in addition to 4=4=1=4. I don't have anything to cuebid in the majors but I do have extra values and want to make a forward going move to show slam-cooperative interest - a typical hand for partner, ♠Axxx♥KQxx♦-♣KQxxx, would be a fine hand for 6♣. I assume partner's splinter puts us in a game force, thus 5♣ by me here would be fast arrival showing the weakest possible hand, with no slam interest but not interested in playing 3NT. 3NT would be also discouraging with lots of diamond wastage, few or no extras, not interested in slam unless partner has a moose. 4♣ should be forcing and shows a slam-cooperative hand but with no appropriate hand to bid 3♥ or 3♠ which should be cuebids or at least value-showing bids. Some might play that they show shortness. What is 4♦ here? If it is a cuebid then that's probably the right bid. But many would play that it is Kickback and if so I don't think that bid is right here. Should I be taking control with no major suit controls here? Can't partner have ♠QJxx♥AKQx♦-♣KQxxx? He'd bid 5♣ showing two keys and the club queen in response to 4♦ kickback, and now I'd be guessing whether we're off AK of a major. Thus if 4♦ is Kickback I will bid 4♣. If 4♦ is not Kickback then 4♦ would be a reasonable bid. Partner can bid 4♦ Kickback. If partner can't bid Kickback, he

may have two fast losers in a major and we do not want to be in slam. If he cuebids four-of-a-major then I will bid 4NT, which should be a hand better than bidding 5♣ but a hand that can't go past 5♣ because I don't have a control in the other major."

Woolsey: "4♦—I hope I'm playing sensible methods where this is RKC. I'll risk being off a cashing AK in a major if we have the necessary keycards. If this isn't RKC I would make the same bid, hoping partner would drive to slam with KQ of clubs, a side ace, and a side king."

Landen: "4♦—2♣ was a moronic bid. Why would anyone raise a possible three-card club suit in preference to bidding 1♦? Now, we're forced to guess between settling for 3NT and looking for 6♣. Its IMPs, so at least 5♣ making will be a decent result."

The following expert gets the score he deserves. There are no easy problems in a master solvers contest and sometimes you just have to guess. Abstaining gets you a -20.

King: "Abstain—This is just a pure guess in my view. If partner has ♠AKxx♥AJxx♦x♣Jxxx we belong in 3NT. If he holds ♠xxx♥AKJx♦x♣KOJxx we had better get to 5♣. Personally I think 2♣ was very misdirected and we should have started with 1♦. I think 3♥ or 3♠ by me right now should show values in that suit and ask for a stopper in the other one. I abstain."

I don't think it's right to splinter in this situation with xxx in a side suit.

There is nothing wrong with making an Inverted Minor with only four-card support.

4) IMPs, You're Vulnerable

♠KQ854♥KJ1064♦-♠1092

<u>SOUTH</u>	<u>WEST</u>	<u>NORTH</u>	<u>EAST</u>
???			3♦
<u>Action</u>	<u>Score</u>	<u>Votes</u>	<u>Solvers</u>
4♦	100	5	97
Pass	90	3	48
Dbl	70	1	38
3♠	70	1	14
3♥	70	0	1
4♠	30	0	1
4♥	30	0	1

This is a bidder's game. You have 5-5 in the majors which is what 4♦ shows. The only problem is that you're a little light in HCP. When the opponents preempt, you make gambling bids. If you had ♠Kx♥KJx♦KJx♠AQxxx, 95% of experts would overcall 3NT. If you had

♠xx♥KJ10xxx♦Ax♠Axx, 95% of experts would overcall 3♥. Is the problem hand that much weaker than my example hands. True, on bad days you might find LHO with ♠AJ10x♥AQxx♦x♣KQJx and you would go for a big number on my two examples as well as the problem hand. This doesn't happen in real life. If real life you catch partner with enough strength that you either make your contract or there's enough strength to go down one. When you are short in the opponent's suit, you should be aggressive. If your minors were reversed, then it makes more sense to pass.

Four experts join me and show both majors. Showing both majors is better than overcalling in one of your major. If partner is 4-2 in the majors, 4♦ gives you a 100% chance of playing in your nine-card fit.

Cappelletti: "4♦—Most likely to get to right spot although a bit light."

Theurer: "4♦—A tough decision. Usually the hand short in the opponent's suit is the one that needs to take action. Here, that's my hand. But there are issues. If I do bid, do I double, bid three-of-a-major, or bid 4♦ Michaels to get both suits into the picture? And, whatever I do bid, I'm bidding at unfavorable vulnerability and partner will likely take me for a better hand than I have, no matter what action I take. The problem with passing, though, is that it avoids one problem of what to bid and risks another - partner may have too many diamonds and too few of one major or the other to balance, and a vulnerable game may be missed. Imagine him with ♠xx♥Q9xx♦Kxxx♠AQx, for example. If I pass, will he balance over 3♦? Nope. Yet 4♥, even with his probably wasted diamond King, has reasonable play. It's a bidder's game, so I will hope for some working values and a major suit fit from partner, getting both suits in at the risk of going for a number or just getting too high. Another problem with passing is that LHO could extend the preempt via 4♦ or 5♦, potentially shutting us out even if partner has a decent hand with a fit for one or both majors."

Adams: "4♦—Hope partner can take a joke. Two decent suits are two chances to find a game. 4♦ is not safe, but neither is pass. Assume partner has some diamond length and will not be able to bid. Clear danger that partner hangs me, but playing with Robinson, I usually get some slack for this sort of bid. After 3♦ - Pass - Pass, partner has a problem, after 3♦ - Pass - 4♦ we are toast, so I risk 4♦ now. 3♦ - Pass - 3NT and we are really ill, as 3NT can be a semi-psyche. What

about Double? My experience to date doubling with five-card majors has been poor. Partner with ♠Axx♥Axx♦xxxx♣Axx will pass and we will be lucky if we set them, cold for four-of-a-major.”

Hopkins: “4♦—The opponent’s may have a huge Diamond fit and I want to get in early before the bidding skyrockets. They are very likely to sacrifice over our game or slam in this case, even if we can’t make our contract. And if things are going bad, there is a reasonable likelihood we have some sort of fit.”

Three experts pass.

Woolsey: “Pass—Just too weak to act. If I bid anything, partner will probably bid more than we can make.”

Woolsey ignores his void rule. “When you have a void you overbid by a trick because it’s very difficult to evaluate what the void is worth”. This does not include a void in partner’s suits.

Parker: “Pass—If they bid 3NT I will back in with 4♦. If I bid 4♦ or double now partner should assume I have much more. If it goes all pass then they will go down since partner has good diamonds. If he bids anything we will be in good shape, I can bid 4♦ over 3NT and raise any suit he bids.”

But what if LHO bids 5♦? Partner would have to pass 5♦ with ♠x♥Axxxx♦xxx♣AQxx and you’d have good plays for slam.

King: “Pass—It is very tempting to bid 4♦, but will you be comfortable if it goes 5♦ double after that? “

I’d be more comfortable then if it goes 5♦ pass. If I bid 4♦ and partner doubles 5♦, he would have club values and I’d expect 5♦ doubled to be our best spot. We won’t be cold for five-of-a-major and most of the time we’d beat 5♦. And it they make it, it’s not the end of the world.

One expert doubles. Double will get you to your nine-card major-suit fit but what about the eight-card fit?

Landen: “Double—This might turn out badly, but I think I have to act. The hand with shortness in the opponent’s suit bids. Having decided to take action, I might as well try for the whole enchilada and hope partner has a diamond stack.”

One expert overcalls 3♠. The big problem with bidding 3♠ is that if you have a heart fit, you’re unlikely to find it. You’d be playing in 3♠ opposite ♠x♥Axxxx♦xxxx♣Kxx. You’d have the same problem if you overcalled 3♥.

Schwartz: “3♠—Not enough to bid 4♦ at this vulnerability and passing is too likely to

end the auction.”

You can enter light when they preempt and you’re short in their suit especially if you can make a descriptive bid. Partner should take your possible lightness into account.

5) IMPs, None Vulnerable

♠10♥K6♦1062♣AKQJ532

SOUTH	WEST	NORTH	EAST
	1♠	Pass	Pass
???			
Action	Score	Votes	Solvers
3♠	100	8	39
3♣	80	1	50
3NT	70	1	15
2♣	70	0	62
Double	50	0	17
5♣	50	0	7
4♣	50	0	4
1NT	30	0	1
Pass	20	0	2
2♦	20	0	2
2♠	20	0	1

There are four ways to show a good hand with clubs. One way is to jump to 3♣. 3♣ shows a good six-card suit or longer with an opening hand. ♠xx♥xx♦AJx♣AKQxxx would be a minimum 3♣ bid. The second way is to jump to 3♠. 3♠ asks partner to bid 3NT with a spade stopper. If partner does not have a spade stopper, he’s supposed to bid 4♣, unless he has a hand where he wants to be in game opposite a solid minor suit. He might not know which minor you have. The third way is to double and then bid clubs. You know what I think about doubling when you’re short in an unbid major. The fourth way is to just bid 3NT.

I like 3♠. It gets you to 3NT opposite a spade stopper. The bonus is that it stops LHO from bidding a red suit at the three-level. The only problem is that you still need two tricks to make 3NT.

Cappelletti: “3♠—Western cue bid. My partner is likely to have some values.”

3♠ is not a Western cue bid. 3♠ shows a solid minor. Opposite a solid minor, partner most logical continuation is to bid 3NT with a stopper. If partner happens to have ♠AQxxx♥AQJx♦Q♣xxx, he could probably bid 6♣ and expect to make it. Forget the term Western Cue bid. There are many cue bids which do not ask for a stopper.

King: “3♠—If partner has a spade stop-

per, I want her to bid 3NT. “

Theurer: “3♠—I have two basic choices - 3♠, which will ask partner to bid 3NT with spades stopped. This is a reasonable description of my hand though even if partner has a spade stopper, we don’t have nine sure tricks even assuming clubs run. The other choice is 3♣, which shows a good-but-not-necessarily-solid six-card or longer club suit and intermediate 13-16HCP values. This will keep the bidding lower if partner has a poor hand and if he has values he can still bid 3NT or 3♠ to ask if I have spades stopped or 3♦ or 3♥ which would show values there and try for 3NT, 5♣ or a red suit contract. Partner would be limited by his failure to overcall 1♠, but he can still have some hands with opening-bid values but not enough for a two-level overcall. Both bids have their plusses and minuses. Because it’s IMPs and because with a stiff club partner will not play me for solid clubs if I bid 3♣ and thus pass on some hands where 3NT makes, I will make the aggressive call.”

Woolsey: “3♠—3♣ doesn’t do justice to this hand, since partner won’t be expecting a solid club suit so he won’t bid 3NT with a single spade stopper and one or two small clubs.”

Adams: “3♠—Will infer that partner has some HCP from the auction, and that 3NT will make more often than not when partner has a stopper. 3♠ also preempts a heart rebid by opener. My second choice is 3NT which is the right bid when partner has the spade stopper, might talk opener into a passive side suit lead when East has the missing spade card, or might convince the opponents that my hand type different. At the table, I might be bold enough to try it. I would definitely do it against known passive leaders, but not against players that consistently lead their best suit. Note that 3NT down one or

two can win IMPs. Third choice is 3♣, right on values, but partner will not play me for seven solid and a side king. Last choice is to pass: Giving West a second chance at game can cost me six IMPs, but bidding rates to get me a swing my way. I gain eleven for game, six or seven for partscore swing, one thru three for us down a little, or at least five if they bid again and go down.”

Hopkins: “3♠—Please have a Spade stopper and a little bit on the outside, partner!”

Good partner have at least two tricks.

Landen: “3♠—Asking for spade stopper, just as 1♠ - 3♠ does. Second choice is 3NT, which might be better.”

One expert underbids. With only one spade stopper, partner will not play you for a solid suit and therefore would be reluctant to bid 3NT when it’s right.

Parker: “3♣—Shows this type of hand, partner will stretch to bid 3NT with a stopper. 3♠ should ask for a stopper too, but we may get too high if he does not have one.”

One expert knows where he belongs and gets there quickly. I can just see the opening bidder with AKQ10x of spades make a safe lead and you take the first nine. Of course he might just lead a high spade and laugh when he sees dummy. On the other hand, he might have AKQJx or AKJxx of diamonds. He’ll know if there’s another way to beat 3NT.

Schwartz: “3NT—Must be some reason not to bid 3♠, here is mine. With only 13 HCP partner is odds on to have a spade stopper. If I bid 3♠ LHO can direct partner not to lead a spade when its right and now might get a heart lead through my king. Thus I bid 3NT directly which is the most likely right spot.”

3♠ is not only a descriptive bid, it’s also preemptive.

SOLVERS’ SCORES

John Adams	3♦	RKC	3NT	4♦	3♠	460
Mike Cappelletti	3♦	6NT	5♣	4♦	3♠	440
Robbie Hopkins	2♦	Q	3NT	4♦	3♠	460
Fred King	2♣	6NT	ab	Pass	3♠	360
Steve Landen	2♣	Pass	4♦	Dbl	3♠	430
Steve Parker	2♣	6NT	3NT	Pass	3♠	450
Steve Robinson	2♣	Q	4♣	4♦	3♠	500
Alan Schwartz	2♣	Q	3NT	3♠	3NT	430
Brad Theurer	2♣	6NT	4♣	4♦	3♠	490
Kit Woolsey	2♣	RKC	4♦	Pass	3♠	470

2012 TROPHY RACE STANDINGSwww.WashingtonBridgeLeague.org

Updated by our Webmaster, Don Berman

The Lovenberg Race is open to all WBL members; the Izzy Cohen Race is open to all WBL members who started the calendar year with less than 1500 masterpoints; the Tubbs Race is open to all WBL members who started the calendar year as a Non-Life Master with less than 500 masterpoints; the Woolridge Race is open to all WBL members who started the calendar year with less than 20 masterpoints.

Winners in each category receive four sessions of free plays. Second place gets two and third place gets one.

This list is up to date through May 17, 2012, not including the Unit KO. All points are subject to audit by the WBL Director.

Lovenberg

1	148.94	John Adams
2	106.20	Steve Robinson
3	63.05	William Cole
4	62.94	James Geist
5	60.41	Brad Theurer
6	56.56	Alfred Steinberg
7	54.63	Michael Richey
8	52.31	Peter Boyd
9	51.74	Mark Shaw
10	51.10	Lloyd Rawley
	51.10	Ellen Klosson
12	49.53	Donna Rogall
13	47.45	Jason Meyer
14	47.29	Clyde Kruskal
15	45.77	Leon Letwin
16	44.89	Donald Berman
17	44.73	Larry Kahn
18	42.28	David Ruderman
19	41.92	H John Edmonds
20	39.54	Robert Bell
21	38.41	Barry Falgout
22	37.93	Richard Wegman
23	36.78	Steven Schatzow
24	36.58	Ronald Zucker
25	35.92	William Hacker

Izzy Cohen

1	33.31	Guillaume de Decker
2	26.76	David Genne
3	26.11	Larry Wallace
4	24.61	Daniel Falk
5	23.81	Leon Masiewicki
6	23.57	Rosemary Shaw
7	23.55	Ajit Thyagarajan
8	22.17	Dale Sanders
9	20.75	Ernie Schuler
10	19.96	Eldon Compton
11	19.72	John McCormick
12	19.68	Alfred Liepold
13	19.41	James Beller
14	18.64	Julie Thomas
	18.64	Ollie Thomas

Tubbs

1	24.61	Daniel Falk
2	23.81	Leon Masiewicki
3	23.55	Ajit Thyagarajan
4	20.75	Ernie Schuler
5	19.96	Eldon Compton
6	19.72	John McCormick
7	18.64	Julie Thomas
	18.64	Ollie Thomas
9	15.77	Mirsad Mujezinovic
	15.77	Namik Haveric

Woolridge

1	13.46	Jane Marsh
2	13.46	Johnny Marsh
3	11.69	Myron Goldstein
4	10.69	Robert Linn
5	6.77	Tina Brinsfield
6	6.01	Mahmoud Katirai
	6.01	Shala Panbechi
8	5.07	George Joseph
9	4.80	Maree Webster
10	3.80	Catherine Bardsley

**0-20
LESSON
& GAME****GUARANTEED
PARTNERS!****7:00PM
LESSON****7:30 - 10ISH
GAME****JOIN ANYTIME**

The cost is \$5. This includes a 30 minute lesson followed by fun, enjoyable bridge for players with 0-20 masterpoints.

Lessons will cover slam bidding, weak twos, 3 level+ pre-empts, overcalls, takeout doubles, negative doubles, opening leads, and signaling. Each lesson will be tailored to the needs and interests of the players.

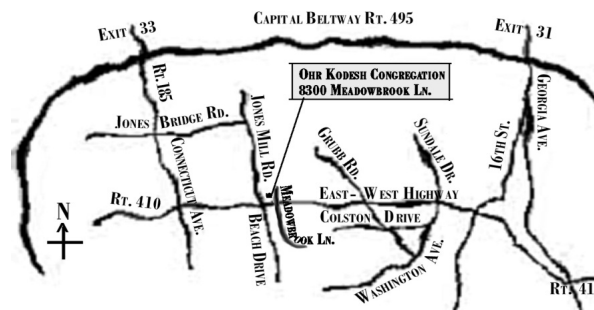
This is a great program for beginners as well as experienced social bridge players! Partners will be provided if needed. For more information, contact Bryan or Lois Geer at 301-236-0014 or by email at geerbridge@verizon.net.

~ ♣ ♦ **SCHEDULE** ♥ ♠ ~*Most games held at Ohr Kodesh*

06/14/2012Stratified STaC Pairs
 06/21/2012StrataFlighted Unit Championship
 06/28/2012StrataFlighted North American Pairs
 07/05/2012Closed: **Bethesda Regional**
 07/12/2012StrataFlighted Unit Championship
 07/19/2012StrataFlighted Unit Championship
 07/26/2012StrataFlighted North American Pairs
08/02/12**WBL Sectional
 08/09/2012StrataFlighted North American Pairs
 08/16/2012Stratified Unit Championship
 08/23/2012StrataFlighted Unit Championship
 08/30/2012StrataFlighted North American Pair
 09/06/2012NVBA Sectional
 09/13/2012StrataFlighted Upgraded Club Championship
 09/20/2012StrataFlighted Grand National Teams
 09/27/2012WBL Sectional
 10/04/2012District 6 STaC Stratified Pairs
 10/11/2012StrataFlighted Club Appreciation Pairs
 10/18/2012StrataFlighted BAM Teams; NLM Pairs

Bold dates held at other locations: *TBD; **Kensington Town Hall/Armory

For a Last-Minute Partner, to say you'll be late, to hear announcements (closings posted by 4pm), or to contact the Unit Game for any reason, call the WBL Cell Phone:

(301) 395-2760**MAP TO OHR KODESH CONGREGATION**

ALERT! The Unit Game is now played at Ohr Kodesh. NO OUTSIDE FOOD IS ALLOWED. Snacks and drinks will be provided.

**WBL GUARANTEED
PARTNER PROGRAM**

You never need to miss the unit game because you don't have a partner at the last minute! The WBL has a guaranteed partner (GP) program for players who occasionally need a partner for the unit game. Here's how it works: we provide a standby partner; if an odd number of people in need of a partner arrive, we match the players as best we can, and the GP plays with the one who is left. (If there is an even number of players looking, the GP goes home). You can always get a game.

Players in search of partners should try to arrive between 7:00 and 7:15 (or call ahead). The partnership desk closes at 7:25. You can call the WBL cell phone **(301) 395-2760** at the last minute if are on your way and know you'll be at bit late.

To find a partner in the Open or B/C/D game at least a day in advance, contact **Barbara Doran** at UnitGamePartner@DistrictSix.org or barbd@star-power.net, or call 301-608-0347 between 9am and 10pm. To find a partner for the NLM game, contact **Shawn Stringer** at 301-275-6363 or ShStringer@aol.com.

You might want to volunteer for the GP program yourself. It's a great way to meet people. If you play on the night you're the GP, you play free. If you volunteer, you receive a free play for any future unit game whether or not you play that night.

Partnerships Close AT 7:25pm
 TO START THE GAME PROMPTLY AT 7:30PM. CALL IF YOU'RE LATE, OR YOU MAY NOT BE ACCOMMODATED.

UNIT GAME CARPOOL AVAILABLE

To arrange a carpool, contact Don Berman, Carpool Coordinator, at 301-776-3581 or don.berman@verizon.net.Or log on to the WBL's **Online Carpool Notices** at: www.WashingtonBridgeLeague.org.

THE UNIT GAME

2012-2013 NORTH AMERICAN PAIRS

Gold Points! Red Points! Green Points! It's past time to start thinking about the **North American Pairs!** The North American Pairs is a North American Championship that begins in your club and concludes at the 2013 Spring NABC in St. Louis MO. Come out and play in a local club qualifier. You've got to play to win!

Club qualifying for the 2012-2013 event will be held during June, July, and August of 2012. There are three Flights, Open, 0-2000 and Non Life Master (with fewer than 500 points). Qualification in a flight qualifies you for all lower flights for which you are eligible. Qualification is by individual (not pair) — including flight eligibility — from any club qualifier in the ACBL directly to the District 6 Final. Flight eligibility is determined by your master-point holding on June 1, 2012. All players who play in the District Final must have qualified at the club level and be bona fide members of District 6. **There will be no exceptions.** See the District 6 website (www.districtsix.org) for information on club games in your area.

The **District 6 Final** for all flights will be held Oct. 13-14. The Open Flight and 0-2000 Flight Finals will be 4-session events, with roughly half the field qualifying for the second day. The NLM Final will be a 2-session event held Sunday, Oct. 14. **All flights will be played in the DC area.**

Pre-registration is required in order to play in the District Finals. Pairs must pre-register by October 4, 2012. Prepayment of \$50 (to cover a pair for 2-sessions) is required with registration. Details TBA.

Three pairs in each flight will qualify for the National Finals, to be held at the spring 2013 NABC in St. Louis. Qualifiers who play in the National Final will be subsidized (to various extents) for travel expenses and hotel rooms by the ACBL and/or District 6. Membership dues or Life Master service fee must be current and continuous from the start of the District Final to the completion of the NAP Final at the NABC in order to play in the National Final.

For more information: <http://www.districtsix.org> or Barbara Doran: (301) 608-0347 or barbd@starpower.net.

UPCOMING SECTIONALS

- ♠ August 2-5, 2012, WBL, Kensington, MD
- ♣ September 6-9, 2012, NVBA, Fairfax, VA
- ♦ September 22-23, 2012, WBL NLM, Kensington, MD
- ♥ September 27-30, 2012, WBL, Kensington, MD
- ♠ October 25-28, 2012, NVBA, Fairfax, VA
- ♣ January 3-6, 2013, WBL, Kensington, MD
- ♦ February 7-10, 2013, NVBA, Fairfax, VA

DO YOU HAVE ANY MUSCLE OR BRAINS TO SPARE?

The Washington Bridge League could use a little of either! In order to keep events exciting and entry fees low, the WBL relies on the goodness of our members to volunteer for small jobs at the Unit Game and Sectional Tournaments. Some jobs require brains while others require muscle. We'll be happy to employ either.

From setting up and breaking down tables, to publicity and events development, a little effort from you will make our bridge community even better. Busy schedule? No worries. Most volunteer assignments take only 15 minutes to 1 hour a month.

Here's how to help:

1. Reply by email, phone or in person if you are willing to help in any way.
2. Please indicate if you can offer any special skills (such as marketing or a strong back).
3. Someone will contact you shortly with a choice of assignments you can pick from.

Thank you in advance for any assistance you can provide.

Barbara Summers, Volunteer Coordinator, 301-598-5838, jimbarb1184@aol.com,

COMMITTEE ACTION #76

by Rich Colker, rcolker@gmail.com

The ACBL Alert procedure requires players who “by experience or expertise, recognize that their opponents have neglected to Alert a special agreement” to protect themselves. The following deal, played by four expert players, from the second qualifying session of the Life Master Pairs at the 2011 Fall NABC in Seattle, may help to shed some light on the limits of that responsibility.

Bd: 17

Dlr: North

Vul: None

North

♠ QJ5
♥ 975
♦ AQ653
♣ 73

West

♠ 106
♥ AJ1032
♦ KJ2
♣ 1062

East

♠ 43
♥ Q864
♦ 84
♣ AQJ84

South

♠ AK9872
♥ K
♦ 1097
♣ K95

West

Pass
Pass
Pass

North

Pass
2♣⁽¹⁾
Pass

East

Pass
Pass
Pass

South

1♠
4♠

⁽¹⁾ Drury, not Alerted

North noted the failure to Alert before the opening lead and East called the Director, who he told privately that he would have doubled 2♣ had it been Alerted but felt he could not ask about a non-Alerted bid without risking passing unauthorized information (UI) to his partner, West. North had told E/W at the start of the round

that they played strong notrumps and a “rubber bridge” style, making it plausible that N/S were not playing Drury. After the opening lead (the ♠6) South made 12 tricks in 4♠ for plus 480.

The Director, citing the section of the ACBL Alert Procedure quoted above and the part of the ACBL Club Director's Handbook which says “... an opponent who actually knows or suspects what is happening even though not properly informed may not be entitled to redress if he or she chooses to proceed without clarifying the situation,” ruled that the table result would stand since a seeded pair such as E/W here should have the experience/expertise to protect themselves.

E/W appealed the Director's ruling. East said he paused for a few seconds after his RHO bid 2♣ to allow South time to Alert the bid. When no Alert was forthcoming, he judged that N/S were one of (in his opinion) many pairs who did not play Drury. He explained that asking about the bid would have barred his partner from leading a club if 2♣ turned out not to be Drury. Furthermore, he believed that requiring him to ask about the bid would have put his side in an untenable position: if he was wrong and 2♣ was not Drury his partner would not have been allowed to lead a club from, say, 109x.

The Committee decision described in some detail the dilemma experienced by players who find themselves in positions like the one East experienced here. (In what follows I liberally paraphrase the case write-up for brevity.) N/S's agreement was that 2♣ was Drury. ACBL regulations require an Alert of Drury, so this was a failure to Alert and therefore constituted misinformation (MI). The non-offending side was clearly damaged by the MI. The Committee members reflected that at most tables at which Drury was played the 2♣

...continued on p. 18

bid was doubled, a club was led, and a heart shift was found. Therefore, assuming East was misinformed, reciprocal 450s should be assigned since no other outcome is at all probable.

The difficult point was raised by the regulations cited by the Director, who ruled that Drury was common enough and East's hand suggestive enough of a failure to Alert that East needed to protect himself by asking about 2♣. The Director pointed out that this regulation also applied to West. Once South bid 4♠ West pretty much knew that 2♣ had been Drury. He could have asked about the bid before acting in the passout seat. If it turned out that there had been a failure to Alert the Director could have backed up the auction, giving his partner a second chance to act. The Committee judged that this would not occur to even one player in 100 in West's position. Practically, requiring this sort of protection is not reasonable, so they judged that West did not have to protect the partnership. East, however, clearly strongly suspected that 2♣ was Drury before he acted.

Is "strongly suspected" enough to require protection? A case was recalled that occurred a few years ago in which a player held 22 HCP, heard a Flannery opening by an opponent, followed by a jump by the opener's partner described as "invitational." The Appeals Committee who heard the case decided that the player knew from his own hand and experience that the jump was intended as blocking, so he was on his own. That case was obvious: that player knew what was going on. A similar (made-up) example is one where a player holds 24 HCP and hears a 3NT opening on his right, with no Alert. He knows there should have been one. If he doesn't ask to protect himself, he gets no protection.

So where is the line in the sand? Is "strongly suspects" a failure to Alert enough? What if East had held: ♠x ♥Qxxx ♦xx ♣AQJ109x? Now he is pretty certain — though perhaps not one-hundred percent — that 2♣ wasn't natural. Where are the spades? Is that sufficient to require that East protect himself?

...continued on p. 20

2011 WINNERS WINNERS WINNERS WINNERS WINNERS WINNERSMAY 17, 2012.....ANNUAL MEETING & ELECTIONS REPORT.....

MINUTES OF THE 2012 WASHINGTON BRIDGE LEAGUE ANNUAL MEETING

from Ellen A. Cherniavsky, Secretary

The 2012 WBL Annual Meeting was called to order by President, **Don Berman** at 7:15 PM.

The minutes of the previous year's annual meeting were approved without objection.

Treasurer's Report

Treasurer, **Fred King** announced that losses this year totaled \$4000, down from an \$8000 loss the previous year. The biggest loss comes from the Bulletin at about -\$11,400 and the biggest money maker is the unit game at +\$6500. All other items are between +\$1500 and -\$1900. We are in good financial shape overall. The WBL received an anonymous gift of \$25,000 last year. The Treasurer's Report was accepted without objection.

Richard turned the meeting over to **Jim Allen**, Elections Chairman, who asked for nominations from the floor for officers for the fiscal year 2012. A slate of officers nominated through the petition process was available. No further nominations were made. Nominations were closed and the slate of: **Richard Ferrin** for President, **Ellen Cherniavsky** for Vice President, **Linda Marshall** for Secretary, **Rose Berman** for Treasurer, was elected unanimously.

For Directors, **Jim Geist**, **Oliver Thomas** and **Norman Mitchell** were elected. Hearing no further nominations, nominations were closed and the slate was elected unanimously.

Jim turned the meeting back to Don.

Don Berman presented the Ace-of-Clubs and Mini-McKenney awards.

The meeting was adjourned at 7:22 pm.



2011 WBL PROFIT & LOSS SUMMARY

Item	Income	Expenditure	Net
Admin.	\$8,897.14	\$7,433.72	\$1,463.42
Sectionals	\$68,116.14	\$70,008.55	-\$1,892.41
Unit Game	\$65,248.25	\$58,674.56	\$6,573.69
Bulletin	\$3,000.00	\$14,410.61	-\$11,410.61
RR & KO	\$1,698.92	\$638.75	\$1,060.17
Totals	\$146,960.45	\$151,166.19	-\$4,205.74



ACE OF CLUBS WINNERS

0 to 5.....	Lester Slaback
5 to 20.....	Thomas Grahame
20 to 50.....	Margarett Whilden
50 to 100.....	John McCormick
100 to 200.....	Georgette Weiss
200 to 300.....	Forest Montgomery
300 to 500.....	Patti Anschutz
500 to 1000.....	Alfred Caponiti
1000 to 2500.....	Roma Chandra
2500 to 5000.....	William Peters
5000 to 7500.....	Steven Schatzow
7500 to 10,000.....	Barbara Shaw
Over 10,000.....	Eugene Kales

MINI-McKENNEY WINNERS

0 to 5.....	Lester Slaback
5 to 20.....	Patrick Frye
20 to 50.....	Margarett Whilden
50 to 100.....	John McCormick
100 to 200.....	Georgette Weiss
200 to 300.....	Norman Mitchell
300 to 500.....	Stanley Hurwitz
500 to 1000.....	Calvin Konner
1000 to 2500.....	Shawn Stringer
2500 to 5000.....	Barry Bragin
5000 to 7500.....	Steven Schatzow
7500 to 10,000.....	Robert Bell
Over 10,000.....	Steve Robinson



Finally, the Committee judged that “recognized” means “knows intuitively” as in “recognized at a glance” and not just “strongly suspects.” Suppose, for example, an opponent opens 1NT, his partner bids 2♦, and there is no announcement. Is that enough to assume 2♦ was a transfer? The Committee thought not. But if opener then bids 2♥ that should trigger the “Did you guys fail to announce 2♦ as a transfer?” question. In the present case the jump to 4♠ makes it obvious that 2♣ was Drury, but 2♣ by itself was not enough to make it obvious.

All in all, this was a close case. On the one hand the offending side committed an infraction which damaged the non-offending side, who were unwilling to ask a “bad” question for fear of compromising their rights. On the other hand the regulations can be interpreted to require that East protect himself. Since most honest players would not ask about a non-Alerted call here the Committee judged that equity in this case was

reciprocal 450s, 4♠ by South making five.

To my mind it violates the spirit of the game to hold players accountable for transmitting UI if they ask about a clearly suspect call, but to force them forfeit the opportunity to act in their best interest (by doubling 2♣ in the present case) if they don't ask — especially when it was an opponent's infraction that caused the problem in the first place. (Catch-22. Damned if you, damned if you don't.) We don't want experienced players to seek out so-called “double shots” (not asking about a call they “knew” should have been Alerted to get to keep the table result if it turns out that no Alert was required but to then call the Director for a score adjustment if the call was Alertable just as they suspected). That's why the cited ACBL regulations were written. But special care needs to be taken to protect the “innocent” side in cases where it is less than perfectly clear (or “known intuitively” or “recognized at a glance”) that an irregularity has occurred. Perhaps this is quite a fine line to walk, but it's one we must strive to navigate with discernment.

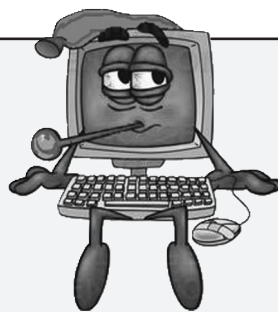
Is your computer old? Sluggish?
Brand new? Not connected?

Your computer Rx is here!

- Get online
- Help with purchase
- Computer tuneup
- Virus removal
- Networking
- email
- OKBridge
- BridgeBaseOnline (BBO)

Learn to use

- Your PC
- Browser
- Word, Excel
- Flickr
- Youtube
- Facebook
- Twitter



Paid Advertisement

- Kidproofing
- Security issues
- Backup strategies
- Chicken soup
- and more...



Diane Walker

dibasoft
Computer Consulting

240 899-8534 - cell
diane@walkersweb.org

Paid Advertisement

66TH ANNUAL WBL CITY OF WASHINGTON TOURNAMENT

April 12-15, 2012

Results

TOP TEN CUMULATIVE POINT WINNERS

All Players

1	33.30	John Adams
2	21.60	Mark Shaw
3	21.29	Peter Boyd
4	20.58	Richard Wegman
5	19.89	Steve Robinson
6	18.34	William Cole
7	16.30	Stephen Drodge
8	16.10	Donna Rogall
9	15.30	Barack Peled
10	15.30	James Beller

Players with fewer than 1500 masterpoints

1	16.30	Stephen Drodge
2	15.30	Barack Peled
3	15.30	James Beller
4	12.93	Ronald Steinberg
5	11.02	Ajit Thyagarajan
6	9.73	Lawrence Heinen
7	9.58	Behnaz Fardshisheh
8	9.51	Thomas Reckford
9	9.49	Sylvia Shi
10	8.55	Guillaume de Decker

Players with fewer than 500 masterpoints

1	11.02	Ajit Thyagarajan
2	9.73	Lawrence Heinen
3	7.46	Alexander Prairie
4	6.49	John Gauss
5	6.31	P Gould
6	5.71	Margarett Whilden
7	5.62	Bruce Steinwald
8	5.61	Jim Walsh
9	5.48	David Marshall
10	5.37	Terence McCarthy
11	5.37	Anthony Hawks

Players with fewer than 100 masterpoints

1	5.61	Jim Walsh
2	4.55	Gerald McGowan
3	3.44	Yasmin Jiwa
4	3.44	Jeanne Haji
5	3.43	Catherine Bardsley
6	3.36	Tina Brinsfield
7	3.36	Cheri Hayes
8	2.70	Johnny Marsh
9	2.70	Jane Marsh
10	2.12	David Penn

THUR MORN OPEN PAIRS @ROCKVILLE

Stratum A, 23.0 Tables

1	Ronald Steinberg - Barack Peled	.67.82
2	Robert Levey - Warren Manison	.66.67
3	Diane Walker - Barry Falgout	.66.20
4	Ann Ingram - Irving Lessin	.61.34
5/6	Bruce Steinwald - P Gould	.60.19
5/6	William Pettis - Robert Bumgardner	.60.19

Stratum B, 14.0 Tables

1	Ronald Steinberg - Barack Peled	.67.82
2	Bruce Steinwald - P Gould	.60.19
3	Annapurna Satpathy - Dev Chattopadhyay	.58.33
4	Lotta Brafman - Jesse Stern	.57.18
5	Richard Ray - Barbara Sadick	.56.02
6/7	Lester Slaback - John Jackson	.53.01
6/7	Behnaz Fardshisheh - Pari Khoshkish	.53.01

Stratum C, 7.0 Tables

1	Bruce Steinwald - P Gould	.60.19
2	Annapurna Satpathy - Dev Chattopadhyay	.58.33
3	Lotta Brafman - Jesse Stern	.57.18
4	Lester Slaback - John Jackson	.53.01
5	Barbara Levine - Neil Crane	.50.93

THUR EVE FLT A/X PAIRS

Stratum A, 39.0 Tables / Based on 89 Tables



1	Ellen Klosson - Peter Boyd	.66.49
2	Benjamin Brill - William Hacker	.62.23
3	Guillaume de Decker - Ajit Thyagarajan	.60.96
4	John Glynn - Ellen Glynn	.60.88
5	James Summers Jr - Barbara Summers	.60.24
6	John Glynn - Ronald Susi	.60.14
7	Barry Falgout - Rusty Krauss	.59.72
8	Steve Robinson - John Adams	.59.60
9	Sylvia Shi - Alexander Prairie	.59.51

Stratum X, 19.5 Tables

1	Guillaume de Decker - Ajit Thyagarajan	.60.96
2	John Glynn - Ellen Glynn	.60.88
3	James Summers Jr - Barbara Summers	.60.24
4	John Glynn - Ronald Susi	.60.14
5	Sylvia Shi - Alexander Prairie	.59.51
6	Debnarayan Dhar - Dharendra Ghosh	.56.94

THUR EVE FLT B/C/D PAIRS

Stratum B, 24.0 Tables

1	Gerald McGowan - John Adams	.63.39
2	Jim Walsh - David Marshall	.62.31

- 3 Michelle Zygielbaum - Louis Coccodrilli 59.85
4/5 Paul Setzer - Kellen Leister59.52
4/5 Leo Cardillo - Stephen Colevas59.52
6 Eldon Compton - Gabriel Cornett ...58.90

Stratum C, 20.5 Tables

- 1 Gerald McGowan - John Adams63.39
2 Jim Walsh - David Marshall62.31
3 Michelle Zygielbaum - Louis Coccodrilli 59.85
4 Paul Setzer - Kellen Leister59.52
5 Eldon Compton - Gabriel Cornett ...58.90
6 Stanley Hurwitz - Linda Silberg57.39

Stratum D, 15.0 Tables

- 1 Gerald McGowan - John Adams63.39
2 Jim Walsh - David Marshall62.31
3 Michelle Zygielbaum - Louis Coccodrilli 59.85
4 Paul Setzer - Kellen Leister59.52
5 Eldon Compton - Gabriel Cornett ...58.90
6 John Gauss - Carolyn Baird56.55

THUR EVE NLM PRS @ WBL

Stratum A, 11.0 Tables



- 1 David Penn - Maxine Penn (pic) ...61.90
2 Susan Holbeck - Anne Menkens ...61.76
3 Tina Brinsfield - Cheri Hayes60.85
4 Hanna Wagner - Mark Feldman59.82
5 Margaret Cooke - Peter Isard57.18
6 Margaret Whilden - Edmund Gehan .54.80

Stratum B, 8.5 Tables

- 1 David Penn - Maxine Penn61.90
2 Susan Holbeck - Anne Menkens ...61.76
3 Tina Brinsfield - Cheri Hayes60.85
4 Hanna Wagner - Mark Feldman59.82
5 Margaret Cooke - Peter Isard57.18

Stratum C, 5.0 Tables

- 1 Susan Holbeck - Anne Menkens ...61.76
2 Tina Brinsfield - Cheri Hayes60.85
3 Margaret Cooke - Peter Isard57.18
4 Donald Cohen - Sidney Schiller54.17

THUR EVE 199ER PRS @ NVBA

Stratum A, 9.5 Tables

- 1 Wayne Bardsley - Catherine Bardsley 64.73
2 Rozelin Prochaska - Nancy Tarlano .63.23
3 Kermit Quick - John Witherell62.93
4 Brian Brunsvold - Katherine Culp ...59.10
5 Jon Guyton - Maura McGinn54.52
6 Joseph Drodge - Diana Jarrett54.18

Stratum B, 6.5 Tables

- 1 Wayne Bardsley - Catherine Bardsley 64.73
2 Rozelin Prochaska - Nancy Tarlano .63.23
3 Kermit Quick - John Witherell62.93
4 Jon Guyton - Maura McGinn54.52
5 Joseph Drodge - Diana Jarrett54.18

Stratum C, 3.0 Tables

- 1 Wayne Bardsley - Catherine Bardsley 64.73
2 Rozelin Prochaska - Nancy Tarlano .63.23

THUR EVE NEWCOMER PR @WBL

Stratum A, 6.0 Tables

- 1 Eleanor Sontag - Lillian Glaser66.68
2 Patricia Welty - Patricia Price61.83
3 Helen Van Lowe - Natalie Brodsky ...59.80
4 Roslyn Eisner - William Eisner55.15

Stratum B, 5.0 Tables

- 1 Eleanor Sontag - Lillian Glaser66.68
2 Patricia Welty - Patricia Price61.83
3 Helen Van Lowe - Natalie Brodsky ...59.80
4 Roslyn Eisner - William Eisner55.15

Stratum C, 3.0 Tables

- 1 Eleanor Sontag - Lillian Glaser66.68
2 Helen Van Lowe - Natalie Brodsky ...59.80

FRI MORN FLT A/X PAIRS

Stratum A, 11.0 Tables / Based on 34 Tables

- 1 James Beller - Lawrence Heinen ...62.80
2 Amy Bloom - James Stormes61.90
3 Mita Banerjee - Shou-Ling Wang ...59.82
4 Edna Doigan - Forest Montgomery ...58.04
5 Judith Shulman - Michael Klein57.14
6 Alfred Steinberg - Andrew Gofreed ...55.95

Stratum X, 5.5 Tables

- 1 James Beller - Lawrence Heinen ...62.80
2 Amy Bloom - James Stormes61.90
3 Ajit Thyagarajan - Robert Levey ...54.76
4 David Loken - Kathrine Loh53.27

FRI MORN FLT B/C/D PAIRS

Stratum B, 14.0 Tables

- 1 Peter Gould - Bruce Steinwald58.14
2 Thomas Reckford - Behnaz Fardshisheh 56.82
3 Bernice Hacke - John Gauss55.30
4 Elaine Conway - Richard Bryan53.98
5 Anne Marie Hannon - William Hannon 53.79
6/7 Dale Collinson - Susan Collinson ...53.60
6/7 Silas Wasserstrom - Michael Gottesman 53.60

Stratum C, 12.0 Tables

- 1 Peter Gould - Bruce Steinwald58.14
2 Thomas Reckford - Behnaz Fardshisheh 56.82
3 Anne Marie Hannon - William Hannon 53.79
4/5 Dale Collinson - Susan Collinson ...53.60
4/5 Silas Wasserstrom - Michael Gottesman 53.60
6/7 Donna Stoker - Edward Stoker53.22
6/7 Howard Stevens - Patricia Mozer ...53.22

Stratum D, 7.0 Tables

- 1 Peter Gould - Bruce Steinwald58.14
2 Dale Collinson - Susan Collinson ...53.60
3/4 Donna Stoker - Edward Stoker53.22
3/4 Howard Stevens - Patricia Mozer ...53.22
5 Jenny Shaefer - Alexander Shafer ...52.65

FRI MORN NLM PAIRS

Stratum A, 9.0 Tables



- 1 Dev Chattopadhyay (pic) - Asim Mandal 63.39

- 2 Gail Harrison - Brian Brunsvold ...60.71
3 Yasmina Patel - Parviz Steeds59.52
4 Neil Singer - Michael Barth57.14
5 Sheila Kaplan - Marie Saeger55.65

Stratum B, 7.5 Tables

- 1 Gail Harrison - Brian Brunsvold ...60.71
2 Neil Singer - Michael Barth57.14
3 Sheila Kaplan - Marie Saeger55.65
4 Heide Blaker - Lynne Battle54.17
5 Thayer Baine - Lindsay Eakin52.68

Stratum C, 3.0 Tables

- 1 Neil Singer - Michael Barth57.14
2 Heide Blaker - Lynne Battle54.17

FRI AFT FLT A/X PAIRS

Stratum A, 15.0 Tables / Based on 39 Tables



- 1 Mark Shaw - Leo LaSota63.07
2 John Adams - William Cole60.80
3 Steve Robinson - William Pettis ...60.04
4 Rammohan Sarangan - Hank Meyer ...58.52
5 Robin Taylor - Mickie Kivel57.77
6 Leon Letwin - Donald Berman57.39

Stratum X, 6.0 Tables

- 1 Lloyd Rawley - Kitty Gottfried50.57
2/3 James Beller - Lawrence Heinen ...48.48
2/3 Irv Kipnis - Margie Coccodrilli ...48.48
4 Adrienne Kuehneman - Melanie Manfield45.64

FRI AFT FLT B/C/D PAIRS

Stratum B, 16.0 Tables



- 1 Michael Gottesman - Silas Wasserstrom 64.77
2 Ernie Schuler - Robert Sturm63.07
3 Mike Frosch - Francesco Parisi-Presicce 59.66
4 Annapurna Satpathy - Shyamalendu Pal 58.71
5 Anne Marie Hannon - William Hannon 58.52
6/7 Larry Moran - Douglas Fox56.06
6/7 Jane De Briyn - Dick Kreimborg ...56.06

Stratum C, 13.5 Tables

- 1 Silas Wasserstrom - Michael Gottesman 64.77
2 Ernie Schuler - Robert Sturm63.07
3 Annapurna Satpathy - Shyamalendu Pal 58.71
4 Anne Marie Hannon - William Hannon 58.52
5/6 Larry Moran - Douglas Fox56.06
5/6 Jane De Briyn - Dick Kreimborg ...56.06

Stratum D, 8.0 Tables

- 1 Ernie Schuler - Robert Sturm63.07
2 Annapurna Satpathy - Shyamalendu Pal 58.71

- 3 Jenny Shaefer - Alexander Shafer ...55.68
4/5 Donna Stoker - Edward Stoker55.49
4/5 Daniel Falk - Larry Wallace55.49

FRI AFT NLM PAIRS

Stratum A, 8.0 Tables

- 1 Susan Weiss - Bernice Felix64.58
2 Margaret Whilden - Edmund Gehan .63.10
3 Julie Thomas - Ollie Thomas58.33
4 Donna Hankey-Woods - Douglas Woods 56.25
5/6 Prabhakar Tamboli - Albert Pike III .52.98
5/6 Pat Kibler - Donald Smith52.98

Stratum B, 6.0 Tables

- 1 Julie Thomas - Ollie Thomas58.33
2/3 Prabhakar Tamboli - Albert Pike III .52.98
2/3 Pat Kibler - Donald Smith52.98
4 Reina Lerner - Sharon Sapoznikow .51.79

Stratum C, 2.5 Tables

- 1 Pat Kibler - Donald Smith52.98
2 Reina Lerner - Sharon Sapoznikow .51.79

FRI EVE FLT A/X BAROMETER PRS

Stratum A, 15.0 Tables / Based on 24 Tables



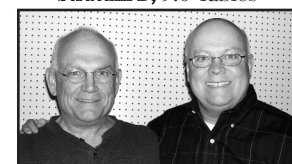
- 1 John Adams - Steve Robinson65.79
2 Donald Berman - Leon Letwin63.04
3 Donna Rogall - David Ruderman ...60.09
4 Johnny Marsh - Jane Marsh59.04
5 Benjamin Brill - Leo LaSota59.01
6 Ronald Kral - Jim Dick56.39

Stratum X, 7.5 Tables

- 1 Johnny Marsh - Jane Marsh59.04
2 Sylvia Shi - Matthew Lahut56.09
3 John Lowe III - Howard Grunin53.41
4 Ronald Zucker - Adrienne Kuehneman 53.09
5 Shawn Stringer - Richard Ferrin ...51.57

FRI EVE FLT B/C/D BAROMETER PRS

Stratum B, 9.0 Tables



- 1 Dale Sanders - David Williams62.50
2 Mary Ann Kral - Sheryl McEwan ...58.33
3 Anthony Hawks - Terence McCarthy .57.29
4 Jill Benson - David Benson56.51
5 Al Stolpe - Thomas Jennings55.47

Stratum C, 7.5 Tables

- 1 Dale Sanders - David Williams62.50
2 Anthony Hawks - Terence McCarthy .57.29
3 Jill Benson - David Benson56.51
4 Al Stolpe - Thomas Jennings55.47
5 Charles Dearolf - Judith Dausch ...54.17

Stratum D, 4.0 Tables

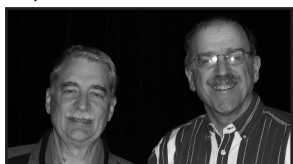
- 1 Jill Benson - David Benson56.51
- 2 Charles Dearolf - Judith Dausch54.17
- 3/4 Jim Walsh - Robert Maman52.34
- 3/4 Catherine Bardsley - Wayne Bardsley 52.34

SAT COMPACT KO - BKT #1**10 Tables**

- 1 Stephen Rzewski - Rammohan Sarangan - Hank Meyer - Michael Klein
- 2 Brad Theurer - Martin Graf - Mark Shaw - Lyle Poe Jr
- 3 Gene Kuehneman - Robin Taylor - Mickie Kivel - Lou Reich
- 4 Adair Gellman - Vincent Bartone - Rusty Krauss - Stephen Drodge

SAT COMPACT KO - BKT #2**11 Tables**

- 1 William Young - Deborah Hoveland - Mel Yudkin - John Christensen
- 2 Dennis Schwanz - Susan Miskura - Mike Frosch - Francesco Parisi-Presicce
- 3 Sylvia Shi - Hakan Berk - Murat Berk - Alexander Prairie
- 4 Jesse Stern - Lotta Brafman - Eldon Compton - Gabriel Cornett

SAT MORN FLT A/X PAIRS**Stratum A, 16.0 Tables / Based on 47 Tables**

- 1 Fred King - Robert Bell60.04
- 2 Mark Lavine - Ronald Kral59.85
- 3 Donald Berman - Leon Letwin59.66
- 4 David Ruderman - Richard Wegman59.09
- 5 Christopher Miller - James Stormes58.14
- 6 Stan Schenker - David Milton57.20

Stratum X, 6.0 Tables

- 1 Christopher Miller - James Stormes58.14
- 2 Renate Conlon - Ronald Conlon53.60
- 3 James Geist - Richard Ferrin52.46
- 4 Roma Chandra - Leonid Fastovsky50.00

SAT MORN FLT B/C/D PAIRS**Stratum B, 16.0 Tables**

- 1 Thomas Reckford - Behnaz Fardshisheh 60.04
- 2 John Gauss - Carolyn Baird57.39
- 3 Joan Anania - Edward Anania56.82
- 4 Alan Ferraro - Temma Kanowith56.63
- 5 Suzanne Floyd - Forest Montgomery56.44
- 6/7 James Gerding - Elizabeth Gerding55.30
- 6/7 Michael Anesko - Betsy Eliot55.30

Stratum C, 13.5 Tables

- 1 Thomas Reckford - Behnaz Fardshisheh 60.04
- 2 John Gauss - Carolyn Baird57.39
- 3 Joan Anania - Edward Anania56.82
- 4 Alan Ferraro - Temma Kanowith56.63
- 5 Suzanne Floyd - Forest Montgomery56.44
- 6 James Gerding - Elizabeth Gerding55.30

Stratum D, 6.0 Tables

- 1 John Gauss - Carolyn Baird57.39
- 2 Joan Anania - Edward Anania56.82
- 3 James Gerding - Elizabeth Gerding55.30
- 4 Thomas Jennings - Albert Stolpe53.22

SAT MORN NLM PAIRS**Stratum A, 15.0 Tables**

- 1 Julie Thomas - Ollie Thomas59.66
- 2 Tina Brinsfield - Cheri Hayes58.78
- 3 Della Morris - Ruth Freedman58.68
- 4 Maxine Penn - Barbara Levine58.18
- 5 Ronnie Loeser - Ruth Fu57.08
- 6 Reina Lerner - Sharona Sapoznikow56.63

Stratum B, 13.0 Tables

- 1 Julie Thomas - Ollie Thomas59.66
- 2 Tina Brinsfield - Cheri Hayes58.78
- 3 Maxine Penn - Barbara Levine58.18
- 4 Reina Lerner - Sharona Sapoznikow56.63
- 5 Maryellen Leister - Dottie Terrell54.61
- 6 Catherine Bardsley - Donna Setzer54.42

Stratum C, 5.0 Tables

- 1 Tina Brinsfield - Cheri Hayes58.78
- 2 Nancy Ferris - Judith Riggs53.22
- 3 Steven Hundert - Elizabeth Hundert51.89
- 4 Peter Pollak - Judy Ferraro51.83

SAT AFT FLT A/X PAIRS**Stratum A, 15.0 Tables / Based on 42 Tables**

- 1 Helene Bauman - Jim Wakefield66.29
- 2/3 Stan Schenker - David Milton59.66
- 2/3 John Adams - William Cole59.66
- 4 Richard Wegman - David Ruderman58.81
- 5 Dharendra Ghosh - Mark Cohen58.33
- 6/7 Steve Robinson - Peter Boyd57.95
- 6/7 William Hacker - Benjamin Brill57.95

Stratum X, 5.0 Tables

- 1 Dharendra Ghosh - Mark Cohen58.33
- 2 Tanya Rodich - Barack Peled57.58
- 3 James Geist - Ajit Thyagarajan56.44
- 4 Kevin O'Brien - Lynda Flanger46.69

**SAT AFT FLT B/C/D PAIRS****Stratum B, 17.5 Tables**

- 1 Anthony Hawks - Terence McCarthy60.36
- 2 Thomas Reckford - Behnaz Fardshisheh 60.01
- 3 Dale Sanders - David Williams58.97
- 4 Howard Levenson - Melany Levenson 58.59
- 5 Patrice Gordon - Arthur Olson57.74
- 6 Gary Weinberg - Sarah Weinberg57.49

Stratum C, 15.0 Tables

- 1 Anthony Hawks - Terence McCarthy60.36
- 2 Thomas Reckford - Behnaz Fardshisheh 60.01
- 3 Dale Sanders - David Williams58.97
- 4 Howard Levenson - Melany Levenson 58.59
- 5 Patrice Gordon - Arthur Olson57.74
- 6 Gary Weinberg - Sarah Weinberg57.49

Stratum D, 8.5 Tables

- 1 Anthony Hawks - Terence McCarthy60.36
- 2 Dale Sanders - David Williams58.97
- 3 Howard Levenson - Melany Levenson 58.59
- 4 Jim Walsh - David Marshall56.85
- 5 Lynne Groff - Alfred Groff56.55

SAT AFT NLM PAIRS**Stratum A, 9.0 Tables**

- 1 Suzanne Dawson - Rochelle Hilton61.18
- 2 Jeremy Billones - Kathleen LaMarre58.71
- 3 Jean Schoen - Kathleen Zellmer56.46
- 4 Cynthia Harrison - Hanna Wagner56.33
- 5 Thomas Pratt - Nathalie Kaye55.44

Stratum B, 9.0 Tables

- 1 Suzanne Dawson - Rochelle Hilton61.18
- 2 Jeremy Billones - Kathleen LaMarre58.71
- 3 Jean Schoen - Kathleen Zellmer56.46
- 4 Cynthia Harrison - Hanna Wagner56.33
- 5 Thomas Pratt - Nathalie Kaye55.44

Stratum C, 4.0 Tables

- 1 Patsy Henderson - Earl Henderson53.15
- 2 Elizabeth Hundert - Steven Hundert52.30
- 3 Alexander Gretsinger - Jane Dolkart51.79

SUN FLT A/X SWISS**Stratum A, 18 Tables**
/ Based on 49

1/2 Back row, left: Stephen Drodge - John Miller - Noble Shore - Front row, left: Michael Gill, & NPC, Robert Brady98.00

1/2 Back row, right: John Adams - Richard Wegman - Front row, right: Donna Rogall - Clyde Kruskal98.00

- 3 Ann Lindley - Kenneth Davis - Alfred Duncker - Steven Schatzow93.00
- 4 David Milton - William Pettis - Ai-Tai Lo - Stan Schenker84.00
- 5 Steve Robinson - Peter Boyd - William Cole - Mark Shaw82.00

Stratum X, 8 Tables

- 1 Stephen Drodge - John Miller - Noble Shore - Michael Gill98.00
- 2 Jason Meyer - James Geist - Lloyd Rawley - Michael Richey70.00
- 3 Carl Weisman - Judy Weisman - Katherine Rabenstein - Robert Henry69.00

SUN FLT B/C/D SWISS**Stratum B, 24 Tables**

- 1 Michael Girard - Witold Palosz - Barack Peled - Ronald Steinberg, & NPC, Tanya Roddick102.00
- 2 James Beller - Albert Lauber - Jay Cherlow - Hadi Abushakra99.00
- 3 Jerry Miller - Margie Coccodrilli - William Kingery Jr - Janet Dence95.00
- 4/5 Marshall Kramer - Phyllis Sonen - Hilda Getz - Suzanne Floyd85.00
- 4/5 Sylvia Shi - Matthew Lahut - Patrick Frye - Alexander Prairie85.00
- 6 Kevin O'Brien - Lynda Flanger - Francesco Parisi-Presicce - Mike Frosch83.00
- 7 Jeffrey Kosnett - Alice Wegman - John Glynn - Ronald Susi79.00

Stratum C, 10 Tables

- 1 Sylvia Shi - Matthew Lahut - Patrick Frye - Alexander Prairie85.00

- 2 Aaron Navarro - Howard Bender - Susan Klaber - Tobi Bear77.00
 3 Albert Stolpe - Thomas Jennings - Nancy Lea Ross - Andres Doernberg74.00
 4 Wayne Bardsley - Kellen Leister - Paul Setzer - William Glen70.00

Stratum D, 4 Tables

- 1 Wayne Bardsley - Kellen Leister - Paul Setzer - William Glen70.00

SUN MORN NLM SWISS, Stratum A, 7 Tables

- 1 Rochelle Hilton - Jeanne Haji - Yasmin Jiwa - Patricia Mitchell63.00
 2 Margaret Whilden - Thomas Grahame - Hanna Wagner - Maree Webster52.00
 3 Marge Amey - David Amey - Yuen De Anda - Ron Sutter44.00

Stratum B, 4 Tables

- 1 Margaret Whilden - Thomas Grahame - Hanna Wagner - Maree Webster52.00

SUN AFT NLM SWISS, Stratum A, 7 Tables

- 1 Rochelle Hilton - Patricia Mitchell - Yasmin Jiwa - Jeanne Haji63.00
 2 Marge Amey - David Amey - Yuen De Anda - Ron Sutter52.00
 3 Margaret Whilden - Thomas Grahame - Hanna Wagner - Cynthia Harrison42.00

Stratum B, 5 Tables

- 1 Marge Amey - David Amey - Yuen De Anda - Ron Sutter52.00
 2 Margaret Whilden - Thomas Grahame - Hanna Wagner - Cynthia Harrison42.00

Bits & Pieces, cont. from p. 5...

Alexander C Prairie, and Mrs Rhona P Prenskey.

Please join us at our weekly Unit Game on Thursday evenings and frequent the local bridge clubs in the area. Information can be found at www.WashingtonBridgeLeague.org.

2011-2012 WBL/NVBA

PLAYER OF THE YEAR

To be eligible, a player: (1) Must be a member (or pending member) of either the NVBA or the WBL; (2) Must attend at least three WBL and three NVBA sectionals during the contest period (August, 2010 through June, 2011). Points won on Tournament Thursday evenings are included in the totals, but do not count towards eligibility; (3) Must be a member in good standing of the ACBL and a local affiliate throughout the contest period and remain so through the award presentation.

Awards: Two trophies will be awarded.

Standings: Here are the standings after seven of eight sectionals. The asterisk* indicates that the player has met eligibility requirements.

Open Leaders

Player	Points
1 John Adams	144.72
2 Leo LaSota	119.82
3 Steve Robinson	116.30
4 William Cole	112.78 *
5 Stephen Drodge	112.35 *
6 John Miller	98.98 *
7 Mark Shaw	95.14
8 Kenneth Davis	85.87 *
9 Peter Boyd	84.63
10 Helene Bauman	80.54 *
11 David Milton	79.10 *
12 Steven Schatzow	77.90 *
13 Barry Falgout	77.35
14 Stan Schenker	75.28 *
15 James Geist	69.90
16 Donna Rogall	66.27
17 Clyde Kruskal	63.18
18 Robert Hopkins Jr	58.90 *
19 Andrew Gofreed	58.70 *
20 Robert Bell	56.38

NonLM Leaders

Player	Points
1 Thomas Jennings	41.33 *
2 Larry Wallace	31.12 *
3 Alexander Prairie	30.12
4 Daniel Falk	30.06 *
5 Sylvia Shi	28.89
6 Yuen De Anda	25.40 *
7 Ron Sutter	25.40 *
8 Phillip Tseng	23.58 *
9 Ernie Schuler	23.45
10 Paul Setzer	22.41 *
11 Dottie Terrell	20.67 *
12 John McCormick	20.52 *
13 Wayne Bardsley	20.47 *
14 Kellen Leister	20.41 *
15 Georgette Weiss	19.93 *
16 John Gauss	19.87
17 David Montague	18.84
18 Carolyn Baird	18.41 *
19 Thomas Grahame	17.61
20 Glenn Terrell	16.85 *

**SATURDAY
O-NLM GAME
& MINI-LESSON**

Every Saturday, the **Rockville Duplicate Bridge Club** holds a 0 - Non Life Master game with a mini-lesson.

Mini-Lesson: Saturdays, 12:30 pm

O-NLM Game: 1:00 pm

Cost: \$6.00

Location: St. James Episcopal Church
11815 Seven Locks Road

Directions: Take Rt 270 to Exit 4B (from either direction) Montrose Road. This will take you to Seven Locks Road. Left on Seven Locks Rd 3 blocks. St James Church is on the left (going south), between Post Oak and Gainsboro Rd. There are two buildings, the game and mini-lesson are in the building on the left facing the church. There is plenty of parking in the rear, and a rear entrance to the building (1 flight of stairs if you enter from the rear of the building).

For additional information, contact **Mark Lavine**, 301-503-3348 or mlavine@gcsii.com

Open Games: Sat.: 1pm, Mon, Thurs & Fri: 11:15am, Tue: 7pm (Tue only at Rockville Senior Center—see www.rockvilledbc.com for directions.)

**THE WBL
ONLINE**

The Washington Bridge League is providing two new online services:

1. The WBL Online Bulletin Board

On an OPT IN basis only, this service will include an online directory of members. Send any of the following information that you're willing to have posted to the WBL webmaster, Don Berman, at don.berman@verizon.net or call him at 301-776-3581.

Name, Email Address, up to two Phone Numbers, ACBL Number

2. The WBL Online Partnership Desk

Check it out at washingtonbridgeleague.org
Contact Clyde Kruskal at cpkfam@gmail.com or 301-395-0480 with any questions.

**GENE FISHER,
Certified Financial Planner & Tax CPA**

**MAKE MONEY WHILE YOU SLEEP...
CONSERVATIVELY**

Services Provided:

- ♦ *Fixed Fee, Comprehensive Financial Health Checkup, Satisfaction Guaranteed* (Clients have said: "It changed their lives")
- ♦ *Investment management by Nationally acclaimed Registered Investment Advisor*
- ♦ *Advice on how to pay NO current income tax when selling stocks, real estate, etc.*
- ♦ *Retirement planning—Both long and short term*
- ♦ *College Financial Aid—It's Surprising who may qualify, or obtain more aid*
- ♦ *Other techniques to help children/grandchildren reduce the high costs of college*
- ♦ *Estate & Gift Planning—Saving taxes and protecting assets for your loved ones*
Free PowerPoint presentations to groups,
including Investment Training and Saving College Costs

Gene has been listed by Washingtonian Magazine as "1 of 156 People You Can Trust with Your Money" and by Marquis Who's Who In Finance & Industry.

(P) 301-983-1357 ♦ (F) 301-983-5502 ♦ genefi@comcast.net



Paid Advertisement

Paid Advertisement



NLM MASTER POINTERS

by I/N Columnists: Ron Zucker, ron@motherzucker.com
Shawn Stringer, ShStringer@aol.com

MAJOR SUIT RAISES: COMPETITIVE AUCTIONS

Last month, we discussed the preemptive raise to 4M to make it tough for the opponents to get into the bidding. We saw that it was relatively easy to develop guidelines to help decide whether or not to take the leap to the four level. It is more difficult to know if you should bid again when you are in a competitive auction at the two or three level. Your thought process should go like this: Are the opp's trying to "steal" our hand? Do we belong at the three level? Will they double us in 3♥? Can we beat their part score? Can we beat them enough if, in fact, we can make 3?

One tool that is useful in fighting the part score battle is the *Law of Total Tricks* (sometimes simply called the "LAW".) The Law of Total Tricks was introduced in the 1950's and has been discussed and written about extensively. For a thorough study, pick up one of the popular books and read to your heart's content. Our goal, in this limited space, is to get you thinking about the relevant concepts and how they may help your competitive bidding.

In a nutshell, the LAW suggests that the total number of tricks possible in a given hand is roughly equal to the total number of trump held by both sides, each in its respective trump suit. So, if your side has 9 clubs and the opponents have 8 diamonds, then there should be 17 possible tricks in the hand when the hand is played once in clubs and once diamonds. Maybe you can take 9 tricks if you declare and the opponents can take eight if they declare. Or maybe you can take ten tricks and they can take only seven. Note that the LAW tells how many total tricks can be made, but does not guarantee how many

either side can make.

The most important follow-up concept that flows from the Law of Total Tricks is this: when you want to compete for a part score, you are safe at the level roughly equal to your side's number of trump. Does that mean that if you have nine trump you will always make your three level contract? Of course not. Nor does it mean that you cannot compete to a level higher than your number of trump. What it does mean – **from a scoring perspective** – is that you will be relatively safe at that level. It also means that if the opponents can make their two level contract, you should consider competing to the three level if you have a fit of your own. That is because your matchpoint loss is likely to be less than letting them make their contract.

Let's look at a bidding sequence that you probably encounter every time you play and see how our LAW concepts apply. South opens and the bidding goes:

South	East	North	West
1♥	P	2♥	P
P	????		

N-S are stopping in a part score. Should East pass or compete?

Here is how East should be thinking: N/S is in a known eight –card fit. We probably have a fit of our own. N/S have shown roughly half the deck, so we have roughly half the deck as well. If I pass, we will likely score -110 or -140. If I compete, we may be -50 or -100 or we may even be +110, all of which are winning strategies. We may also push them to 3H which they cannot make, and we will be +50 or +100. On the other hand, we may not have a fit. And we may get doubled and go for a minus bigger than their

part score. So, what to do?

When you are at the table and are considering your options, here are some practical hints to guide your decision:

1. Watch the vulnerability – at Matchpoints, -200 is a terrible score. Non-vulnerable, -50 or even -100 is often the winning score.
2. Soft values in opponents' suit suggest passing. ♥Kx or ♥Qxx usually take more tricks on defense than offense. On the other hand, having xx or xxx in their suit suggest making a balancing call.
3. The more distributional your hand, the safer it is to get into the auction. A six card suit is great. A singleton heart makes it almost mandatory that you bid or double.

4. It is easier to balance over their 2♥ if you have four or more spades. If they are bidding spades, getting into the auction is somewhat more risky because there is no suit you can play at the two level.

In summary, try not to let the opponents play at the two level. Use these guidelines and see if you can be more active in competing, either to win the contract or to push the opponents out of their comfort zone. You may get set, but in the long run, your strategy will pay off in spades.

Contact Ron or Shawn if you have any questions.

Next month, we'll start showing how the Law of Total Tricks guides bidding, and suggest a structure for major suit raises you can use!

STEPPING UP TO NEW HEIGHTS: As of May 1, 2012

Junior Masters:

5 Masterpoints

Ms Ivy E Broder
Mr George Joseph
Marcia M Littlejohn
Carol L McGarry
Ms Joy I Oliver
Stanley B Rosen
Wilma F Bonner
Fadi Eidi
Mr Myron L Goldstein
Mr Christopher E Goldthwait
Carl E Hunt Md
David Karsten
Stephanie Karsten
Mrs Jeanne Pejeau
Asefe B Rahnama
Clark Readler
Mr Jonathan Walters
Barbara Yuravlivker
Fran Zamore

Club Masters: 20 MPs

Mrs Catherine S Bardsley
Mahmoud Katirai
Ms Karen K Salem
Mr F Scott Bush
Mr Richard J Kwan
Mrs Jane E Marsh
Mr Johnny M Marsh
Mrs Claudia Rathbone
Warren L Schaaf
Mr Neil M Singer

Sectional Masters: 50 MPs

Lois J Garin
Mrs Sandra C Getler
Mr Terry M Klein
Mr Steven L Leifer
Mr Jim J Walsh
Sarah P Watson
Mrs Rita Z Barr
Mr Michael S Berens
Cheri Hayes

Mr Lawrence D Hollman
Ms Mary E Ourand
Mrs Sally Schlein
Ms Jo Turner

Regional Masters: 100 MPs

Mr Thomas J Grahame
Ms Jo Anna Mencarelli
Mrs Franny Van Dyke
Mr Ted Van Dyke
Mrs Betty Ann McGeehan
Dr Prabhakar Tamboli

NABC Masters: 200 MPs

Lloyd Bowling
Ms Betsy Cox
Mr Alan J Ferraro
Mrs Jeanne E Ferraro
Ms Barbara S Sadick
Mr Bruce Steinwald
Mr Patrick M Frye

WBL SOLVERS' CLUB'S NEW PROBLEMS

1) Matchpoints, None Vulnerable

♠ KQ2♥K54♦AQ108642♣-

SOUTH	WEST	NORTH	EAST
1♦	Pass	1♠	Pass
???			

2) Matchpoints, None Vulnerable

♠ QJ43♥654♦Q2♣AK32

SOUTH	WEST	NORTH	EAST
1♣	Pass	1♠	Pass
2♠	Pass	2NT	Pass
3♥*	Pass	4♣	Pass
???			

* 4 spades minimum hand

3) Matchpoints, None Vulnerable

♠ A♥K54♦32♣AKQJ842

SOUTH	WEST	NORTH	EAST
1♣	Pass	1♥	Pass
???			

4) IMPs, They're Vulnerable

♠ AK32♥-♦AQ10862♣A42

SOUTH	WEST	NORTH	EAST
1♦	1♥	Pass	Pass
Dbl	3♥	Pass	2♥
???		Pass	Pass

5) IMPs, Both Vulnerable

♠ KQ2♥J943♦1065♣742

SOUTH	WEST	NORTH	EAST
Pass	1♥	Dbl	Pass
Pass	3♥*	Dbl	2♥
???			Pass

*Non-invitational

Return answers by June 17 to:

Steve Robinson

2891 S. Abingdon St #A2,
Arlington VA, 22206
robinswr@erols.com

NEED A RIDE OR A PARTNER FOR THE THURSDAY UNIT GAME?

Contact **Barbara Doran** UnitGamePartner@DistrictSix.org, (301-608-0347 between 9am and 10pm) to find a partner in advance. For a last minute partner, call the **WBL cell phone (301-395-2760)**.

Ron Zucker, Carpool Coordinator can be contacted at 202-986-2166 or (ron@moherzucker.com) or log on to the **On-Line Carpool Notices** at www.WashingtonBridgeLeague.org.

Good luck! We look forward to seeing you on Thursday evenings.