

67TH ANNUAL POTOMAC VALLEY TOURNAMENT August 2-5, 2012

***Join us for a summer bridge
holiday in the Potomac Valley!***

at the

KENSINGTON TOWN HALL/ARMORY

3710 Mitchell St., Kensington, MD 20895

(See washingtonbridgeleague.org for parking details)

The 2012 Potomac Valley Tournament features:

- ♣ *a full schedule of **Intermediate & Novice** events*
- ♦ *Friday night **IMP Pairs** where you only need one partner, but it scores like a team game*
- ♥ *the **9th Annual WBL Trophy Pairs** on Saturday with a **Panel Show** between sessions*
- ♠ ***Team games** on Sunday and another fantastic **One-Day Bridge Class** with Shawn Stringer. (See details on p.5.)*



*Plus, throughout the tournament, **Famous Washington Hospitality** including snacks, drinks, and Friday and Sunday lunch free of charge.*

—See page 3 for the full tournament schedule—

*Then, on **SEPTEMBER 22-23, 2012**, it's a*

WASHINGTON BRIDGE LEAGUE

Non Life Master Sectional

*Shawn Stringer is your host for a WBL tournament just for **Non Life Masters!** (...with less than 500 points.) Join in for a fun weekend with lunch and refreshments included both days. Silver points, too!*

See page 4 for the full tournament schedule...

B

♣

U

♥

L

♠

L

♦

E

♥

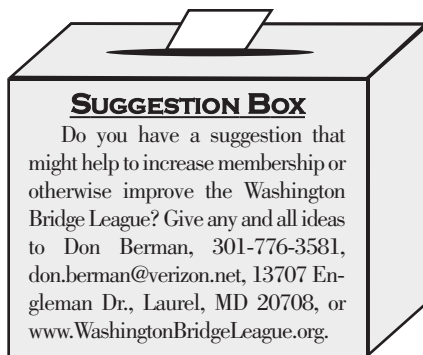
T

♣

I

♠

N



SUGGESTION BOX

Do you have a suggestion that might help to increase membership or otherwise improve the Washington Bridge League? Give any and all ideas to Don Berman, 301-776-3581, don.berman@verizon.net, 13707 Engleman Dr., Laurel, MD 20708, or www.WashingtonBridgeLeague.org.

WBL OMBUDSMAN

Any player with helpful director issues including criticism or praise of the directing staff may contact the Ombudsman, Adrienne Kuehneman and be assured that the source of the information will remain confidential. Information should be provided in writing and may be handed to her at any game, or mailed to her at 6333 Tone Dr., Bethesda, MD 20817-5811.

♣♦♥♠ ~~~~~ ♣♦♥♠

DEADLINE: JULY 31, 2012

TO SUBMIT NEW ARTICLES TO THE EDITOR FOR THE SEPTEMBER/OCTOBER 2012 ISSUE

Washington Bridge League BULLETIN (usps #861-240)

VOL. 70, #4— SUBSCRIPTION \$2 PER YEAR FOR MEMBERS OF UNIT #147 (INCLUDED IN ACBL ANNUAL DUES). NON-MEMBER SUBSCRIPTION RATE IS \$21 FOR THREE YEARS. PUBLISHED BI-MONTHLY BY THE WASHINGTON BRIDGE LEAGUE AT 14517 PERRYWOOD DRIVE, BURTONSVILLE, MD 20866. PERIODICALS POSTAGE PAID AT BURTONSVILLE, MD. POSTMASTER: SEND ADDRESS CHANGES TO WASHINGTON BRIDGE LEAGUE BULLETIN, ACBL, P.O. Box 289, HORN LAKE, MS 38637-0289. ALL EDITORIAL AND GENERAL CORRESPONDENCE SHOULD BE DIRECTED TO THE EDITOR AT 901 CLIFTONBROOK LN., SILVER SPRING, MD 20905-3711.

Editor — Donna Rogall (301-421-9615), drogall@verizon.net

I/N Columnists — Shawn Stringer, shstringer@aol.com and Ron Zucker, ron@motherzucker.com

Columnists — Steve Robinson, Richard Colker, Don Berman, Chris Miller, Barry Bragin

The opinions expressed by our columnists do not necessarily reflect the opinion of the ACBL, the WBL, or even the editors of this publication. The WBL is not responsible for the claims of its advertisers.

Richard Ferrin, *President* — (202-265-0718), rferrin@mac.com

Ellen Cherniavsky, *Vice President* — (301-649-1350), eachernia@yahoo.com

Rose Berman, *Treasurer* — (301-776-3581), Rose.Berman@verizon.net

Linda Marshall, *Secretary* — (301-320-6057), ldajmarshall@msn.com

Don Berman, *Past President* — (301-776-3581), don.berman@verizon.net

UNIT DIRECTORS

Lois Geer — (301-236-0014), geerbridge@verizon.net

James Geist — (301-675-6070), wwwjfg@yahoo.com

Clyde Kruskal — (301-927-1023), cpkfam@gmail.com

Carole Banks — (301-622-0923), cy.banks@verizon.net

Norman Mitchell — (301-762-8383), nmitchell@verizon.net

Ollie Thomas — (301-951-0138), joliver.thomas@verizon.net

SOME KEY VOLUNTEERS

Shawn Stringer — *Regional and NLM Tournament Chair*, (301-275-6363), shstringer@aol.com

Ron Zucker — *Sectional Tournament Chair*, (202-986-2166), ron@motherzucker.com

Adrenne Kuehneman — *WBL Ombudsman* (301-229-2022)

Frances Burke — *Membership Secretary* (301-384-6103)

Chris Miller — *Unit Game Chief Director & Club Manager* (301-318-6083), wblmanager@gmail.com

Clyde Kruskal — *Unit Game Chair* (301-395-0430)

Barbara Doran — *Unit Game & Tournament Partnerships* (301-608-0347)

Kitty Gottfried — *Unit Game and Sectional Hospitality* (301-587-3981)

Vacant — *WBL School Bridge Coordinator*

Barry Bragin — *Unit Recorder* (301-598-6853)

WBL WEBSITE:

www.WashingtonBridgeLeague.org

DISTRICT 6 SITE:

www.districtsix.org

TO GET ON AN EMAIL LIST FOR **BRIDGE NEWS & BRIDGE PROBLEMS**, SEND A NOTE TO STEVE ROBINSON AT **ROBINSWR1941@GMAIL.COM** REQUESTING SUCH.

CONTENTS

ARTICLE	PAGE
President's Letter	by Richard Ferrin 2
New WBL Phone Directory; Opt Out?	2
67th Annual Potomac Valley Tournament — August 2-5, 2012	3
WBL Non Life Master Sectional — September 22-23, 2012	4
Bits and Pieces...	
Welcome to the Washington Bridge League; Next 1-Day Bridge Classes:	
Sunday, Aug 5 & Sunday, Sept 30; 2012 Unit KO Winners; Gold	
Points! Red Points! Green Points! It's the 2012-2013 North	
American Pairs!	5
2011-2012 WBL/NVBA Player of the Year Final Standings;	22
The WBL Online	27
82nd Annual D.C. Championships — September 27-30, 2012	6
WBL Solvers' Club	by Steve Robinson 7
Thursday Night Unit Game...	
2012 Trophy Race Standings	by Webmaster, Don Berman 14
0-20 Game & Lesson Thursday Nights, Carpools	14
Schedule, WBL Cell Phone, Map, Guaranteed Partner Program . . .	15
The Unit Game—2012-2013 NAPs; Spare Brains or Muscle?;	
Upcoming Sectionals	16
Committee Action 77	by Rich Colker 17
NVBA September Sensations Sectional Tournament—Sept 6-9, 2012 . . .	19
NVBA Fall Sectional Tournament—October 25-28, 2012	20
Call for Nominations for the Machlin Trophy for Sportsmanship	23
Board and Member Responsibilities: May 2012 – May 2013	24
Washington Bridge League Member Clubs	26
NLMasterPointers	by I/N columnists, Shawn Stringer & Ron Zucker 28
Stepping Up to New Heights	29
Need a Partner or a Ride to the Unit Game?	back cover
Solvers' Club's New Problems	back cover

PRESIDENT'S LETTER

by WBL President, Richard Ferrin

The WBL is fortunate to have one of the largest and most competitive Unit Games in the country, as well as wonderful sectional events.

In conjunction with the NVBA membership, we help District 6 and the Mid-Atlantic Bridge Conference organize a regional every year in the Washington area, with the WBL taking the lead every other year, as we did with this year's 4th of July regional in Bethesda North. The WBL will host its next sectional August 2-5 at Kensington.

These wonderful events do not appear out of thin air, and although we do hire directors and cad-dies, your entry fees alone are not enough to make these contests possible. In order to provide the hospitality to which we have all become accustomed, a lot of volunteer time and

effort is essential. Currently, we are lucky to have a few volunteers who work very hard, and often sacrifice their opportunity to play themselves so that the tournament runs smoothly, refreshments and snacks are replenished, all bridge players have a partner, etc. This approach worked well for a long time, thanks in part to the efforts of our long-time Tournament Chair, Nadine Wood, but her passing last year means that the WBL has to reassess how it runs its tournaments.

There is a better way. I would like each of you, who enjoy our tournaments so much, to consider contributing a bit of your time at least once a year to help with our unit game or sectional

tournaments. There is plenty to do, from food shopping and preparation, breakdown of tables and chairs at the end of the tournament, helping

to keep the space clean throughout, volunteering a session as a guaranteed partner. A little help by a lot of bridge players will help relieve the herculean efforts that a few now provide. Don't know who to approach to volunteer? Ask me if you see me at the Unit Game, or by e-mail (I can be reached at rferrin@mac.com). Ask any WBL Board member.

Ask Ron Zucker, our new Tournament Chair, or Kitty Gottfried, our Director of Hospitality. Ask Barbara Doran, our Partnership Chair. Join our efforts to help run these tournaments.

On another note, Hank Meyer has stepped down from the WBL Board, as he is now a full-time ACBL director. We thank Hank for his service on the Board and his valuable contribution to bridge in the Washington area. We are also fortunate that Carole Banks has agreed to take Hank's place on the Board for the remainder of his term. Carole previously served on the Board and her enthusiasm and good judgement will be a welcome addition to the Board.

Every year we honor one of our members with the **Machlin Trophy for Sportsmanship**. If you know someone who qualifies (see p.23 for details), please send your suggestion (with reasons) to rferrin@mac.com or give it to any committee member at the unit game or at the August Sectional.

NEW WBL PHONE DIRECTORY

The WBL will be issuing an updated Phone Directory. The contents are based on the information the ACBL supplies to us. Please make sure the ACBL has your correct information. If you have any recent corrections please send them to both the ACBL and Don Berman (don.berman@verizon.net). A print-out will be available at the unit game to check your current listing.

OPT OUT?

If you'd like to stop receiving the printed version of the *WBL Bulletin*, please send your e-mail address to Don Berman:

don.berman@verizon.net

You will start receiving an e-mail link to the on-line version of the bulletin in lieu of your printed copy.

AUGUST 2-5, 2012

Take a
Holiday
Potomac

Summer
in the
Valley!



at the

KENSINGTON TOWN HALL/ARMORY

3710 Mitchell St, Kensington, MD ~ (except where noted)

THURSDAY, AUGUST 2

- ♣ Stratified Open Pairs (unlim/1500/500) 11:15am
Rockville Duplicate Bridge Club, 301-503-3348 (Mark Lavine) **NO ENTRY TILL 11AM**
St. James Episcopal Church, 11815 Seven Locks Rd., Rockville
- ♦ StrataFlighted Open Pairs (A/X unlim/3000, B/C/D Separate 2000/1000/500) (both sites); Stratified NLM Pairs (NLM/100/50) & 0-20 Pairs (Kensington Armory only); Stratified 199er Pairs (Beth El only)
Beth El Congregation, 3830 Seminary Rd, Alexandria 7:00pm
Kensington Town Hall/Armory 7:30pm

FRIDAY, AUGUST 3

- ♣ *StrataFlighted A/X (unlim/3000) & B/C/D Pairs (2000/1000/500) 10:00am, 2:00pm
- ♦ **IMP Pairs** A/X (unlim/3000) **7:15pm** ← **EARLIER START!**
It's the Friday night IMPs! With only one partner, it scores like a team game. To get your IMP score on a board, we take your result and IMP it against each result at the other tables, then get the average.
- ♥ B/C/D Pairs (2000/1000/500) **7:15pm**
- ♠ Intermediate/Novice Pairs (300/200/100/50/20) (single sessions) 10:00am, 2:00pm, **7:15pm**
(will run if we have 3 or more tables)

SATURDAY, AUGUST 4

- ♣ **9th Annual: Washington Bridge League Trophy Pairs** 11:00am & 4:00pm
Two session Open Pairs, qualifying and final. Single session entries available.
- ♦ StrataFlighted B/C/D Pairs (2000/1000/500) (single sessions) 11:00am, 4:00pm
- ♥ StrataFlighted A/X Pairs (unlim/3000) 4:00pm
- ♠ Intermediate/Novice Pairs (300/200/100) or Newcomer Pairs (50/20/5) (single sessions) 11:00am, 4:00pm
~ Don't miss the between sessions **Panel Show** ~

SUNDAY, AUGUST 5

- ♣ **1-Day Bridge Class: Advance Your Game** 10:30am
- ♦ A/X Board-A-Match Teams, (unlim/5000, 2 session playthru w/short break) 11:00am & TBA
- ♥ B/C/D Swiss Teams, VPs (2500/1000/500, 7 round playthru w/short break) 11:00am & TBA
- ♠ 300/100/50 Swiss Teams, VPs (single sessions) 11:00am, 3:00pm

♣ **Lots of Intermediate & Novice Events with Silver Points!** ♥

I/N events: 0-5, 20, 50, 100, 200, 300; Stratification at Director's Discretion.

Famous Washington Hospitality includes snacks, drinks, and **Friday and Sunday lunch** free of charge. **Chair: Ron Zucker**, 202-390-3443, ron@motherzucker.com. **Volunteer Coordinator: Barbara Summers**, 301-598-5838, jimbarb1184@aol.com **Hospitality: Kitty Gottfried**, 301-587-3981, kgottfried@hotmail.com **Partnerships: Barbara Doran**, 301-608-0347, SectionalPartner@DistrictSix.org
*StrataFlighted if attendance warrants—otherwise combined into Stratified Pairs (unlim/2000/500)

Directions to the Kensington Town Hall/Armory: 495 Beltway Exit 33, Connecticut Avenue North (Rt. 185N—to Kensington). 1.5 miles, right at light—Knowles Ave. 1st right at stop—Armory Ave. 1st left at stop—to 3710 Mitchell St. & parking lot on right. Additional parking in nearby lots—see website maps.

KENSINGTON, MD: SEPTEMBER 22-23, 2012



Non Life Master Sectional

NEWPORT MILL MIDDLE SCHOOL

11311 Newport Mill Road
Kensington, MD 20895

Play for Silver

NLMs with fewer than
500 MPs

Maryland Hospitality

Lunch and refreshments
included both days!

Saturday, September 22

NLM Stratified Pairs (500/200/100 and 50/20/10)11:00 am

NLM Stratified Pairs (500/200/100 and 50/20/10)3:15 pm

Sunday, September 23 (All day playthrough with lunch break)

Stratified Swiss Teams (500/200/100)11:00 am

-Join us for a fun weekend!-

TOURNAMENT CHAIR

Shawn Stringer

301-275-6363

shstringer@aol.com

DIRECTIONS: From I-495 (Washington Beltway) take Exit 33 (Connecticut Ave/MD-185) North towards Kensington. Go 2 miles and keep Left as Connecticut Ave splits. After the split, take the third Right onto Lawrence Avenue. Take the first Left onto Newport Mill Road. The school is one-half mile on the Right.

BITS AND PIECES

WELCOME TO THE WASHINGTON BRIDGE LEAGUE

The WBL welcomes the following new ACBL members: **Ms Nancy Caplan, Mr Khalid P, Mr Michael L Cooperman, Mr Eric Hagen, Long H Mao, Mr William L Morrow, and Pat Neustadt.**

In addition, we welcome the following transfers from other units: **Robert D Abbo, Mr Thomas W Conley, Mrs Diana B Friedman, Mr Bob Kerchner, Ms Christina Papanikolas, and Mr Michael Stoller.**

Please join us at our weekly Unit Game on Thursday evenings and frequent the local bridge clubs in the area. Information can be found at www.WashingtonBridgeLeague.org.

NEXT 1-DAY BRIDGE CLASSES: SUNDAY, AUGUST 5 & SUNDAY, SEPTEMBER 30

We will hold our next **One Day Bridge Classes** on Sunday, August 5, 2012, as part of the WBL Sectional. Come join us as we continue to explore *Declarer Play* topics. During the following class on Sunday, Sep-

tember 30, we'll start on *Defensive Play* topics. The cost is \$30, which includes materials and lunch. Please contact Shawn Stringer at shstringer@aol.com or 301-275-6363 with any questions or to reserve a space.

2012 UNIT KO WINNERS

Congratulations to this year's Unit KO Winners!

Flight A: Donna Rogall, Clyde Kruskal, Marty Graf, John Adams

Flight B: Michael Berard, Murat Berk, Peter Van Zijl, Richard Wissing

Flight 0-300: David Marshall, Julie Connor, Michael Kuehl, Jim Walsh

GOLD POINTS! RED POINTS! GREEN POINTS! IT'S THE 2012- 2013 NORTH AMERICAN PAIRS!

It's past time to start thinking about the **North American Pairs!** The North American

...continued on p. 21

Dedicated to
excellence in
client service.



JOHN BARKANIC



BARBARA AMES

Tax & Business Services Available:

- Income Tax Return Preparation
- Estate & Trust Administration
- Business Profitability Enhancement
- Estate Tax Return Preparation
- Planning for Retirement Plan Setup & Distributions
- Buying & Selling Business Consulting
- IRS Audits and Negotiations
- Divorce Tax Issues/Planning
- Nonprofit Organization Accounting & Income Taxes
- Quickbooks Setup & Consulting

OUR PROFESSIONAL
TEAM OF
CERTIFIED PUBLIC
ACCOUNTANTS
IN ROCKVILLE
CAN ASSIST YOU
WITH A WIDE RANGE
OF ACCOUNTING
AND TAX SERVICES.

BARKANIC & AMES L.L.C.

CERTIFIED PUBLIC ACCOUNTANTS

CPA

15825 Shady Grove Road, Suite 130
Rockville, MD 20850
301-330-6664 • 301-330-6860 Fax • www.fbacpa.com

SEPTEMBER 27-30, 2012



82nd Annual D.C. CHAMPIONSHIPS

at the
KENSINGTON TOWN HALL/ARMORY
3710 Mitchell St, Kensington, MD ~ (except where noted)

It's Tricks
and
Treats
for all!

THURSDAY, SEPTEMBER 27

- ♣ Stratified Open Pairs (unlim/1500/500) 11:15am
Rockville Duplicate Bridge Club, 301-503-3348 (Mark Lavine)
St. James Episcopal Church, 11815 Seven Locks Rd., Rockville **NO ENTRY TILL 11AM**
- ♦ StrataFlighted Open Pairs (A/X unlim/3000, B/C/D Separate 2000/1000/500) (both sites); Stratified NLM Pairs (NLM/100/50) & 0-20 Pairs (Kensington Armory only); Stratified 199er Pairs (Beth El only)
Beth El Congregation, 3830 Seminary Rd, Alexandria 7:00pm
Kensington Town Hall/Armory 7:30pm

FRIDAY, SEPTEMBER 28

- ♣ *StrataFlighted A/X (unlim/3000) & B/C/D Pairs (2000/1000/500) 10:00am, 2:00pm
- ♦ **IMP Pairs** A/X (unlim/3000) 7:15pm **← EARLIER START!**
It's the Friday night IMPs! With only one partner, it scores like a team game. To get your IMP score on a board, we take your result and IMP it against each result at the other tables, then get the average.
- ♥ B/C/D Pairs (2000/1000/500) 7:15pm
- ♠ Intermediate/Novice Pairs (300/200/100/50/20) (single sessions) 10:00am, 2:00pm, 7:15pm
(will run if we have 3 or more tables)

SATURDAY, SEPTEMBER 29

- ♣ StrataFlighted A/X (unlim/3000) or B/C/D Pairs (2000/1000/500) (single sessions) 11:00am, 4:00pm
- ♦ Intermediate/Novice Pairs (300/200/100) or Newcomer Pairs (50/20/5) (single sessions) 11:00am, 4:00pm
- ♥ **Machlin Sportsmanship Award** Presentation & **Panel Show** between sessions

♠ Eynon Trophy



First awarded in 1931—Try to add your name to the famous names inscribed here!

- A/X Swiss Teams, VPs (unlim /5000, 7 round playthru w/short break) 11:00am & TBA
- ♣ **1-Day Bridge Class: Advance Your Game** 10:30am
- ♦ B/C/D Swiss Teams, VPs (2500/1000/500, 7 round playthru w/short break) 11:00am & TBA
- ♥ 300/100/50 Swiss Teams, VPs (single sessions) 11:00am, 3:00pm

♣ Lots of Intermediate & Novice Events with Silver Points! ♥

L/N events: 0-5, 20, 50, 100, 200, 300; Stratification at Director's Discretion.

Famous Washington Hospitality includes snacks, drinks, & Friday & Sunday lunch free of charge. Chair: **Ron Zucker**, 202-390-3443, ron@motherzucker.com. Volunteer Coordinator:

Barbara Summers, 301-598-5838, jimbarb1184@aol.com Hospitality: **Kitty Gottfried**, 301-587-3981, kgottfried@hotmail.com Partnerships: **Barbara Doran**, 301-608-0347, SectionalPartner@DistrictSix.org

*StrataFlighted if attendance warrants—otherwise combined into Stratified Pairs (unlim/2000/500)

Directions to the Kensington Town Hall/Armory: 495 Beltway Exit 33, Connecticut Avenue North (Rt. 185N—to Kensington). 1.5 miles, right at light—Knowles Ave. 1st right at stop—Armory Ave. 1st left at stop—to 3710 Mitchell St. & parking lot on right. Additional parking in nearby lots—see website maps.

WBL SOLVERS' CLUB

Moderated by Steve Robinson

robinswr@erols.com

Congratulations to **Stephen Drodge, Robert Stone** and **Manuel Paulo** who tied for first with a score of 490. They win a free entry to the Unit Game, and will be invited to be on a future panel. Tied for fourth were **Al Duncker, Steve MacArthur, Bob Henry** and **Yi Zhong** with a score of 480. Tied for eighth were **Wes Gray, Gene Fisher, Mark Rosen, Mark Chen, Arnie Frankel** and **Darwin Afdahl** with a score of 470. Tied for fourteenth were **Walter Taschek, James Stormes, Wes Goldberg, Mike Richey, Donna Rogall, Noble Shore** and **Mike Kovacich** with a score of 460. Tied for twenty-first were **Marvin Elster, Jeffrey Klemm, Jerry Miller, David Naftaly, Enid Hughes, Lloyd Rawley, Gareth Birdsall, Jeff Hepner**, and **Paul McMullin** were with a score of 450. Tied for thirtieth were **Michael Ford, Hank Strauch, Marlys Moholt, Jay Weinstein, Bruce Kretchmer, Tony Graziano, Joav Steinbach, Oleg Dolgikh, Brad Theurer, Paul Setzer, Prahalad Rajkumar, Steve Chaplin, Leon Letwin, Mike Gill** and **Bruce Waugh** with a score of 440. The average score of the 197 solvers was 381. The average score of the experts was 423.

All readers are encouraged to send answers and/or new problems to Steve Robinson, 2891 S. Abingdon St. #A2 Arlington, VA, 22206-1329. In addition to the winner receiving a free play at the WBL Unit Game, Steve will play with anyone who gets a perfect score or who exactly matches all five of his answers. If you send a self-addressed stamped envelope to the above address along with your answers, I will send you a copy of the new problems to ensure that you can meet his next deadline. You can pick up a copy of the problems at the WBL Unit Game in Maryland, and can send answers or requests for problems to robinswr@erols.com. You can also see and answer the problems at the WBL web site. WBL Solvers Club uses *Washington Standard* as published July 1996. I accept only the first answer from each solver unless it is clear that the solver wants to correct his answer.

I personally score all the problems. If a majority of the solvers vote for an answer, and the

answer is reasonable I will give that answer 100 points. I will not give 100 points to an answer that I consider bad no matter how many experts vote for it. There are times when I want to make a point. I will give that answer 100 points and will therefore give the majority answer 90 points. For the other answers I consider how good the answer is and how many experts vote for it for its score. If you submitted an answer that got 20 points, that bid would get a bad score at the table. A good exercise would be to figure out why I gave your answer 20 points. You might have misread the problem.

The book *Washington Standard* second edition is out. If you are a serious bridge player, this book is a must. You can purchase a copy from Steve for \$25.00 whenever you see him or can send him a check for \$30.15 that includes \$5.15 for priority mail.

1) Matchpoints, None Vulnerable

♠KQ2♥K54♦AQ108642♣-

SOUTH	WEST	NORTH	EAST
1♦	Pass	1♠	Pass
???			
Action	Score	Votes	Solvers
2♥	100	7	43
3♦	90	3	99
3♠	50	0	4
4♣	40	0	9
2♦	40	0	14
4♠	40	0	1
4♦	30	0	5
2♠	30	1	13
3♣	30	0	5
1NT	30	0	2
5♣	20	0	1
5♦	20	0	1

There are three possible choices here. You can jump to 3♦ showing at least 15 HCP and a good six-card diamond suit. 3♦ is non-forcing, so you might not want to jump to 3♦ with a game-forcing hand. You could make up a reverse

planning on later showing your three-card spade support. The third option is to put a diamond (normally you'd put a club in there) in with your spades and show four-card spade support.

Seven experts reverse in hearts. There are many dangers reversing into a three-card or shorter suit. If partner has ♠Jxxxx♥Qxx♦x♣xxx, you could find yourself playing in 2♥. Some players pass forcing bids if they don't have their initial response. The second danger is that partner could have ♠Jxxxx♥QJxx♦x♣xxx and jump to 4♥. How is partner going to interpret your 4♠ bid? Since he showed four-card heart support, he must have five spades and you will have an eight-card spade fit. If partner does not have four hearts, you'll survive your three-card 2♥-bid. Your next action will be to show your three-card spade support. The third danger is that by bidding hearts then spades, partner will not know that you have seven diamonds and a void in clubs. The fourth danger is that if partner has a weak hand, you'll get too high.

Parker: "2♥—I want to force for one round and get partner to either show a fifth spade, Diamond support or bid 2NT which would show none of the above. This assumes that 2NT is not a form of Lebensohl."

In Washington Standard, Responder can bid 2NT over 2♥ if he wants to sign-off in either diamonds or hearts. A direct 3♦ or 3♥ is game-forcing. 2NT is a form of Lebensohl.

Elster: "2♥—Need to find out more in order to explore possible slam. 2♥ sets up a forcing auction. If partner raises hearts or rebids spades, then he has at least five spades; over his 2NT I'll bid 3♠ and over his 3NT I'll then show my diamonds."

I admit that when you support spades, Responder should take your heart bid with a grain of salt.

Zucker: "2♥—In playing strength, this hand is worth a reverse. If partner raises hearts, he has at least five spades. If partner bids 2NT (preparatory to a sign off), I'll bid 3♠ over 3♥ or 3♦. There's just no number of diamonds I like, and I generally think it's better to be in the right strain at the wrong level than the wrong strain at the right level. My greatest fear is that after 2♥ - 3♥ - 3♠ - 4♥, partner might think 4♠ is kickback, but I think most partners are aware that this is a possibility."

Schwartz: "2♥—Close between 2♥ and 3♦ but 2♥ makes it easier to get to spades when it's right and to avoid 3NT over a 3♦ rebid when partner has a stiff diamond."

King: "2♥—I want to know if partner has five spades and this is the way to force and find out what we want to know."

Adams: "2♥—With my partners other than Bill Cole, I can bid 2♣ as artificial force, but that is not Washington Standard. The 2♥ reverse has mild risk, if partner passes a 100% forcing bid, but otherwise I can return safely to Spades if partner raises Hearts. This is a common problem, and this is the standard solution for those not playing 2♣ artificial. 2♥ is not only forcing, but it promises a rebid."

Landen: "2♥—Massive playing strength easily justify reversing. I will support spades if partner doesn't show primary diamond support."

Three experts join me and do not stomach reversing into a three-card suit. Two experts join me and bid what they have. 3♦ shows a good hand with at least six diamonds. We hope that if partner passes 3♦, he has only four spades. If partner bids again, we will get to show our three-card spade support. Partner will know a lot about the hand. The reversers will probably only get to show their three-card spade support

Woolsey: "3♦—Least of evils I believe. I never reverse into a three-card suit, and any number of spades is distorted. This hand is another version of the Bridge World nightmare hand which keeps coming up in the Bridge World master solvers problems — an intermediate strength opening bid with a long minor and often three-card support for partner's major. Some solutions are: Play a strong club system. Play Cole, where 2♣ rebid is artificial. Play transfer rebids, which are feasible if 1♦ is unbalanced since there is no need for a natural 1NT rebid. I have used all of these methods in different partnerships, and they all work better than Standard for this type of hand."

Hopkins: "3♦—This one is impossible. If partner moves on, I expect to get my Spade support in. If not, I should have a chance at going plus although it might not be as good a score as those who strike a five-card Spade suit in partner's hand and score up a partial there."

One expert raises spades. In lots of partnerships, you're allowed to raise on three-

card support. However, 2♠ shows 11-14 and this hand is much stronger.

Cappelletti: "2♠—A slight underbid but ok for matchpoints."

Avoid bidding three-card majors as often as possible.

2) Matchpoints, None Vulnerable

♠QJ43♥654♦Q2♣AK32

SOUTH	WEST	NORTH	EAST
1♣	Pass	1♠	Pass
2♠	Pass	2NT	Pass
3♥*	Pass	4♣	Pass
????	* four spades minimum hand		

Action	Score	Votes	Solvers
4♦	100	3	8
4♥	90	0	5
5♣	90	3	22
4NT	90	1	5
6♠	80	0	1
4♠	70	4	144
Pass	20	0	12

2NT is forcing since after partner's raise, since you can't logically want to play in 2NT. Partner has either four spades and you have an eight-card spade fit or he has only three spades and some distribution. Either way, partner should never pass 2NT. Here you're playing that over 2NT, Opener bids 3♣ to show a minimum opener with only three spades. Opener bids 3♦ to show a maximum 2♠ raise with only three spades. Opener bids 3♥ to show a minimum opener with four spades. Opener bids higher than 3♥ to show a maximum 2♠-raise with four spades. I call it 3344. You can also use the same logic after one-of-a-minor - 1♥ - 2♥ where either 2♠ or 2NT asks opener how many hearts he has and how strong he is.

You have shown a minimum hand with four-card spade support. Partner knows that you have a minimum hand. In spite of that partner is making a slam try. 4♣ is a natural club-help-suit-slam try. If 4♣ can be a void, you won't know what your king of clubs is worth. Opposite a void the king is worth nothing. Opposite club length the king is worth a lot. The question is - do you have a good minimum hand with four spades, an average minimum hand with four spades or do you have a bad minimum hand with four spades. You have three keycards

where you could have none. Here I count the Ace-king of clubs as two keycards. Partner could have ♠AKxx♥xx♦A♣Jxxxx and 6♠ is practically cold. I think this is a great minimum hand with four spades. On the other hand you could have had zero keycards — ♠10xxx♥AKQ♦Jxx♣Qxx for instance and 4♠ can be set.

Three experts raise partner's support bid. The problem with 5♣ is that partner can no longer bid keycard.

Cappelletti: "5♣—Whatever partner is doing. He's probably 5-5 or longer in the black suits."

Parker: "5♣—I assume his 4♣ bid is based on shape, five-five or better. I could bid 4♦ The Last Train but that might be construed as a cue bid. I raised spades, showed a minimum but have great clubs, so I will show them and deny red suit stoppers."

If hearts were trump then 4♦ would be the Last Train but here there are two bids between 4♣ and 4♠.

Zucker: "5♣—What is my devious partner up to? Is partner cuebidding a void in my first bid suit? I don't think so. If partner has both red aces and values in clubs, though, he would know it's probably fruitless to cuebid a red ace. I can't possibly have one to cuebid. I can't realistically bid Blackwood, since I wouldn't know what to do if we're missing one. Partner has made a slam try knowing we're on a minimum. It seems to me that the least I can do is tell partner where more than half my hand is, especially when it's an ace and a king instead of scattered nebulous values."

Two experts join me and cuebid their queen of diamonds. Bidding anything other than 4♠ says that you like your minimum hand. If I had to choose the final contract, I would jump to 6♠. Bidding 4♦ allows partner to bid RKC and you can then show your keycards. This hand is so good that I'd continue if partner signs off over my 4♦ bid. Since he's off the ♣AK, he has to have the red suits under control.

Woolsey: "4♦—In the context of a minimum hand this hand is okay — good trumps and an ace-king. Hence I shouldn't bid 4♠, which would show the absolute worst. This will be my last nudge — if partner makes a last train 4♥ call I will sign off. It doesn't matter that I don't have a diamond control. If partner drives to slam over 4♦ missing QJ of spades and AK of clubs,

you can bet that he has a diamond control.”

King: “4♦—I have shown four spades and a minimum and partner still is looking for a slam.”

One expert likes his three keycards so much that he’s willing to force to slam unless two keycards are missing.

Adams: “4NT—Robinson plays 4♣ as a help suit slam try, and I have what he needs. I got this hand wrong at the table a couple years ago. Playing with anyone else, I’d sign off, but in this column I assume Steve is my partner. Interestingly I had a hand with a club void recently and temporized with a non-serious 3NT to avoid this issue.”

Four experts don’t know the value of keycards.

Schwartz: “4♠—Whether 4♣ means clubs or cue bid, I can’t imagine another bid.”

Elster: “4♠—Nothing to cue bid in the red suits, where my fast losers keep me from wanting to go to the five-level unless partner makes another push.”

Landen: “4♠—Minimum hand. I’m not bidding to the five-level without a red suit control. Not sure how partner means 4♣, but I’m done.”

Hopkins: “4♠—I am glad my Club and Spade cards are useful so we should have a good chance at game after partner’s slam try.”

When you’ve shown a minimum, your next decision should be whether it’s a good minimum, a fair minimum or a bad minimum.

3) Matchpoints, None Vulnerable

♠A♥K54♦32♠AKQJ842

SOUTH	WEST	NORTH	EAST
1♣	Pass	1♥	Pass
????			
Action	Score	Votes	Solvers
2♦	100	7	41
3♣	90	2	66
2NT	80	1	5
3NT	60	0	24
4♣	40	0	19
4♥	40	0	7
3♥	40	0	3
3♠	40	0	10
4NT	30	0	5
5♣	30	0	7
2♠	20	0	7
1♠	20	0	2
3♦	20	1	1

How do you show a game-forcing club hand with three-card heart support for partner? One way is to make a forcing bid below partner’s suit. 2♦, which is a reverse, is forcing for one round and promises a rebid. After partner makes his rebid, you then support hearts. Just like problem one, there are many dangers bidding a non-four-card suit. If you’re playing Walsh partner responds 1♥ holding ♠xx♥Qxxx♦AQ9xxx♣x. Partner will take you back to diamonds. If you’re playing Washington Standard, you respond 1♦ when your diamonds are much better than your hearts. When close you respond 1♥. I’d respond 1♥ holding ♠xxx♥Qxxx♦AKxx♣xx.

Seven experts reverse, this time into a two-card suit. The danger about reversing into an imaginary suit which is higher than your suit is that partner might not let you out. Another problem is that it doesn’t show that you have seven solid clubs and three good hearts. Not sure where they will end up if Responder has ♠xx♥Qxxx♦AQ9xxx♣x. At least no expert jump shifted into 2♠. That would be a disaster if Responder had four spades.

Parker: “2♦—Similar to problem number one above. I can force and see what he bids. I can bid hearts over anything he bids and hopefully get a diamond cue bid out of him. I don’t want to bid 2♠ because we will get too high. If he bids 2♥ I can bid 3♠ which is a splinter.”

In problem one, you were protected since if Responder has four hearts, he must have five spades. Here you have no protection.

Elster: “2♦—Like problem one above, I need to find out more about partner’s hand, especially his hearts, while ensuring that the auction doesn’t suffer from a premature ending.”

If I held ♠xxxx♥Qxxxx♦Jxx♣x, you’d be playing in 2♦. I’ve seen reverses passed when Responder doesn’t have his response.

Zucker: “2♦—I bid this fully expecting to have to be polite when I see partner wander over to the partnership desk after the session. See problem one for my reasoning. I hate doing this. But I have a four loser hand. Yeah, it’s a perfecto, but partner is pretty much gin for 6♥ on as little as ♠Jxxx♥AQJx♦Kxx♣xx. I can’t splinter with an ace and only three-card support, and 3NT gets us to 3NT whether it’s right or wrong, as partner won’t move with a lot of hands, including five hearts to the AQ and the

diamond king where 6♥ is good but 3NT can go down. Meanwhile, I can handle any response from partner. Over 2♠ (presumably Lebehnsohl-ish), 2NT (forcing), 3♣ (forcing) or 2♥, I’ll bid 3♥. Over 2♥, I’ll establish trumps and a game force with 3♥, or, if 3♥ is not forcing in Washington Standard, 2♠, then follow with 3♥. I think 4♣ is my second choice, lying about my trump length, but I don’t want partner, holding Axxx and finding out I have the heart king via kickback thinking we have only one heart loser.”

Schwartz: “2♦—Certainly the hand is worth a game force, and maybe it will help me avoid a diamond lead. When I rebid clubs, partner should be aware I can have a one-suiter.”

But at what level will you have to rebid clubs?

King: “2♦—Again I want to find out if partner has five hearts. Here there is more danger that partner may raise diamonds and I will have a harder time extricating myself, but I would take that chance.”

Landen: “2♦—I must force to game, but which game? I won’t guess to bid 3NT, so will try to get partner to contribute some information. If 2♦ gets raised, I’ll bid 3NT.”

Hopkins: “2♦—Ugh. I hope partner rebids Hearts or raises Diamonds so we can pick the best place to play.”

Three experts join me and do not reverse into diamonds. One expert bids 2NT. Does this hand really look like 18-19 balanced? At least he won’t be playing in diamonds.

Woolsey: “2NT—Another Bridge World Nightmare hand. If partner has five hearts, he can check back to get us to 4♥. I’ll gamble on either partner having a diamond stopper or the opponents leading a spade. Anything else looks like it will lead to a complete disaster.”

One expert joins me and jumps in clubs. If you belong in 6♣, 3♣ is the bid to get you there. If partner does not pass 3♣, you should get to the best spot.

Adams: “3♣—This time, I can’t reverse into diamonds. Partner can raise diamonds without having five hearts. 3NT is tempting, but makes it really hard to get back to hearts. 3♣ is an underbid, but its matchpoints and I hope for another chance. This is the sort of hand that makes playing transfer bids over

1♣ very attractive.”

The following is a simple description of how transfer responses work. Suppose the auction starts out 1♣ — 1♦ which shows hearts. If Opener has four hearts, he makes the same bid as if the auction went 1♣ - 1♥. Over the transfer 1♦-bid, you can play 1♥ as a multi-way forcing bid. Partner then bids 1♠ to ask you why you bid 1♥. You now have many extra bids to show various three-card heart raises. You can also show various game-forcing club bids. Playing transfer responses, here’s how the problem auction would go — 1♣ - 1♦ (transfer to hearts) - 1♥ (relay) - 1♠ (relay) - 2♦. 2♦ shows exactly three hearts, at least five clubs and more than 17 points. Isn’t science great?

The following expert has not read my book. In Washington Standard, 3♦ is a splinter in support of hearts. It shows four hearts, diamond shortness and enough to bid at least 3♥. If 3♦ was natural, jump shifting into a higher non-existent suit could lead to disaster when partner keeps supporting your non-existent suit.

Cappelletti: “3♦—Must jump shift. Not quite right for 3NT and too good for 3♣.”

Bidding short suits can lead to disaster.

4) IMPs, They’re Vulnerable

♠AK32♥-♦AQ10862♣A42

SOUTH	WEST	NORTH	EAST
1♦	1♥	Pass	Pass
Dbl	3♥	Pass	Pass
????			
Action	Score	Votes	Solvers
3♠	100	3	16
4♦	90	3	40
Dbl	90	5	91
Pass	40	0	39
5♦	40	0	5
3NT	30	0	1
6♦	30	0	1
4♥	30	0	3
4♣	20	0	1

You doubled 2♥ for takeout. Did your double of 2♥ show THIS hand? When you have a void, especially one in the opponent’s suit, you should bid one more than the hand calls for. Therefore passing is out of the question. Double could be right but if partner has nothing, he

might pass and then we would be at the mercy of the opponent's distribution. Bidding 3♠ shows this hand. Exactly four spades, since with five you would have bid them earlier. A void in hearts since you didn't double 3♥. And at least five diamonds. Partner should think that you are either 4=0=6=3 or 4=0=5=4. The other choice, 4♦, shows long diamonds but does not differentiate whether you have three or four spades. If partner has ♠xxxx♥xxx♦Jxx♣Qxx, he might not take you back to spades.

Three experts bid 4♦. Bidding 4♦ could cause you to miss your eight-card spade fit. While bidding 3♠ will not cause you to miss your diamond or club fit.

Parker: "4♦—If I bid 3♠, partner will not know with three spades and two diamonds to go back to Diamonds. I can double but partner may be forced to pass with some 3=4=3=3 bad hand. I have inferred the other suits with my double. A double of 3♥ by partner should be penalty in this sequence saying he would have passed 2♥ doubled."

If you bid 3♠, and partner has only three spades, he knows that you do not belong in spades. He should take you to four-of-the-obvious-minor. Partner should not let you play in spades unless he has at least four of them.

Hopkins: "4♦—I am expecting partner to be something like a 3-3-3-4 pattern with minimal values so I am going to give it just one more shot."

Elster: "4♦—Pass, double again, bid 3♠, bid 4♦? Second choice is to double again. I need so little to make game in diamonds."

Two experts join me and bid 3♠. They do not want to double 3♥ with a void. Partner might pass thinking that passing is the least of evils.

Woolsey: "3♠—I'm not doubling again, as there is too much chance that partner will sit and be wrong. This pretty much describes my exact shape, so if we do have a decent home partner should be able to find it."

Schwartz: "3♠—Probably shows this shape and at this vulnerability, willing to believe the opponents that they are not going for a number if I double again."

Five experts double. What is partner supposed to do if he holds ♠xxx♥xxx♦xxx♣Qxxx? If I held that hand, I'd pass the double.

Zucker: "Double—This is a cognate of hand five. Given that I'm willing for partner to pass

with my hand from problem five (obviously, since I have the Spade King, reversing partner's clubs and spades from problem five, i.e., ♠742♥J943♦1065♣KQ2), I am willing to double here. 4♦ would be great if I thought I would be playing it, but I think I'm in 5♦ when partner has a tiny something and three baby diamonds with nowhere to put my losers."

King: "Double—I think I have too much to pass. Partner can bid a four-card spade suit, pass or support diamonds and I will be happy. If he bids Clubs I will correct to diamonds."

Adams: "Double—Not giving up yet. Partner knows I am likely void at this point and will not leave it without good reason."

Landen: "Double—One more push, partner must have 13 cards."

Cappelletti: "Double—Worth another try so must double."

Try not to make takeout doubles when you're void in the opponent's suit.

5) IMPs, Both Vulnerable

♠KQ2♥J943♦1065♣742

<u>SOUTH</u>	<u>WEST</u>	<u>NORTH</u>	<u>EAST</u>
Pass	1♥	Dbl	2♥
Pass	3♥*	Dbl	Pass
????	*Non-invitational		
<u>Action</u>	<u>Score</u>	<u>Votes</u>	<u>Solvers</u>
3♠	100	5	70
Pass	90	5	98
4♥	80	1	5
4♠	50	0	4
3NT	50	0	20

Partner has doubled twice showing a very good hand. His second double was not in pass out seat so he's not balancing. If you trust the opponents bidding, they have nine hearts between them. LHO has six hearts and RHO has three hearts. There would be no reason for West to bid 3♥ vulnerable on a five-card suit. However, it does not always pay you to trust the opponent's bidding. Partner has asked you to bid a suit and your only four-card suit is hearts. So do you pass for penalties or do you bid a three-card suit?

Six experts don't think that the final contract should be 3♥ doubled. One expert knows that there is an eight-card fit. If partner

is void in hearts, then you do have an eight-card fit.

Parker: "4♥—I have a good hand for this auction and am willing to play game somewhere. Let's assume he is 4=0=5=4 or 4=0=4=5 with some hand for instance, ♠AJxx♥-♦AKxxx♣KQJx or reverse the minors. I want to play game in our 5-3 fit or in spades if he has five spades."

Four experts join me and bid a three-card major. My rule is that you don't bid a three-card major unless there are no other alternative. On this hand they think that there are no other alternative. I tend to agree with them. I strongly believe that takeout doubles are meant to be taken out.

Schwartz: "3♠—Partner is almost certainly void in hearts so if partner raises to four, I might have play. With the opponents likely having six heart tricks, I can't risk pass."

King: "3♠—I would like to pass, but if partner has a heart void as in problem four they might make this, a true disaster at IMPs. Therefore I would bid 3♠ even though I am pretty sure this is a 4-3 fit."

Landen: "3♠—Doubtful that 3NT will make even if my woeful hearts hold up as a stopper."

Hopkins: "3♠—I am not likely to get doubled here because I don't expect the opponents to have any good trumps. Passing is very risky where the set might depend upon who has the ♥10."

Five experts pass partner's takeout double. The result of the hand depends on the layout of the opponent's hand.

Elster: "Pass—And pray. Passing looks like our last chance for a plus, if there is one."

Woolsey: "Pass—Five tricks are easier than nine, particularly when we don't have a known fit. Even if partner is void in hearts passing is likely to be right and sometimes the opponents don't have as many trumps as they say they have."

Zucker: "Pass—I already know the score for making three red at IMPs. -730, and some glares from teammates. I would avoid it if I could figure out which suit to bid, but its rolling dice at the three or four-level. Instead, I'll hope partner's announced big hand and my ♠KQ2 are good for five tricks. Moreover, partner doesn't double at this level unless he is willing for me to pass it. Jeff Roman once told me that if I thought a bid was 100% clear at matchpoints, but less clear at IMPs, I should probably do what I'd do at matchpoints. At matchpoints, I don't think anything else is particularly close at matchpoints, so at IMPs, I'll try it, too."

Adams: "Pass—They are probably going down even if I don't have a trump trick. I only need to beat this two out of three times for it to be right against the minus score I expect to get from bidding, even less if it's a big minus. I think I am at least 80% to set them, and at least 50% to set them multiple tricks."

Cappelletti: "Pass—Willing to take slight risk doubling them into game for the most likely plus."

There are exceptions to every rule. There are some times when bidding a three-card major is the least of evils.

SOLVERS' SCORES

John Adams	2♥	4NT	3♣	Dbl	Pass	460
Mike Cappelletti	2♠	5♣	3♦	Dbl	Pass	320
Marvin Elster	2♥	4♠	2♦	4♦	Pass	450
Robbie Hopkins	3♦	4♠	2♦	4♦	3♠	450
Fred King	2♥	4♦	2♦	Dbl	3♠	490
Steve Landen	2♥	4♠	2♦	Dbl	3♠	460
Steve Parker	2♥	5♣	2♦	4♦	4♥	460
Steve Robinson	3♦	4♦	3♣	3♠	3♠	480
Alan Schwartz	2♥	4♠	2♦	3♠	3♠	470
Kit Woolsey	3♦	4♦	2NT	3♠	Pass	460
Ron Zucker	2♥	5♣	2♦	Dbl	Pass	470

2012 TROPHY RACE STANDINGSwww.WashingtonBridgeLeague.org

Updated by John Adams

The Lovenberg Race is open to all WBL members; the Izzy Cohen Race is open to all WBL members who started the calendar year with less than 1500 masterpoints; the Tubbs Race is open to all WBL members who started the calendar year as a Non-Life Master with less than 500 masterpoints; the Woolridge Race is open to all WBL members who started the calendar year with less than 20 masterpoints.

Winners in each category receive four sessions of free plays. Second place gets two and third place gets one.

This list is up to date through June 21, 2012, not including the Round Robin. All points are subject to audit by the WBL Director.

Lovenberg

1	212.15	John Adams
2	126.40	Steve Robinson
3	80.40	Donna Rogall
4	77.14	Clyde Kruskal
5	74.71	William Cole
6	72.56	James Geist
7	66.16	Brad Theurer
8	65.08	Michael Gill
9	63.85	Noble Shore
10	61.32	Alfred Steinberg
11	57.34	Mark Shaw
12	57.32	Martin Graf
13	56.84	Peter Boyd
14	56.41	Ellen Klosson
15	56.01	David Ruderman
16	55.71	Jason Meyer
17	55.12	Michael Richey
18	53.43	Larry Kahn
19	52.82	Lloyd Rawley
20	52.54	William Hacker
21	51.30	Robert Bell
22	50.85	Leo LaSota
23	50.62	H John Edmonds
24	48.88	Leon Letwin
25	45.05	Merril Hirsh

Izzy Cohen

1	39.58	Alexander Prairie
2	39.50	Guillaume de Decker
3	29.93	Larry Wallace
4	29.24	Dale Sanders
5	29.04	David Genne
6	28.36	Matthew Lahut
7	27.66	Ernie Schuler
8	27.14	Leon Masiewicki
9	26.60	James Beller
10	24.90	Ajit Thyagarajan
11	24.61	Daniel Falk
12	24.26	Alfred Liepold
13	21.81	Gabriel Cornett
14	21.81	Eldon Compton
15	21.54	David Marshall

Tubbs

1	39.58	Alexander Prairie
2	27.66	Ernie Schuler
3	27.14	Leon Masiewicki
4	24.90	Ajit Thyagarajan
5	24.61	Daniel Falk
6	21.81	Gabriel Cornett
7	21.81	Eldon Compton
8	21.54	David Marshall
9	21.48	Julie Thomas
10	21.48	Ollie Thomas

Woolridge

1	14.74	Myron Goldstein
2	14.06	Jane Marsh
3	14.06	Johnny Marsh
4	11.80	Robert Linn
5	11.07	Shala Panbechi
6	11.07	Mahmoud Katirai
7	7.33	Tina Brinsfield
8	5.07	George Joseph
9	4.80	Maree Webster
10	4.01	Cecily Wolfe

**0-20
LESSON
& GAME****GUARANTEED
PARTNERS!****7:00PM
LESSON****7:30 - 10ISH
GAME****JOIN ANYTIME**

The cost is \$.50. This includes a 30 minute lesson followed by fun, enjoyable bridge for players with 0-20 masterpoints.

Lessons will cover slam bidding, weak twos, 3 level+ pre-empts, overcalls, takeout doubles, negative doubles, opening leads, and signaling. Each lesson will be tailored to the needs and interests of the players.

This is a great program for beginners as well as experienced social bridge players! Partners will be provided if needed. For more information, contact Bryan or Lois Geer at 301-236-0014 or by email at geerbridge@verizon.net.

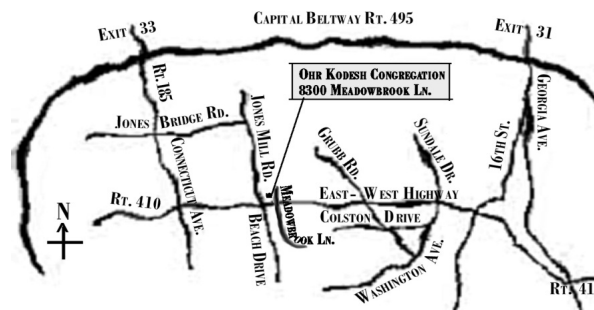
~ ♦ ♣ **SCHEDULE** ♥ ♠ ~

Most games held at Ohr Kodesh

07/26/2012StrataFlighted North American Pairs
08/02/12**WBL Sectional
 08/09/2012StrataFlighted North American Pairs
 08/16/2012Stratified Unit Championship
 08/23/2012StrataFlighted Unit Championship
 08/30/2012StrataFlighted North American Pair
 09/06/2012NVBA Sectional
 09/13/2012StrataFlighted Upgraded Club Championship
 09/20/2012StrataFlighted Grand National Teams
09/27/12**WBL Sectional
 10/04/2012District 6 STaC Stratified Pairs
 10/11/2012StrataFlighted Club Appreciation Pairs
 10/18/2012StrataFlighted BAM Teams; NLM Pairs
 10/25/2012NVBA Sectional
 11/01/2012StrataFlighted Grand National Teams
 11/08/2012StrataFlighted Unit Championship
 11/15/2012StrataFlighted Unit Championship
 11/22/2012Closed Thanksgiving
 11/29/2012StrataFlighted Unit Championship

Bold dates held at other locations: *TBD; **Kensington Town Hall/Armory

For a Last-Minute Partner, to say you'll be late, to hear announcements (closings posted by 4pm), or to contact the Unit Game for any reason, call the WBL Cell Phone:

(301) 395-2760**MAP TO OHR KODESH CONGREGATION**

ALERT! The Unit Game is now played at Ohr Kodesh. NO OUTSIDE FOOD IS ALLOWED. Snacks and drinks will be provided.

**WBL GUARANTEED
PARTNER PROGRAM**

You never need to miss the unit game because you don't have a partner at the last minute! The WBL has a guaranteed partner (GP) program for players who occasionally need a partner for the unit game. Here's how it works: we provide a standby partner; if an odd number of people in need of a partner arrive, we match the players as best we can, and the GP plays with the one who is left. (If there is an even number of players looking, the GP goes home). You can always get a game.

Players in search of partners should try to arrive between 7:00 and 7:15 (or call ahead). The partnership desk closes at 7:25. You can call the WBL cell phone **(301) 395-2760** at the last minute if are on your way and know you'll be at bit late.

To find a partner in the Open or B/C/D game at least a day in advance, contact **Barbara Doran** at UnitGamePartner@DistrictSix.org or barbd@star-power.net, or call 301-608-0347 between 9am and 10pm. To find a partner for the NLM game, contact **Shawn Stringer** at 301-275-6363 or ShStringer@aol.com.

You might want to volunteer for the GP program yourself. It's a great way to meet people. If you play on the night you're the GP, you play free. If you volunteer, you receive a free play for any future unit game whether or not you play that night.

Partnerships Close AT 7:25pm
 TO START THE GAME PROMPTLY AT 7:30PM. CALL IF YOU'RE LATE, OR YOU MAY NOT BE ACCOMMODATED.

UNIT GAME CARPOOL AVAILABLE

To arrange a carpool, contact Don Berman, Carpool Coordinator, at 301-776-3581 or don.berman@verizon.net.Or log on to the WBL's **Online Carpool Notices** at: www.WashingtonBridgeLeague.org.

THE UNIT GAME

Please contact **Chris Miller**, Club Manager and Chief Director, at unitgamedirector@districtsix.org if you have any questions about how the WBL Unit Game is run. This column answers some frequently asked questions.

NORTH AMERICAN PAIRS

From June to August, five of the Thursday Unit Games will be qualifiers for the North American Pairs – a chance for three pairs in each of three flights to win a subsidized trip to the Nationals in St Louis next March. Even if you don't plan on competing for the NABC, these qualifier games award extra masterpoints, half red, so come along to expedite your progress through the ranks of mastership!

SPORTSMANSHIP

We trust that everyone at the Unit Game always shows high standards of ethics and sportsmanship, but some members regularly go above and beyond, enhancing the game for all around them. If you have seen examples of this, please let the directing staff or a board member know – each year WBL awards a trophy for outstanding sportsmanship, and would like your input into the process. (For more details, see p. 23.)

UPCOMING SECTIONALS

- ♠ August 2-5, 2012, WBL, Kensington, MD
- ♣ September 6-9, 2012, NVBA, Fairfax, VA
- ♦ September 22-23, 2012, WBL NLM, Kensington, MD
- ♥ September 27-30, 2012, WBL, Kensington, MD
- ♠ October 25-28, 2012, NVBA, Fairfax, VA
- ♣ January 3-6, 2013, WBL, Kensington, MD
- ♦ February 7-10, 2013, NVBA, Fairfax, VA
- ♥ March 9-10, 2013, WBL, NLM, Kensington, MD
- ♠ April 4-7, 2013, WBL, Kensington, MD
- ♣ May 2-5, 2013, NVBA, Fairfax, VAD
- ♦ July 25-28, 2013, WBL, Kensington, MD
- ♥ September 19-22, 2013, NVBA, Fairfax, VAD
- ♠ October 3-6, 2013, WBL, Kensington, MD

~ ♣ ♦ ♥ ♠ ~

DO YOU HAVE ANY MUSCLE OR BRAINS TO SPARE?

The Washington Bridge League could use a little of either! In order to keep events exciting and entry fees low, the WBL relies on the goodness of our members to volunteer for small jobs at the Unit Game and Sectional Tournaments. Some jobs require brains while others require muscle. We'll be happy to employ either.

From setting up and breaking down tables, to publicity and events development, a little effort from you will make our bridge community even better. Busy schedule? No worries. Most volunteer assignments take only 15 minutes to 1 hour a month.

Here's how to help:

1. Reply by email, phone or in person if you are willing to help in any way.
2. Please indicate if you can offer any special skills (such as marketing or a strong back).
3. Someone will contact you shortly with a choice of assignments you can pick from.

Thank you in advance for any assistance you can provide.

Barbara Summers, Volunteer Coordinator, 301-598-5838, jimbarb1184@aol.com,

COMMITTEE ACTION #77

by **Rich Colker**, rcolker@gmail.com

Over the years I've encouraged readers of this column to develop the habit of making all of their calls and plays in proper tempo, including maintaining a deliberate tempo (not too slow but especially not too fast) even for calls and plays that seem obvious or clear-cut. The following deal, from the second final session of the NABC+ IMP Pairs at the 2011 Spring NABC in Louisville, Kentucky, may be one of the most compelling examples of precisely the sort of bad thing that can happen to those who ignore this advice.

Bd: 12; Dlr: West; Vul: N/S

North

♠ J94
♥ —
♦ AK762
♣ AQ1075

West

♠ 8632
♥ Q10932
♦ 54
♣ 43

East

♠ KQ1075
♥ J8764
♦ 3
♣ 62

South

♠ A
♥ AK5
♦ QJ1098
♣ KJ98

West

Pass
4♥
Pass
Pass
Pass

North

1♦
5♣⁽³⁾
Pass
Dbl⁽⁴⁾
Pass

East

2♦⁽¹⁾
Pass
7♥
Pass
Pass

South

2♠⁽²⁾
7♦
Pass
7NT

⁽¹⁾ Michaels (at least 5-5 in the majors)

⁽²⁾ Limit raise or better in diamonds

⁽³⁾ Made in 1-2 seconds rather than the 10 seconds required by regulation

⁽⁴⁾ Alleged by E/W to be slow; disputed by N/S

The Directors judged that North's failure to follow the regulation for a call following RHO's Skip Bid Warning (the next player following the skip bidder must wait for a suitable interval — about 10 seconds — while displaying a manner that suggests he is an active participant in the auction; the hand should be studied during the pause and any obvious display of disinterest is improper) demonstrably suggested to South that bidding 7NT would be successful. They therefore cancelled the 7NT bid and substituted a pass, adjusting the score to +1700 for N/S for 7♥x down seven (the most unfavorable result that was at all probable, as per Law 12C1e) with E/W receiving the reciprocal score. N/S appealed.

At the hearing North contended that West placed the Stop Card on the table before making the 4♥ bid, thus affording North a few seconds of thought before the bid actually hit the table. That, he believed, together with the time he took after the 4♥ bid was made, satisfied the Skip Bid regulation. West mentioned only that East asked about the 2♠ bid before bidding 7♥.

The Committee's decision hinged on whether a 5-7 second pause on a seven-level decision could constitute a break-in-tempo (BIT). The majority were of the opinion that a seven-second pause in a highly competitive auction was not necessarily a BIT. However, here the double of 7♥ had been made by a player who earlier in the same auction had taken only one second to bid after a Skip Bid Warning, estab-

...continued on p. 18

lishing a fast tempo for himself in a competitive auction. Therefore, taking seven seconds when 7♥ later came around must be considered a BIT for that player (if not for every player). The Committee considered the infraction of failing to observe the Skip Bid Warning to be as serious as the pause (if any) over 7♥ doubled.

Next the Committee considered whether passing 7♥ doubled was a logical alternative (LA) for South. They decided that passing 7♥ doubled had to be a LA for anyone who had passed 7♥ the first time, regardless of whether bidding 7NT looked clearly right to the Committee. The BIT made bidding more attractive to a player for whom bidding had not been automatic directly over 7♥. Since the BIT made the winning action more attractive,

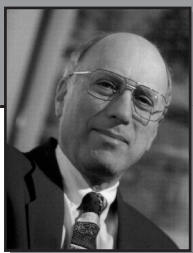
and a less successful action was a LA, the Committee adjusted the contract to 7♥ doubled, as had the Directors, and agreed that reciprocal 1700s was the appropriate result for both sides.

This decision was an excellent one both by the Directors and Appeals Committee. The fact that a Skip Bid Warning was involved made the decision easier, but was by no means a critical factor. A player who calls (or plays) quickly some of the time and more slowly at other times transmits unauthorized information (UI) to his partner. Regardless of whether partner actually uses that information or not (or how certain he is that his action was in no way influenced by it), neither Directors nor Committees will try to read the player's mind. If UI is present and if it demonstrably suggests the action partner took (and a less successful LA is present), the score will be adjusted. So there, you've been warned again.

GENE FISHER,

Certified Financial Planner & Tax CPA

**COMBINES FINANCIAL AND LIFE PLANNING
TEAMS WITH ACCLAIMED MONEY MANAGER**



Paid Advertisement

Paid Advertisement

Services Provided:

- ♦ Fixed Fee, Comprehensive Financial Health Checkup, Satisfaction Guaranteed (Clients have said: "It changed their lives")
- ♦ Planning for Income Tax-Free Sales of Securities, Real Estate, and Businesses
- ♦ Retirement planning—Both long and short term
- ♦ Reduce the high costs of college for children/grandchildren
- ♦ Estate & Gift Planning—Saving taxes and protecting assets for your loved ones

Free PowerPoint presentations to groups,
including Investment Training and Saving College Costs

Gene has been listed by Washingtonian Magazine as "1 of 156 People You Can Trust with Your Money" and by Marquis Who's Who In Finance & Industry.

(P) 301-983-1357 ♦ (F) 301-983-5502 ♦ genefi@comcast.net

♠ Fairfax, VA ♣ SEPTEMBER 6-9, 2012 ♦



NORTHERN VIRGINIA BRIDGE ASSOCIATION SEPTEMBER SENSATIONS SECTIONAL TOURNAMENT

The Arlington/Fairfax Elks Lodge #2188

8421 Arlington Boulevard, Fairfax, VA; 703-560-2188

THURSDAY, SEPTEMBER 6

STRATIFIED OPEN PAIRS (2000+/2000/750) & 299ER PAIRS (300/200/100) 10:00 a.m.

Norma's Game: Note new location: K of C Hall, 5115 Little Falls Rd., Arlington, VA, 703-892-1292

*Evening games at: NVBA: Beth El Hebrew Congregation, 3830 Seminary Road, Alexandria, VA or
WBL: Ohr Kodesh Congregation, 8300 Meadowbrook Ln, Chevy Chase, MD — E-W Hwy 410 E., left
Meadowbrook, left Freyman, lot on left.—No outside food.*

NVBA (Beth El) WBL

Intermediate/Newcomer Lecture 6:30 p.m.

STRATAFLIGHTED OPEN PAIRS (A/X=3000+/3000; B/C=2000/750) .. 7:00 p.m. 7:30 p.m.

NVBA 199ER PAIRS (200/100/50/20); WBL NLM PAIRS (NLM/100/50) .. 7:00 p.m. 7:30 p.m.

...REST OF TOURNAMENT AT ELKS LODGE...

FRIDAY, SEPTEMBER 7

Meet & Greet new ACBL CEO Robert Hartman—1:15 p.m.

Intermediate/Newcomer Lecture 1:15 p.m.

STRATAFLIGHTED A/X (3000+/3000) & B/C (2000/750) PAIRS 2 p.m.

299ER PAIRS (300/200/100) & 49ER PAIRS (50/20/5) 2 p.m.

TRIPLE NICKEL SWISS—5 rounds, 5 boards, 5 minutes a board .. 7:30 p.m.

299ER PAIRS (300/200/100) 7:30 p.m.

SATURDAY, SEPTEMBER 8

STRATAFLIGHTED A/X (3000+/3000) & B/C (2000/750) PAIRS 9:30 a.m.

299ER PAIRS (300/200/100) & 49ER PAIRS (50/20) 9:30 a.m.

NEWCOMER PAIRS (0-5) 9:30 a.m.

Special I/N Reception with ACBL CEO Robert Hartman—1:15 p.m.

FLIGHT A/X PAIRS (3000+/3000; 2-session Play-thru event) 2 & 7:30 p.m.

—Single session pairs accommodated during the evening session

STRATIFIED B/C PAIRS (2000/750; 2 single sessions) ... 2 & 7:30 p.m.

STRATIFIED SIDE GAME (3000+/3000) 2 p.m.

299ER PAIRS (300/200/100) & 49ER PAIRS (50/20/5) 2 p.m.

299ER PAIRS (300/200/100) 7:30 p.m.

SUNDAY, SEPTEMBER 9

FLIGHTS A/X (5000+/5000) SWISS TEAMS 11:00 a.m.

& BRACKETED FLIGHT B TEAMS (no single player >2000) .. 11:00 a.m.

B Teams Bracketed by Total Team Masterpoints: three overall places in each.

Both Team Games are 2-session events, with a brief break—food available on-site.

299ER SWISS TEAMS (300/200/100) (Single session) 11:00 a.m.

49ER SWISS TEAMS (50/20/5) (Single session) 11:00 a.m.

299ER SWISS TEAMS (300/200/100) (Single session) 3:15 p.m.

DIRECTIONS: From Route 50/Arlington Boulevard heading west from DC and Arlington AND from Route 495/Beltway: Continue on/Take Route 50 West about one mile outside the Beltway, and turn left at Javier Road (the second stoplight after the intersection of 50 and 495). Take an immediate right onto the access road that runs parallel to Route 50. The Elks Lodge will be two buildings down on your left—parking on the side and in the rear. From Fairfax, heading East on Route 50: Pass the intersection of Route 50 and Prosperity Avenue—the Prosperity Medical Center will be on your right. Between the first and second lights after Prosperity, turn right into the access road that runs parallel to Route 50 and look for the Elks Lodge immediately to your right—parking on the far side of the building and in the rear.

*Plenty of free
parking! On-site
snack bar plus lots of free
treats! Many great
restaurants nearby!*

*Championship Events
and a Full Schedule of
299er Events for Novice and
Intermediate Players!
Players with 0-5 Masterpoints
play FREE in ALL games!*

Tournament Chair

Margot Hennings,
703-560-0245

Partnership Chair

Mary Ann Kral,
703-608-6846

*Mid-Chart Conventions
permitted in all A/X Events*

**Next NVBA Sectional
Oct 25-28, '12 at Arlington/
Fairfax Elks Lodge
(Thurs at Beth El)**

www.nvba.org

♠ **Fairfax, VA** ♣ **OCTOBER 25-28, 2012** ♦

Fall
into
Fun!

NVBA FALL SECTIONAL TOURNAMENT

The Arlington/Fairfax Elks Lodge #2188

8421 Arlington Boulevard,
Fairfax, VA; 703-560-2213

THURSDAY, OCTOBER 25

STRATIFIED OPEN PAIRS (2000+/2000/750) & 299ER PAIRS (300/200/100)10:00 a.m.

Norma's Game: K of C Hall, 5115 Little Falls Rd., Arlington, VA, 703-892-1292

Evening games at: NVBA: Beth El Hebrew Congregation, 3830 Seminary Road, Alexandria, VA or
WBL: Ohr Kodesh Congregation, 8300 Meadowbrook Ln, Chevy Chase, MD — E-W Hwy 410 E., left
Meadowbrook, left Freyman, lot on left.—No outside food.

NVBA (Beth El) WBL

Intermediate/Newcomer Lecture6:30 p.m.

STRATAFLIGHTED OPEN PAIRS (A/X=3000+/3000; B/C=2000/750) ...7:00 p.m. ...7:30 p.m.

NVBA 199ER PAIRS (200/100/50/20); WBL NLM PAIRS (NLM/100/50) ..7:00 p.m. ...7:30 p.m.

...REST OF TOURNAMENT AT ELKS LODGE...

FRIDAY, OCTOBER 26

Intermediate/Newcomer Lecture1:15 p.m.

STRATAFLIGHTED A/X (3000+/3000) & B/C (2000/750) PAIRS 2 p.m.

299ER PAIRS (300/200/100) & 49ER PAIRS (50/20/5)2 p.m.

TRIPLE NICKEL SWISS—5 rounds, 5 boards, 5 minutes a board ..7:30 p.m.

299ER PAIRS (300/200/100)7:30 p.m.

SATURDAY, OCTOBER 27

STRATAFLIGHTED A/X (3000+/3000) & B/C (2000/750) PAIRS 9:30 a.m.

299ER PAIRS (300/200/100) & 49ER PAIRS (50/20)9:30 a.m.

NEWCOMER PAIRS (0-5)9:30 a.m.

Intermediate/Newcomer Lecture1:15 p.m.

STRATAFLIGHTED A/X (3000+/3000) & B/C (2000/750) PAIRS ..2 p.m.

299ER PAIRS (300/200/100) & 49ER PAIRS (50/20/5)2 p.m.

STRATIFIED OPEN PAIRS (2000+/2000/750)7:30 p.m.

299ER PAIRS (300/200/100)7:30 p.m.

SUNDAY, OCTOBER 28

FLIGHTS A/X (5000+/5000) SWISS TEAMS11:00 a.m.

& BRACKETED FLIGHT B TEAMS (no single player >2000) ..11:00 a.m.

B Teams Bracketed by Total Team Masterpoints: three overall places in each.

Both Team Games are 2-session events, with a brief break—food available on-site.

299ER SWISS TEAMS (300/200/100) (Single session)11:00 a.m.

49ER SWISS TEAMS (50/20/5) (Single session)11:00 a.m.

299ER SWISS TEAMS (300/200/100) (Single session)3:15 p.m.

DIRECTIONS: From Route 50/Arlington Boulevard heading west from DC and Arlington AND from Route 495/Beltway: Continue on/Take Route 50 West about one mile outside the Beltway, and turn left at Javier Road (the second stoplight after the intersection of 50 and 495). Take an immediate right onto the access road that runs parallel to Route 50. The Elks Lodge will be two buildings down on your left—parking on the side and in the rear. From Fairfax, heading East on Route 50: Pass the intersection of Route 50 and Prosperity Avenue—the Prosperity Medical Center will be on your right. Between the first and second lights after Prosperity, turn right into the access road that runs parallel to Route 50 and look for the Elks Lodge immediately to your right—parking on the far side of the building and in the rear.

Plenty of free
parking! On-site
snack bar plus lots of free
treats! Many great
restaurants nearby!

Championship Events
and a Full Schedule of
299er Events for Novice and
Intermediate Players!
Players with **0-5** Masterpoints
play **FREE** in **ALL** games!

Tournament Chair

Margot Hennings,
703-560-0245

Partnership Chair

Mary Ann Kral,
703-608-6846

Mid-Chart Conventions
permitted in all A/X Events

Next NVBA Sectional
Feb 7-10, '13 at Arlington/
Fairfax Elks Lodge
(Thurs at Beth El)

www.nvba.org

Bits & Pieces, cont. from p. 5...

Pairs is a North American Championship that begins in your club and concludes at the 2013 Spring NABC in St. Louis MO. Come out and play in a local club qualifier. You've got to play to win!

Club qualifying for the 2012-2013 event will be held during June, July, and August of 2012. There are three Flights, Open, 0-2000 and Non Life Master (with fewer than 500 points). Qualification in a flight qualifies you for all lower flights for which you are eligible. Qualification is by individual (not pair) — including flight eligibility — from any club qualifier in the ACBL directly to the District 6 Final. Flight eligibility is determined by your master point holding on June 1, 2012. All players who play in the District Final must have qualified at the club level and be bona fide members of District 6. **There will be no exceptions.** See the District 6 website (www.districtsix.org) for information on club games in your area.

The **District 6 Final** for all flights will be

held on the weekend of October 13-14, 2012. (Sites and times TBA) The Open Flight and 0-2000 Flight Finals will be 4-session events, with roughly half the field qualifying for the second day. The NLM Final will be a 2-session event held Sunday, October 14. **All flights will be played in the DC area.**

Pre-registration is required in order to play in the District Finals. Pairs must pre-register by October 4, 2012. Prepayment of \$50 (to cover a pair for 2-sessions) is required with registration. Details TBA.

Three pairs in each flight will qualify for the National Finals, to be held at the spring 2013 NABC in St. Louis.

Qualifiers who play in the National Final will be subsidized (to various extents) for travel expenses and hotel rooms by the ACBL and/or District 6. Membership dues or Life Master service fee must be current and continuous from the start of the District Final to the completion of the North American Pairs Final at the NABC

...continued on p. 22

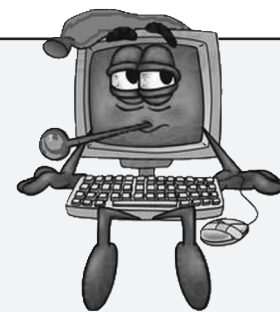
Is your computer old? Sluggish?
Brand new? Not connected?

Your computer Rx is here!

- Get online
- Help with purchase
- Computer tuneup
- Virus removal
- Networking
- email
- OKBridge
- BridgeBaseOnline (BB0)

Learn to use

- Your PC
- Browser
- Word, Excel
- Flickr
- Youtube
- Facebook
- Twitter
- Kidproofing
- Security issues
- Backup strategies
- Chicken soup
- and more...



Diane Walker



dibasoft
Computer Consulting

240 899-8534 - cell
diane@walkersweb.org

Paid Advertisement

Paid Advertisement

in order to play in the National Final.

For more information and directions to the playing sites, visit the District 6 web site at <http://www.districtsix.org> or contact Barbara Doran by phone at (301) 608-0347 or by email to barbd@starpower.net.

2011-2012 WBL/NVBA PLAYER OF THE YEAR FINAL STANDINGS

To be eligible, a player: (1) Must be a member (or pending member) of either the NVBA or the WBL; (2) Must attend at least three WBL and three NVBA sectionals during the contest period (August, 2010 through June, 2011). Points won on Tournament Thursday evenings are included in the totals, but do not count towards eligibility; (3) Must be a member in good standing of the ACBL and a local affiliate throughout the contest period and remain so through the award presentation.

Awards: Two trophies will be awarded.

Standings: Here are the final standings after eight of eight sectionals. The asterisk* indicates that the player has met eligibility requirements. *Congratulations to this season's trophy winners: William Cole and Thomas Jennings!*

Open Winners

Player	Points
1 John Adams	163.75
2 Leo LaSota	138.85
3 William Cole	127.36 *
4 Stephen Drodge	117.26 *
5 Mark Shaw	116.60 *
6 Steve Robinson	116.30
7 Steven Schatzow	108.47 *
8 John Miller	103.89 *
9 Kenneth Davis	99.73 *
10 David Milton	99.51 *
11 Barry Falgout	96.88 *
12 Stan Schenker	95.69 *
13 Helene Bauman	85.23 *
14 Peter Boyd	84.63
15 Earl Glickstein	77.81 *
16 Fred King	75.77 *
17 James Geist	72.78 *
18 Robert Bell	67.85 *
19 Andrew Gofreed	67.74 *
20 Ronald Zucker	66.79

NonLM Winners

Player	Points
1 Thomas Jennings	49.37 *
2 Ron Sutter	34.95 *
Yuen De Anda	34.95 *
4 Larry Wallace	33.41 *
5 Daniel Falk	32.35 *
6 Phillip Tseng	30.92 *
7 Alexander Prairie	30.73
8 Sylvia Shi	28.89
9 John Gauss	27.64 *
10 Georgette Weiss	26.80 *
11 Paul Setzer	25.62 *
12 Dottie Terrell	24.97 *
13 Kellen Leister	24.37 *
14 Carolyn Baird	24.07 *
15 Ernie Schuler	23.45 *
16 Dev Chattopadhyay	22.87 *
17 Thomas Grahame	22.86 *
18 Mike Ladd	21.23 *
19 Wayne Bardsley	21.11 *
20 John McCormick	20.52 *

CALL FOR NOMINATIONS

FOR THE MACHLIN TROPHY FOR SPORTSMANSHIP

In 2006, the WBL initiated a new annual award, the **Machlin Trophy for Sportsmanship** in honor of Jerry Machlin, whom many of you will remember as one of the greatest directors the game has ever known.

To date, the recipients of the award are: **Dr. Charles Stenger, Peter Boyd, James Geist, Rose Berman, Barbara Doran, and Millard Nachtwey**. Each year, a committee of the most recent five winners, (the longest standing to be the Machlin Committee Chair — *Peter Boyd*) is appointed to consider this year's nominees. The criteria for awarding the trophy are as follows:

“The candidate should (1) demonstrate strong ethical standards and a commitment to active ethics (i.e., full disclosure of systems and agreements to opponents, etc.); (2) behave graciously at the table after bad results or good results; (3) exhibit exemplary behavior at all times toward partner and opponents; (4) demonstrate an ability to get along with multiple partners; and (5) demonstrate a willingness to help mentor other players in the game. A player wouldn't necessarily have to satisfy all five, but these are the main the criteria that the selection committee will consider.”

We welcome nominations from the membership of the WBL. Please send your suggested candidate to Richard Ferrin at rferrin@mac.com or in person at the unit game. It would be appreciated if you would indicate in two or three sentences why you think your nominee is a good candidate for the award. We would like to hear from you by Aug. 1.

Did You Know?

The **Rockville Duplicate Bridge Club** has a game almost every day!

Join us often and spread the word!

DAY	TIME	LOCATION
Monday	11:15 AM	St James
Tuesday	7:00 PM	Rockville Senior Center
Thursday	11:15 AM	St James
Friday	11:15 AM	St James
Saturday	1:00 PM	St James

www.rockvilledbc.com

Need a Partner? Call Mark Lavine: 301-503-3348

Locations:

St James Episcopal Church 11815 Seven Locks Road Potomac, MD	Rockville Senior Center 1150 Carnation Dr Rockville, MD
--	---

WASHINGTON BRIDGE LEAGUE BOARD & MEMBER RESPONSIBILITIES

May 2012 - May 2013

AwardsDon Berman
Board Member ...Carole Banks, Lois Geer, Jim Geist, Clyde Kruskal, Ollie Thomas, Norman Mitchell, Don Berman
Bulletin Committee .Richard Ferrin (Chair), Donna Rogall (Editor), Rose Berman
CaddiesKitty Gottfried
Calendar of ObligationsDon Berman (Chair), Carole Banks
Carpool AssistanceRon Zucker
Charity CommitteeLinda Marshall
Cheer & SympathyFrances Burke
Club Relations Committee ..Ellen Cherniavsky (Chair), Lois Geer, Norman Mitchell
Conduct and Ethics CommitteeEllen Cherniavsky (Chair), Clyde Kruskal, Rose Berman, Fred King, Larry Wallace, Merrill Hirsh, Lloyd Rawley, Dick Wegman, Barbara Ames
Elections CommitteeJim Allen (Chair), Frances Burke, Richard Ferrin, Jim Geist
Electronic Communications ..Don Berman, Steve Robinson, John Adams
Executive Committee Richard Ferrin (Chair), Linda Marshall, Rose Berman, Ellen Cherniavsky
GNT & NAP LiaisonEllen Cherniavsky
HistorianPeter Boyd
Holiday PartyJim Geist (Chair), Kitty Gottfried, Millard Nachtwey
Machlin Sportsmanship AwardPeter Boyd (Chair), Millard Nachtwey, Barbara Doran, Rose Berman, Jim Geist
Membership Committee .Frances Burke (Secretary), Ed Burke
Membership Growth Linda Marshall (Chair), Gene Fisher, Barbara Summers, Bryan Geer, Ollie Thomas, Norman Mitchell
Novice ProgramShawn Stringer

OmbudsmanAdrienne Kuehneman
ParliamentarianOllie Thomas
PartnershipsBarbara Doran
PresidentRichard Ferrin
Policy Maintenance CommitteeLinda Marshall (Chair), Ellen Cherniavsky, Chris Miller, Donna Rogall
Publicity and MarketingClyde Kruskal (Chair), Lois Geer, Bob Levey, Charity Sack, Donna Rogall
Round Robin Committee .Jim Geist (Chair), Steve Robinson (Coordinator), Bryan Geer (0-300 Coordinator), John Adams, Bill Cole, Barbara Doran, Richard Ferrin, Arnie Frankel, Earl Glickstein, Dave Ruderman
SchedulingClyde Kruskal (Chair), Richard Ferrin, Barbara Doran, Chris Miller, Millard Nachtwey, Ted Ying
SecretaryLinda Marshall
Tournament ChairRon Zucker
Tournament NLM ChairShawn Stringer
Tournament Chief Director Millard Nachtwey
Tournament CommitteeRon Zucker (Chair), Jim Geist, Clyde Kruskal, Kitty Gottfried (hospitality), Lois Geer, Barbara Summers (volunteers)
TreasurerRose Berman
Unit Game Chief DirectorChris Miller
Unit Game Committee Clyde Kruskal (Chair), Chris Miller (Manager), Lois Geer, Jim Geist, Kitty Gottfried, Rose Berman
Unit Game Facility Operations Rose Berman
Unit RecorderBarry Bragin
Vice PresidentEllen Cherniavsky
Ways and Means Committee .Richard Ferrin (Chair), Ellen Cherniavsky, Barbara Ames
WebmasterDon Berman (Chair)
Youth Bridge Committee Don Berman (Chair)



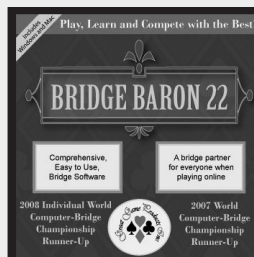
Great Game Products

7825 Tuckerman Lane, Suite 206, Potomac, MD 20854

1-800-GAMES-4-U or 301-299-9005

www.greatgameproducts.com • sales@bridgebaron.com

(Shipping/handling not included • All prices in US dollars)



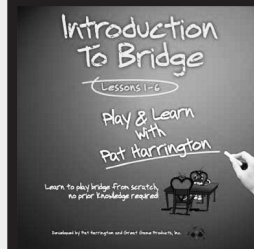
Bridge Baron 22 \$64.95

Comprehensive, easiest to use bridge game available. Download and CD available

Bridge Baron 22 is now available for iPad, iPhone and Android devices. ** features may vary

Windows 2000 / XP / Vista / 7 (English, Francais, Deutsch)

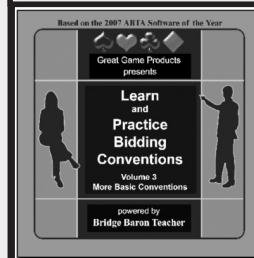
Macintosh/iMac/Mac OS X 10.5 or later (English, Francais, Deutsch)



Introduction to Bridge — Play & Learn with Pat Harrington \$34.95

Available on CD-Rom for Windows 2000/XP/Vista/7 (English Only)

- Teaches both bidding and play • Paced appropriately for beginners • Lessons 1-3 teach the mechanics, trick taking, and provide the background for bidding • Lessons 4-6 teach opening bids and their responses • Quizzes to reinforce your understanding • Provides an extensive glossary and reference section • Includes 38 carefully crafted instructional deals, and 92 BONUS practice hands • Presented in an easy-to-use, interactive format



Learn and Practice Bidding Conventions \$29.95

Available on CD-Rom for Windows 2000/XP/Vista/7 (English only)

- Learn Conventions allows you to practice each convention in Bridge Baron. LPBC teaches you six conventions in depth using the interactive Bridge Baron Teacher architecture, and allows you to practice these conventions as well. • LPBC teaches you and allows you to practice responses and rebids for conventions, while Learn Conventions does not offer practice of responses and rebids for conventions. • **LPBC 2** and **3** are also available. They each contain seven convnyons.

WASHINGTON BRIDGE LEAGUE MEMBER CLUBS

Updates at www.washingtonbridgeleague.org

WBL Unit Game

(301.395.2760)
Ohr Kodesh Congregation
8300 Meadowbrook Lane
Chevy Chase, MD 20815
wblmanager@gmail.com
Th 7:30

Andy's Thursday AM DBC

6311 Old Branch Rd
Camp Springs, MD 20748
Marie Wanner
301.645.8405
Th 10:00

Camp Springs DBC

6311 Old Branch Rd
Camp Springs, MD 20748
Anna McLean
301.839.2464
F 10:00 (open & novice)

Chevy Chase Bridge Club

DC Rec Dept
5601 Connecticut Ave NW
Washington, DC
Larry Galvin
301.984.4482
F 11:00

Duplicate Bridge Club of Southern Maryland

Swan Point Yacht and
Country Club
11550 Swan Point Blvd
Swan Point, MD
Porter Kier
301.259.2049
Lloyd Bowling (assistant)
F 10:00

Frederick Bridge Club

Church of the Transfiguration
6909 Maryland Ave.
Frederick, MD 20703
Scott Kiser
301.694.7260
M 7:15
Th 11:45
Su 1:00 Twice Monthly (Different site)

Gaithersburg Bridge Club

19310 Club House Rd.
Gaithersburg, Md
Mary Jane Von Moss
bobmjvonmoss@yahoo.com
301.216.5034
Tu 10:30: 100/500/Open
F 10:30: 100/500/Open

Guy Mason Center DBC

3600 Calvert Street NW
Washington DC
Larry Galvin
202.282.2180
M 11:00
Th 11:00

Holiday Park Senior Center

3950 Ferrara Dr.
Wheaton, MD
Carol McNeil
mbmchm@aol.com
301.990.1715
W 12:45

Jewish Community Center

<http://www.jccdbc.com>
6125 Montrose Road
Rockville, MD
Barbara Sadick
barbsadick@comcast.net
301.983.5034
M 7:15

Laurel Bridge Club

<http://www.districtsix.org/laurel/laurel.htm>
8564-A Laureldale Dr.
Laurel, Md
301.395.6810
Rose Berman
rose.berman@verizon.net
301.776.3581
Tu 7:30
W 7:30
F 8:00
Selected Sa 7:00

Lusby Bridge Club

Southern Pines Community
Center
John Etter
410.586.1988
301.855.9449
M 9:30
Tu 12:30

Margaret Schweinhaut Senior Center

1000 Forest Glen Rd.
Silver Spring, MD
240.777.8085
Tu 12:30
Th 12:30

**Montgomery County
Duplicate Bridge Club**
Unitarian Universalist
Church of Silver Spring
11612 New Hampshire Ave.
Silver Spring, MD 20903
Roz Dixon
rozdx2@aol.com
301.785.4441
M, W, F 10:30

Music and Memories

Dorothy Freed Memorial
Music Library Lab
5708 Shookstown Rd.
Frederick, MD 20702
Robert M. Freed
robear69@comcast.net
301.473.8138
Sa 7:15 Semi Monthly

Rockville Senior Center

<http://www.rockvilledbc.com>
1150 Carnation Dr.
Rockville, Md
Mark Lavine
mlavine@gsii.com
301.251.1238
Tu 7:00

Rockville Duplicate at St James Episcopal Church

<http://www.rockvilledbc.com>
11815 Seven Locks Road
Potomac, MD
Mark Lavine
mlavine@gsii.com
301.251.1238
M, Th, F 11:15
F 7:30
Sa 1:00 (Open & NLM)

Temple Beth Ami

<http://www.jccdbc.com>
14330 Traillah Rd
Rockville, MD
Barbara Sadick
barbsadick@comcast.net
301.983.5034
W 10:30

SATURDAY 0-NLM GAME & MINI-LESSON

Every Saturday, the **Rockville Duplicate Bridge Club** holds a 0 - Non Life Master game with a mini-lesson.

Mini-Lesson: Saturdays, 12:30 pm

0-NLM Game: 1:00 pm

Cost: \$6.00

Location: St. James Episcopal Church
11815 Seven Locks Road

Directions: Take Rt 270 to Exit 4B (from either direction) Montrose Road. This will take you to Seven Locks Road. Left on Seven Locks Rd 3 blocks. St James Church is on the left (going south), between Post Oak and Gainsboro Rd. There are two buildings, the game and mini-lesson are in the building on the left facing the church. There is plenty of parking in the rear, and a rear entrance to the building (1 flight of stairs if you enter from the rear of the building).

For additional information, contact **Mark Lavine**, 301-503-3348 or mlavine@gsii.com

Open Games: Sat.: 1pm, Mon, Thurs & Fri: 11:15am, Tue: 7pm (Tue only at Rockville Senior Center—see www.rockvilledbc.com for directions.)

THE WBL ONLINE

The Washington Bridge League is providing two new online services:

1. The WBL Online Bulletin Board

On an OPT IN basis only, this service will include an online directory of members. Send any of the following information that you're willing to have posted to the WBL webmaster, Don Berman, at don.berman@verizon.net or call him at 301-776-3581.

Name, Email Address, up to two Phone Numbers, ACBL Number

2. The WBL Online Partnership Desk

Check it out at washingtonbridgeleague.org Contact Clyde Kruskal at cpkfam@gmail.com or 301-395-0480 with any questions.



NLM MASTER POINTERS

by I/N Columnists: Ron Zucker, ron@motherzucker.com
Shawn Stringer, ShStringer@aol.com

MAJOR SUIT RAISES: BERGEN RAISES

Last month, we examined the Law of Total Tricks. One of the implications of the LAW is that, from a scoring perspective, you are safe at the level that matches your side's combined number of trump. In other words, if you have ten trumps between you and your partner, you are usually safe bidding to the 4-level, contracting for ten tricks, while if you have 9 trumps, you have relative safety at the 3 level.

Bidding theorist Marty Bergen incorporated this concept in devising his well-known major suit bidding structure. The Bergen Raise structure, while not in heavy use in top level competition, has many adherents, and almost every bridge player has been influenced by it to some degree, adapting some parts of it to their uses. It is also an easy convention to learn and use.

Bergen Raises are used by responder after partner has opened the bidding either 1♥ or 1♠. They divide raises by both strength and degree of fit. With 4 card support for partner's major suit and a game forcing hand, use Jacoby 2NT, which we discussed in a previous issue. With 4 card support and a limit raise (see earlier articles for what constitutes a limit raise), bid 3D. With 4 card support and a constructive raise of 7-9 support points, bid 3C. And with 4 card support and a bad hand, 0-6 support points, bid 3 of partner's major.

(Do not forget to alert any 3 level bid if you are playing Bergen Raises!) With three card support and a constructive raise, directly raise partner's major to 2 (e.g., 1♥-2♥). This denies four card support.

The advantages of using Bergen Raises are both preemptive and constructive. With the constructive raise, the difference between a 3 card raise and a 4 card raise is dramatic. Maryland expert Bill Cole considers the number of trump to be one of the most important pieces of information a partnership can exchange in an auction. Some hands that would not invite a game opposite 3 card support would invite, or even insist on, a game opposite 4 card support. Additionally, when you have a very weak hand, with 0-6 high card points, you can make it much harder if your LHO has a strong hand.

Whenever you choose to assign a conventional meaning to a bid, you must give up your existing meaning. With Bergen Raises, you lose two bids: the natural jump shift to 3♣ or 3♦. Whether playing 2/1 Game Forcing or Standard American, there are replacement methods to convey the hand where Responder would have jumped to 3 of a minor. The bottom line is that each partnership must decide which use will come up more often and which use is more beneficial in its overall bidding system. Proponents of Bergen Raises contend that the advantages gained by them outweigh the loss of a relatively infrequent jump to 3 of a minor.

So, let's see the bids in action. Assuming you and your partner have agreed to play Bergen Raises, and partner bids 1♥. What do you bid holding each of the following hands?

♠T96 ♥K975 ♦A962 ♣72	<i>Bid 3♣.</i> You have a good 7 HCP, with an ace and a king, a doubleton, and four card heart support.
♠53 ♥KQJ7 ♦852 ♣A964	<i>Bid 3♦.</i> You have excellent trump support and a side ace. With your doubleton, you have 11 points in support of hearts.
♠43 ♥T932 ♦Q64 ♣9872	<i>Bid 3♥.</i> You have a terrible hand with four card support for partner. You are reasonably sure that your LHO is about to bid something, and your doubleton ♠43 suggests it might be spades. Bidding 3♠ requires a much better hand than merely bidding 1♠. So make him guess at a high level.
♠9752 ♥J73 ♦JT82 ♣AQ	<i>Bid 2♥.</i> Remember that making a Bergen Raise requires 4 card support. Also, do not get confused by the bad four card spade suit. You only have enough values to get one message across to partner. Make that message your support and strength.

We think that Bergen Raises are a useful tool to consider adding to your bidding toolbox. You may or may not decide to continue playing them, but most bridge players have given them a try and appreciate their role in major suit bidding, hand evaluation, and safety in competitive auctions. If you've never played Bergen Raises, consider giving them a try.

STEPPING UP TO NEW HEIGHTS:

As of June 1, 2012

Junior Masters:

5 Masterpoints

Patricia M Christopher

Dr Donald S Cohen

Lillian Glaser

Kay H Linker

Julie Marquette

Mrs Susan S Oblon

Eleanor Sontag

Daniela R Tunsanu

Radu F Tunsanu

Mrs Helen Van Lowe

Club Masters: 20 MPs

Michael C Barth

Tina C Brinsfield

Linda S Mihm

Dr Lee P Rosky

Sectional Masters: 50 MPs

Mr Mark M Eisenstadt

Ms Ruth Fu

Mr Albert Pike III

NABC Masters: 200 MPs

Mr James A Summers Jr

WBL SOLVERS' CLUB'S NEW PROBLEMS

1) IMPs, You're Vulnerable

♠ AKJ65 ♥ 1054 ♦ - ♣ AQJ54

SOUTH	WEST	NORTH	EAST
			1 ♥
2 ♥	3 ♦ *	Dbl	3 ♥
???			*good heart raise

2) IMPs, Both Vulnerable

♠ K84 ♥ 1095 ♦ AJ1065 ♣ J10

SOUTH	WEST	NORTH	EAST
		3 ♦	Pass
			???

3) IMPs, You're Vulnerable

♠ AK2 ♥ 2 ♦ AQ43 ♣ KQ987

SOUTH	WEST	NORTH	EAST
1 ♣	1 ♠	DBL	Pass
???			

4) IMPs, You're Vulnerable

♠ A10872 ♥ Q3 ♦ Q64 ♣ AQ8

SOUTH	WEST	NORTH	EAST
1 ♠	Pass	1 ♦	1 ♥
2 ♥	Dbl	INT	Pass
Rdbl	Pass	Pass	Pass
		2 ♠	Pass
			???

5) IMPs, None Vulnerable

♠ A53 ♥ 1074 ♦ 9853 ♣ J53

SOUTH	WEST	NORTH	EAST
Pass	Pass	Dbl	1 ♦
????			Pass

Return answers by July 26 to:

Steve Robinson

2891 S. Abingdon St #A2,
Arlington VA, 22206
robinsonwr@erols.com

NEED A RIDE OR A PARTNER FOR THE THURSDAY UNIT GAME?

Contact **Barbara Doran** UnitGamePartner@DistrictSix.org, (301-608-0347 between 9am and 10pm) to find a partner in advance. For a last minute partner, call the **WBL cell phone (301-395-2760)**.

Ron Zucker, Carpool Coordinator can be contacted at 202-986-2166 or (ron@motherzucker.com) or log on to the **On-Line Carpool Notices** at www.WashingtonBridgeLeague.org.

Good luck! We look forward to seeing you on Thursday evenings.