
Heart of Bridge July 2021

1 message

Nicky <bridgeforpleasure@gmail.com>
Reply-To: bridgeforpleasure@gmail.com
To: Nicky <nickyrbainbridge@gmail.com>

4 July 2021 at 15:20

[View this email in your browser](#)[View this email in your browser](#)

**Bridge
at the Heart of
England**
www.bridgeforpleasure.co.uk



Follow Rugby Village Bridge Facebook Page

Rugby Village Bridge Website

Bridge in the New Normal Facebook Page

Learning, Playing, Teaching, Managing Bridge

Bumper

BAMSA!



Between 28th June and 1st July the 4th International conference about the impact of bridge on society was delivered by the BAMSA (Bridge as a Mind Sport for All) team based at University of Stirling.

"The conference will highlight the latest findings from BAMSA's research network. It will showcase the ways in which academic research can inform government policy and influence the grass-roots development of bridge as a mindsport."

The conference brought together bridge players, academics studying sociology and quite a few people who were both. Crucial and current topics for bridge players such as the impact of the pandemic, the impact of cheating and the need to ensure the game's survival were linked to topics of interest to academics and society such as well being, gender politics and education.

The programme and many prerecorded offerings are available at the link below. Recordings of the proceedings are due to be added.

[Link to the conference web site](#)

Two videos recorded before the proceedings that might interest bridge players....

A gender question:

[Why we Need the Under-26 Women Category](#)

Sofie Græsholt Sjødal (Under-26 Bridge Player and Bridge Teacher, Norway)

There might be a few reasons why the under-26 women category should be abolished. However, there are many more reasons why it should not. Sofie Græsholt Sjødal will tell you about why we need the category and how it can help to limit gender differences.

<https://www.youtube.com/watch?v=mEHjksBkVNM>

A view on how to teach bridge

Teaching Bridge

Rob Barrington (Bridge Teacher, USA)

Rob Barrington discusses the benefits of online education and offers strategies for successful teaching programmes.

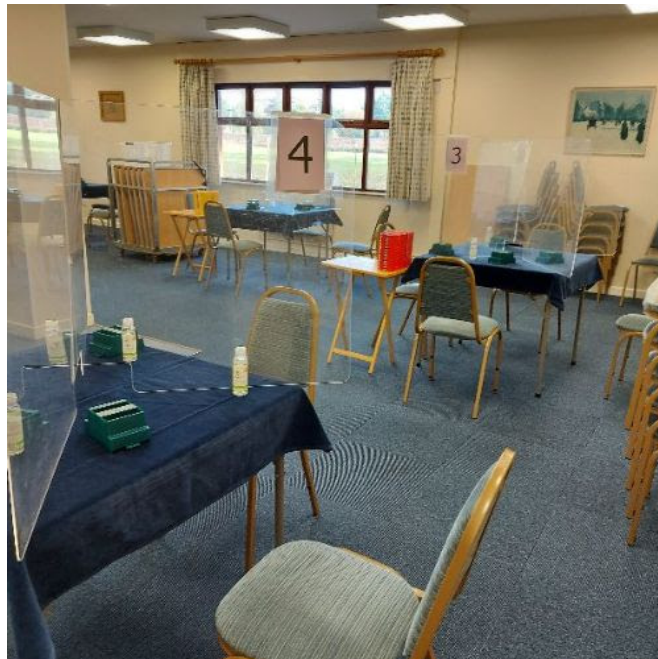
<https://www.youtube.com/watch?v=kB8S5nSgDzU>

The Return of Face to Face bridge

Eight English Clubs are now managing Face to Face bridge

West Midlands Bridge Club
Mid Essex Bridge Club
Nottingham Bridge Club
Crowborough Bridge Club
Stamford Bridge Club
South Croydon Bridge Club
Kenilworth Bridge Club
Rugby Village Bridge Club

Around thirty other bridge clubs have published their intention to resume Face to Face on or after 19th July.



Bridge Holiday Companies are operating Bridge Holidays

Bridge Overseas are running UK based bridge breaks since May.

Bernard Magee is offering UK bridge breaks from October.

Holiday companies are able to offer face to face bridge,

Check out your club

In the meantime we are lucky to have an online version of our game to keep our skills going.

Check out your local club. They may be offering online competitions, or practice, or lessons. Here's a list of clubs offering online bridge. get in touch and encourage them!

	Mon	Tue	Wed	Thu	Fri	Sat	Sun
Bolton	2	2	2	3	1	1	1
County	1		1	1	1		
Coventry & N Warwickshire			1	1		1	
Danetre			1				

Kenilworth	1	1	1	2	1		
Kettering	1						
Northampton	1		1		1		
Richmond	6	6	7	6	5	3	2
Rugby		1	1		1		
Rugby Village		1		1			
Stamford	3	2	2	2			
Tunbridge Wells	1	1	1	1	2		
West Midlands	1		1	1			

Check out online events from EBU Counties & Clubs

Most of these are online. It is likely that a continuous programme of online county events throughout the year would be welcomed by many players.

However a couple of counties, see below, are hopeful of running face to face events soon.

Organiser	Date	Start Time	Venue/Platform	Open to	Rounds	Format	Fee	Level/Prize
London	17 July 2021	11.30am	Realbridge	EBU Members	7x7	Swiss Pairs	£12.50 per player	Green Pointed
London	18 July 2021	11.30am	Realbridge	EBU Members	7x7	Swiss Teams	£12.50 per player	Green Pointed
Herefordshire	24 July 2021	11.00am	Realbridge	All	7x6	Swiss Pairs	£12.00 per player	Green Pointed
Herefordshire	25 July 2021	11.00am	Realbridge	All	7x6	Swiss Teams	£12.00 per player	Green Pointed
Hertfordshire	31 July 2021	12.00pm	Realbridge	All	7x7	Swiss Pairs	£12.00 per player	Green Pointed
Hertfordshire	01 August 2021	12.00pm	Realbridge	All	7x7	Swiss Teams	£12.00 per player	Green Pointed
Manchester	01 August 2021	11.00am	BRAMHALL VILLAGE HALL	NBO Members	7x7	Swiss Teams	£20.00 per player	Green Pointed
Bedfordshire	04 September 2021	11.00am	Realbridge	all	7x7	Swiss Pairs	£12.00 per player	Green Pointed
Guernsey	19 September 2021		St Pierre Park Hotel, Guernsey	All				
Cumbria/Westmorland	25 September 2021	11.00am	Realbridge	All	7x7	Swiss Teams	£12.00 per player	Green Pointed
Cumbria/Westmorland	26 September 2021	11.00am	Realbridge	All	7x7	Swiss Pairs	£12.00 per player	Green Pointed
Somerset	09 October 2021		Winter Gardens Weston super Mare	All				Green Pointed
Somerset	10 October 2021		Winter Gardens Weston super Mare	All				Green Pointed

Online Learning Opportunities

Time to Learn Bridge **FREE**

Free Beginners Lessons will resume in the Autumn at Rugby Village Bridge Club.

[Click to learn the wonderful game...](#)

Over the last few months there's been a huge increase in the offering of online bridge lessons, including for beginners.

For example, check out County Bridge Club (Leicester) at:

<http://www.bridgewebs.com/cbct>

More News...

Do you run bridge? or teach bridge? There's a newsletter about doing these in the new normal as we reopen after the pandemic. To subscribe click below.

[Subscribe to New Normal News](#)

Is there a topic we can look into?

[Click to ask us a question](#)

Get Listed Here

Do you run bridge? or teach bridge? Spread the word. Get listed here for free.

[Promote your bridge club/teaching/coaching etc](#)

Subscribe/Unsubscribe

If you don't want to receive this newsletter, click "Unsubscribe" below. I am always keen on feedback, good or bad, so do tell me...

[Enjoy the Bridge](#)

[Nicky](#)

There's lots of free information and resources related to bridge here:

[Click here for Bridge For Pleasure](#)

Is there a topic we can look into?

Subscribe/Unsubscribe

Copyright © 2021 Rugby Village Bridge, All rights reserved.
You are receiving this email because you opted in via our website.

Our mailing address is:
Rugby Village Bridge
Dunchurch Sportsfield and Village Hall
Rugby Road
Dunchurch, Rugby CV22 6PN
United Kingdom

[Add us to your address book](#)

Want to change how you receive these emails?
You can [update your preferences](#) or [unsubscribe from this list](#).

