



Nicky Bainbridge <nickyrbainbridge@gmail.com>

RVBC Just For Members 28

1 message

Nicky Bainbridge <rugbyvillagebridge@gmail.com>

22 March 2021 at 08:22

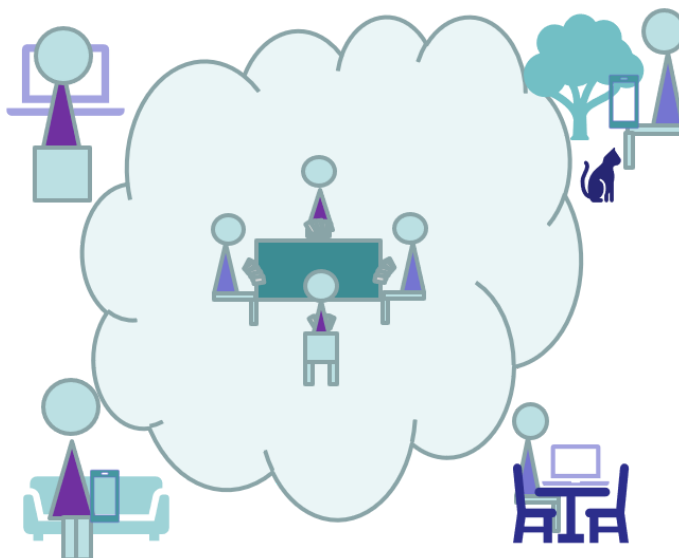
Reply-To: rugbyvillagebridge@gmail.com

To: *|FNAME|* <nickyrbainbridge@gmail.com>

[View this email in your browser](#)

Online For Now

www.rugbyvillagebridge.co.uk



Welcome to Just for Members 28

In this edition...

Tuesday Afternoon Change of Venue

Beginners, Novices, Improvers

Your choices for 2021/22

Club Timetable

Have a look at Online Bridge

Other News

Tuesday Afternoon Change of Venue

Congratulations to everyone who made it to the RealBridge Session last week

Five tables played on RealBridge. The results is on the web site as normal. Congratulations to Pat Anning and Justin Grigg who came top. They've already got Mr Bridge tea towel prizes, so we still have a few for new winners.

Let's do it again this week!

Bridge Club Live are building a replacement for clubs to play privately. However, it will be lacking some of the facilities we are used to.

I think it will be better for us to play on RealBridge for a second time. Please click on the link below at about 1.20pm on Tuesday.

Enter your full name.

If you know your EBU number please enter it in the "Id" field. It's OK to leave it blank if you don't know your number. Jim has filled it in for everyone who played last week.

Then click "Login".

If you have a partner arranged, and your partner is seated, please click on the seat opposite your partner.

If you have a partner arranged, and they are not seated, please find a table with room for a pair, and sit.

If you have no partner arranged, remain in the lobby and use the chat line to tell us you need a partner.

<https://play.realbridge.online/cs.html?p=210323128261&q=FirstSpringTuesday>

We will return to Bridge Club Live when it is fully up and running.

Beginners, Novices, Improvers

Another FREE Online Beginners Course

I have done several beginners courses in a row with many learners coming via U3A.

These lessons will continue to be free. It's a great time to be welcoming new players to the game! I am starting yet another, and anyone you know who would like to learn is welcome. If you already did the course, you are welcome to do it again.

Ten lessons, two lessons a week, from **12th APRIL**.

Lessons will be on

Mondays and Thursdays at 13.30pm,

so the course lasts five weeks. It's free so please pass the details on to anyone who might be interested.

Anyone who would like to repeat it for a refresher is most welcome.

I would like to learn bridge starting from 12th April 1.30pm

Bridge 3 Taking Acol Further

Bridge 3 covers Losing Trick Count, Further Card Play, Bidding very strong hands, Slam seeking, The Protective Position, and Transfers.

Ten lessons, two lessons a week, from **12th April**.

Lessons on

Mondays and Thursdays at 15.00pm,

so the course lasts five weeks.

The fee is £20. That's £2 per lesson. I will send details for bank transfers after the first lesson, so you can try a lesson before you pay.

I would like to Take Acol Further starting from 12th April 3.00pm

Tuesday Morning 10.00am Seminars

Tuesday 23rd March - Defence to Pre-empts

Tuesday 30th March - Michaels Cue Bid; Unusual 2NT

Tuesday 6th April - Multi Landy

OR Visit our Facebook page at 10.00am on Tuesday, and watch the live video.

OR After the event, you can go to our Facebook page at any time and select "videos" and view all the sessions.

The session will be free to all until 31st March.

Thursday Morning Practice 10.30am

The RealBridge practice is growing more popular. RealBridge allows us to have a half table, so we can guarantee everyone a game.

Players can take their time over the boards, which are set to exercise the topic from the previous Tuesday morning.

We have reduced the rounds to one board. You get to see more people and players only have to sit out for one board if we have a half table.

The link for the RealBridge is sent out with the link for the Tuesday seminar.

The session will be free to all until 31st March.

What the tea leaves say

I plan to keep the Tuesday Afternoons on BCL, the Tuesday morning Zoom seminars and the Thursday practice on RealBridge going.

I intend to keep teaching courses of lessons online. The schedule will change if....

I hope we will be back in Dunchurch from 17th May for Monday and Thursday Afternoons.

I have ideas of new sessions, but Jim and I can only do so much!

Your Choices for 2021/2022

Thanks to everyone who has already paid their membership subscription for the coming year!!!

Renew/take up membership

Membership to 31st March 2022

£12.00

OR 3 Tickets

FACE to FACE

Table money (Members Only)

£4.50

OR 1 Ticket

ONLINE

Tuesday Afternoon on BCL (Members Only)

£2.00 OR
2 sessions
for 1 Ticket

Tuesday Morning Seminar and Thursday Morning Practice

Members FREE

Any tickets with any date can be used as indicated above. They can be tickets you bought yourself, or that you have from other members. You can bring tickets to any face to face sessions we have at Dunchurch, or you can post/deliver them to me. Please contact me directly for the address.

The date on tickets is a date up to which they can be refunded in cash by the club. Obviously events have made this a bit inappropriate.

I will discuss refunding of any tickets dated 2020, contact me directly.

Subscribe to Tuesday/Thursday without Membership

Tuesday Morning Seminar and Thursday Morning Practice

Annual Season Ticket for Non-Members £10.00

One off Session for Non-Members £5.00

Learn with us - open to members and non members

Bridge 1 Getting Started Beginners (10 Lessons)	FREE
Bridge 2 Building Your Skills (10 Lessons)	£20.00
Bridge 3 Taking Acol Further (10 Lessons)	£20.00

Tuesday Afternoons

Well done to everyone joining in and playing a little more quickly!

We award MrBridge bridge puzzle tea towels to new winners of the sessions.
Only five left!!



[Click for all the Details about Bridge Club Live](#)

Timetable

Tuesdays

10.00 Tuesday Seminar (Facebook, Zoom & demo on BBO)

13.10 Tuesday Afternoon RVBC Duplicate (Bridge Club Live)

Thursdays

10.30 Thursday Practice related to Tuesday topic (RealBridge)

New Courses (Mondays and Thursdays)

Bridge 1 for Beginners at 13.30

Mondays and Thursdays (12th April - 13th May)

Bridge 3 Taking Acol Further at 15.00

Mondays and Thursdays (12th April - 13th May)

Have a look at Online Bridge

I really hope we'll be back playing at Dunchurch in the summer but in the meantime.....

If you can read this news letter, and your computer has a microphone and camera, you can take part in a Zoom meeting.

If you can take part in a Zoom meeting.....

I can show you round some online bridge.

I'd like to see some online bridge

Face to Face Update

The plan for reopening is good news. I hope we will back at Dunchurch in a few months, maybe May 17th.



Other news

EBU NICKO

We won our first round match in the NICKO! We have a bye in the second round. So astonishingly, we are in the third round. The second round has completed. Sixty-four top teams. We have drawn Milton Keynes A and are playing them on 31st March.

If you use YouTube, you can watch Bernard Magee's free Monday morning seminars.

Bernard Magee's YouTube Channel

Do you meet friends to play in the Social Room on Bridge Club Live?

Have you tried the audio/visual feature?

When all four of you are seated, all players click the red speaker symbol bottom right.

The system will start a new tab in your browser where you can see each other.

Probably more useful, return to the "Play Bridge" tab, and trying talking to each other.

Let me know how it goes.

I would love to hear your news and pass it on here.

Or good experiences with any local business. They need our support.

How are you coping? Doing anything bridge?

Click to send your news

Help Getting Online

Click to ask us a question

Subscribe/Unsubscribe

If you don't want to receive this newsletter, click "Unsubscribe" below.

I am always keen on feedback, good or bad, so do tell me...

Enjoy the Bridge

Nicky

More About Bridge

[Click here for Bridge For Pleasure](#)

Copyright © 2021 Rugby Village Bridge, All rights reserved.
You are receiving this email because you opted in via our website.

Our mailing address is:

Rugby Village Bridge
Dunchurch Sportsfield and Village Hall
Rugby Road
Dunchurch, Rugby CV22 6PN
United Kingdom

[Add us to your address book](#)

Want to change how you receive these emails?
You can [update your preferences](#) or [unsubscribe from this list](#).

