



Nicky Bainbridge <nickyrbainbridge@gmail.com>

RVBC Just for Members 26

1 message

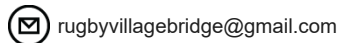
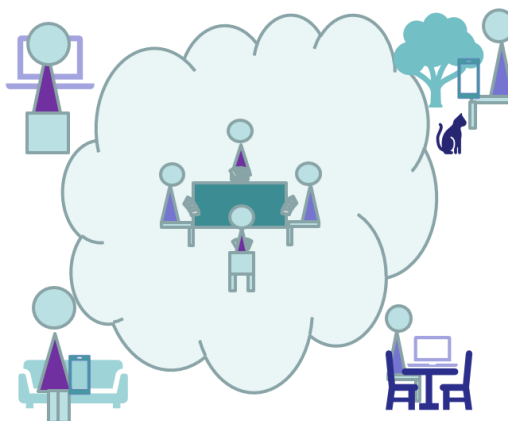
Nicky Bainbridge <rugbyvillagebridge@gmail.com>
Reply-To: rugbyvillagebridge@gmail.com
To: *|FNAME|* <nickyrbainbridge@gmail.com>

22 February 2021 at 08:07

[View this email in your browser](#)

Online For Now

www.rugbyvillagebridge.co.uk



Welcome to Just for Members 26

In this edition...

Have a look at Online Bridge

Club Timetable
(Another Beginners Course)

Describing your System (Briefly!)

Other News

Have a look atOnline Bridge

I really hope we'll be back playing at Dunchurch by the end of the year but in the meantime.....

If you can read this news letter, and your computer has a microphone and camera, you can take part in a Zoom meeting.

If you can take part in a Zoom meeting.....

I can show you round some online bridge.

I'd like to see some online bridge

Club Calendar

Another FREE Online Beginners Course

Ten lessons, two lessons a week, from 8th March.

Lessons will be on

Mondays and Thursdays at 13.30pm,

so the course lasts five weeks. It's free so please pass the details on to anyone who might be interested.

Anyone who would like to repeat it for a refresher is most welcome.

Tuesday Morning 10.00am Seminars

Tuesday 23rd February - When Opponents Overcall
Tuesday 2nd March - Advancing Overcalls
Tuesday 9th March - Three level Pre-empts
Tuesday 16th March - Weak Twos
Tuesday 23rd March - Defence to Pre-empts

[Click here](#) for a link to join the seminar using Zoom

OR Visit our [Facebook](#) page at 10.00am on Tuesday, and watch the live video.

OR After the event, you can go to our [Facebook](#) page at any time and select "videos" and view all the sessions.

The session will be free to all until 31st March.

Thursday Morning Practice 10.30am

The RealBridge practice is growing more popular. RealBridge allows us to have a half table, so we can guarantee everyone a game.

Players like to take their time over the boards, which are set to exercise the topic from the previous Tuesday morning.

We have reduced the rounds to one board, so that players only have to sit out for one board if we have a half table.

The link for the RealBridge is sent out with the link for the Tuesday seminar.

The session will be free to all until 31st March.

Tuesday Afternoons

Good to see new players joining in and eight tables two weeks running (and nearly nine last week).

We are awarding MrBridge bridge puzzle tea towels to new winners of the sessions. Congratulations to the latest new winners: Gill & Ken Bryan.

Only five left!!



[Click for all the Details about Bridge Club Live](#)

Club Timetable

Tuesdays

10.00 Tuesday Seminar (Facebook, Zoom & demo on BBO)

13.10 Tuesday Afternoon RVBC Duplicate (Bridge Club Live)

Thursdays

10.30 Thursday Practice related to Tuesday topic (RealBridge)

Courses of Lessons

Last Four Lessons

Bridge 1 for Beginners at 13.30

Mondays and Thursdays (22nd Feb - 4th March)

Bridge 2 Building Skills at 15.00

Mondays and Thursdays (22nd Feb - 4th March)

New Course

Bridge 1 for Beginners at 13.30

Mondays and Thursdays (8th March-7th April)

Face to Face Update

Face to face at Dunchurch is suspended until further notice.

With the rest of the country, we hope and plan to reopen at the earliest opportunity.



Describing Your System (Briefly!)

Five-card Majors

Brief overall system descriptions are not covered by bridge law or regulation that I know of. Players haven't always given a quick idea of what they are playing. Many players didn't use formal convention cards in clubs, and don't online.

Jim and I switch between two systems, one with five-card majors and one without. We do try to let opponents know which we are using. It has subtle knock on effects on your re-bids. Combined with variations in 1NT agreed opening strength, a lot of the responses and re-bids in common auctions are changed in ways that are not alerted and may not be understood by opponents who are looking at the details.

There may be players who would argue, but generally the two basic features of any Acol based system are:

- 1) Four-card majors; and
- 2) 12-14 1NT opening

So if you agree to open five-card majors, five-card spades or five-card suits, it is wrong to describe your system as Acol. Equally, if your 1NT opening is not based on 12-14 (possibly 11-14 in Protective position), you are not playing Acol.

Under the Laws of Duplicate Bridge you must disclose your partnership agreements

EBU regulations say you must announce a possible "Short" club suit opening. This would be any club suit opening where the opener may have 0, 1 or 2 clubs. If you agree to bid your better minor, with at least three cards, you are not obliged under EBU regulations to announce it. The EBU is catering for the group of elite players in England, and the preponderance of players in other countries who play five-card major systems.

The regulations assume you play at this level, and that you expect five-card major and better minor systems.

However, most people in England play Acol based systems. They will assume for example that: 1C,P,1S, P, 1NT shows an opening hand with four/five clubs, balanced with 15-16 HCPs. Playing five-card majors, it is possibly/probably a hand with a three-card club suit and 12-14 HCPs. It would not normally be announced.

You should make sure your opponents understand this. In our club, we have a rule that anyone playing a five-card major system informs their opponents at the beginning of the round and when a one club opening is made.

Make sure you understand the opponents opening 1C.

If opponents are playing Acol, you would expect this to show that clubs are the longest or equal longest suit in the hand.

If opponents are playing five-card majors with "better minor", you would expect at least three cards in the club suit, no five card major in the hand, but there could be a four-card major. However the club suit could be a genuine longest suit.

If opponents are playing five-card majors with an agreement to deny a four-card major by bidding a short club suit, there could be zero, one, two, three or more cards in the club suit, no five card major in the hand, but there could be a four-card major. However the club suit could be a genuine longest suit. There should be an announcement that the club suit "could be zero, one or two" according to partnership agreement.

There are a family of "Strong One Club" systems, Precision is probably the best know, where the 1C opening shows an unlimited hand strength of 16 HCPs or more, any shape. This should be alerted.

There are also systems where the opening 1C has limited, but strong, possible range, and no particular shape. These systems are different to the Precision like systems. This should be alerted. Any explanation should be detailed.

It's worth knowing which the opponents are using, and maybe discussing how your partnership responds.

Other news

EBU Diaries

The EBU have taken steps to ensure that only members who want diaries get them.

So, in addition to playing enough sessions to qualify for a diary you need to indicate in your member profile in MyEBU that you want one.

Otherwise you won't receive one.

If you can use YouTube, you can watch Bernard Magee's free Monday morning seminars.

[Bernard Magee's YouTube Channel](#)

NCBA Teams of Four

We have entered the Northants County teams of four league. We've played all our of our matches. We are lying third in the Division of six teams average 10.4/20. There's one more match to play between two other teams. It's not likely to change our position.

EBU NICKO

We won our first round match in the NICKO! We have a bye in the second round. So astonishingly, we are in the third round.

I would love to hear your news and pass it on here.

Or good experiences with any local business. They need our support.

How are you coping? Doing anything bridge?

[Click to send your news](#)

Rugby Real Bread

You can get artisan baked goods delivered once a fortnight. Jim and I recommend.

Email: rugbyrealbread@gmail.com

Facebook: Rugby Real Bread

Instagram: @RugbyRealBread

Phone: 01788 879259

Mobile: 07769966439

Help Getting Online

[Click to ask us a question](#)

Membership Renewal

Membership renewal has ceased now.

We are not generally accepting new members at the moment. Our membership year ends 31st March 2021.

Subscribe/Unsubscribe

If you don't want to receive this newsletter, click "Unsubscribe" below.

I am always keen on feedback, good or bad, so do tell me...

Enjoy the Bridge

Nicky

Clickables

The library of bridge related sites and pages on the web is getting too big to keep sending out as an appendix to this newsletter.

I have moved the information to my other web site. I will continue to put new stuff in the newsletter as I come across it, but then it will join all previous links at:

[Click here for Bridge For Pleasure](#)

Copyright © 2021 Rugby Village Bridge, All rights reserved.
You are receiving this email because you opted in via our website.

Our mailing address is:

Rugby Village Bridge
Dunchurch Sportsfield and Village Hall
Rugby Road
Dunchurch, Rugby CV22 6PN
United Kingdom

[Add us to your address book](#)

Want to change how you receive these emails?
You can [update your preferences](#) or [unsubscribe from this list](#).

