

# GRAPEVINE - OCTOBER 2021



## EDITORS NOTE

It's hard to believe we are heading into October. Summer is officially over and we are now into the Fall; clubs are slowly, ever so slowly, starting to reopen for F2F games and we are THRILLED that Angus Glen is reopening this month, with Elgin Barrow soon to follow, we hope, still awaiting word from the Township!



## PLAYERS CORNER – New Names and Faces

As we move into Fall, there have been a few changes, which have brought us new players and we would like to welcome them all!

Carolyn Fowler (riverdee)	Lib Gibson (grandmalib)
Fran Muirhead (chesamaria)	Joann Nixon (larry5)
Anne Richards (anne38)	Norman Rothschild (ILPBA)
Miriam Schmideg (miris48)	Linda Staffer (ell8)
Gisele Lynch (lyngis2345)	Judy Cardwell (summernord)
Harriet Star (star64)	Judi Bermen (JCB333)
Liz Hooey (Liz0246)	Rosyln Frieberg (rf1430)

## FOR SOMETHING DIFFERENT, TRY SOME BRIDGE TRIVIA

Well, we thought we'd try something a little different and add some FUN into your reading. Here are five (5) trivia questions all relating to bridge, see how you do. Answers are below

1. This tennis star used bridge games as opportunities for relaxation. When she traveled, she would find a nearby bridge club and join in. She once said, 'No matter where I go, I can always make new friends at the bridge table.' Who is she?
2. This famous cartoonist was an avid bridge player who often depicted bridge players in his comic strips. One of his characters was named an Honorary Life Master by the American Contract Bridge League (ACBL.) Who was he?
3. What does UDCA stand for?
4. Who invented contract bridge?
5. In which century was a game known as Bridge first played?

(answers on page 8)

# GRAPEVINE - OCTOBER 2021



## CLUB NEWS AND THE RETURN FACE TO FACE

F2F is restarting, including our Angus Glen games, starting Oct 4th. Games start at 12:45 but are limited to 5-tables based on the room size (we are pushing for a bigger room). Remember to pre-register via email to [sbealsca@yahoo.co.uk](mailto:sbealsca@yahoo.co.uk). For those playing we have been told by the centre that you must use the EAST Entrance (by the library).

Naturally, there are questions around the reopening's; here are the most frequent

### 1. IS RHBC GOING TO CONTINUE TO RUN ONLINE OPEN GAMES?

YES! We don't know what things will look like, and as we mentioned in our September Grapevine, we don't want to run 'two small games', one online and one F2F, but we want to give players a game of their choosing to play in, so we will see how long online remains by the continued popularity of the game(s). Ideally, we'd like two large games!

### 2. IS RHBC GOING TO CONTINUE TO RUN LIMITED GAMES ONLINE?

ABSOLUTELY! We will continue to run all our limited games online. As long as there is an interest and the games are viable then we will run them.

### 3. WHAT IS THE CAPACITY LIMIT FOR ELGIN BARROW, TABLES?

UNSURE, however, we do know with Stage 3 of the reopening and the room size, we are hopeful that we will be allowed 12 tables. Rooms must be able to space the tables 6' apart. Angus Glen is a small room and therefore the limitation is set at 5 tables.

### 4. IS RHBC GOING TO RUN LIMITED GAMES F2F?

WE DON'T KNOW, YET! In some cases, we don't have a facility –

Tues, Wed (AM) Sun; will remain online, no facility

Mon (0-500) we will keep online, no F2F

Sat (0-500); we don't know what facility will be available, online for now

Thu (Open), but we would like to add (0-500) F2F when we reopen



5. CAN YOU LINK AN OPEN ONLINE + F2F GAME TO CREATE A LARGE GAME?  
GREAT IDEA, but sadly no. They are two distinct games; we can't take a F2F game with 12 tables and 'link' it to an online game of 8 tables to make a single 20-table game.

6. WHERE CAN I GET A COPY OF MY COVID-19 VACCINATION?  
ONTARIO GOVERNMENT WEBSITE the URL below will take you to the government website where you can find and download proof of your vaccine, in case you misplaced the paper copy. Note you will need to 'click' the check box for terms of use before proceeding. <https://covid19.ontariohealth.ca>

## RECOGNITIONS

We would also like to 'call out' a few players who have moved up a game level -

### Moved Out of (0-50) Game

Brian Boake  
Sameera Mufti

### Moved Out of (0-200) Game

Sue Reed  
Cathy and David Tubb

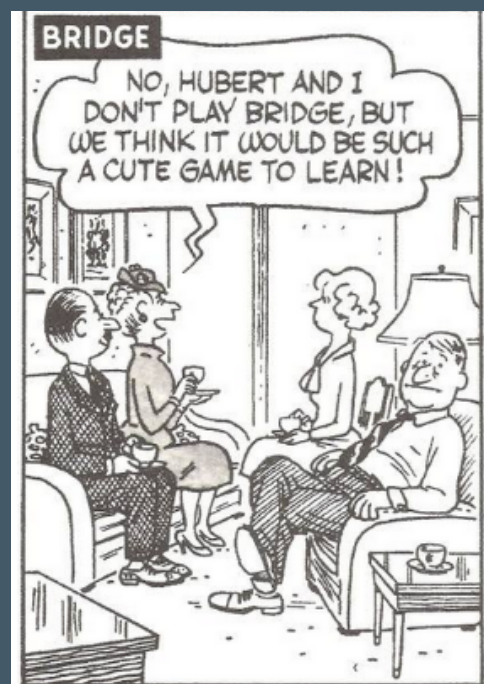
Great job all of you and CONGRATULATIONS!

## GAME UPDATES and HOLIDAY SCHEDULE

Canadian Thanksgiving (Mon Oct 11) – online only, facility closed. Weekend games will run online as usual.

Zoom Calls Invitations are for those players who play weekly in any one of our limited games: 0-50, 0-200 or 0-300.

Wed (0-200) @ 9:30AM – game has restarted and is growing as weather changes!



# GRAPEVINE - OCTOBER 2021



## MIKE & JULIE'S LESSONS ARE IN FULL SWING

Mike and Julie kicked off their Fall Series of Lessons in September and we've heard nothing but great things! Here is a comment from Elaine Mowat:

*“Out of curiosity and an interest to play better bridge my Partner and I signed up for the Major Suit Responses classes offered by Mike and Julie. We had our first lesson and I can't wait to find out what we will learn next! The hour lesson was packed with information and Mike and Julie walked us through every step of the process, beginning to the end. Later that day we received all of the hands we worked through and the notes to support the lesson. I was very impressed with the quality of the material and the process used by Mike and Julie. This is the first-class either of us has taken with them, but I hope it won't be the last”.*



## LESSONS FROM LORRAINE EAGLESHAM

We sent out a note on “Lessons from Lorraine”, but a reminder for those interested in her Bridge Basics for the newer players or those wanting to learn bridge. If you have taken the beginner series then you'll like

### Intermediate 2

- Bridge Basics on Thursdays, starting Oct 7 @ 4:00PM, 2 hours - \$240
- Intermediate 2 on Tuesdays, starting Oct 5 @ 4:00PM, 2 hours - \$200

Hot off the Press! Lorraine is offering a NEW COURSE, 4-weeks, starting Nov 4 on Thu from 4:00 – 6:00; the topic is one that has been requested “Play of the Hand” for \$120 including textbook.

For more information, please contact Lorraine at [Imeaglesham@aol.com](mailto:Imeaglesham@aol.com)

# GRAPEVINE - OCTOBER 2021



## SADLY, WE SAY GOODBYE

It is always so difficult to say goodbye and over the past 18 months we have lost so many of our bridge friends and now we've lost two more, gone, but never forgotten.

Brian Cowen

(1941 – 2021)

We lost Brian after a courageous battle with cancer on September 11, 2021.

He was moved to Hill House, Hospice, and Palliative Care in Richmond Hill.

Stella told us "I cannot say enough good things about the care, the people,

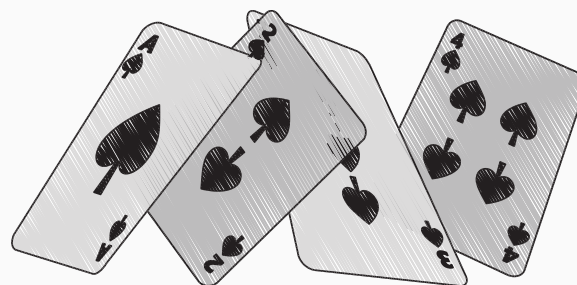
and the kindness of Hill House" She also said that in Brian's last days he was happy,

pain-free, and with his family. Brian leaves behind his loving wife Stella and his three

daughters, Celine, Renee, and Danielle. The family will hold a private celebration of life,

but online condolences and donations can be left at Marshalls Funeral Home:

<https://www.marshallfuneralhome.com/>



Martin Taylor

(1941 – 2021)

Martin was along time bridge player and a member of the Thornhill Golf Club Bridge

Game where he regularly partnered with Bill Myers. Bill introduced Martin (mandy2157)

to RHBC's Wed evening games where Martin's wife Dianne was often found playing with

Roseanne Myers.

# GRAPEVINE - OCTOBER 2021



## CLUB CORNER

There is an ugly word in bridge, okay there are many, but this one is called “PSYCH” or “PSYCHIC BIDDING” and most of us have come up against it and may not even know it!

What is a psych(ic) bid? A psychic bid is one that grossly misstates the power and/or suit lengths of one's hand. It is used deliberately to deceive the opponents. Normally, the psychic bid is made with a weak hand, overstating its overall strength, length, and strength in a particular suit, or both. Do not mistake a psychic bid for a ‘poor bid’, for example, opening a weak two with a 6-card suit, and a single point in your hand is not a psychic bid.

What are the laws? Per rules of the game, the partner of a player who has psyched must not take advantage of any special knowledge of the partnership's habits. A partnership that uses occasional psychic bids must take care to ensure full disclosure — not only of their formal bidding system but also of their habits.

For example, if a partnership tends to psych under certain circumstances, it is much better prepared to recognize a psych, and to cope with it, than are its opponents. The game's Laws and Proprieties, therefore, require disclosure of the partnership's tendency.

Who psychs? Since they are not illegal, we see them not only in F2F but online and at tournaments. We see them in our open games, but we also have a wide variety of players in our open games, ranging from World Class right down to Beginners. RHBC has listened to the players and we have set a policy as follows –

Limited Games – psychic bidding is not permitted, period. Honestly, we aren't sure many would know ‘how to even make this type of bid, at least on purpose’.

Open Games – a player may make a psychic bid ONE-TIME and only one time, not per game, but once, ever. You will be warned, if it is repeated, then you will be awarded an AVG MINUS if the opponents are harmed.

# GRAPEVINE - OCTOBER 2021



Why are we doing this? There have been numerous complaints, not only about ‘psyches’, but about overall ‘bad bidding and bad bridge’ online. Bridge is a game of bidding and competitive bidding, we don’t want to lose sight of that, or take away a player's ability to bid competitively, but we also want to maintain the “spirit” of the game. It is a slippery slope we are trying to navigate.

## ONLINE GAME FEES ARE INCREASING, BUT NOT RIGHT AWAY

We know F2F is returning, area clubs are reopening, and as they reopen, we DO NOT want to make playing online more advantageous than returning to the club.

Therefore, the game fee to play online should align with the F2F fee. Online fees will increase to 475BB\$ (subject to change) when we can increase F2F capacity to at least 10 tables.

We WILL NOT increase any of our Limited game fees or any game that does not have a F2F game running. The following games will remain at 3BB\$.

Mon (0-500),

Tues (0-300), Tues (Ladies Game),

Wed (0-200), Wed Open (PM),

Sat (0-500),

Sun (all games)

Note: As clubs return F2F, we may start dropping some of the online games, it all depends on you and your interest in the game. If it is viable and popular, we will continue to host. However, as we get back to ‘life and bridge’ as it was pre-covid we are hopeful that F2F will also grow in popularity.

# GRAPEVINE - OCTOBER 2021



## TRIVIA ANSWERS

1. Martina Navratilova - She wrote the introduction to Audrey Grant's 'The Club Series-Introduction to Bridge'. She's also teamed up with Billie Jean King in an email course designed to help teach bridge to newcomers.
2. Charles Schulz - The Life Master was Snoopy, although it was usually Woodstock and his buddies who were too busy playing bridge to talk to Snoopy.
3. Upside Down Count and Attitude - With this carding agreement, the standard count and signals are reversed. Now a low card is encouraging and a high card is discouraging. Also, when signaling, high-low shows an odd count, and low-high shows an even count. There are lots of other carding agreements, such as Odd-Even, Lavinthal, and others. UDCA is more commonly used by players who are more experienced or advanced.
4. Harold Vanderbilt - Vanderbilt, the grandson of Cornelius Vanderbilt, was sailing through the Panama Canal when one of his guests infuriated him with her wacky scoring system for a system of auction bridge. He invented the scoring system for contract bridge that night, and it has remained almost unchanged to this day.
5. 19th - Whilst there remains a dispute as to whether the game was first played in India or Egypt, and whether the substance of the game drew most heavily from Whist, Plafond (France), or Biritch (Russia)- it is known that the game was first played in London and New York for the first time in the 1890s.

