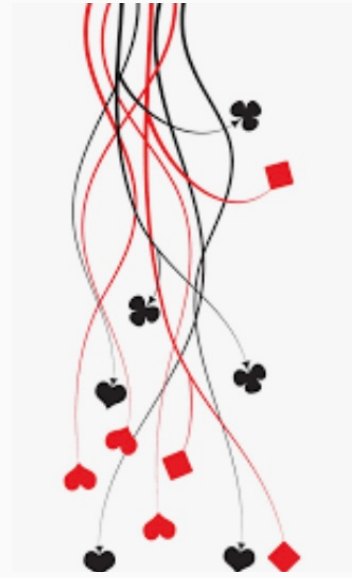




Editors Note

We would like to thank everyone for the positive feedback we've received on the RHBC Grapevine. We are delighted that you enjoy reading about players and seeing faces as this comment demonstrates "Thanks for putting in the photos - now I know what my partner looks like"!!!

Another player asked, "Where are the RHBC team photos"? We didn't have a good answer, except they are on the website, and we hate our pictures being taken, but here we are – YOUR RHBC TEAM



**Izhar Haque
aka Zari1943**



**Claude Gannon
aka gannonc**



**Susan Beals
aka Klingon29**

Izhar has been keeping very busy with RealBridge (RB), which is a lot of fun for players who want to have a Face-two-Face (F2F) experience while playing a non sanctioned game. When he isn't running a game on RB, he is directing the RHBC games on Thu and Sat.

Claude keeps very busy with online bridge, particularly working with our limited games. She is 'itching' to travel to Seattle to see her grandchildren whom she misses greatly and CANNOT wait to get back F2F to see all our players. Bridge is a 'social' game, even though competitive, and online just isn't the same (and she hates misclicks)!

Susan manages to keep busy with online bridge, developing the limited games, assisting with the Club Lessons, and running the Zoom calls for the Limited Game Participants. Oh, and for all those who have asked, she told us "No she doesn't speak Klingon"!

GRAPEVINE - JUNE 2021



THE BRIDGE TABLE

GAME REGISTRATION

As directors we have a lot of 'pre-game' activities to address, the key one is the formatting. What is formatting? So glad you asked!

We format the game based on how many TABLES are playing. The majority of our games run 24 bds, this means for 10 tables, 8 rounds of 3 bds, 12 tables, 12 rounds of 2 bds. The director has to watch the Entries, particularly as game time approaches, if we don't change the format BEFORE the game begins, we cannot change it and you could end up playing Revenge Rounds, Howell instead of Mitchell, or a format that doesn't provide the best bridge experience.

We, therefore, ask you to register at least 10-15 minutes prior to the game. Please don't wait until 12:28 to register. If you are bringing in a new player, please call Susan Beals to get them added to the database in advance, not at 12:27, earlier in the day is best.

HOW MANY POINTS DO YOU NEED TO OPEN A HAND?

This may seem like a 'trick question', but it isn't. The first thing that has to be stated is: there are multiple charts (rules) used when directing bridge games.

RHBC uses two Charts - Open Chart (for Open Games) and Basic+ Chart (for our 0-50, 0-200, 0-300 and 0-500 Games).

Openings bids are treated differently depending on the game you are in!!

Open Games (Open Chart) bids area based on "Near-Average Strength" which means: A hand that has at least 8 HCP or meets the "Rule of 17". (HCP + total of 2 longest suits = 17).

Limited Games (Basic+) are based on "Average Strength" which means: A hand that has at least 10 HCP or meets the "Rule of 19". (HCP + total of 2 longest suits = 19).

Rule of 17: $8\text{HCP} + \text{Length in 2 Suits}; 6-4-3-1 + 8 = 6+4+8 = 18$ (meets Rule of 17)

Rule of 19: $10\text{HCP} + \text{Length in 2 Suits}; 6-4-1-1 + 10 = 6+4+10 = 20$ (meets Rule of 19)

WHAT IS LINKING?

We have been asked by players in the OPEN games "What does LINKING mean"? "What does it do"? When the club runs a LIMITED GAME AND AN OPEN GAME within a certain period of time, for example, 30 minutes, the limited game can be LINKED to the open game. When Master Points are awarded for the OPEN GAME, they are awarded based on the combined total of tables in the two games.

For example: 0-500 Game = 10 tables;
Open Game = 14 tables. We LINK the 0-500 game to the Open game and MPS awarded for the Open Game are based on 24 tables playing; more tables, more points. The Limited Game remains the same.

DO I STILL HAVE TO ALERT/EXPLAIN IF I PREANNOUNCE?

In a word = YES!

If you pre-announce a system, such as opening a short ♣, short ♦, open strong 2♦, opening a weak NT (11-14) (14-18), or any variation, all of these MUST still be announced when you make the bid. We know it seems redundant, but it is the rule implemented, so we must adhere to it.



PLAYERS CORNER

With Heavy Hearts we say
 goodbye to two of our own

Ronald (Ron) Stokal - May 2021

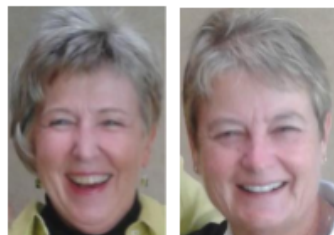
We just learned that Ron passed away a few days ago. His passing was unexpected, he succumbed to a long-term condition. He will be missed by all who knew him. Ron was a regular player with RHBC and will be missed by his many partners and bridge friends. He was always available to lend a helping hand and offer his assistance.



Oct 7, 1946 – May 9, 2021

Donald Chiang (lxlucas) passed away May 9, 2021, succumbing to complications from acute pancreatitis. Leaving behind a son, Lucas, and daughter Joyce as well as brothers and sisters. Donald was a long-time member of RHBC and online he played with Joan Rotenberg (24joanrote), but he played with many others. He enjoyed helping the newer players and coaching, mentoring, and guiding them. He will be missed by all who knew him

Congratulations Carol Clements!



A birdie whispered in our ear that Carol became a life master in March 2021. The birdie was migrating North and late getting the news to us so it missed the May Grapevine, but good news is never too late!

Carol plays in the club games with her life partner, Gail Pimm (ebone) and as you can see by their results, they are doing very well and love the game! Congratulations Carol!

Carol Clements
 aka cclements

Gail Pimm
 aka ebone

Congratulations Paul Leonard!!

The birdie got around this month and whispered that Paul became a Sapphire Life Master in April 2021! Paul is a long-time bridge player with RHBC and you often find him in an Aurora game! Congratulations Paul on achieving this milestone!



Player Update - Brian Cowen

Stella has shared with us that Brian has had one round of chemotherapy and the doctors have said he cannot stand anymore, they are taking a toll on him, but he is a trooper and has the loving support of his family around him. Stella has asked, "please keep us in your prayers".





Now for Something Different...

players not playing online, but we miss all the same!

We have players who do not play in online club games for many reasons. However, they are still part of our club and we miss them, so let's see a few of them over one year later!



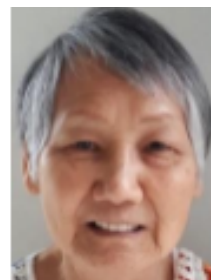
Virginia Lee is a regular player in the Saturday RHBC F2F game and you often saw her with Peter Auciello (who passed on March 21, 2020) or Sylvia Lem. Virginia doesn't play online, but she is looking at picking up a game! It would be great to see her virtually.



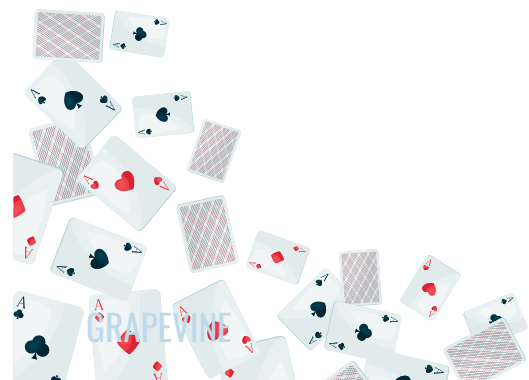
John Richards is a long time RHBC club player. You will all know him from Elgin Barrow on Thursday where he 'takes the money'! He doesn't play on BBO, it is too hard on his eyes. He is keeping busy with movies and TV series, online shopping, oh and eating! Prior to the latest lockdown he played 'Kitchen Bridge' with a bubble of friends, including his regular F2F partner Saber Saleuddin! Stay safe John.



Saber Saleuddin tells us 'like everyone I am so bored! I got my first shot, get my second in July, and am going to travel to Vancouver to see my family, then I hope to go to Europe'. He misses the F2F games and all the players and wishes everyone well and good health. You see him F2F playing with John Richards on Thu.



Sylvia Lem aka brionline plays on BBO periodically with Elaine Kari (ekari20). I'm also told that Sylvia plays in a casual game with Vincent Kwon, Satinder Jolly, and Daisy Lam! All the best Sylvia and Vincent, Satinder and Daisy.





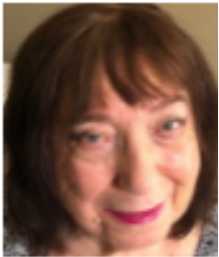
Players missed online continued...



Jennifer Emery and Brian Emery have been regular players in the RHBC Thu F2F game. They keep busy with grandchildren and they are going to 'start playing' on BBO, so we look forward to seeing them! Oh, yes they are husband and wife and like many others, partner at the bridge table!



Koji Kari aka kkari20 and Elain Kari and ekari20 are long-time RHBC players. Koji rarely plays in online club games, but he keeps busy playing casual and teaching his friends. The online games are just a little too long for Koji. Elaine plays with her "other" F2F partner, Sylvia Lem (aka brionline) in the occasional game. Oh, did you guess, Koji and Elaine are husband and wife!



Nada Dimitrievich has had one vaccine and will be fully vaccinated by the end of June! As you see, she is keeping safe and healthy. As Nada tells us "You might call me an eternal OPTIMIST, but I still believe that a way to play together might become possible in the future eventually and we sure hope she is right!! Nada sends a friendly hello to all the bridge friends of Richmond Hill bridge club.

Here are some updates on players, but are camera shy!!

Jean Hough has not been playing bridge online at all, she told us she is 'bored like everyone else' and it is doubtful she will return to the tables with her susceptibility to pneumonia. She is delighted to hear that everyone is well and that online bridge is available as an outlet. Jean is anxiously awaiting her second vaccine in June!

Nahid Pishna never complains of getting board. She is learning French and Spanish online, reads lots of books and plays solitaire online, and babysits her 3-year-old granddaughter. She is very busy and loves it! However, she is really, really looking forward to seeing everyone back in the club, face-to-face when we are allowed.

Ed and Vi Ignacz are waiting to play face-to-face. Vi tells us "I make do with reading and eating"! During the summer months, they will be supporting the Blue Jays, watching Golf, and any other sports that are available. They hope everyone is well and healthy and send a big hello to everyone!



A RETURN TO FACE-TO-FACE

We are asked about this every few days, discounting Claude who asks daily! There are clubs in the US and Canada that have reopened, but we are not there yet.

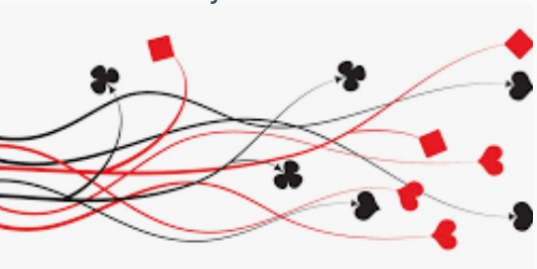
RHBC still has the dependencies of Angus Glen and the Town of Richmond Hill. We were told by Angus Glen “we do plan on reopening the senior’s programs, but do not see it happening before September”, so really no change here. The town of Richmond Hill is still on a wait-and-see.

Once we know that the facilities will reopen, we must put into place what our requirements and protocols for face-to-face to resume will be. We suspect some of these will be dictated to us by either the government or the facility themselves. For example; Will players be required to wear masks at all times? Will players be required to show proof of vaccination? We don’t have the answers yet, we are also in a ‘wait and see mode’, but we’d love to hear your thoughts on reopening.

What protocols do you want to see in place?
Will you return face-to-face?
What is the earliest you would consider returning?

New Games

We are thrilled to announce two new games – a Ladies Game on Tuesdays at 4:00 PM and an Open Game on Thursdays at 4:00 PM. Both games are 18 boards, 2 hours, 6 min boards, done in time for dinner, but lets you enjoy the afternoons if you are outdoors!



CLUB CORNER

RHBC is THRILLED to announce the addition of two individuals to our team! We’re adding two new directors, a husband-and-wife team, to help augment the workload; Dave and Cathy Tubb. They are long time players in our club, they direct F2F (face-to-face) and Dave continues to run a game for his friends. They are going to be our Wed game directors. Welcome Dave & Cathy.



David Tubb aka stouffdave Cathy Tubb aka stouffcath



GRAPEVINE - JUNE 2021



BRIDGE FLASHBACKS – March 1935

Marion Fox (aka blond head) came across some interesting bridge scorecards that belonged to her mother and she has kindly shared some of them, a true 'blast from the past', have a look!

International Contract Bridge Score March, 31 1935

TRICKS BID AND MADE. SCORE BELOW THE LINE.
 OVERTRICKS, PREMIUMS, AND ALL PENALTIES. SCORE ABOVE THE LINE

VALUE OF TRICKS
 BIDDING STARTS AT 7th TRICK
 A BID OF ONE CONTRACTS TO TAKE 7 TRICKS. TWO—8 TRICKS, etc.
 NO TRUMP, FIRST TRICK TAKEN. 40 ALL OTHERS 30.

♠ SPADES 30 — ♥ HEARTS 30 — ♦ DIAMONDS 20 — ♣ CLUBS 20
 GAME—100 POINTS BELOW THE LINE.

	NOT VULNERABLE		VULNERABLE	
	Not Dbl'd.	Doubled	Not Dbl'd.	Doubled
1 UNDER	50	100	100	200
2 "	100	300	200	500
3 "	150	500	300	800
4 "	200	700	400	1100
5 "	250	900	500	1400
6 "	300	1100	600	1700
7 "	350	1300	700	2000

PREMIUMS

OVERTRICKS EACH	NOT VULNERABLE		VULNERABLE	
	TRICK VALUE	100	TRICK VALUE	200
LITTLE SLAM	NOT VULNERABLE	500	VULNERABLE	750
GRAND SLAM	NOT VULNERABLE	1000	VULNERABLE	1500

A REDOUBLE DOUBLES THE DOUBLED VALUE
 TWO GAME RUBBER 700 THREE GAME RUBBER 500
 UNFINISHED RUBBER, SIDE HAVING ONE GAME 300
 SCORE FOR NON-RUBBER OR DUPLICATE CONTRACT
 Each Game in One Hand NOT VULNERABLE 300 VULNERABLE 500
 FOUR SUIT HONORS IN ONE HAND 100 FIVE 150
 FOUR ACES IN ONE HAND AT NO TRUMP BID 150

THE SIDE MAKING THE MOST POINTS AT THE CONCLUSION OF THE RUBBER (regardless of games) IS THE ACTUAL WINNER OF THE RUBBER.

AUCTION BRIDGE TABLE OF POINTS REVISED 1926

DECLARATION	♣	♦	♥	♠	NO TRUMP
EACH TRICK ABOVE 6	6	7	8	9	10
3 HONORS . .	30	30	30	30	30
4 " DIVIDED	40	40	40	40	40
4 " IN ONE HAND	80	80	80	80	100
5 " DIVIDED	50	50	50	50	-
5 " 4 IN ONE HAND	90	90	90	90	-
5 " IN ONE HAND	100	100	100	100	-

GAME IS 30 POINTS, RUBBER 250. GRAND SLAM 100, LITTLE SLAM 50. NOTHING CAN BE SCORED TOWARD GAME EXCEPT BY DECLARER'S SIDE. HONORS ALWAYS SCORED AS HELD. REVOKE PENALTY IS TWO TRICKS, TO BE TAKEN AT END OF HAND. FURTHER REVOKES BY SAME SIDE ONE TRICK. DEALER MAY PASS WITHOUT A BID. IF ALL FOUR PASS, DEAL GOES TO THE LEFT.

GAME OF FIVE HUNDRED AVONDALE SCHEDULE

IF TRUMPS ARE	6 TRICKS	7 TRICKS	8 TRICKS	9 TRICKS	10 TRICKS
SPADES . .	40	140	240	340	440
CLUBS . . .	60	160	260	360	460
DIAMONDS	80	180	280	380	480
HEARTS . .	100	200	300	400	500
NO TRUMP	120	220	320	420	520

BIDDER TAKING 10 TRICKS, SCORES 250 ON ANY BID OF LESS THAN 250. EACH TRICK COUNTS 10 TO WINNER OF IT.

NEXT ON DECK...

THE LONGEST DAY will be June 19-20 in the Virtual Clubs. Simply playing bridge during the event will raise funds, as sanction fees go directly to the Alzheimer Society of Canada. In return, you'll earn 2X the Regular Club Black Points

STARDUST WEEK COMING IN JULY – More points, July 26 – August 1, 2021, more to come!