

## Play It Again!

Both BridgeWebs and RealBridge have facilities that enable you to replay card-by-card the bidding and tricks of a hand. You can also investigate alternate lines of play with double-dummy guidance.

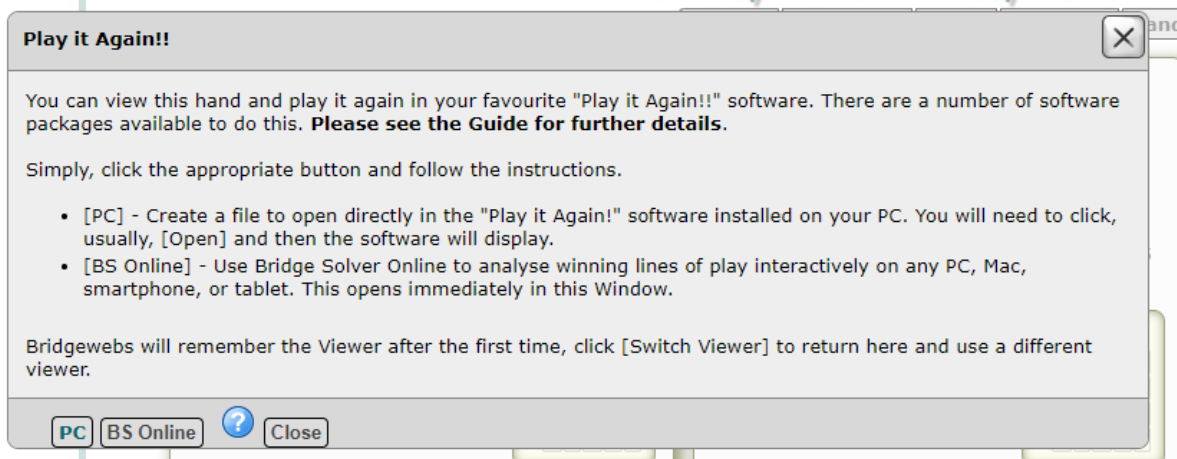
## BridgeWebs

This option is accessed through the **Replay** buttons on the right- hand side of the traveller.

Board: 1 - Dealer: North - Vul: None												
Pairs		Contract		Score		Points		%				
N/SE/W	Bid	By	Ld	Tks	N/SE/W	N/SE/W	N/SE/W	N/SE/W	N/SE/W	N/SE/W		Replay
1	2	3NT	W	♥J	9	400	11	5	68	31		Replay
3	4	3NT	W	♣J	11	460	3	13	18	81		Replay
5	6	3NT	W	♥J	11	460	3	13	18	81		Replay
7	8	3NT	W	♦2	9	400	11	5	68	31		Replay
9	10	3NT	W	♦2	9	400	11	5	68	31		Replay
11	12	3NT	W	♣9	11	460	3	13	18	81		Replay

It available from either **your personal score card** or the **Travellers screen**. Click **Replay** to launch the analysis tool.

The very first time you do this you may get a pop-up window:



Unless you have hand-analysis software installed on your device, select **BS Online** which is the free tool built into the website.

**Bridge Solver Online**

6th November 2020 - Friday Pairs on RealBridge

N: jenny tookey  
S: Joan Kemble  
E: Linda Brooks  
W: David Brooks

**Optimum:**  
NS 6D, NS 6C; +920  
LoTT: 17-16 = 1

♠ 10  
♥ A K Q  
♦ K Q J 10  
♣ K J 10 9 6

W	N	E	S
Pass	1C	Pass	1S
Pass	3N	Pass	Pass

Play: 3N+2 by N    Help  
NS: 50.00%    EW: 50.00%

♠ K 9 5  
♥ J 10 7 4  
♦ 9 6 4  
♣ Q 3 2

1

♠ A J 8 4  
♥ 8 5 3 2  
♦ 8 5 2  
♣ 5 4

♠ Q 7 6 3 2  
♥ 9 6  
♦ A 7 3  
♣ A 8 7

	♣	♦	♥	♠	NT
N	6	6	2	3	4
S	6	6	2	3	4
E	-	-	-	-	-
W	-	-	-	-	-

6    19    5  
6    10

Edit    Play    Options    Help    Analyse

The top left of the window shows the players.

The bidding is shown top right. In this example, the EW pair played the contract in 4S making 11 tricks. This result is shown in the button underneath the bidding box, together with the percentage scored on the board.

To review the hand as it was played by West, click on the button labelled "Play: 4S+1 by W". While doing this, you can also choose a different card at any point.

To try out other lines of play on this hand, use the "Play" button at the bottom. These lines are down to you and do not reflect how the board was played at the table.

## RealBridge

This is an amazing facility that will let you see exactly how each card played affected the final result! Note: it's only available for events that were played on RealBridge!

To access the results on the RealBridge website, use the link on our Results page:



★★★★★ **Switch to 2022 Edition** ?  
**21st February 2023 - Tuesday Pairs Online**


Ranking Scorecards Matrix Travellers Hands **RealBridge**


**Harpenden Tuesday Feb 21st**

Pos	No	Players	Match Points	Score %	Master Points	Small Slams	Grand Slams
North / South							

Once there, in the Scores window, navigate to the view of the bidding and play on a board that has already been played. You can do this by clicking on a result, either from a traveller or from a personal scorecard.

To view double-dummy analysis, click the DDS button, just above the Board, Contract and Declarer:



× **DDS**  ♠ K

Bd 1, Dlr N ♥ J10653

5♦ X-2 S ♦ 109876

W A Player ♣ 85

For full details, please refer to: <https://realbridge.online/double-dummy-and-explore-play.html>