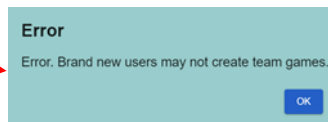


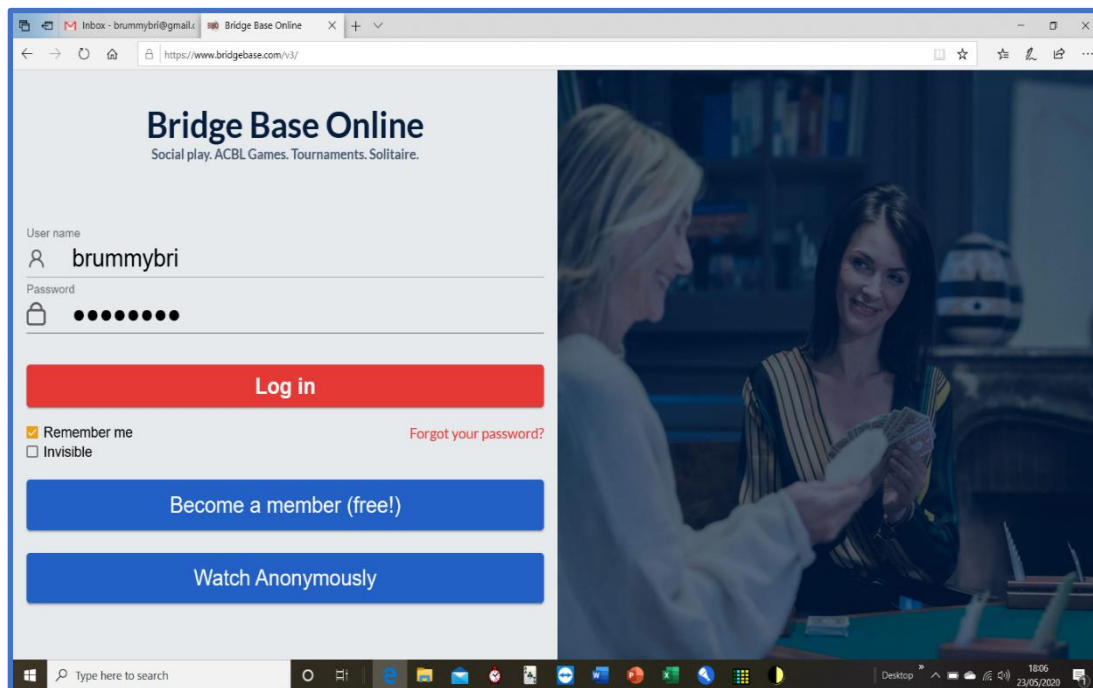
# How to Create a Team Match

NB: BBO requirements to be able to create a team match:

1. 100+ Logins
2. Been a member more than 2 weeks.-



## Navigate to the BBO



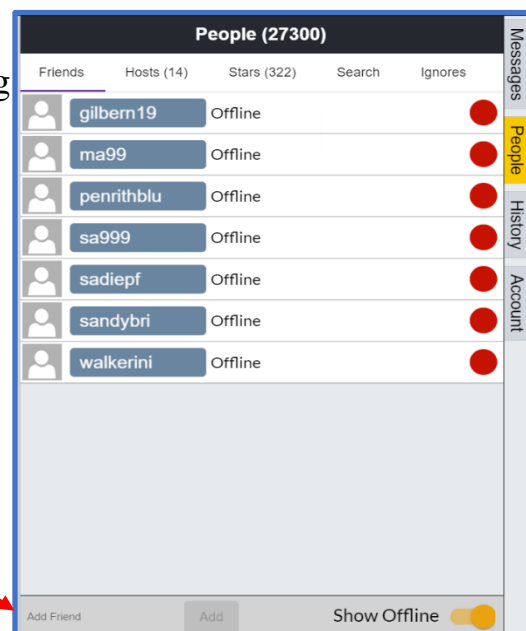
login page, and Logon

Navigate to the 'People' Tab, and ADD ALL other 7 players to your Friends List:

You will need to know they are 'ONLINE' before Creating  
you will have to CREATE it again.

**All 8 players required.**

Add Friends Here:  
Type in username  
and click Add



and

The Match will take place over TWO sessions of 12 Boards Each, one played immediately after the other. (24 Boards in total.)

Play 12 Boards, swap one Pair over within Team 2, (move players from NS to EW) and play a further 12 Boards.

Click Competitive, then, Team Matches

Bridge Base Online Home

PLAY OR WATCH BRIDGE

Solitaire

Competitive

BBO Prime **New**

Casual

Practice

FEATURED AREAS

ACBL World

Robot World

Virtual Clubs

Challenges

Instant Tournaments

Back Home **Competitive**

TOURNAMENTS

ACBL Masterpoint Tournaments

BBO Points Tournaments

Robot Tournaments

Free Tournaments

ACBL Virtual Clubs

All Tournaments

OTHER COMPETITIVE GAMES

Team Matches

Challenges

Messages

News Chat Mail

EBU Tournaments every day

Weekly Highlights: May 17-23

Video: Csaba and Eli play together with dual commentary

Video: Bermuda Bowl Challenge #6. With Pete Hollands

BBF: The Bridge World website

BBF: IMPs scoring does not match History

Award symbol: 2  
Masterpoints: 1.19  
BB\$ Balance: 0.25

Pending Team Matches are displayed

Team Matches

Pending Running Search Clear

bennrom #3637 Teams Untitled  
10 Boards - IMPs

Table 1  
1 Kibitzers

cvr qqbel SCB60

ubolt

Table 2  
0 Kibitzers

bennrom Kartelin

velli Sit!

ssuaatt #3689 Teams suat  
4 Boards - IMPs

Table 1  
1 Kibitzers

Sit! Sit!

Table 2  
0 Kibitzers

Create Team Match

Select 'Create Team Match'

Messages

News Chat Mail

EBU Tournaments every day

Weekly Highlights: May 17-23

Video: Csaba and Eli play together with dual commentary

Video: Bermuda Bowl Challenge #6. With Pete Hollands

BBF: The Bridge World website

BBF: IMPs scoring does not match History

Create Team Match

Identification Options Reserve seats

Identification

Title  
WTL - Division 1

Description  
+private+ 02-06-2020

Team 1  
Brian Smith

Team 2  
Mike Rothwell

Create Team Match Close

Do not click create match yet – click Options Tab

## 1 - IDENTIFICATION TAB

Key a Title *Cumbria Championship Teams*

Key a Description - +private+ & Today's Date

Key Team 1 - *Captain's Name*

Key Team 2 - *Captain's Name*

Select 'Options' Tab

Lower case!

+private+

stops others  
trying to join  
the game

## 2 - OPTIONS TAB

Choose:

IMPs

Use Random Deals

‘12’ Boards

Allow Undos

Uncheck ALL others

**Create Team Match**

Identification Options Reserve seats

**Form of scoring**

☒ IMPs  
☐ Board-A-Match  
☐ Total points  
Number of Boards  
12

**Deal source**

☒ Use random deals  
☐ Use saved deals  
Select folder

**Options**

☐ Allow kibitzers  
☐ Allow kibitzers to chat with players  
☒ Allow Undos  
☐ Barometer scoring

Create Team Match Close

### WARNING

Ensure the "barometer scoring" box is unchecked. If it isn't all the players will be able to see what is simultaneously going on at the other table – Not Good.

Do not click create match yet – click Reserve Seats Tab

## 3 - RESERVE SEATS

Type in the 8 players user names,

Seated in their Teams – DO NOT SWAP THEM OVER

Select  
'Create Team Match'

**Create Team Match**

Identification Options Reserve seats

**Reserve seats (optional)**

brian

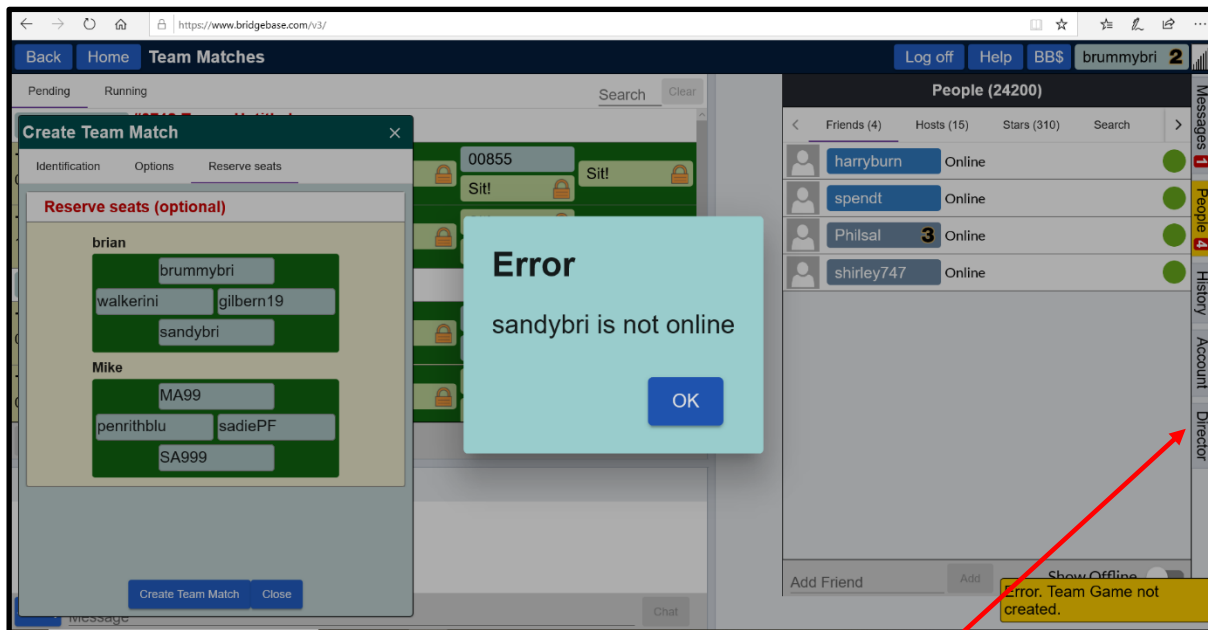
brummybri  
walkerini gilbern19  
sandybri

Mike

MA99  
penrithblu sadiePF  
SA999

Create Team Match Close

You need to ensure ALL 8 players are logged on and NOT on the CASUAL server, before you press 'Create Team Game'. If someone is not online – you will have to create it again.



Notice also, the Directors Tab appears. It is recommended that the only option used is the 'Cancel Tournament' in an emergency.

- Teams WTL - Division 1
- Show Tables
  - Edit Team Match
  - Substitutes
  - Reseat player
  - Adjust Score
  - Tournament Status
  - Chat→Tournament
  - Cancel Tournament

At the end of the match, the result will appear in the 'History' Tab – Recent Tournaments

History					
My Table		Recent hands		Recent tournaments	
#	Title	Score	Rank	Maste	Prize
6493	#6493 Teams WTL	-29.00 IMP	2		
6112	#6112 Teams WTL	-34.00 IMP	2		
5487	#5487 Teams WTL	0.00 IMPs	1		
5270	#5270 Teams WTL	1.00 IMPs	1		
4707	#4707 Teams WTL	50.17%	1		

NB: These results may not come through instantly.

The Second Half can now be set up, when both Teams have finished.

Set up the second half. Remember to SWAP pairs over in ONE team.

### 1<sup>st</sup> Half

Repeat the procedure for setting up a match.

Remember to SWAP over one Pair, in ONE Team only.

(maintain the 2 separate teams)

### 2<sup>nd</sup> Half

Within the 2<sup>nd</sup> Team, change NS to EW and EW to NS

The Final Score can be found in the Hand Records on the Home Page. This may not be instant, please be patient. In fact, this can take a few hours to come through!

Results can be found here: <http://www.bridgebase.com/myhands/>  
(See script – 'Play a Team Match' for further information).

Calculate the total IMPS for the Two Matches.