

Stolen Bid (Over Your 1NT Bid)



Tom Snow
(805) 305-5035
coinerbop@gmail.com

Time for a Joke

Mildred, the church gossip and self-appointed monitor of the church's morals, kept sticking her nose into other people's business. Several members did not approve of her activities but feared her enough to maintain their silence.

She made a mistake, however, when she accused Frank, a new member, of being an alcoholic, after she saw his pickup parked in front of the town's bar one day.

She emphatically told Frank (and several others) that everyone seeing it there would know what he was doing! Frank, a man of few words, stared at her for a moment and just turned and walked away. He didn't explain, defend, or deny. He said nothing.

Later that evening, Frank quietly parked his pickup in front of Mildred's house ... walked home ... and left it there all night.

You gotta love Frank!

The easiest and simplest solution:

Stolen Bid (Over Your 1NT)



Now that opponents are using Cappelletti or DONT over your 1NT, you can use Stolen Bid to handle the interference:

A) If they double over your 1NT:

- 1) Ignore the double (Systems on). 2C = Stayman, 2D = transfer to 2H, etc.
- 2) Use redouble to show a long minor. Opener bids 2C. Responder may correct (2D).

B) If they bid 2C over your 1NT:

- 1) Double is Stayman (Stolen Bid) asking for a 4-card major.
- 2) Otherwise, ignore the 2C bid (2D = transfer to 2H, 2H = transfer to 2S, etc.).

C) If they bid 2D or higher over your 1NT:

- 1) Abandon Stayman and Transfers; bid naturally. A double is not penalties or a transfer to ♥'s. It just says, "I have enough values to compete, but no clear call."
- 1) New suits = natural (5+) and drop dead.

♠AJ93 ♥K42 ♦43 ♣10952

Dbf

♠K9532 ♥42 ♦QJ63 ♣52

2S

Playing a double this way is much more efficient.

Compete. All you need for Stayman now is 5+ HCPs.

Using Stolen Bid

What do you call a monkey in a landmine?



1)

South

<u>North</u>	<u>East</u>	<u>South</u>	<u>West</u>
1NT	Dbl*	???	

♠Q732 ♥KJ32 ♦J872 ♣7

Bid 2C* (Stayman)

2)

South

<u>North</u>	<u>East</u>	<u>South</u>	<u>West</u>
1NT	2C*	???	

♠KQ72 ♥7432 ♦J872 ♣7

Dbl*

3)

South

<u>North</u>	<u>East</u>	<u>South</u>	<u>West</u>
1NT	2D	???	

♠Q972 ♥KJ42 ♦J97 ♣43

Dbl*

And pass partner's response. A redouble would transfer partner to 2C so you can get out in a long minor.

Stayman. They stole my bid. Pass partner's response.

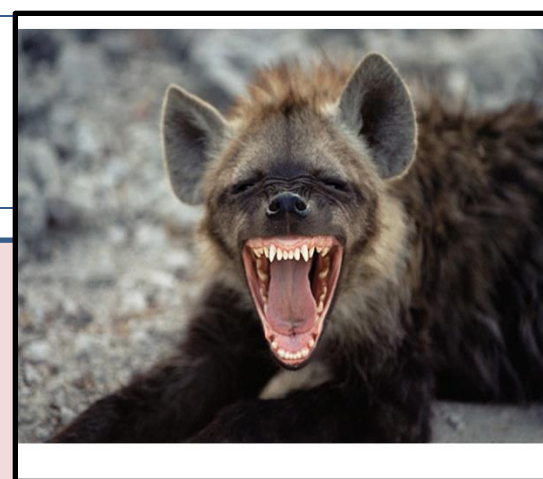
You have enough to compete but no clear call.

Time for Another Joke

There I was:

Sitting in a recliner
naked watching a movie
eating ice cream &
Doritos minding my own
business,
& Walmart calls the
Cops

Using Stolen Bid (Con't)



1)

<u>North</u>	<u>East</u>	<u>South</u>	<u>West</u>
1NT	Dbl	???	

South

♠987632 ♥432 ♦J32 ♣9

2H* (transfer to 2S)

Then pass partner's 2S bid.

2)

<u>North</u>	<u>East</u>	<u>South</u>	<u>West</u>
1NT	Dbl	???	

South

♠72 ♥32 ♦J98652 ♣984

Redbl* - transferring partner to 2C.

Then bid 2D (to play) over his 2C bid.

3)

<u>North</u>	<u>East</u>	<u>South</u>	<u>West</u>
1NT	2H*	???	

South

♠QJ972 ♥K4 ♦973 ♣643

2S (to play)

A double is take-out with 4-card suits.

Playtime

