

2/1 Game Forcing – The Low Road Bidding the Bad Hands



Tom Snow
(805) 305-5035
coinerbop@gmail.com

Time for a Joke

Hung Chow calls in to work and says, “Hey, boss I not come work today; I really sick. I got headache, stomach ache and my legs hurt. I not come work.”

The boss says, “You know Hung Chow, I really need you today. When I feel like this I go to my wife and tell her to give me sex. Makes everything better and I can go to work. You try.”

Two hours later Hung Chow calls again: “Boss, I do what you say, and I feel great. I be at work soon. You got nice house.”

Possible Low Road Auctions



In 2/1 GF, there are only 4 possible starts to LOW ROAD auctions:

1) 1S Pass 1NT*

2) 1H Pass 1NT*

3) Pass 1S Pass 1NT*

4) Pass 1H Pass 1NT*

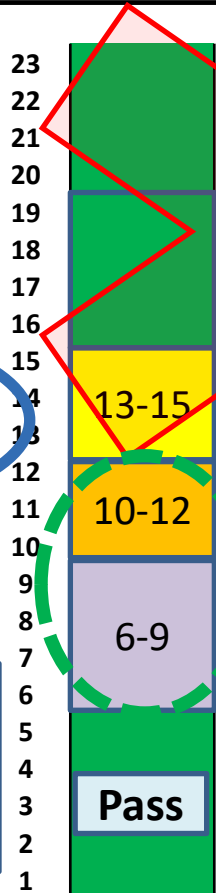
REMINDER:

3NT needs 26 HCPs
 4♥ and 4♠ need 26 HCPs

Responder Taking the Low Road



Responder Ranges:



Going to game. Take the HIGH ROAD. Bid 2 of a new suit.

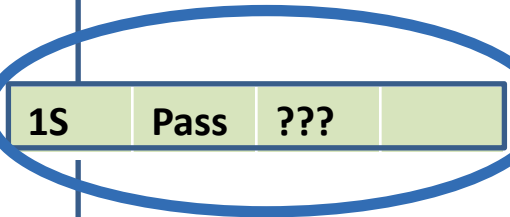
Take the LOW ROAD. Bid 1NT*.

To cover when opener has 15-17 HCPs.

Then make a forward-going rebid.

Then make a weak rebid.

10-12
 6-9
 Opting for a 5-2 major suit fit is often the safest.



1S - 3S Shows 10-11 HCPs with 4 trumps.

Shows 10-11 HCPs with 3-card spade support.

Forward-going Rebids

1S 1NT* 2C 3C	1S 1NT* 2D 2NT	1S 1NT* 2S 3S
1S 1NT* 2D 3S*	1S 1NT* 2C 3H	1H 1NT* 2D 2S*

*The Impossible Spade.

Weak Rebids

1S 1NT* 2C Pass	1S 1NT* 2D 2H
1S 1NT* 2D 2S	1S 1NT* 2S Pass

Invitational and 6-9 HCP Hands



Old Fashion Method:

2D

	North	East	South	West
		1S	Pass	???
West	♠93 ♥Q42 ♦AKJ1073 ♣96			

You're left in no man's land. Are we going to game? How do we find out?

2 Over 1 GF:

1NT*

	North	East	South	West
		1S	Pass	???
West	♠93 ♥Q42 ♦AKJ1073 ♣96			

Partner must bid again, then you would bid your diamonds.

Either Method:

2S

	North	East	South	West
		1S	Pass	???
West	♠AQ3 ♥32 ♦J1073 ♣9762			

Partner can pass.

Either Method:

1NT

	North	East	South	West
		1S	Pass	???
West	♠93 ♥32 ♦A107653 ♣K32			

But partner can't pass if playing 2/1 GF.

NB:

North	East	South	West
Pass	Pass	1S	Pass
1NT**			

** This 1NT is not forcing, if you are a passed hand.

Responder Showing an Invitational vs. a Minimum Hand



Responder's jump raise after 1NT shows 10-11 HCP's and 3-card support.

Can be a 3-card suit.

1)

	North	East	South	West
	1H	Pass	1NT*	Pass
3H*	2D*	Pass	???	
South	♠A4 ♥K42 ♦K83 ♣98753			
South	♠A4 ♥K742 ♦K83 ♣9873			

2)

	North	East	South	West
	1H	Pass	1NT*	Pass
2H	2D*	Pass	???	
South	♠A94 ♥K2 ♦8632 ♣9873			

With 4-card support, South bids 3H over 1H.

Shows 2-card support and 6-9 HCPs.

3)

	North	East	South	West
	1H	Pass	1NT*	Pass
3D	2D*	Pass	???	
South	♠A4 ♥2 ♦KQ973 ♣J10753			

4)

	North	East	South	West
	1H	Pass	1NT*	Pass
3D	2C*	Pass	???	
South	♠A94 ♥5 ♦KQJ10962 ♣93			

The jump shows long diamonds and 10-11 HCPs.

5)

	North	East	South	West
	1H	Pass	1NT*	Pass
2NT	2D*	Pass	???	
South	♠AJ4 ♥82 ♦83 ♣KQ10765			

6)

	North	East	South	West
	1S	Pass	1NT*	Pass
2H	2D	Pass	???	
South	♠4 ♥KJ107642 ♦82 ♣973			

Opener should pass, even with a ♥ void.

Time for More Jokes

I heard a report about a bad outbreak of the tummy bug. Apparently 9 out of 10 people there suffered from diarrhea.

I can't stop thinking about that tenth person who apparently enjoyed it.

A man goes to the lawyer: "What is your fee?"

Lawyer says: "1000 US dollars for 3 questions."

Man: "Wow - so much! Isn't it a bit expensive?"

Lawyer: "Yes, what is your third question?"

My boss told me that I don't know my boundaries so, I fired him.

Hand #1

With 3 clubs and 3D, opener should rebid 2C.

South takes the Low Road.



<u>North</u>	<u>East</u>	<u>South</u>	<u>West</u>
1H	Pass	1NT*	Pass
2C	Pass	Pass	Pass

North
 ♠ 76
 ♥ AKJ63
 ♦ K93
 ♣ Q84

This may be only a 4-3 club fit, but it's safe. No game is likely if opener can't jump shift.

West
 ♠ Q853
 ♥ 985
 ♦ AJ7
 ♣ A63

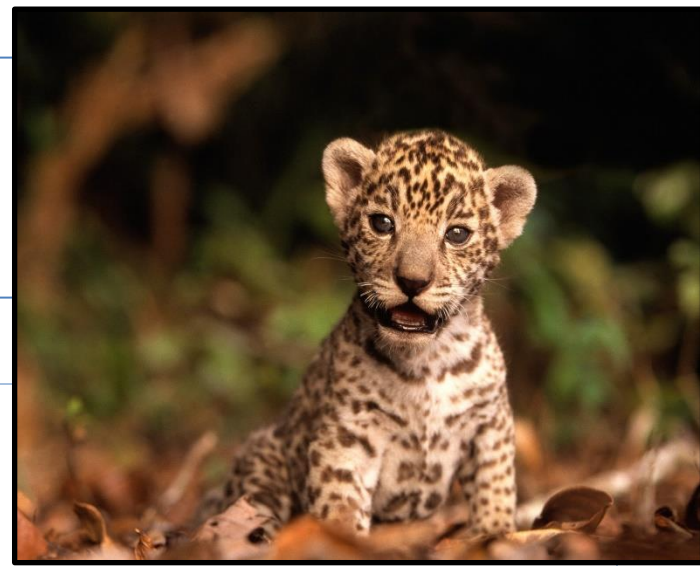
If West balances (with a double), he gets lucky and finds an 8-card fit in spades.

East
 ♠ AK109
 ♥ Q1072
 ♦ 105
 ♣ 1095

South
 ♠ J42
 ♥ 4
 ♦ Q8642
 ♣ KJ72

N/S makes 2C or 2D.
 E/W makes 2S.

Hand #2



<u>North</u>	<u>East</u>	<u>South</u>	<u>West</u>
1S	Pass	1NT*	Pass
2H	Pass	3C	Pass
Pass	Pass		

Responder wants to be left alone in his suit (for entries and extra tricks in clubs).

West
♠ A53
♥ 985
♦ A10754
♣ Q9

North
♠ KQJ76
♥ AJ63
♦ K6
♣ 43

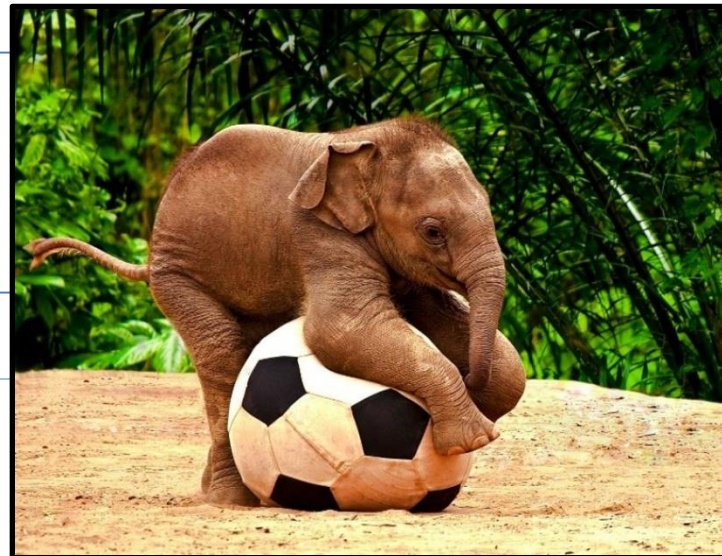
East
♠ 10984
♥ K1072
♦ J32
♣ AJ

South
♠ 2
♥ Q4
♦ Q98
♣ K1087652

N/S makes 3C.

E/W makes 1D.

Hand #3



<u>North</u>	<u>East</u>	<u>South</u>	<u>West</u>
		1S	Pass
1NT*	Pass	2C	Pass
2S	Pass	Pass	Pass

North
♠ 76
♥ A863
♦ K7642
♣ 83

West
♠ A53
♥ 1095
♦ A1098
♣ 965

East
♠ 1084
♥ KJ72
♦ J3
♣ AQJ4

The most N/S has is a total of 24 HCPs, so run to known safety in 2S. If partner had 4 hearts, he would've rebid 2H.

South
♠ KQJ92
♥ Q4
♦ Q5
♣ K1072

N/S makes 2S.

E/W makes nothing.

Did anyone find a 2S bid (Michaels Cue Bid) with the West hand over 1S? You are also cold for a game – often the case with double fits.

Hand #4



<u>North</u>	<u>East</u>	<u>South</u>	<u>West</u>
		1S	Pass
1NT*	Pass	2C	Pass
4S	Pass		

North
 ♠ K876
 ♥ 6
 ♦ 64
 ♣ AQ10763

East
 ♠ 104
 ♥ AK1043
 ♦ QJ8
 ♣ 984

West
 ♠ 53
 ♥ J9872
 ♦ AK1092
 ♣ 5

South
 ♠ AQJ92
 ♥ Q5
 ♦ 753
 ♣ KJ2

When in doubt, take the Low Road.

North was going to jump to 3S to invite, but look at his secondary source of tricks (clubs)! Double fits play really well. Partner will know he's stretching because he took the Low Road.

N/S makes 4S.

E/W makes 4H. 5H (and maybe 6H if NVul) is a good sacrifice.

Hand #5



West must pass the 1st round, but did anyone find a take-out double over 2C the 2nd round?

<u>North</u>	<u>East</u>	<u>South</u>	<u>West</u>
		1S	Pass
1NT*	Pass	2C	Pass
3C	Pass	Pass	Pass

North raises clubs in case South has 16-17 HCPs.

West
 ♠ K1053
 ♥ Q872
 ♦ AQJ10
 ♣ 5

North
 ♠ 8
 ♥ AJ3
 ♦ 6542
 ♣ KJ973

East
 ♠ 764
 ♥ 10964
 ♦ K98
 ♣ A64

South
 ♠ AQJ92
 ♥ K5
 ♦ 73
 ♣ Q1082

N/S makes 4C.

E/W makes 2H or 2D.

Hand #6



<u>North</u>	<u>East</u>	<u>South</u>	<u>West</u>
		1S	Pass
1NT*	Pass	2C	Pass
2NT	Pass	Pass	Pass

North invites to game in No Trump.

West

♠ K1053
♥ AJ72
♦ 986
♣ 75

North

♠ 8
♥ Q1083
♦ KQ1042
♣ A93

East

♠ 964
♥ 964
♦ AJ5
♣ KJ64

On defense, East should duck the 1st diamond played!

South

♠ AQJ72
♥ K5
♦ 73
♣ Q1082

N/S makes 2NT.

E/W makes nothing.

Hand #7



<u>North</u>	<u>East</u>	<u>South</u>	<u>West</u>
		1S	Pass
1NT*	Pass	2C	Pass
3H	Pass	Pass	Pass

North invites to game in hearts.

West

♠ K1053
♥ J2
♦ AJ9
♣ J875

North

♠ 8
♥ KQ10873
♦ Q642
♣ A3

East

♠ 964
♥ A964
♦ 875
♣ Q96

South

♠ AQJ72
♥ 5
♦ K103
♣ K1042

N/S makes 3H.

E/W makes nothing.

Playtime

