

RealBridge Player Guide

Revised 16 November 2020

At the table

When you arrive at the table, you will be able to see and talk to the other players. After the Director starts the first round, you will see your hand. When it is your turn to bid, a bidding box will be shown in the middle of the table.

These are the main elements of the screen:



During the auction

Making a bid

To bid, simply click the bidding card. If you are using one-click mode, the bid will be made and will appear in front of you, just as when you bid in face-to-face bridge.

If you are using two-tap mode (see *Settings* below) the bidding card is selected, and all the other bidding cards disappear. If the bid you wanted is shown, click it again to confirm the bid; if you had clicked the wrong bid, click somewhere else on the table to bring the bidding box back.

Alerts and explanations

The standard way of alerting in RealBridge is as in face-to-face bridge. When your partner makes a conventional bid, you click your alert card. The Alert

card will briefly be displayed against partner's bid. Partner's bidding card will change colour to indicate that it has been alerted.

Explanations are as in face-to-face bridge too. An opponent asks you what the bid means by speaking, and you explain by speaking.

RealBridge also allows "self alerts" and written explanations. This option will be explained in the *Self alerts* section in a subsequent edition of this guide.

Undos

If you make a misclick, and if the rules of the event allow undos, click the **Undo** button. Each opponent will be prompted to accept or reject the undo. If they accept it, the bidding goes back to before your last call. If they don't accept it, you will see a message saying this.

If there is any doubt or disagreement about whether an undo should be allowed, call the Director. The Director will be able to adjudicate according to the rules of the event.

During the play

When play starts, dummy appears on the table. The cards played to each trick are shown in the middle of the table. Some more buttons now become relevant:



Playing a card

To play, simply click the card you want to play. If you are using one-click mode, the card will be played and will appear in the middle of the table.

If you are using two-tap mode (see *Settings* below) the card is moved partly out of your hand. To confirm the play, click anywhere in the bottom half of the table. To change the card, click somewhere else (for example, in your hand). When you first start using two-tap mode, RealBridge shows you the area to click to confirm a play. You can hide this by clicking the **Hide** button.

Claims

Either declarer or a defender can claim some or all of the remaining tricks. Click the **Claim** button, then select the number of tricks that you are claiming. Just as in face-to-face bridge, you should state your line of play at the same time as your claim.

After you have claimed as declarer, both defenders are prompted to accept or reject your claim. If they both accept, the result is recorded and the deal ends. If either defender rejects the claim, the platform displays a message saying that the claim has been rejected. After a rejection, you should call the director to adjudicate the claim, or claim again (perhaps for a different number of tricks), or if everyone agrees you can also play on.

If a defender claims, both declarer and the other defender are prompted to accept or reject the claim. (This is because a defender is allowed under Law 68B2 to object to his partner's claim.)

If play continues after a claim, the non-claiming side can see all four hands.

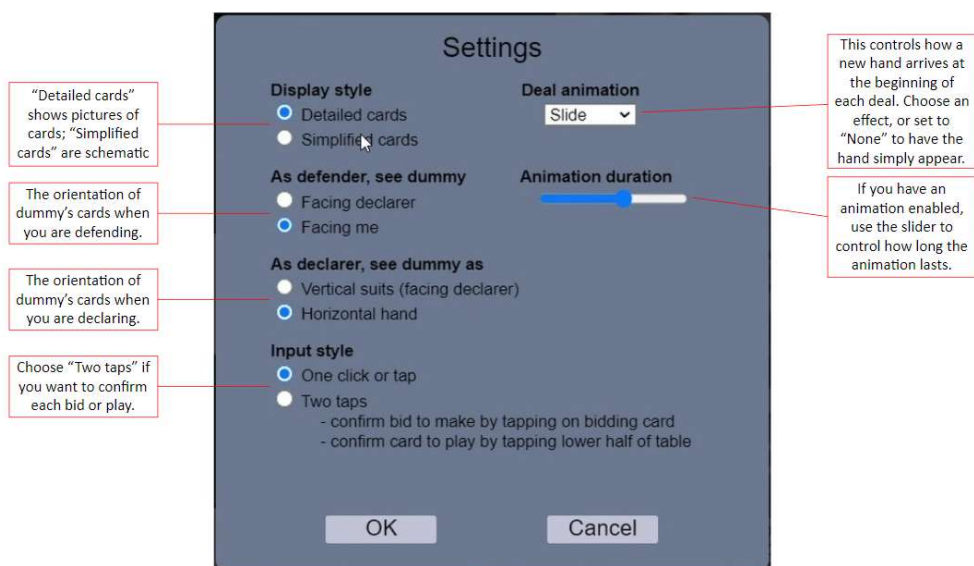
Undos

Undos in the play work in the same way as undos in the bidding. If an undo is accepted, the play goes back to before your last play.

Again, if there is any doubt or disagreement about whether an undo should be allowed, call the Director.

Settings

If you click the **Settings** icon, you will see various options for controlling the appearance and functionality of the screen:



Notes

- If you change your settings, Realbridge will remember them for the next time that you play, as long as you are using the same computer and web-browser.
- With simplified cards, dummy is always oriented to face you.

Recommendations

- If you are using a tablet, you may find it easier to use simplified cards and/or two-tap mode.
- Try the different options and choose a configuration that you like.

Audio and video controls

The screen also contains some buttons for controlling audio and video:



The director

You can call the Director by clicking the **Director** button. When the Director is at the table, you will see him in the top left-hand corner of the screen. You can see and talk to him just like with the other players.

