

Bridge Base Online (BBO)

Guidance for Briter Bridge Club2 Members

BBO can be used in a number of different ways. These notes are aimed at helping members set up social games with members of the club or other bridge friends. There are some links included for those wishing further assistance.

BBO looks different depending on how you are using it – on a laptop or on a tablet or using different browsers. So screenshots may not always resemble what you are seeing.

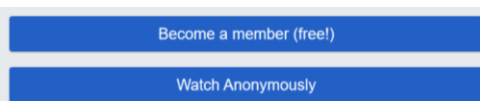
Getting started (registering and preliminaries)

If using a lap or desk top computer go to <https://www.bridgebase.com/> and click on [join the community](#), then [become a member](#) and you should see the following screen. Make up a user name (max 10 characters : **tip: spaces in the name can cause confusion**) and add a password, email address, your real name (optional but it helps others when playing at a club), skill level and country. Leave ACBL number field blank.

The screenshot shows a mobile registration form titled "Become a member (free!)". It contains the following fields and options:

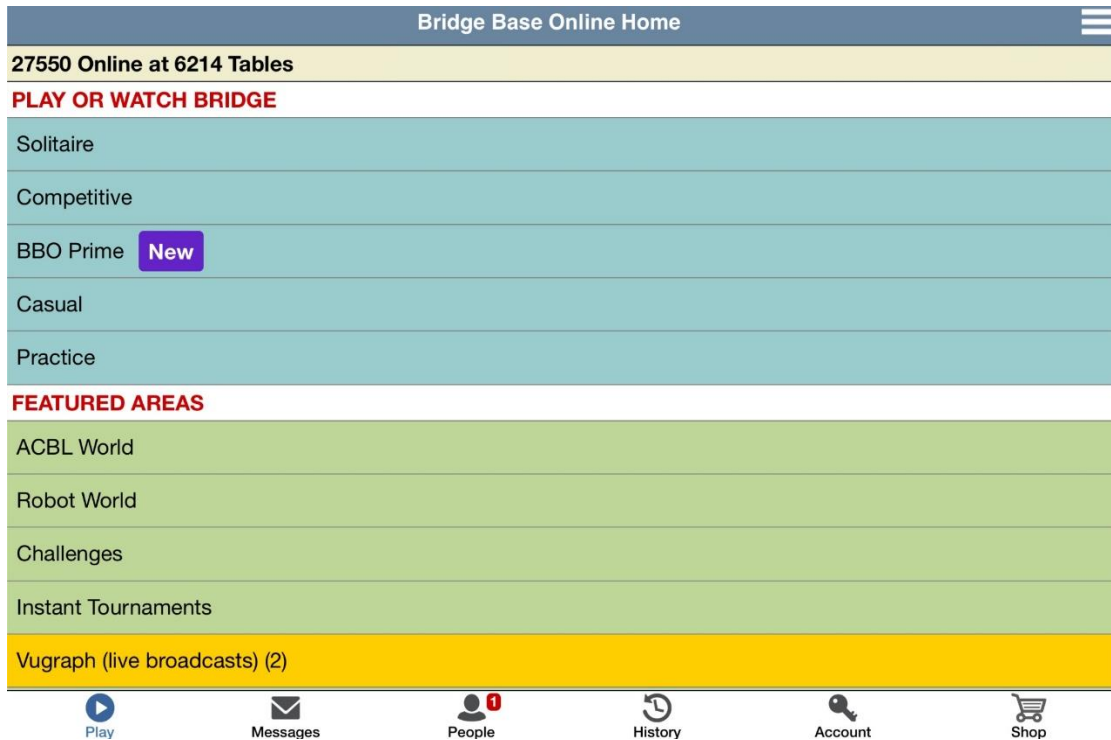
- Username:** Briter (Available), Max 10 characters, 6/10.
- Password:** (Required), Max 10 characters, 10/10.
- Confirm password:** (Required), Max 10 characters, 10/10.
- Email address:** nond@cards.co.uk (Required), Max 10 characters, 10/10.
- Real name:** Diamond Geezer.
- ACBL Number:** (Blank).
- Other:** (Blank).
- Skill Level:** Private, Novice, Beginner, Intermediate (selected), Advanced, Expert, World Class.
- Country:** Czech Republic, Denmark, Dominican Republic, Ecuador, Egypt, England (selected), Equatorial Guinea.
- I agree to the [Terms of Service](#).
- Register** button.

If you are using a tablet search for and download the BBO app and when you open it you will get a screen with the following right at the bottom;

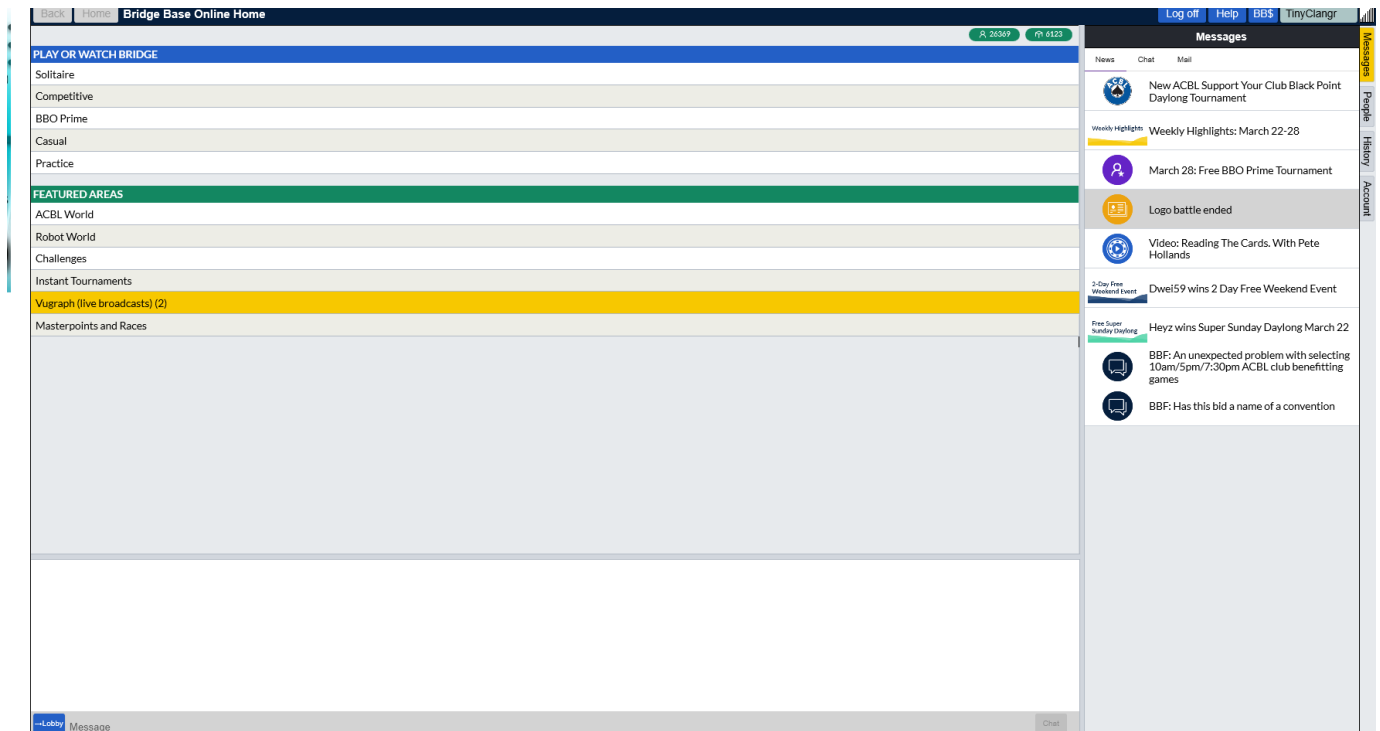


Press [become a member](#) to get the registration page.

When you have registered you will be automatically logged on. If you are using an ipad you will see a screen like this:



If you are using a laptop or desktop you will see a screen like this:



The main difference is the location of the tabs which are on the top right of the desktop screen and along the bottom of the i-pad screen. **Tip: make sure you regularly check that you have the latest version of the app**

Before starting to play you will need to **add your friends** and you may need a convention card. On the desktop click on the **people** tab and it will show you if any of your friends are currently playing (at the top of the column) and allow you to add friends (at the bottom of the column). You add friends by typing in their user name and pressing enter. You can also befriend someone by looking at their profile whilst playing and choosing “follow” from the drop down menu. If you want a list of your friends press people and “show offline” and it will show the user names of all those you have added as friends and whether they are logged in, playing or offline.

To find out someone’s user name you can log into the Briter Bridge website and check the member list, which now has a column marked “BBO name”. In order to add your BBO name to the list you can log in and go to your account, add your user name and save the information. If you want me to add in for you please email me (jan.titcombe@ntlworld.com). Obviously not many people have done this yet so to start with you will have to contact members to ask if they are registered and, if so, what their user name is.

If you are going to join in games with players across the world it is useful to have a **convention card** as many overseas players do not play ACOL. Press the account tab and then the convention tab. Most of you will need to choose “simple modern ACOL”. You can edit this and associate each version with a different partner if you wish. There is an AcOL Players’ Bridge Club if you want to watch or join in any of the games choose casual/all public and private clubs/Acol Players’ Bridge Club and it will show tables with vacant places.

Playing a game

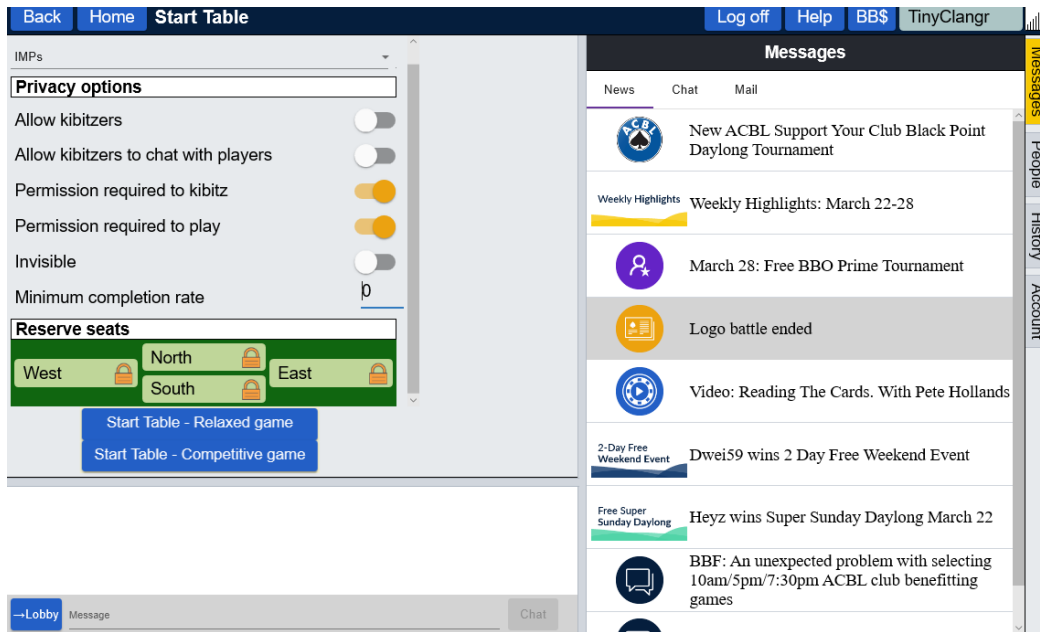
You may want to **watch** some games first just to get the hang of things. In which case choose **casual** from the home page and then **take me to an interesting table**.

To **set up a game** with four friends. One of you needs to set up the table and the other three need to log on press **casual** and just wait to be invited. **Tip: keep a mobile phone handy until the table is set up so you can communicate with each other if things don’t go quite as expected – once the table is up and running the BBO rules don’t allow you to communicate in any way other than by chatting on the system.** The host setting the table up should:

Choose **casual** from home page **Tip: this takes you to another server and there should be a pause whilst it connects you**

Choose start a table

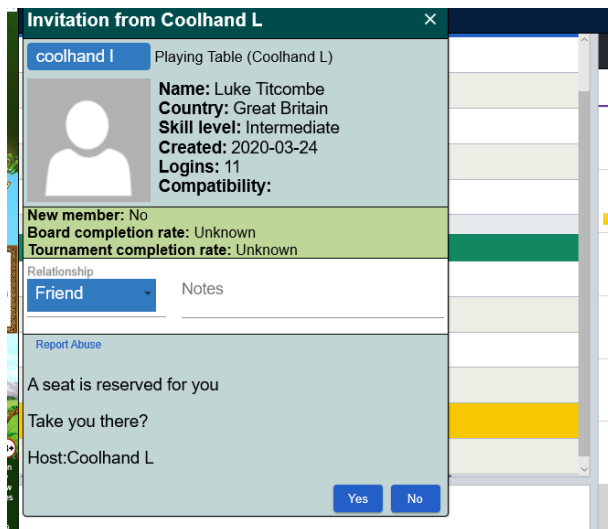
You will see the following screen:



The top drop down menu allows you to check the type of scoring: IMPs or Matchpoints are the most commonly used.

Set the privacy options. Permission required to play needs to be turned on (yellow) if you only want specific people to join the table.

Type all four user names in to the North, South, East and West boxes. Click the **Start table – relaxed game** box. On the box with your name you need to click again and choose **sit**. The other three players will receive invitations to play:



The invitation may appear in a different place depending on the platform you are using and doesn't stay on screen for very long. On some tablets the acceptance button is below the bottom of the screen when

in landscape mode. If you miss seeing it don't panic – text the host and ask them to invite you again or follow the procedure below.

If you are playing with friends or at a club and your invitation disappears and you know the host's username go to home and choose **casual**, then **relaxed bridge club** and you will find a list of all the tables playing with the hosts in alphabetical order. Clicking on the friends tab shows where any friends are playing. Clicking on your name will then take you to the table.

Names in red boxes are those who have been invited but not yet joined the table. Those in blue are already seated and the rest is self explanatory.

Host	North	South	East	West	Kibitzers	Description
Buddyboy1	Huxley7	Buddyboy1	Sitt!	amf1942	Join (1)	IMPs
CaissieCap	CaissieCap	Sitt!	RTC10	Mozart 3	Join	IMPs
Calbob	mieltzan	Calbob	Sitt!	Sitt!	Join	IMPs
CAM199	Sitt!	CAM199	Sitt!	Sitt!	Join	IMPs
CANDIDAMAC	Sitt!	Sitt!	CANDIDAMAC	Sitt!	Join	IMPs
carol402	carol402	Sitt!	pallamom	lesliebak	Join	IMPs
CarolF51	Sitt!	Robot	Sitt!	Sitt!	Join (1)	IMPs
carolineme	carolineme	Sitt!	Sitt!	Sitt!	Join	Total points
cecelliaL	Sitt!	cecelliaL	Sitt!	Sitt!	Join	IMPs
cgwright	Sitt!	Sitt!	Sitt!	Sitt!	Join (1)	IMPs
chamaleo	Sitt!	chamaleo	Sitt!	Sitt!	Join	IMPs
CharlottaL	CharlottaL	Sitt!	RoyM10	CMarrin10	Join	Matchpoints
cmenhennet	Sitt!	Sitt!	cmenhennet	Sitt!	Join	IMPs
Colin001	Sitt!	Colin001	Sitt!	Sitt!	Join	Total points

Players' names will appear in red until they have accepted the invitation. If you click **yes** but the system doesn't take you to the table logging off and then on again sometimes does the trick.

Clicking **back** or on your name allows you to leave the table. Your name will be highlighted in yellow when it is your turn to bid or play a card. When you are dummy you will be able to see your partner's hand. You can chat using the chat box (set it to "table"). Experienced BBO players use a series of abbreviations eg wp for well played, typ thank you partner. When using a tablet you may need to click on the word "message" or "chat" for the keyboard to appear.

As I learn more I will adapt and expand on these guidelines but meanwhile the Slams guidance

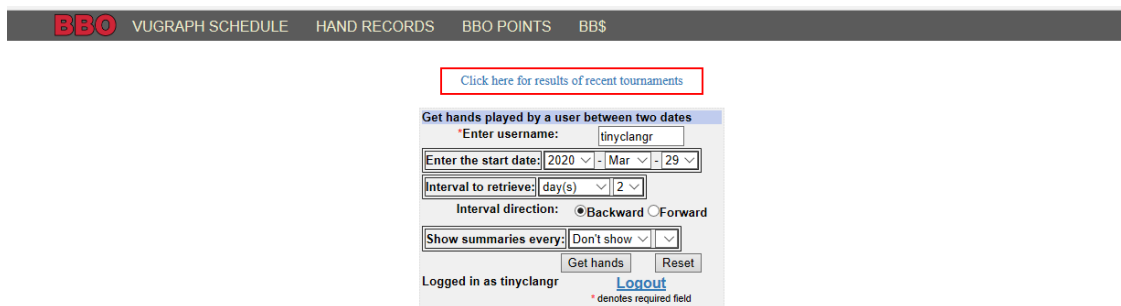
https://www.bridgewebs.com/cgi-bin/bwon/bw.cgi?club=slams&pid=display_page25&sessid=698841702586747

covers the mechanics of bidding and playing and also how to move around when playing in a club multi table game. Two aspects which players find most confusing is that North appears at the bottom of the screen and it is **the bidder who alerts or announces, not their partner**. Their partner will not see the alert. **You need to alert before finishing the bid**, eg click on **1**, click on **alert** and type "12-14", then click on **NT**.



There are also some helpful videos from the Andrew Robson Bridge Club
<https://m.youtube.com/playlist?list=PLtnBIDMP0032C8uxQpFLN3JT9iRsTm4dX>

As you play a social game scores will appear above the board number. The default is to show as IMPs but they can be changed to matchpoints. The score is showing your results compared to others playing the same boards at the same time. If you play in a tournament then you will not see the IMPs or % on the playing screen but can click on history whilst waiting for new opponents and check to see how you are doing. After the game you can view the boards and travelers by going to the BBO home page, don't log in but choose "hand records." Log in on the next screen and this screen will appear.



Opening a Movie

When you click on a Movie, your browser may ask you which program should be used to open the file. Select c:\Bridge Base Online\netbridgevu.exe. The MIME type of the download is application/bbolin.

If you regularly want to look at results then it is easier to bookmark both the home page and the usual login page.

For those wanting to know much more about the features there is a useful video on You tube.
<https://www.youtube.com/watch?v=MldFbBdea90>

Jan Titcombe 20 May 2020.