
New Normal News November 2022

1 message

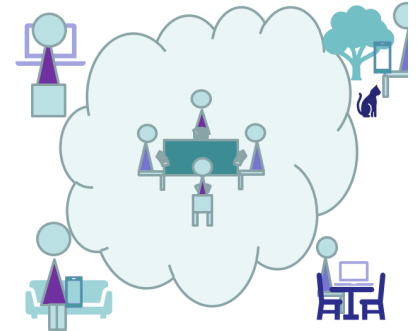
Nicky <bridgeforpleasure@gmail.com>
Reply-To: bridgeforpleasure@gmail.com
To: Nicky <nickyrbainbridge@gmail.com>

10 November 2022

[View this email in your browser](#)

New Normal News

NOVEMBER 2022



www.bridgeforpleasure.co.uk

In this edition...

Monthly Discussions
Club Bridge more Playful?
How are clubs doing?
Sharing the income
Zoom Conferences (With Link for Next Meeting)

Thanks to everyone who contributes to the conferences and gives feedback about the newsletter, or lets me know they watch the conference recordings. As long as I know this is useful, I will keep going!

The audience for this newsletter is fast growing. If you would like to receive it, you can subscribe at:

[Click here to subscribe to this newsletter](#)

[Click here to view previous newsletters](#)

Monthly Discussions

We hold a discussion about running bridge once a month. It takes place at 09.00 on a Wednesday morning, usually the third Wednesday in the month. It's an informal occasion with no formal locus.

Last month:

We talked about table numbers in our clubs. We talked about the change in profile of players since the pandemic. We talked about the offerings for elite versus social/recreational players. We talked about preferences for online vs face to face. We talked about recruiting beginners, teaching them, bringing them into clubs. There was information about EBU/EBED activity.

I proposed changing the day/time of future discussions because I expected to be teaching a face to face beginners class on Wednesday. Those present were generally not keen on a change. The face to face beginners has turned into an online group of

Thursday nights. So... there will be no change. EBU is holding a seminar for clubs on establishing teaching in clubs on Wednesday 16th November, so I am proposing we meet on the 23rd. What do people think about meeting in December? 21st is quite close to Christmas? Should we leave it until January??

Club Bridge more Playful?

Cake etc

It is very noticeable how much cake figures in many clubs events, also biscuits, buns, pastries and even wine? Is this the way to bring more of the social, especially online social, players back into the club?

Christmas Events?

For some, more serious?, clubs a modest service of mince pies at a regular duplicate is appropriate. For others special event from a major Swiss pairs to a not very serious individual with spot prizes is great. What is your club doing?

How are clubs doing?

The numbers of clubs open, and the mix of online and face to face sessions they offer seems to have stabilised. I am considering how to change the data gathering to focus on player numbers, and trends in managing clubs.

I have started collecting indicative tables numbers, but the sample size is small so far. It's a bit higher than expected, but not really reliable!

Due to a sudden increase in the cost of services atomically checking web sites for changes, another approach is needed.

Table Numbers (Based on an early small sample)

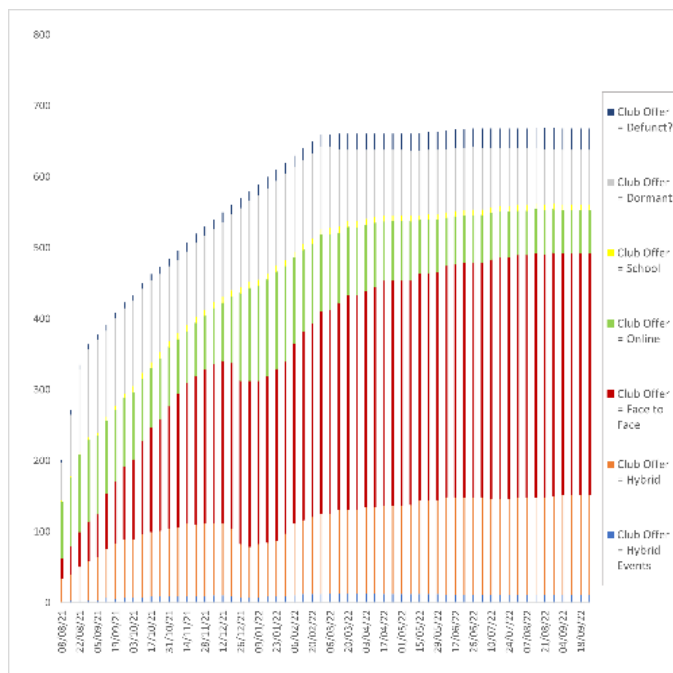
All Clubs Average Tables	Mon	Tues	Wed	Thu	Fri
Face to Face	7 2/5	6 1/2	6 2/3	7	5 4/5
BBO	9 5/6	3 1/2	7	10 1/2	11 3/4
RealBridge	13 1/2	7 1/2	4 1/2	6	8 5/6

Clubs and Face to Face (Much more detail on the web site)

Face to Face Sessions On Offer	970 (969)
Clubs Offering Face to Face	497 (497)

Club Statistics Update 8th October (30th September 2022)

This chart represents the trends in a weekly snapshot of the offer from the clubs in the current sample, 669, being monitored weekly.



Hybrid Events means the club is offering Face to Face AND Online and some in the form of Hybrid Events.
 Hybrid Club means the club is offering some Face to Face and some Online Sessions.
 Face to Face means the club is only offering Face to Face Sessions.
 Online means the club is only offering Online Sessions.
 School means the offer is principally lessons and practice.
 Dormant means the club web site is there, but the club is not offering sessions dedicated to its members.
 Defunct? means the club web site appears to have been closed down.

There's much more information at the page below, typically updated once a week.

BFP Club Statistics Page

Sharing the Income

It has become clear that the EBU's need for income to sustain its current operations overrides all other considerations and there is no room for discussion.

New Normal Zoom Conferences

The meetings are informal gatherings. They are intended to bring together a wide range of perspectives. They should allow constructive debate.

The proceedings are not secret and will be recorded and published widely.

Previous Zoom conferences:

2020	16th September 18th November	21st October 16th December
------	---------------------------------	-------------------------------

2021	20th January 17th March 19th May	17th February 21st April 16th June
------	--	--

https://youtu.be/pPEzFxs8VBA 21st July 22nd September 20th October 17th November	https://youtu.be/PbTyAz9vuHA https://youtu.be/QJlu3PIn02s https://youtu.be/VRP7eaqgaH8 https://youtu.be/DAv-7POhNHU	18th August
---	--	-------------

2022	19th January	https://youtu.be/3w9hl3UWG70
	16th February	https://youtu.be/Z5jOfwcpueU
	16th March	https://youtu.be/nlW1BIMG6-0
	20th April	https://youtu.be/ekPnjt-KIZs
	18th May	https://youtu.be/hond7ZCvKzM
	22nd June	https://youtu.be/cz1sBGPMisE
	20th July	https://youtu.be/1McE5pexdjg
	17th August	https://youtu.be/5pegkP_R_Ro
	21st September	https://youtu.be/uxmPqzTQNqo
	19th October	https://youtu.be/uxmPqzTQNqo

A link for the next Zoom conference is below:

Nicky Bainbridge is inviting you to a scheduled Zoom meeting.

Topic: New Normal Discussion
Time: Nov 23, 2022 09:00 AM London

Join Zoom Meeting
<https://us02web.zoom.us/j/81527335129?pwd=Q2k2bEpGSDBnTGtqbUZyYcE9pUUdtQT09>

Meeting ID: 815 2733 5129
Passcode: 024830

Zoom link for the next New Normal Bridge Zoom Conference

New Normal Newsletter

This is issued once a month generally on the weekend before the third Wednesday. It is written and distributed on an entirely non profit basis, takes no advertising or commission.

Previous New Normal newsletters and a subscription form are available on the Bridge for Pleasure web site.

There is also information on playing Covid-secure bridge.

A freely available bridge teaching scheme with lesson plans, notes, deals, homework quizzes and answers is there for all.

Bridge for Pleasure - Information Web Site

Please forward the letter to anyone in the bridge world who might be interested. Anyone can subscribe using the link below,

Subscribe/Unsubscribe

If you don't want to receive this newsletter, click "Unsubscribe" below. I am always keen on feedback, good or bad, so do tell me...

Copyright © 2022 Rugby Village Bridge, All rights reserved.
You are receiving this email because you opted in via our website.

Our mailing address is:
Rugby Village Bridge
Dunchurch Sportsfield and Village Hall
Rugby Road
Dunchurch, Rugby CV22 6PN
United Kingdom

[Add us to your address book](#)

Want to change how you receive these emails?
You can [update your preferences](#) or [unsubscribe from this list](#).

