
New Normal News October 2022

1 message

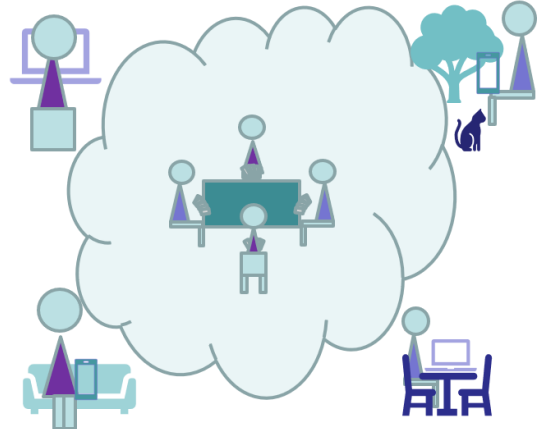
Nicky <bridgeforpleasure@gmail.com>
Reply-To: bridgeforpleasure@gmail.com
To: Rugby Village <rugbyvillagebridge@gmail.com>

8 October 2022 at 21:03

[View this email in your browser](#)

New Normal News

OCTOBER 2022



www.bridgeforpleasure.co.uk

In this edition...

- Monthly Discussions
- Recruiting new beginners
- How are clubs doing?
- Sharing the income
- Zoom Conferences (With Link for Next Meeting)

Thanks to everyone who contributes to the conferences and gives feedback about the newsletter, or lets me know they watch the conference recordings. As long as I know this is useful, I will keep going!

The audience for this newsletter is fast growing. If you would like to receive it, you can subscribe at:

[Click here to subscribe to this newsletter](#)

[Click here to view previous newsletters](#)

Monthly Discussions

We hold a discussion about running bridge once a month. It takes place at 09.00 on a Wednesday morning, usually the third Wednesday in the month. It's an informal occasion with no formal locus.

Last month topics were:

We talked about potential learners finding teachers. Learners progressing to playing in duplicate clubs. Responsibilities and roles between the English Bridge Union and the charity English Bridge Education and Development.

Recruiting Beginners

Directories etc

The EBU have "announced" the new Teachers Directory in an email to members. The number of entries, as of the time of writing, is 120. It looks like the majority are EBTA members, but only around 60%? This is good news, as it brings a new community of teachers to notice. The EBU web site is still focussed on the old club and county based directory. There's a bit more work to do there as the new directory grows.

How do we make this work even better?

There are the pieces for the promotion of bridge here, but no overall picture yet to bind them into an effective operation. Perhaps a conference between the major players and experts would help?

How are clubs doing?

The numbers of clubs open, and the mix of online and face to face sessions they offer seems to have stabilised. I am considering how to change the data gathering to focus on player numbers, and trends in managing clubs.

Clubs and Teaching?

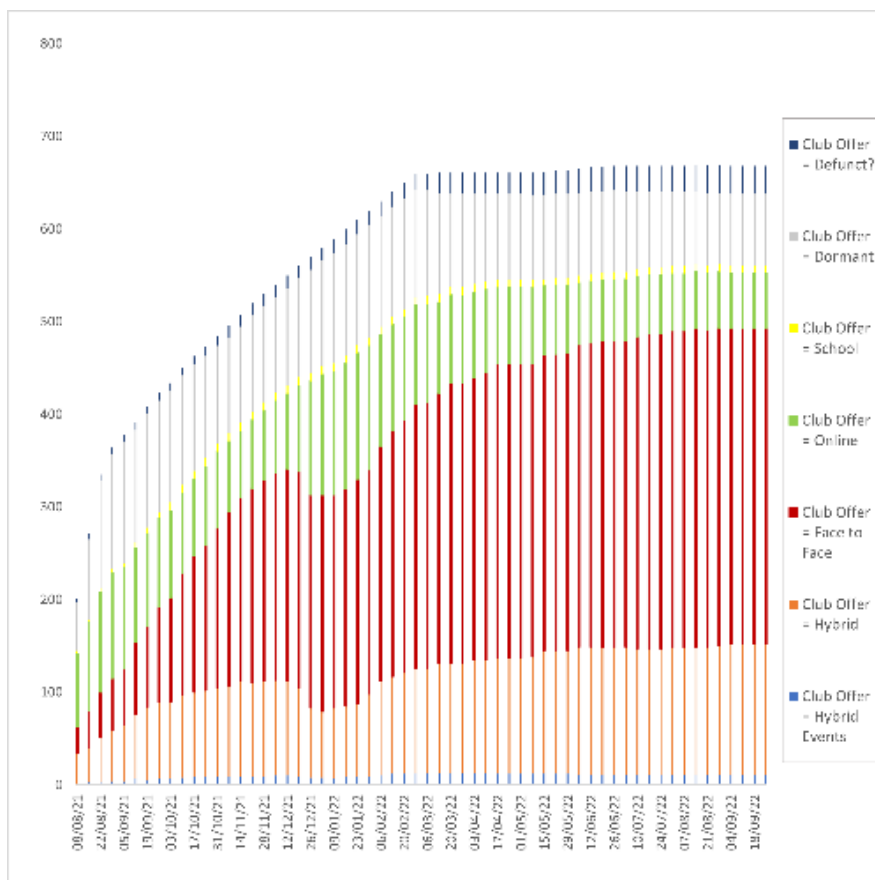
Club Home Pages reviewed for Teaching Information	387	
Home page shows no current activity	210	54.26%
Clubs will be counted multiple times:		
Club offers Rubber	1	0.35%
Club offers Chicago	3	1.06%
Beginners Lessons	93	32.98%
Improvers Lessons	81	28.72%
Advancers Lessons	6	2.13%
Practice	41	14.54%
Tasters	2	0.71%
Private Lesson	2	0.71%
BFA	3	1.06%
EBS	1	0.35%
FastTrack	5	1.77%
Refresher	5	1.77%
Page refers learners to named teacher	43	15.25%
Club Home Page Names Teacher(s)	120	
No teacher name yet recorded	550	

Clubs and Face to Face

Face to Face Sessions On Offer	969 (968)
Clubs Offering Face to Face	497 (496)

Club Statistics Update 30th September (28th August 2022)

This chart represents the trends in a weekly snapshot of the offer from the clubs in the current sample, 669, being monitored weekly.



Hybrid Events means the club is offering Face to Face AND Online and some in the form of Hybrid Events.

Hybrid Club means the club is offering some Face to Face and some Online Sessions.

Face to Face means the club is only offering Face to Face Sessions.

Online means the club is only offering Online Sessions.

School means the offer is principally lessons and practice.

Dormant means the club web site is there, but the club is not offering sessions dedicated to its members.

Defunct? means the club web site appears to have been closed down.

There's much more information at the page below, typically updated once a week.

BFP Club Statistics Page

Sharing the Income

Here are two proposals to share income more fairly and promote grass roots bridge.

Halve Club Face to Face P2P/UM

The Pay to Play levy on clubs for face to face sessions should be halved. This will help make the returning face to face sessions financially viable.

Charge for EBU Score Support

The EBU should make an annual charge for support of EBU Score in clubs. It was

recently made clear that EBU staff spend some time supporting this product.

It's presently supplied free of charge to affiliated clubs.

Despite this, many affiliated clubs still choose to use ScoreBridge, and pay an annual service fee, or other scoring programmes. These clubs, often smaller and more socially minded, are subsidising the use of EBU Score by others. The EBU could charge around half the typical annual support fee of ScoreBridge for EBUScore restore fairness and gain a little income.

New Normal Zoom Conferences

The meetings are informal gatherings. They are intended to bring together a wide range of perspectives. They should allow constructive debate.

The proceedings are not secret and will be recorded and published widely.

Previous Zoom conferences:

2020	16th September 18th November	21st October 16th December
2021	20th January 17th March 19th May	17th February 21st April 16th June
	21st July 18th August 22nd September 20th October 17th November	https://youtu.be/PbTyAz9vuHA https://youtu.be/pPEzFxs8VBA https://youtu.be/QJlu3PIn02s https://youtu.be/VRP7eaeqaH8 https://youtu.be/DAv-7POhNHU
2022	19th January 16th February 16th March 20th April 18th May 22nd June 20th July 17th August 21st September	https://youtu.be/3w9hl3UWG70 https://youtu.be/Z5jOfwcpueU https://youtu.be/nIW1BIMG6-0 https://youtu.be/ekPnjt-KIZs https://youtu.be/hond7ZCvKzM https://youtu.be/cz1sBGPMisE https://youtu.be/1McE5pexdjg https://youtu.be/5pegkP_R_Ro https://youtu.be/uxmPqzTQNqo

A link for the next Zoom conference is below:

Nicky Bainbridge is inviting you to a scheduled Zoom meeting.

Topic: New Normal Discussion October 2022

Time: Oct 19, 2022 09:00 AM London

Join Zoom Meeting

<https://us02web.zoom.us/j/87151525955?pwd=OS9CaTM2MUJjbmdwMWxlbTg0L3IKUT09>

Meeting ID: 871 5152 5955

Passcode: 996670

Zoom link for the next New Normal Bridge Zoom Conference

New Normal Newsletter

This is issued once a month generally on the weekend before the third Wednesday. It is written and distributed on an entirely non profit basis, takes no advertising or commission.

Previous New Normal newsletters and a subscription form are available on the Bridge for Pleasure web site.

There is also information on playing Covid-secure bridge.

A freely available bridge teaching scheme with lesson plans, notes, deals, homework quizzes and answers is there for all.

Bridge for Pleasure - Information Web Site

Please forward the letter to anyone in the bridge world who might be interested. Anyone can subscribe using the link below,

Subscribe/Unsubscribe

If you don't want to receive this newsletter, click "Unsubscribe" below. I am always keen on feedback, good or bad, so do tell me...

Copyright © 2022 Rugby Village Bridge. All rights reserved.
You are receiving this email because you opted in via our website.

Our mailing address is:

Rugby Village Bridge
Dunchurch Sportsfield and Village Hall
Rugby Road
Dunchurch, Rugby CV22 6PN
United Kingdom

[Add us to your address book](#)

Want to change how you receive these emails?
You can [update your preferences](#) or [unsubscribe from this list](#).

