
New Normal News August 2022

1 message

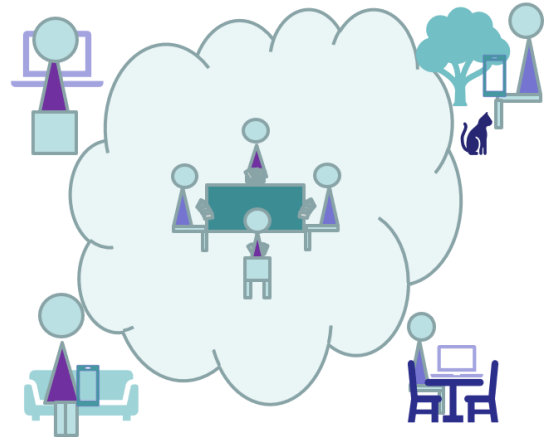
Nicky <bridgeforpleasure@gmail.com>
Reply-To: bridgeforpleasure@gmail.com
To: Nicky <nickyrbainbridge@gmail.com>

8 August 2022 at 18:21

[View this email in your browser](#)

New Normal News

AUGUST 2022



www.bridgeforpleasure.co.uk

In this edition...

- Monthly Discussions
- EBU Restart Event
- How are clubs doing?
- Sharing the income
- Zoom Conferences (With Link for Next Meeting)

Thanks to everyone who contributes to the conferences and gives feedback about the newsletter, or lets me know they watch the conference recordings. As long as I know this is useful, I will keep going!

The audience for this newsletter is fast growing. If you would like to receive it, you can subscribe at:

[Click here to subscribe to this newsletter](#)

[Click here to view previous newsletters](#)

Monthly Discussions

We hold a discussion about running bridge once a month. It takes place at 09.00 on a Wednesday morning, usually the third Wednesday in the month. It's an informal occasion with no formal locus.

Last month topics were:

Conversation about providing duplicate bridge in the new normal. Talked about: Heat! Trends in numbers of players in clubs; Age Profile; Resilience; Table Fees and Subscriptions; Volunteer vs professional help; F2F vs Online; Player habits and preferences; Member accounts; Historic data; U3A; Teaching; Pros and Cons of online social bridge; Afternoons vs Evenings; How do EBU see the future? How do we see the future?

EBU Restart Seminar 28th July

This meeting included presentations from clubs on their experience and successes and from EBED on training and much useful discussion. The new club directory was demonstrated with details of how clubs can get the best from it.

A recording is available on YouTube:

<https://youtu.be/Xx4LNyFZ4is>

How are clubs doing?

Ten more clubs returned to face to face since last month, adding 37 sessions to the weekly offer.

Still in catch up, but nearly there. I have been adding a few new clubs into the sample - selected by "completing" the data for a particular county.

These statistics are up to July 27th.

The level of updates to club web sites has picked up again. Can't see any particular

reason. Have started to note references to lessons or teachers or practice etc.

Rather concerned that out of roughly 298 classified so far 160 have no reference to learning or teaching bridge.

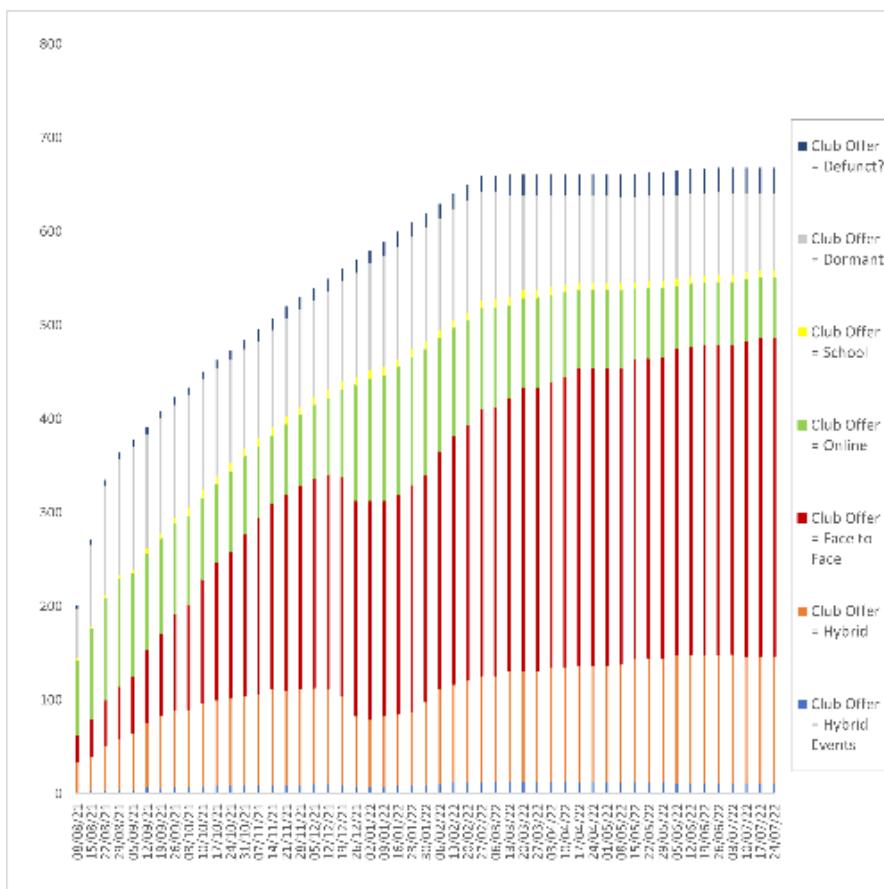
Club Home Pages reviewed for Teaching Information	298	
Home page shows no current activity	160	53.69%
Clubs will be counted multiple times:		
Club offers Rubber	0	0.00%
Club offers Chicago	2	0.54%
Beginners Lessons	74	20.00%
Improvers Lessons	61	16.49%
Advancers Lessons	6	1.62%
Practice	35	9.46%
Tasters	2	0.54%
Private Lesson	2	0.54%
BFA	1	0.27%
EBS	1	0.27%
FastTrack	5	1.35%
Refresher	4	1.08%
Page refers learners to named teacher	32	8.65%
Club Home Page Names Teacher(s)	109	
No teacher name yet recorded	560	

Clubs and Face to Face

Face to Face Sessions On Offer	941 (924)
Clubs Offering Face to Face	492 (482)

Club Statistics Update 8th August (11th July 2022)

This chart represents the trends in a weekly snapshot of the offer from the clubs in the current sample, still 668, being monitored weekly.



Hybrid Events means the club is offering Face to Face AND Online and some in the form of Hybrid Events.

Hybrid Club means the club is offering some Face to Face and some Online Sessions.

Face to Face means the club is only offering Face to Face Sessions.

Online means the club is only offering Online Sessions.

School means the offer is principally lessons and practice.

Dormant means the club web site is there, but the club is not offering sessions dedicated to its members.

Defunct? means the club web site appears to have been closed down.

There's much more information at the page below, typically updated once a week.

BFP Club Statistics Page

Sharing the Income

Here are two proposals to share income more fairly and promote grass roots bridge.

Halve Club Face to Face P2P/UM

The Pay to Play levy on clubs for face to face sessions should be halved. This will help make the returning face to face sessions financially viable.

Charge for EBUScore Support

The EBU should make an annual charge for support of EBU Score in clubs. It was recently made clear that EBU staff spend some time supporting this product.

It's presently supplied free of charge to affiliated clubs.

Despite this, many affiliated clubs still choose to use ScoreBridge, and pay an annual service fee. These clubs, often smaller and more socially minded, are subsidising the use of EBU Score by others. The EBU could charge around half the typical annual support fee of ScoreBridge for EBUScore restore fairness and gain a little income.

New Normal Zoom Conferences

The meetings are informal gatherings. They are intended to bring together a wide range of perspectives. They should allow constructive debate.

The proceedings are not secret and will be recorded and published widely.

Previous Zoom conferences:

2020	16th September 18th November	21st October 16th December
2021	20th January 17th March 19th May	17th February 21st April 16th June
18th August	21st July https://youtu.be/pPEzFxs8VBA	https://youtu.be/PbTyAz9vuHA
	22nd September 20th October 17th November	https://youtu.be/QJlu3Pln02s https://youtu.be/VRP7eaeqaH8 https://youtu.be/DAv-7POhNHU
2022	19th January 16th February 16th March 20th April 18th May 22nd June 20th July	https://youtu.be/3w9hl3UWG70 https://youtu.be/Z5jOfwcpueU https://youtu.be/nIW1BIMG6-0 https://youtu.be/ekPnjt-KIZs https://youtu.be/hond7ZCvKzM https://youtu.be/cz1sBGPMisE https://youtu.be/1McE5pexdjg

A link for the next Zoom conference is below:

Nicky Bainbridge is inviting you to a scheduled Zoom meeting.

Topic: New Normal Discussion August 2022

Time: Aug 17, 2022 09:00 AM London

Join Zoom Meeting

<https://us02web.zoom.us/j/85319130119?pwd=Y3NwSEpPRVBiYlhLcmJwT3pkM3NPQT09>

Meeting ID: 853 1913 0119

Passcode: 575837

Zoom link for the next New Normal Bridge Zoom Conference

New Normal Newsletter

This is issued once a month generally on the weekend before the third Wednesday. It is written and distributed on an entirely non profit basis, takes no advertising or commission.

Previous New Normal newsletters and a subscription form are available on the Bridge for Pleasure web site.

There is also information on playing Covid-secure bridge.

A freely available bridge teaching scheme with lesson plans, notes, deals, homework quizzes and answers is there for all.

Bridge for Pleasure - Information Web Site

Please forward the letter to anyone in the bridge world who might be interested. Anyone can subscribe using the link below,

Subscribe/Unsubscribe

If you don't want to receive this newsletter, click "Unsubscribe" below. I am always keen on feedback, good or bad, so do tell me...

Copyright © 2022 Rugby Village Bridge. All rights reserved.
You are receiving this email because you opted in via our website.

Our mailing address is:

Rugby Village Bridge
Dunchurch Sportsfield and Village Hall
Rugby Road
Dunchurch, Rugby CV22 6PN
United Kingdom

[Add us to your address book](#)

Want to change how you receive these emails?
You can [update your preferences](#) or [unsubscribe from this list](#).

