
Bridge in the New Normal May 2021

1 message

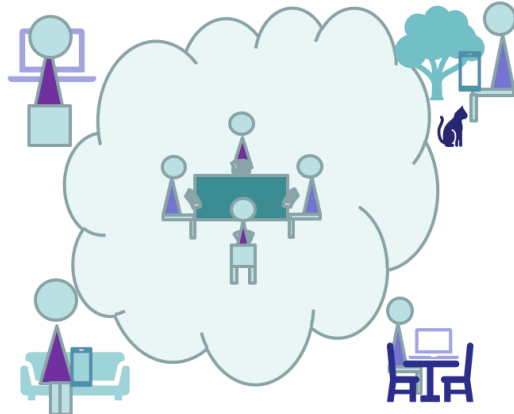
Nicky <bridgeforpleasure@gmail.com>
Reply-To: bridgeforpleasure@gmail.com
To: Nicky <nickyrbainbridge@gmail.com>

17 May 2021 at 07:21

[View this email in your browser](#)

**New
Normal
News**

April 2021



www.bridgeforpleasure.co.uk

In this edition...

- Back in the Room
- Twelve Crucial Months for Bridge
- Spotting The Trends
- BAMSA Conference
- EBU/Club Communications
- Zoom Conferences (Including Link for Next Meeting)

The audience for this newsletter is fast growing. If you would like to receive it, you can subscribe at:

[Click here to subscribe to this newsletter](#)

[Click here to view previous newsletters](#)

Back in the Room

Clubs announcing reopening on: **May 17th 2021.**

Kenilworth Bridge Club
Nottingham Bridge Club
Rugby Village Bridge Club
Stamford Bridge Club
South Croydon Bridge Club
Mid Essex (For teaching)

Clubs announcing reopening on: **June 21st 2021.**

West Midlands Bridge Club
Mid Essex (For Duplicate)



Regulations

The roll out of vaccination has made us all much safer. However, a fast spreading "variant of concern" has caused debate around the reopening plan. The government has stuck with the relaxations planned for 17th May, but there is hesitation around the June 21st date. The date itself may be delayed, or there may be reduced scope for opening up. We can only wait and see.

Please always check the latest documents, and maybe take advice, before you make any decisions. In the past this sort of rules/guidance

has changed rapidly and probably will again. It has often not been clear enough for everyone to be sure, and agreed, on what it means.

Bridge for Pleasure - Regulations Information Page

Restart of Rugby Village

- Booking for the first event sold out within 24 hours and could have been filled twice.
- Some members renewed their membership immediately after the announcement of face to face restart

New players briefing

- Here is a link to the new briefing we created for players. It describes the precautions we are taking.

Updated Players Briefing - Covid precautions

Twelve Crucial Months for Bridge

We have all speculated on the changes of the last fourteen months. They have certainly been revolutionary. We all have our views on the next twelve. Now we are in the early days of the restart we will start to see how the game has changed.

Spotting the trends

92% of the clubs use BridgeWebs as their host; 1% use Pianola. There are two more bridge club specialist hosts and some clubs are using general purpose host/designers.

Bridging Academia, Policy and Practice Online Conference:

Monday 28 June – Thursday 1 July 2021

Free international conference for academics, bridge players, teachers & administrators

Join Bridge: A MindSport for All (BAMSA) – a global network – and share best practice Case studies from: Australia, China, Croatia, Czech Republic, Denmark, India, Ireland, Israel, Japan, Madeira, Netherlands, Norway, Poland, South Pacific, UK, USA
More than 60 presenters and panelists from 20 countries

I am going to be on the panel for one discussion!

EBU Club Insurance

The EBU has sourced insurance for itself and its affiliated clubs for many years. There have been two policies of importance to clubs. A general public liability insurance policy available to clubs who opt to purchase it through this route. A policy taken out and paid for centrally by the EBU providing some legal liability insurance to EBU Affiliated County and Club officials.

Insurance has become of more importance and interest to clubs as they consider the risks of operating in the Covid pandemic world.

28th April: The EBU announced, with two days of cover to go, that the "free" legal cover for club officials would cease. The EBU informed clubs that the cover had been provided free of charge by the broker. The broker considered it had been too generous, and stated that such cover was not now available.

At least one club immediately purchased such cover.

11th May: Then the EBU announced that cover had been secured and backdated to the expiry of the previous arrangements.

At least one club tried to contact the broker direct and found it almost impossible. Perhaps the EBU needs to consider changing the way it manages insurance including its choice broker next year and the way it communicates on the subject.

EBU/Club Communications

We welcome an initiative by the EBU to analyse and improve communications between the EBU and its affiliated clubs. I was delighted to be invited to an initial meeting which discussed the relationship. Other clubs, a handful of counties, EBU staff and EBU directors participated.

We really hope to see regular communication, to all clubs, about this project.

New Normal Zoom Conferences

The meetings are informal gatherings. They are intended to bring together a wide range of perspectives. They should allow constructive debate.

The proceedings are not secret and will be recorded and published widely.

Zoom conferences took place on:

16th September
21st October
18th November
16th December 2020
20th January 2021
17th February 2021
17th March 2021
21st April 2021.

A link for the **next** Zoom conference is below:

Nicky Bainbridge is inviting you to a scheduled Zoom meeting.

Topic: New Normal May 2021

Time: May 19, 2021 02:00 PM London

Join Zoom Meeting

<https://us02web.zoom.us/j/89675442361>

Meeting ID: 896 7544 2361

Zoom link for the next New Normal Bridge Zoom Conference

New Normal Newsletter

This is issued once a month generally on the third weekend. It is written and distributed on an entirely non profit basis, takes no advertising or commission.

Previous New Normal newsletters and a subscription form are available on the Bridge for Pleasure web site.

There is also information on playing Covid-secure bridge.

A freely available bridge teaching scheme with lesson plans, notes, deals, homework quizzes and answers is there for all.

Bridge for Pleasure - Information Web Site

Please forward the letter to anyone in the bridge world who might be interested. Anyone can subscribe using the link below,

Subscribe/Unsubscribe

If you don't want to receive this newsletter, click "Unsubscribe" below.

I am always keen on feedback, good or bad, so do tell me...

Copyright © 2021 Rugby Village Bridge, All rights reserved.
You are receiving this email because you opted in via our website.

Our mailing address is:
Rugby Village Bridge
Dunchurch Sportsfield and Village Hall
Rugby Road
Dunchurch, Rugby CV22 6PN

United Kingdom

[Add us to your address book](#)

Want to change how you receive these emails?
You can [update your preferences](#) or [unsubscribe from this list](#).

