

## Scoring with ScoreBridge and Bridgemates.

*It is best to check that the Lap Top or PC being used has all the latest Microsoft updates at least 1 hour before the event. This prevents updates being done part way through an event.*

Make sure that Bridgemate Control Software is not open (Has been closed down from previous events)

Start ScoreBridge

ScoreBridge: New Event

Make sure Use Bridgemates is checked

Enter the number of Tables (rounded up)

New Event Profile

Change Preferences for this screen

Pairs  Use BridgeMates

OK

Cancel

Help

Description - ONLY use for special events or to distinguish two events on the same day

8 Number of Tables in the first Section  
- rounded up if a half or a Rover

No. of Sections 1

EBU P2P Charge Rate Types

10,Normal club event

Select Hand Record File

Score With Match Points

OK

Pick the required Movement. See list of recommended movements on our web site under TD info.

Prerferences Movement Organiser Other Pages Print

### Mitchell Share + Relay - Boards Down, Pairs Up

Supplied   
 User (selected)   
 User (all)

Number of Tables  
 - rounded up if a ½ or a Rover

Rover Pair   
 **Aggregate Scoring**

**Movement Detail**

Boards Per Round  
 Total Boards  
 First Round Not Played  
 No. of Rounds Not Played at end

**Mitchell movement details**

Feed IN table (from relay)   
 Arrow switches on rounds

**Options**

E/W numbered as Table plus   
 2 Winners

7R lwHowell Pairs 2-7 at T3  
 7R lwHowell Pairs 4-5 at T2  
 7R lwHowell Pairs 7-2 at T3  
 8R Double Weave Mitchell  
 9 Round Hes Mitchell  
 11R BB=Howell Pairs 16-1 at T1  
 12R =Howell Pairs 8-9 at T1  
 12R =Howell Pairs 9-10 at T1  
 13R =Howell Pairs 1-11 at T1  
 13R =Howell Pairs 16-1 at T1  
 13R =Howell Pairs 7-11 at T1  
 13R =SwHowell Pairs 16-1 at T1  
 13R Extended 7T Howell SBU  
 14 Round 3quarter Howell  
 14R 7 ½ table Bump Mitchell  
 15 Round Howell  
 7R Double Howell  
 8R Double Howell  
**Mitchell Share + Relay**  
 Mitchell Skip 8 Rounds  
 Mitchell Skip up to 7 Rounds

Example above is for 8 tables, share and relay. Tables 1 and 8 share, relay between 4 and 5. 8 X 3 board rounds.

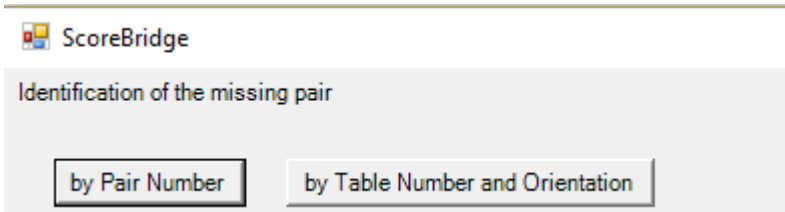
OK

Follow on screen instructions.

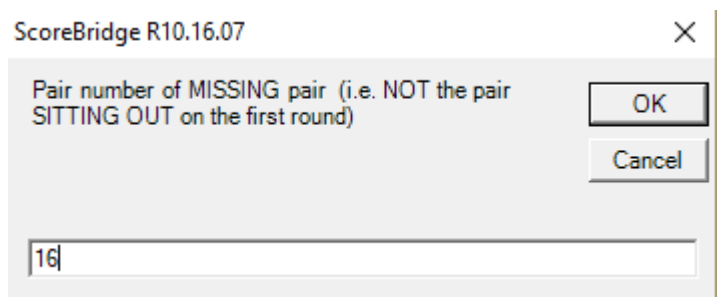
ScoreBridge R10.16.07 ✕

Is there a Missing Pair?  
 (So pair number can be omitted from score sheets)

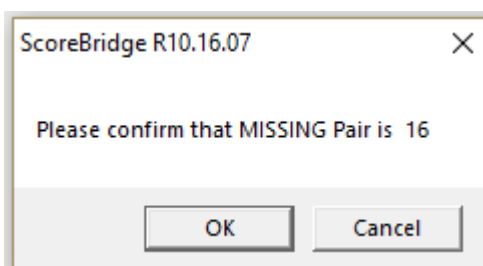
If yes you may record the missing pair in 2 different ways



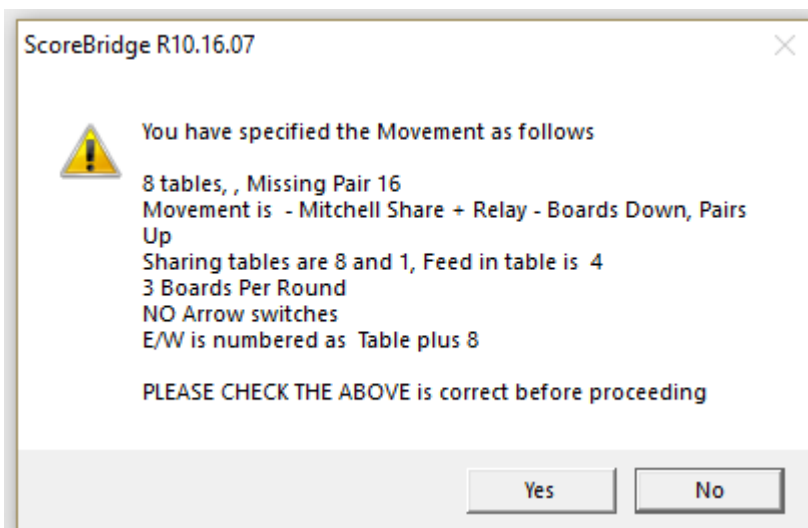
Example missing 8 East / West for 8 Tables



OK



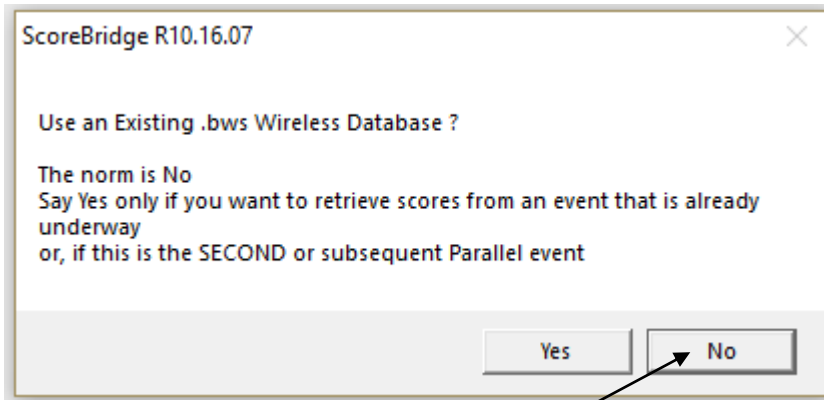
OK



This confirms the Movement to be played

If NO then you can select a new movement

Normal answer is Yes



No (Only use yes when recovering a crashed session)

Bridgemate Control Software (BCS) should now start

Players may now enter Table Numbers and their EBU number.

Check on BCS that player names are entered correctly  
Names may be corrected by double clicking on name or EBU number and retyping.  
May also be corrected on individual Bridgemate.

Also check names on ScoreBridge.

It is possible to enter EBU member rather than type the name in full.

## Once play has finished

ScoreBridge Wireless Control

Restart Preferences Other Pages

0 Outstanding scores

Round	Table	Board
-------	-------	-------

**Score Retrieval**

Retrieving

Not Retrieving

**Scrolling Results**

Updating

Not Updating

Timing Options (prototype only)

Boards Per Round

Minutes Per Board

Restart Timer

Time left

Scrolling Screen

Show Time Left

Only show on last Board

Change Movement

Players Page

Preview (and Print) Player Names and Numbers

Score Sheets

**Missing names at tables 1 2 3 4 5 6 7 8 - Correct via this button**

Score sheet

Check scores

All Boards Done

“NO” no need to reconnect to BCS

“YES” Convert any 60% to Average Plus now

Results will be displayed

Send

Upload Result to BridgeWebs (bottom option)

This will upload the web page

**To send results to the EBU**

Make File

P2P File

Open the Upload page

Log in

Submit

Attach files

Upload

Check all names are correct. An error message will appear for any miss-matched between name and EBU number.