

NASHVILLE
TENNESSEE



FIRECRACKER
REGIONAL

JULY 3 THRU 9, 2017

- *Gold Rush or Bracketed Team Events EVERY Day*
- *Intermediate/Newcomer Games EVERY Session*
- *Convenient Daylight Schedule for Most Events*
- *Mix of 2, 3 and 4 Session Knock-out Events*
- *Preliminary Schedule on the Back*

Newly Remodeled Sheraton Music City (Airport/McGavock Pike)

\$129 Per Room – Up to Quad Occupancy

To Make Your Own Reservations, Click On This Link:

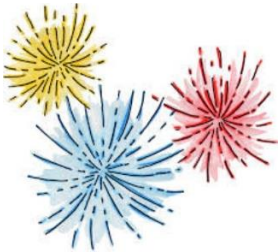
[Direct Hotel Reservations Page](#)

Or Call 888-627-7060 And Ask For “Bridge Tournament.”

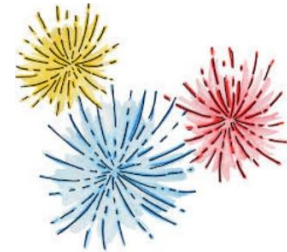
- *Tournament Chair and Contact Information:*

Patrick Williams (615) 423-6472

Stopgaap@yahoo.com (note: 2 “a’s”)



4TH
OF
JULY



	Morning 9:30	Afternoon 2:00	Evening 7:15		KO	# rounds
MON 7/3	PRELIMINARY SCHEDULE	Open Pairs A/B/C	Open Pairs A/B/C			
		Gold Rush Pairs	Gold Rush Pairs			
		I/N 9er/49er/199er Pairs	I/N 9er/49er/199er Pairs			
		Afternoon Pair Series	Evening Pair Series			
		KO1 1/4	KO1 2/4		1	4
			KO2 1/3		2	3
					3	3
TUE 7/4	Open Pairs A/B/C	Open Pairs A/B/C	<i>semiFAST-></i> Open Pairs A/B/C 1/2		4	4
	Gold Rush Pairs	Gold Rush Pairs	<i>semiFAST-></i> Gold Rush Pairs 1/2		5	3
	I/N 9er/49er/199er Pairs	I/N 9er/49er/199er Pairs	I/N 9er/49er/199er Pairs		6	3
	Morning Pair Series	Afternoon Pair Series	Evening Pair Series			
	KO1 3/4	KO1 4/4	KO3 1/3			
	KO2 2/3	KO2 3/3	semi fast about 2.5 hours also mini about 21/22 brds			
	Single Swiss A/B/C					
WED 7/5	A/X Swiss	A/X Swiss	<i>semiFAST-></i> Open Pairs A/B/C 2/2			
	B Bracketed Swiss	B Bracketed Swiss	<i>semiFAST-></i> Gold Rush Pairs 2/2			
	I/N 9er/49er Pairs	I/N 9er/49er Pairs	I/N 9er/49er/199er Pairs			
	Morning Pair Series	Afternoon Pair Series	Evening Pair Series			
			KO3 2/3			
			Compact KO1 1/2			
THU 7/6	Open Pairs A/B/C	Open Pairs A/B/C	Combo Pair-BAM A/B/C			
	Gold Rush Pairs	Gold Rush Pairs				
	I/N 9er/49er/199er Pairs	I/N 9er/49er/199er Pairs	I/N 9er/49er/199er Pairs			
	Morning Pair Series	Afternoon Pair Series	Evening Pair Series			
	KO4 1/4	KO4 2/4	KO3 3/3			
		KO5 1/3	Compact KO1 2/2			
FRI 7/7	Open Pairs A/B/C	Open Pairs A/B/C	Open Swiss A/B/C 1/2			
	Gold Rush Pairs	Gold Rush Pairs	Gold Rush Swiss 1/2			
	I/N 9er/49er/199er Pairs	I/N 9er/49er/199er Pairs	I/N 9er/49er/199er Pairs			
	Morning Pair Series	Afternoon Pair Series	Evening Pair Series			
	KO4 3/4	KO4 4/4				
	KO5 2/3	KO5 3/3				
SAT 7/8	Open Pairs A/B/C	Open Pairs A/B/C	Open Swiss A/B/C 1/2			
	Gold Rush Pairs	Gold Rush Pairs	Gold Rush Swiss 1/2			
	I/N 9er/49er/199er Pairs	I/N 9er/49er/199er Pairs	I/N 9er/49er/199er Pairs			
	Weekend Pair Series	Weekend Pair Series	Weekend Pair Series			
	KO6 1/3	KO6 2/3	KO6 3/3			
		Compact KO2 1/2	Compact KO2 2/2			
SUN 7/9	A/X Swiss	A/X Swiss				
	B Bracketed Swiss	B Bracketed Swiss				
	I/N 9er & 49er Pairs	I/N 9er & 49er Pairs				
	Weekend Pair Series	Weekend Pair Series				

Two compact

Stratifications:

Open Pairs/Teams A/B/C	1750/3500/3500+	All events stratified by average masterpoint holdings
A/X Pairs/Teams	5000/5000+	No individual player may have higher than the upper limit of an event
B/C Pairs/Teams	1500/3000	
Gold Rush Pairs/Team	300/500/750	All compact KO's handicapped
B Bracketed Teams	Upper limit = 3000	Open KO top bracket MAY be handicapped
Intermediate/Newcomer (less than 200)	Director discretion	Director discretion
Pair Series A/B/C	1000/2500/2500+	
Single Session Teams A/B/C	1000/2500/2500+	