

THE DUMMY

QUARTERLY PUBLICATION OF THE DELAWARE STATE BRIDGE ASSOCIATION

MAY 2013
MARIE FILANDRO, EDITOR

UPCOMING EVENTS

Unit 120 Sectional & Grand National Teams
May 3 - May 5
Kingston PA

DSBA Swiss Teams Championship
May 11
The Bridge Studio

DE Summer Teams - register by May 15

Unit 121 Sectional
May 17 - May 19
Wyomissing PA

Wilmington Sectional
May 31 - June 2
The Bridge Studio

District 4 - Valley Forge Regional
June 17 - June 23
King of Prussia PA

First State Southern Sectional
July 18 - July 20
Lewes Presbyterian Church

District 4 - Split Regional
July 22 - July 28
Liverpool NY and Mechanicsburg PA

North American
Bridge Championships
August 1 - August 11 - Atlanta GA

The State of Bridge in the State of Delaware

As I reminisce on my 40+ years in Delaware, I still marvel at the "North vs South", "below the canal", "above the canal" discussions. When we play in Lewes, or when we play in Wilmington, we get the same question: "You drove all the way from Dover to play bridge?"

Recognizing this and adhering to the new By-laws, the Board made a decision to work toward making bridge more equitable in Delaware by:

1) Nominating and electing additional board members from among the players in the southern part of the state. We currently have 4 out of 14 board members who play primarily in southern clubs.

2) Scheduling State Games in two locations so that every player has the same opportunity to earn points in their local area. State Pairs Games, State Team Games, Pro-Am games and the Delaware Summer Teams have both a North and South component.

3) Adding a southern sectional tournament. The second annual First State Sectional in Lewes is scheduled for July 18 - 20, 2013.

These specific goals have been achieved. The Board continues to strive toward increased involvement and continually assesses programs that offer opportunities for all of our members.

I challenge you to "cross the canal" and play bridge in a different club. Consider coming to Lewes in July; hundreds of thousands of people come to the beach. Why not join them? Come to Wilmington in September for the sectional. Sign up for the summer teams - bridge in a more casual atmosphere.

VOLUNTEER! Every club needs volunteers; every state game needs volunteers. How can you help? Pick up boards from the tables and return them to the director. Bring a favorite snack to share with other players. Make newer players feel welcome. Help replenish food at tournaments; call others and suggest they might want to play. Be the partnership chair. Put your name in nomination for a position on the Board. Let's work together to make the State of Bridge in Delaware outstanding for every member of the DSBA!

Happy Spring! Trina

Welcome, Eli

The DSBA is pleased to welcome Eli Solomon as a new board member. Eli will replace Mike Mocella, who has served very well as Newcomer/Intermediate Chairperson, but is leaving the area for "warmer climes."

Eli is an excellent replacement and, in addition to having attained the status of Diamond Life Master, he has served the ACBL in many capacities during the past 45 years. Eli was appointed to the Inaugural Committee in District 6 and was instrumental in establishing policies, procedures and guidelines for the Recorder System which is still in place today. Eli recently transferred into our unit from Unit 135 in District 6. He has been a tremendous asset in South Delaware helping club managers as a Director and players of all levels as a trainer and mentor. There is no doubt that he will add considerable expertise to the DSBA. Peter Harris

Advancement in RankLife Master

Lou Ann Carter
Pieter Vanbennekom

Bronze Life Master

Sandy Anzilotti
Lydia Boyer
Mervin Jones
Edward Maser
Christine Matus
William Shriver

Silver Life Master

Stephen Miller

Gold Life Master

Iara Erb

Grand Life Master

Rick Rowland

DSBA Directory

Thanks to Marie Grabowski for once again compiling an updated directory for Unit 190. A tremendous amount of effort goes into compiling our directory and it will be available for pick-up at clubs within Unit 190 soon. Be sure to take home a copy!

DSBA Swiss Team Championship

Upstate - May 11 - The Bridge Studio
10:30 a.m.

Pre-registration is requested.....by May 4
Call Barbara Rhoades - 302-375-6414

Or email bmossr@gmail.com
Additional information on www.unit190.org

Downstate - April 27 - ResultsFlight A winners

Beth Mallon, Lillian Schaubé,
Terry Dutton, Don Wand

Flight B/C/D winners -

Jacque Kappes, Mel Presgraves,
Donna & Dave Vaughn

Goodbye, Mike and Diane

Mike Mocella has been a great DSBA Board Member and Intermediate/Newcomer Chairperson. He will be leaving soon just a couple of months before the end of his second two-year term.

With Mike's encouragement, Unit 190 has been utilizing some of its funds each year to support clubs and teachers in their educational sessions and activities. Recently, this support has been extended to support free beginner bridge classes periodically with the hopes of bringing new players to the game.

During his time as chairperson, Mike expanded the popular pro/am pairs game to include a downstate site and also began a pro-am teams game that is truly unit-wide with both upstate and downstate locations. His efforts resulted in a bridge lending library of donated and loaned books and bridge materials which now contains over 300 volumes. And, he coordinated Intermediate/Newcomer events at two Wilmington regionals.

Needless to say, all of us in Unit 190 are going to miss his hard work on the board and we'll miss both Mike and Diane as they move to Florida. We wish both of them all the best always.

Marie Filandro

"In Memoriam" in the February 2013 issue of the DUMMY should have also included Lorraine G. Miller

Unit 190 - 2012 Winners - Ace of Clubs and Mini-McKenney

	Ace of Clubs		Mini-McKenney
0 - 5	Donald Pyne	0 - 5	Karen Pollak
5 - 20	Jill Itzkovitz	5 - 20	Jill Itzkovitz
20 - 50	Barbara Saulsbury	20 - 50	Barbara Saulsbury
50 - 100	Caroline Hughes	50 - 100	Caroline Hughes
100 - 200	Scott Freber	100 - 200	Pieter Vanbennekorn
200 - 300	Timothy Schenck	200 - 300	Toni Notarnicola
300 - 500	Carol Hopson	300 - 500	Christine Matus
500 - 1000	Peter Harris	500 - 1000	Peter Harris
1000 - 2500	Elizabeth Mallon	1000 - 2500	Marie Anzilotti
2500 - 5000	Randy Berseth	2500 - 5000	Randy Berseth
5000 - 7500	Lois Stuart	5000 - 7500	Lois Stuart
7500 - 10000	Rick Rowland	7500 - 10000	Rick Rowland

North American Bridge Championships at St. Louis - March 13 - March 24
DSBA members who attended - Paul Amer, Sam Amer, Randy Berseth,
Jess & Lois Stuart, Sharon Weintrob

Top Masterpoint winners at Regionals and Sectionals

Wilkes Barre Regional - March 4 - March 10

Rick Rowland (65.23) Pieter Vanbennekorn (12.21) Christine Matus (12.21)

Colin Mackay (10.33) Spencer Kiernan (10.33)

Unit 141 Sectional - February 8 - February 10

Chris Marlow (9.31) Richard Popper (6.37) Rick Rowland (5.25)

Debby and Andy Purbrick (5.14) Pieter Vanbennekorn (4.82) Christine Matus (4.82)

Blue Hen Sectional - February 22 - February 24

Rick Rowland (21.80) Greg Burch (12.95) Richard Popper (11.39) Pieter Vanbennekorn (6.54)

Christine Matus (6.54) Chris Marlow (6.49) Paul Amer (6.37) Spencer Kiernan (5.90)

Colin Mackay (5.90) Randy Berseth (4.47) Pete & Marie Filandro (4.11)

Unit 190 NLM Sectional - March 25 - March 29

Nancy Haile (5.19) Charles Seaver (4.99) Teresa Young (4.16)

Unit 141 Sectional - April 12 - April 14

Richard Popper (11.21) Rick Rowland (9.02)

Unit 133 Sectional - April 26 - April 28

Pete & Marie Filandro (11.28)



Playing the Percentages, part 1 - by Pete Filandro

Knowing the percentages in bridge will make you a better player. Percentages come into play very often in declarer play, less often but still frequently in the bidding, and even a little bit on defense. But you don't need to memorize tedious charts and learn percentages to the third decimal place. The knowledge of a few common percentages is enough to help most beginners and intermediates. As you gain experience, the basic knowledge will assist you by giving you "feelings" about the right bid or play. That is, you may not know the precise calculations of a specific bid - or play - but you will have a "feeling" that one is superior to another.

Let's start with a simple example involving finesses. A typical finesse has a 50% chance of success. Let's look at a hand:

♠ J9854
♥ 9873
♦ AQ
♣ K10

♠ KQ763
♥ AKQJ
♦ 52
♣ 52

You dealt and opened 1S, partner bid an invitational 3S, and you bid 4S. The opening lead was a trump to RHO's Ace. RHO exits with the remaining trump or a heart (neither matters). You have lost one trick so far. How do you feel about the contract? Well, each minor suit finesse is a 50% chance. You only need 1 of the 2 to work. Your chance of making the contract is 50% if your first attempt at a finesse wins - PLUS, if it loses, you still have a 50% chance that the second finesse will win. That is 50% of the remaining 50% (i.e., 25%). Thus, your chance of making this contract is a total of 75%. Players often use a verbal description of this situation as "When you need 1 of 2 finesses your chance of success is 75%."

You draw the remaining trump, if it is still outstanding, and then play hearts until all of the opponents hearts are exhausted. That will make it more difficult for them to exit safely. Does it matter which finesse you take first? In this case, yes. You can improve your odds slightly by taking the club finesse first. If, on an unlucky day, RHO has both missing key cards (the King of diamonds and the Ace of clubs), on an extra lucky day he will also have the Queen and Jack of clubs. In that case, when he wins the Ace of clubs all he can do is cash the Queen of clubs and then must give you a free finesse into your diamonds, or a ruff-and-slough.

What are the odds of that kind of extra luck? Actually, not too hard to estimate. The Queen of clubs will be in RHO's hand 50% of the time. The Jack of clubs will be in RHO's hand 50% of the time. So both of them will be in RHO's hand 25% of the time. So now our chance of success is the original 75%, plus 25% of the remaining 25%. That's an additional 6 ¼ %. Wow, now this hand is an 82.25% favorite. Aren't you glad you bid game?

2013 ACHIEVEMENT AWARD LEADERS

Bronze - 0 - 49

Teresa Young, Nancy Haile, Jill Itzkovitz

Silver - 50 - 199

Angela Jones, John Strange, Kim Holm

Gold - 200 - 499

Spencer Kiernan, Pieter Vanbennekom, Sharon Weintrob

Diamond - 500 - 999

Christine Matus, Colin MacKay, Sharon Gordon & Patricia Loeffelhotz

Emerald - 1000 - 2499

Chris Marlow, Paul Amer, Sigridur Kristjansdottir

Platinum - 2500 - unlimited

Rick Rowland, Gregg Burch, Richard Popper

WHERE DOES MY CHARITY MONEY GO?

The ACBL Charity Foundation makes grants available to its 25 districts on a five year cycle. This year District 4 gave individual units the opportunity to apply for a portion of its grant. The DSBA successfully applied for a \$5,000 grant to be presented to the Ronald McDonald House of Delaware's Adopt a Room program.

The Ronald McDonald House provides 50 guest rooms for the families of patients being treated at Wilmington area facilities, primarily the Nemours/Alfred I. DuPont Hospital for Children in Wilmington. Approximately 30% of the families served come from Kent and Sussex Counties. Families are asked for a \$15 donation to defray operating costs, but nobody is turned away for nonpayment. The Adopt a Room program helps defray the operating costs for those that are unable to pay.

Rick Rowland

Delaware Summer Teams

Upstate & Downstate

Register by May 15th

This event is a team event played in the homes of the participants,
and will run from June 1st until September 30.

Cost is \$40 per team for the entire tournament!

Teams may consist of 4, 5, or 6 players and participants need not be DSBA members.

Masterpoints won count toward the Achievement Award Competition.

Questions or to register contact Barbara Rhodes - 302-375-6414 or bmossr@gmail.com

Information is available - www.unit190.org

Thanks, Caroline!!

Tom Weik, District 4 President, mentioned in his article in the last issue of the District 4 newsletter that Caroline Hughes from our own Unit 190 has agreed to give a brief presentation to the District 4 Board at their meeting during the Valley Forge Regional Tournament. The Board wants to learn what keeps newer players interested in duplicate bridge, and Caroline has been talking to newcomers and intermediate players and will be sharing their opinions and concerns at the meeting.

Caroline told me that, in talking to newer players, she consistently hears about the importance of lessons. Many newer duplicate players learned to play bridge in college and lessons help them refresh and refocus their game. The lessons also provide a social structure to meet people who are also interested in playing bridge.

If you have information you would like Caroline to share at the meeting, please contact her at carolinechughes@gmail.com.

Marie Filandro

Bridge at the Beach by Dini Romito

Nancy Steele and Perry Drevo won 2nd Overall in the ACBL-wide Seniors Pairs and 1st Overall in District 4. 3rd Overall in District 4 was Charlotte Wheatley and Terry Dutton. Congratulations!!

My thanks to everyone who helped run the games smoothly over the winter: The Players, Eli Solomon, Mary Alice Mumford, George Jones, John Andrews and Chuck Nelson.

Below the Canal by Audrey Pugh

Monday and Friday bridge clubs at Dover are still held at the Modern Maturity Center. Monday Club starts at 10:00 a.m. and the Friday Club starts at 11:00 a.m.

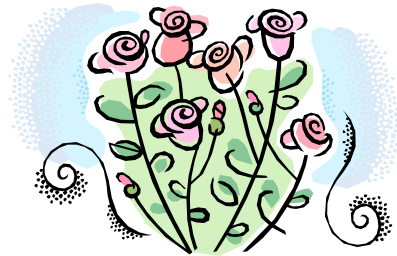
Both clubs have been joined this year by new members:

Barbara Angermeir

Thurman & Cathy Bruffey

Robert Hatton

James & Judy McKinney



March 4th - ACBL- wide Senior Game

1 st - R. Clare O'Brien & Audrey Pugh	66.50%
2 nd / 3 rd - Bonnie Savage & Gerrie Willis	59.38%
Thurman & Cathy Bruffey	59.38%

Beth Mallon - Gold Life master

Congratulations to Beth Mallon, who recently went over the 2500 point mark! I started playing bridge with Beth around two years ago. We very quickly settled into a comfortable partnership. She is a terrific bridge player in every aspect of the game.

She has a pleasant disposition at the table is kind to both her partner and her opponents! I enjoy playing with her and want to say she deserves kudos for achieving this wonderful milestone in the world of duplicate bridge. We all wish her continued success!

Sincerely, Lillian Schaub

♣♦♥♠ **2013 First State Southern Sectional** ♣♦♥♠

July 18, 19, 20
Lewes Presbyterian Church
133 Kings Highway
Lewes, Delaware

Thursday, July 18

10 a.m. - Stratified Open Pairs (2000+/750-2000/0-750)
Stratified 199er Pairs (100-200/50-100/0-50)

3 p.m. - Stratified Open Pairs (2000+/750-2000/0-750)
Stratified 199er Pairs (100-200/50-100/0-50)

Friday, July 19

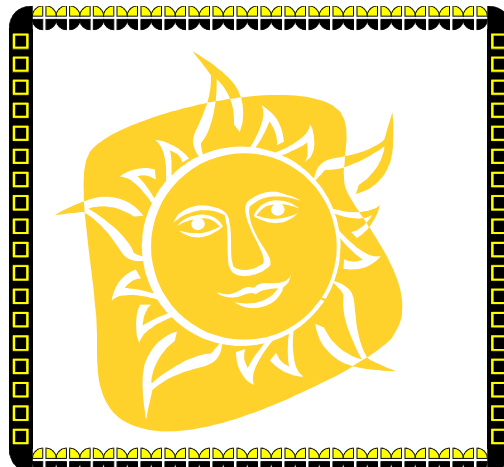
10 a.m. - Stratified Open Pairs (2000+/750-2000/0-750)
Stratified 199er Pairs (100-200/50-100/0-50)

3 p.m. - Stratified Open Pairs (2000+/750-2000/0-750)
Stratified 199er Pairs (100-200/50-100/0-50)

Saturday, July 20

10 a.m. and TBD - A/X Swiss Teams (3000+/0-3000)
B/C/D Swiss Teams - (750-1500/300-750/0-300)

Two-session event with a light lunch provided between sessions



♣♦♥♠ 2013 Wilmington Sectional ♣♦♥♠
May 31 - June 2, 2013
Bridge Studio of Delaware

Friday, May 31

9 a.m. - Stratified Open Pairs (Open/2500/1250)
Stratified NLM Pairs*

1:30 p.m. - Flight A/X Pairs (Open/5000)
Stratified B/C/D Pairs (3000/2000/1000)
Stratified NLM Pairs*

7 p.m. - Stratified Open Pairs (Open/2500/1250)
Stratified NLM Pairs*

Saturday, June 1

10 a.m. - Stratified Open Pairs (Open/2500/1250)
Stratified NLM Pairs*

2 p.m. - Flight A/X Pairs (Open/5000)
Stratified B/C/D Pairs (3000/2000/1000)
Stratified NLM Pairs*

7 p.m. - Stratified Open Pairs (Open/2500/1250)
Stratified NLM Pairs*

* Note: All NLM Pairs stratified based on attendance.

Sunday, June 2

11 a.m. - two-session play thru - pizza will be sold between sessions
Flight A/X - Two-session Swiss (Open/4000)
Stratified B/C/D - Two-session Swiss (2500/1250/500)