
New Normal News June 2022

1 message

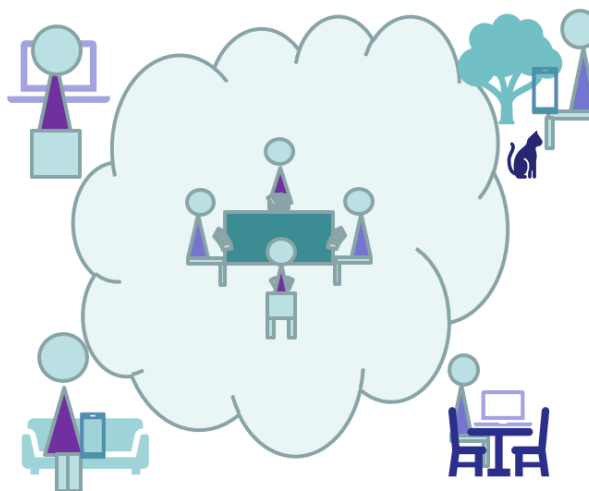
Nicky <bridgeforpleasure@gmail.com>
Reply-To: bridgeforpleasure@gmail.com
To: Nicky <nickyrbainbridge@gmail.com>

15 June 2022 at 16:42

[View this email in your browser](#)

New Normal News

JUNE 2022



www.bridgeforpleasure.co.uk

In this edition...

Northampton Bridge Club Opening Event

Filling the Tables

New Normal New Movements

EBU Top 50 Busiest Club List

Covid - where are we now?

Sharing the income

How are clubs doing?

Zoom Conferences (With Link for Next Meeting)

Thanks to everyone who contributes to the conferences and gives feedback about the newsletter, or lets me know they watch the

conference recordings. As long as I know this is useful, I will keep going!

The audience for this newsletter is fast growing. If you would like to receive it, you can subscribe at:

[Click here to subscribe to this newsletter](#)

[Click here to view previous newsletters](#)

Northampton Bridge Club Opening Event

Northampton Bridge Club played in the ground floor of a terrace house for many years. The club thrived despite limited space and limited on street parking. In March 2020 they obtained, equipped and decorated new premises. We all know what happened next....

On Wednesday June 8th, Northampton held a formal opening event to celebrate the new venue. Along with about seventy others, a representative of the mayor of Northampton, the Chairman of Northants CBA, the Chair of the EBU and Bernard Magee all attended.



After a lovely buffet and cake, fifteen and a half tables settled down to play bridge. It was particularly good to see Ian Payne making the journey from London, definitely the EBU showing some love for clubs.

Filling the Tables

An amazing army of bridge club organisers in nearly 500 clubs is offering nearly nine hundred face to face sessions every week. However, table numbers are very low in many of these clubs. We need to fill more tables to keep club bridge going. There are three possible target market segments.

- 1 People who haven't played yet.
- 2 Nervous former club players unsure that bridge clubs are safe.
- 3 Online social players.

Let's start to take steps.

New Players

One simple step is to make sure that anyone who looks online can quickly find a place to learn the game.

Possible goal: Every club website to:

- advertise its own teaching; OR
- teaching by a local teacher; OR
- a link to information about other ways to learn bridge.

Reassuring Nervous Players

Most clubs are now using a few simple precautions to keep their players safe:

- Asking unwell or unvaccinated players to stay away
- More space around tables
- Filters and Other Ventilation
- Providing sanitiser

Let prospective returners know the club cares and takes reasonable steps in the Covid endemic.

New Normal New Movements

Many face to face sessions in clubs are attended by lower numbers of tables and are playing fewer boards than before the pandemic. Many players are less mobile. Players have less experience of complex movements.

Two movements that cater for six tables playing 20/21 boards are:

6 Table 7 Round Hesitation Mitchell

- All players play all 21 boards
- Five stationary pairs

East/West play twice at table 6
Arrow switch on final round
If half table, sit out is 3 boards

6 Table 5 Round Web Mitchell.

All players play all 20 boards
Six stationary pairs
Simple East/West movement
Simple board movement (two sets required)
Half table sit out is 4 boards

Please email us for full instructions and ScoreBridge movement.dat file.

EBU Top 50 Busiest Club List

Every year the EBU used to publish a list of the top fifty clubs, by quantity of P2P sessions. They have decided not to publish such a list for 2020-21. They say it's too different from previous lists. They want to wait until the future looks more like the past. Could be a long wait.

Sharing the Income

Here are two proposals to share income more fairly and promote grass roots bridge.

Halve Club Face to Face P2P/UM

The Pay to Play levy on clubs for face to face sessions should be halved. This will help make the returning face to face sessions financially viable.

Charge for EBUScore Support

The EBU should make an annual charge for support of EBU Score in clubs. It was recently made clear that EBU staff spend some time supporting this product.

It's presently supplied free of charge to affiliated clubs.

Despite this, many affiliated clubs still choose to use ScoreBridge, and pay an annual service fee. These clubs, often smaller and more socially minded, are subsidising the use of EBU Score by others. The EBU could charge around half the typical annual support fee of ScoreBridge for EBUScore restore fairness and gain a little income.

How are clubs doing?

Fifteen clubs returned to face to face since last month, adding 18 sessions to the weekly offer.

Still in catch up, but nearly there. I have been adding a few new clubs into the sample - selected by "completing" the data for a particular county.

These statistics are up to June 5th.

The level of updates to club web sites has picked up again. Can't see any particular reason. Have started to note references to lessons or teachers or practice etc.

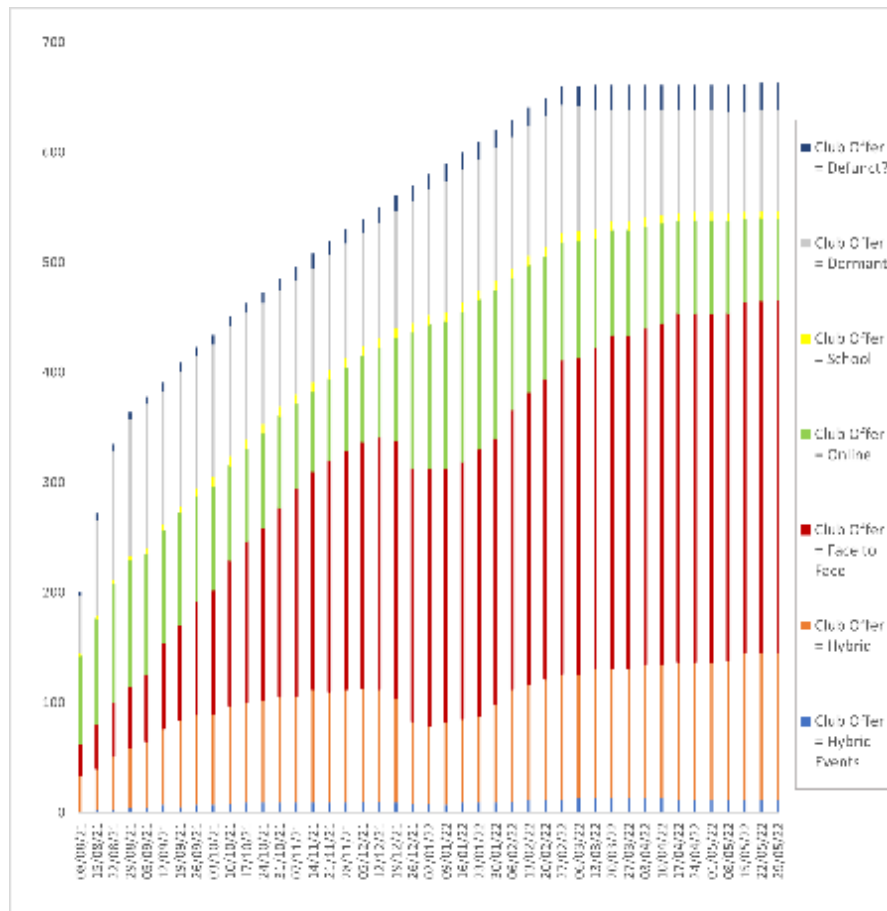
Rather concerned that out of roughly 80 classified so far 34 have no reference to learning or teaching bridge.

Clubs and Face to Face

Face to Face Sessions On Offer	892 (867)
Clubs Offering Face to Face	472 (455)

Club Statistics Update 3rd June (8th May 2022)

This chart represents the trends in a weekly snapshot of the offer from the clubs in the current sample, now 665, being monitored weekly.



Hybrid Events means the club is offering Face to Face AND Online and some in the form of Hybrid Events.

Hybrid Club means the club is offering some Face to Face and some Online Sessions.

Face to Face means the club is only offering Face to Face Sessions.

Online means the club is only offering Online Sessions.

School means the offer is principally lessons and practice.

Dormant means the club web site is there, but the club is not offering sessions dedicated to its members.

Defunct? means the club web site appears to have been closed down.

There's much more information at the page below, typically updated once a week.

New Normal Zoom Conferences

The meetings are informal gatherings. They are intended to bring together a wide range of perspectives. They should allow constructive debate.

The proceedings are not secret and will be recorded and published widely.

Previous Zoom conferences:

2020	16th September 18th November	21st October 16th December
2021	20th January 17th March 19th May	17th February 21st April 16th June
	21st July 18th August 22nd September	https://youtu.be/PbTyAz9vuHA https://youtu.be/pPEzFxs8VBA https://youtu.be/QJlu3Pln02s
	20th October 17th November	https://youtu.be/VRP7eaeqaH8 https://youtu.be/DAv-7POhNHU
2022	19th January 16th February 16th March 20th April 18th May	https://youtu.be/3w9hl3UWG70 https://youtu.be/Z5jOfwcpueU https://youtu.be/nlW1BIMG6-0 https://youtu.be/ekPnjt-KIZs https://youtu.be/hond7ZCvKzM

A link for the next Zoom conference is below:

Nicky Bainbridge is inviting you to a scheduled Zoom meeting.

Topic: June 2022 New Normal Bridge Organiser Discussion
Time: Jun 22, 2022 09:00 AM London

Join Zoom Meeting

https://us02web.zoom.us/j/89902264814?pwd=_ZjRrMG5jQVBqN3NncUpJenJSV3dkQT09

Meeting ID: 899 0226 4814
Passcode: 400636

New Normal Newsletter

This is issued once a month generally on the weekend before the third Wednesday. It is written and distributed on an entirely non profit basis, takes no advertising or commission.

Previous New Normal newsletters and a subscription form are available on the Bridge for Pleasure web site.

There is also information on playing Covid-secure bridge.

A freely available bridge teaching scheme with lesson plans, notes, deals, homework quizzes and answers is there for all.

Bridge for Pleasure - Information Web Site

Please forward the letter to anyone in the bridge world who might be interested. Anyone can subscribe using the link below,

Subscribe/Unsubscribe

If you don't want to receive this newsletter, click "Unsubscribe" below.
I am always keen on feedback, good or bad, so do tell me...

Copyright © 2022 Rugby Village Bridge, All rights reserved.
You are receiving this email because you opted in via our website.

Our mailing address is:

Rugby Village Bridge
Dunchurch Sportsfield and Village Hall
Rugby Road
Dunchurch, Rugby CV22 6PN
United Kingdom

[Add us to your address book](#)

Want to change how you receive these emails?
You can [update your preferences](#) or [unsubscribe from this list](#).

